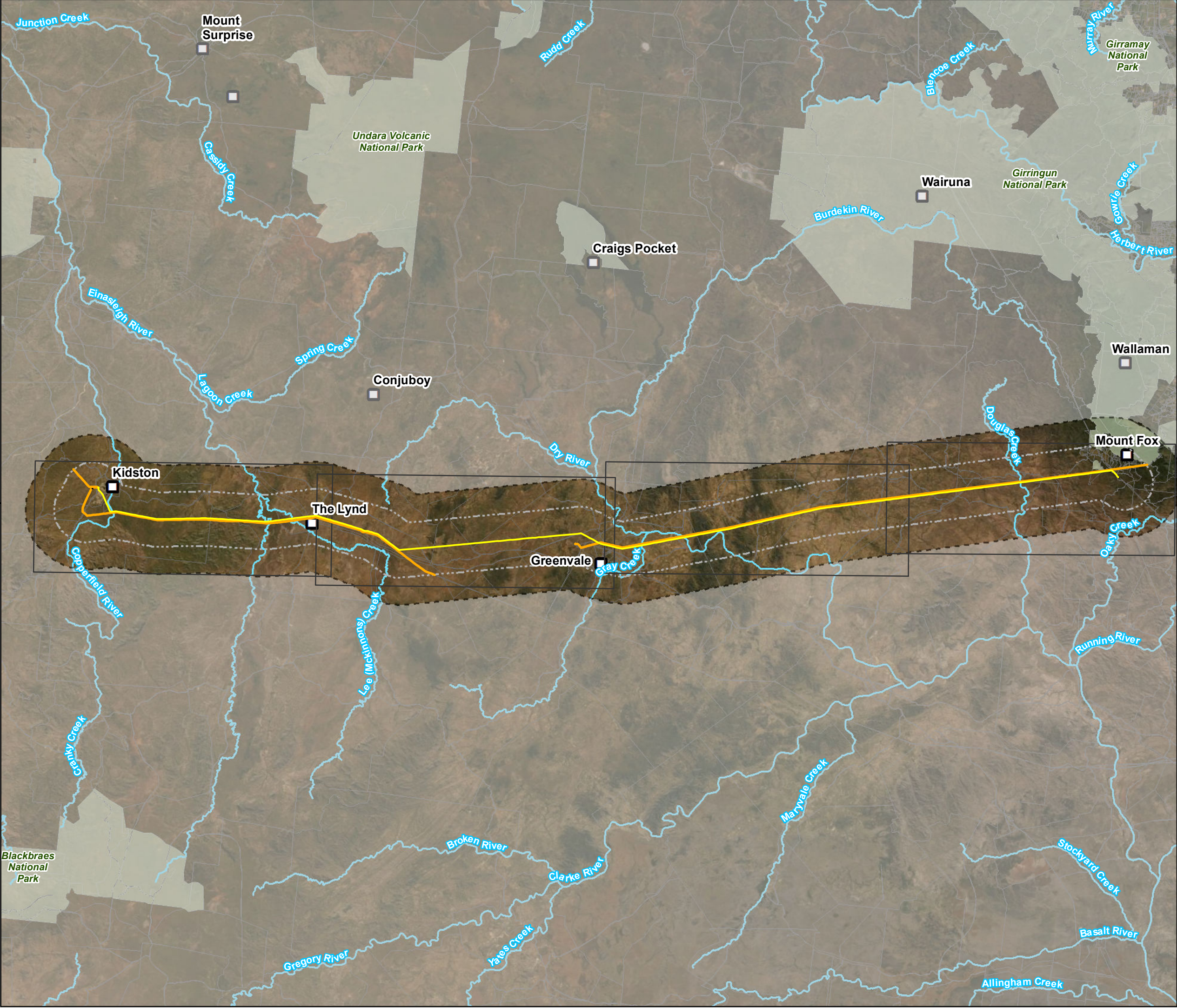


Appendix A

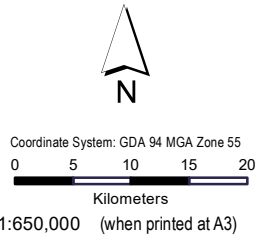
Project Plans

Oct-2021

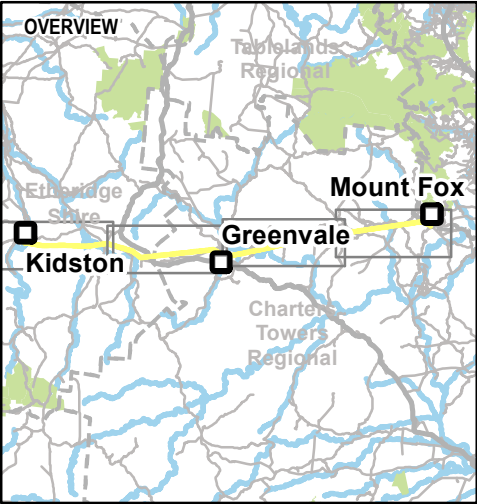
Genex Kidston Connection Project - Ministerial Infrastructure Designation Assessment Report



AECOM does not warrant the accuracy or completeness of information displayed in this map and any person using it does so at their own risk. AECOM shall bear no responsibility or liability for any errors, faults, defects, or omissions in the information.



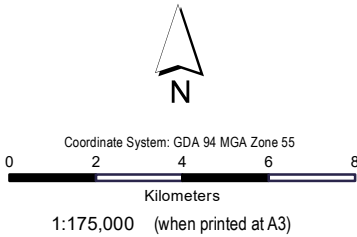
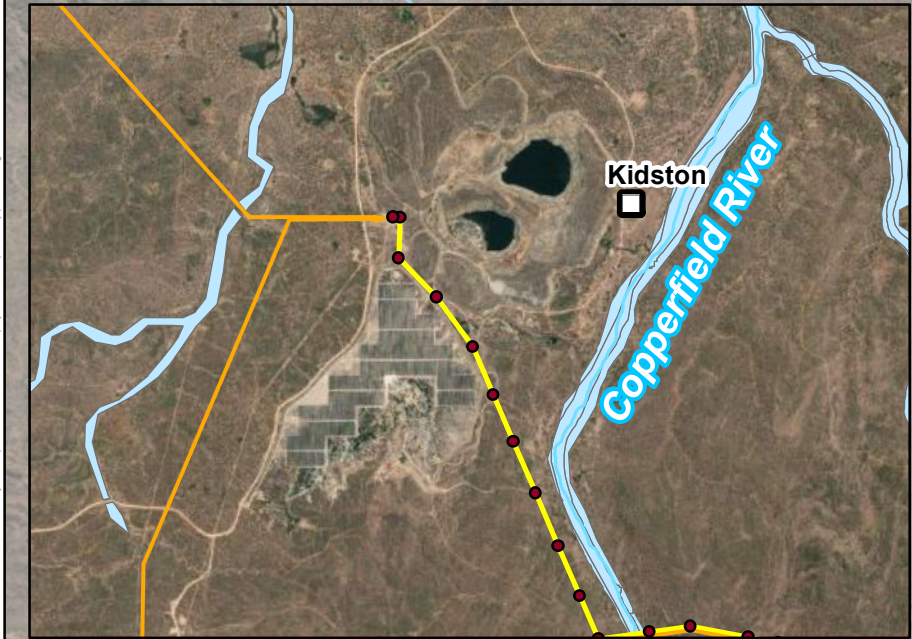
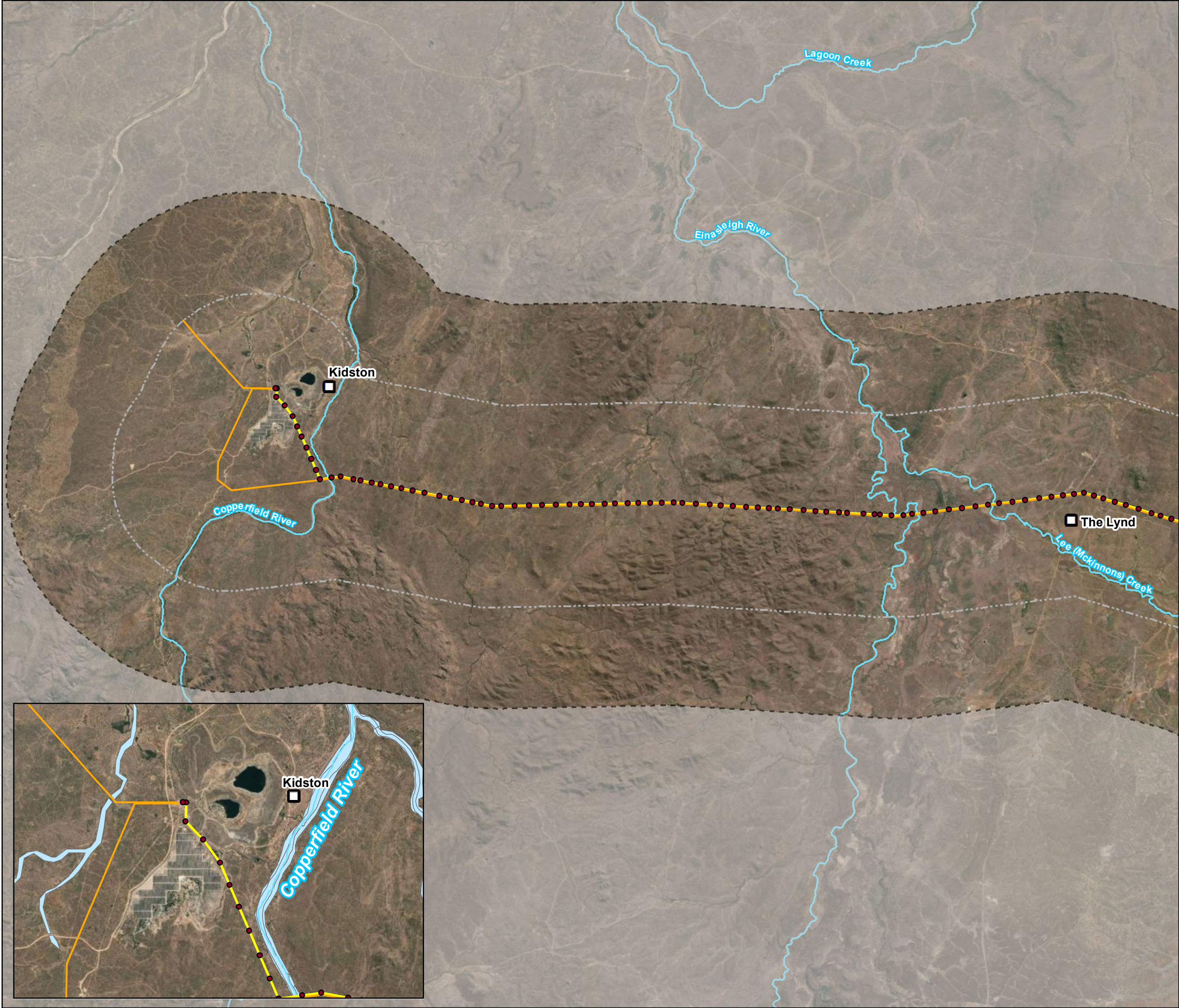
- Legend**
- Places
 - Watercourses
 - Ergon Lines
 - Protected Areas
 - Project 10 km Buffer
 - Project 5 km Buffer
 - Preferred Alignment



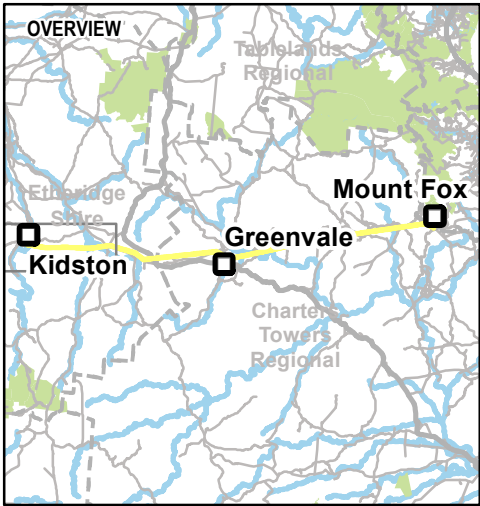
Data sources:
DCDB, Roads, Watercourses - DNRM 2017
Site Features and Layout - AECOM 2018
© SISP Imagery 2017

Disclaimer:
While every care is taken to ensure the accuracy of the Information Product, the State of Queensland makes no representations or warranties about its accuracy, reliability, completeness or suitability for any particular purpose and disclaims all responsibility and all liability (including without limitation, liability in negligence) for all expenses, losses, damages (including indirect or consequential damage) and costs which you might incur as a result of the product being inaccurate or

Kidston Connection Project	
PROJECT LOCATION	
PROJECT ID:	60577456
CREATED BY:	JB
LAST MODIFIED:	AJS - 28/09/2021
VERSION:	3



- Legend**
- Indicative Structure Locations
 - Places
 - Watercourses
 - Ergon Lines
 - Protected Areas
 - Project 10 km Buffer
 - Project 5 km Buffer
 - Preferred Alignment



Data sources:
DCDB, Roads, Watercourses - DNRM 2017
Site Features and Layout - AECOM 2018
© SISIP Imagery 2017

Disclaimer:
While every care is taken to ensure the accuracy of the Information Product, the State of Queensland makes no representations or warranties about its accuracy, reliability, completeness or suitability for any particular purpose and disclaims all responsibility and all liability (including without limitation, liability in negligence) for all expenses, losses, damages (including indirect or consequential damage) and costs which you might incur as a result of the product being inaccurate or

Kidston Connection Project

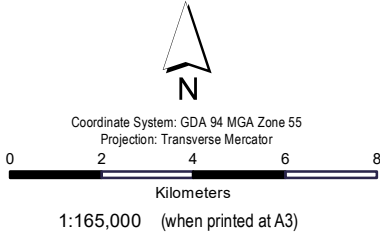
PROJECT LOCATION

PROJECT ID:	60577456
CREATED BY:	JB
LAST MODIFIED:	AJS - 28/09/2021
VERSION:	3

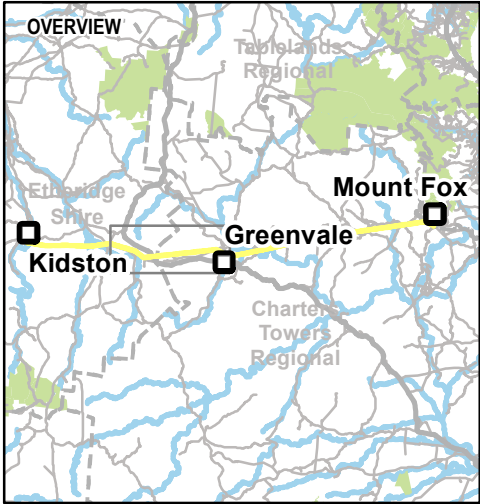


AECOM does not warrant the accuracy or completeness of information displayed in this map and any person using it does so at their own risk. AECOM shall bear no responsibility or liability for any errors, faults, defects, or omissions in the information.

Filename: Document Path: P:\605X\605774564_Tech Work Area\4.99 GIS\02_MXD\..._NEW VERSIONS\60577456_F3-1B_KidstonConnectionProject_ProjectLocation_A3L_v3.mxd



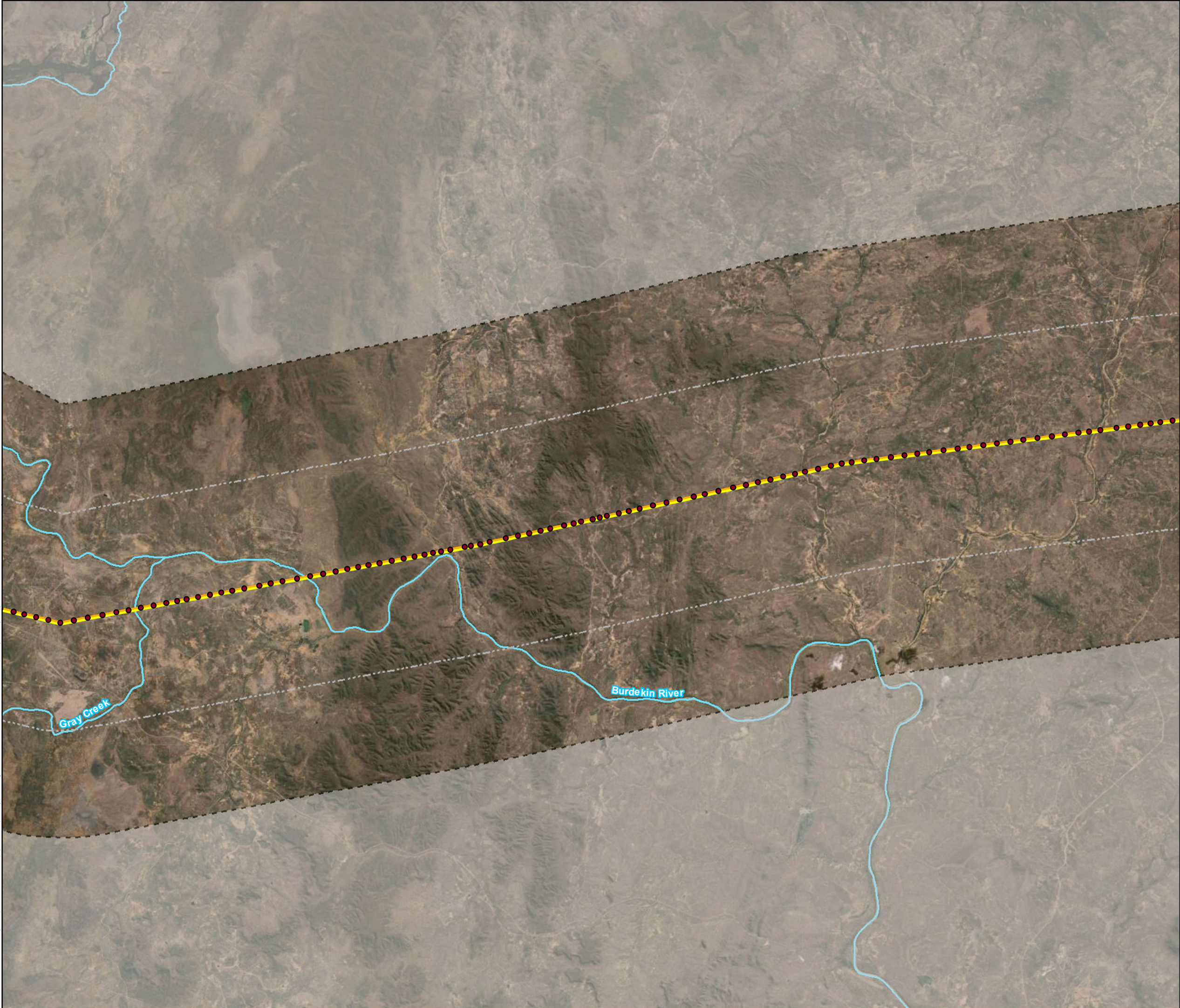
- Legend**
- Indicative Structure Locations
 - Places
 - Watercourses
 - Ergon Lines
 - Project 10 km Buffer
 - Project 5 km Buffer
 - Preferred Alignment



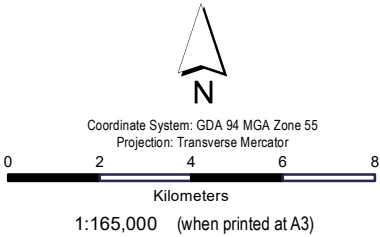
Data sources:
DCDB, Roads, Watercourses - DNRM 2017
Site Features and Layout - AECOM 2018
© SISP Imagery 2017

Disclaimer:
While every care is taken to ensure the accuracy of the Information Product, the State of Queensland makes no representations or warranties about its accuracy, reliability, completeness or suitability for any particular purpose and disclaims all responsibility and all liability (including without limitation, liability in negligence) for all expenses, losses, damages (including indirect or consequential damage) and costs which you might incur as a result of the product being inaccurate or

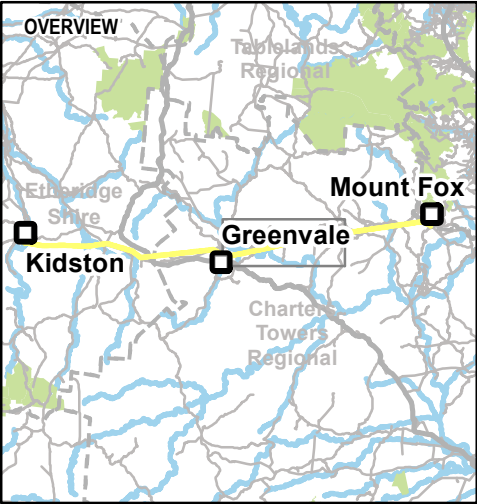
Kidston Connection Project	
PROJECT LOCATION	
PROJECT ID:	60577456
CREATED BY:	JB
LAST MODIFIED:	AJS - 28/09/2021
VERSION:	3



AECOM does not warrant the accuracy or completeness of information displayed in this map and any person using it does so at their own risk. AECOM shall bear no responsibility or liability for any errors, faults, defects, or omissions in the information.



- Legend**
- Indicative Structure Locations
 - Watercourses
 - Ergon Lines
 - Project 10 km Buffer
 - Project 5 km Buffer
 - Preferred Alignment



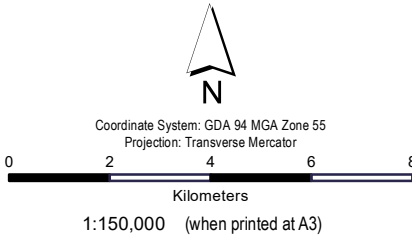
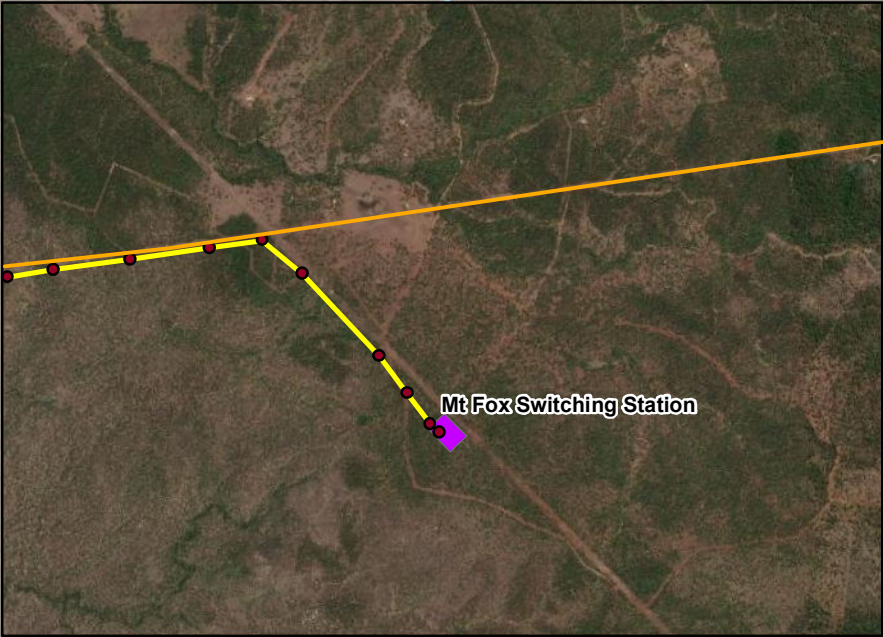
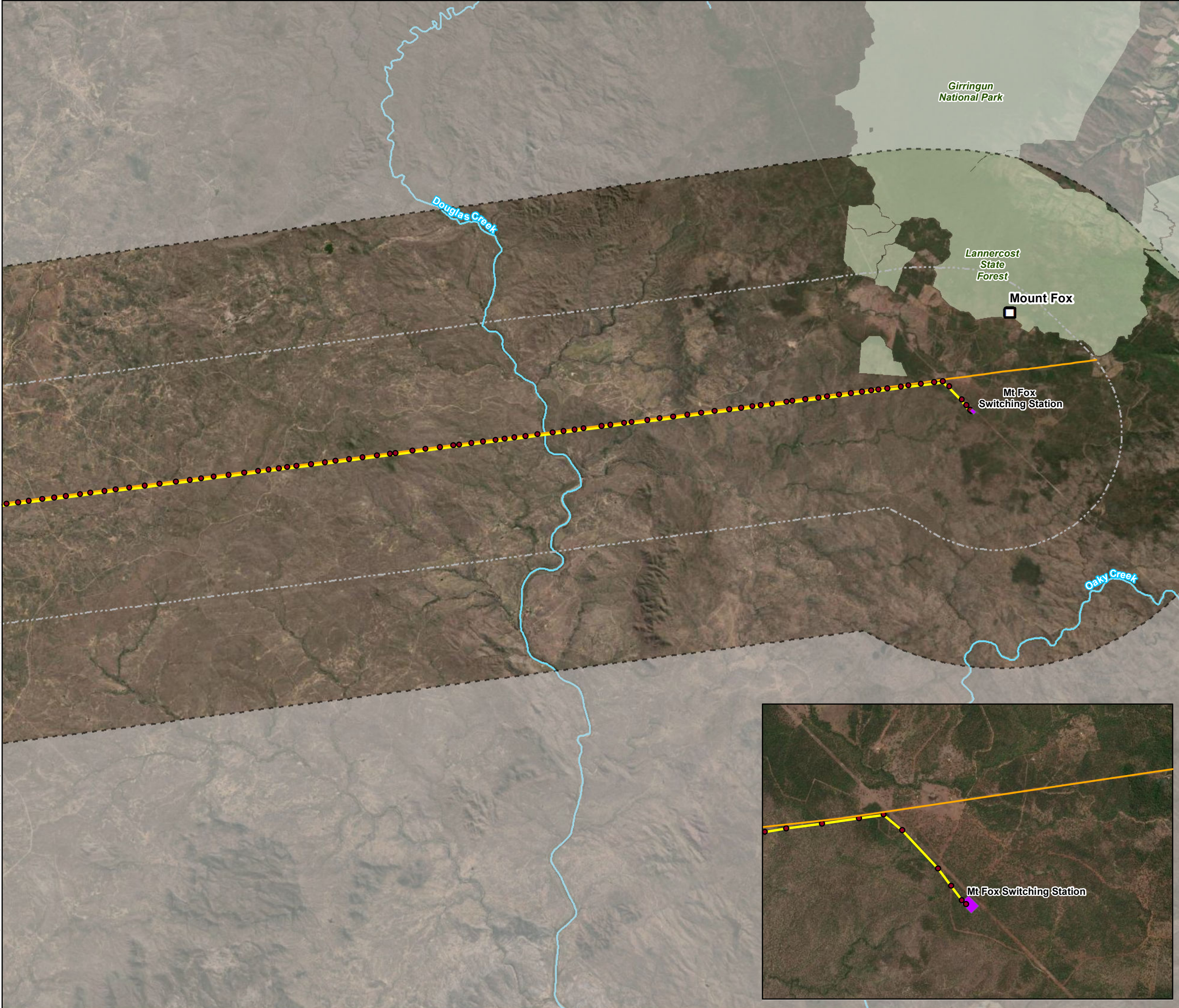
Data sources:
DCDB, Roads, Watercourses - DNRM 2017
Site Features and Layout - AECOM 2018
© SISP Imagery 2017

Disclaimer:
While every care is taken to ensure the accuracy of the Information Product, the State of Queensland makes no representations or warranties about its accuracy, reliability, completeness or suitability for any particular purpose and disclaims all responsibility and all liability (including without limitation, liability in negligence) for all expenses, losses, damages (including indirect or consequential damage) and costs which you might incur as a result of the product being inaccurate or

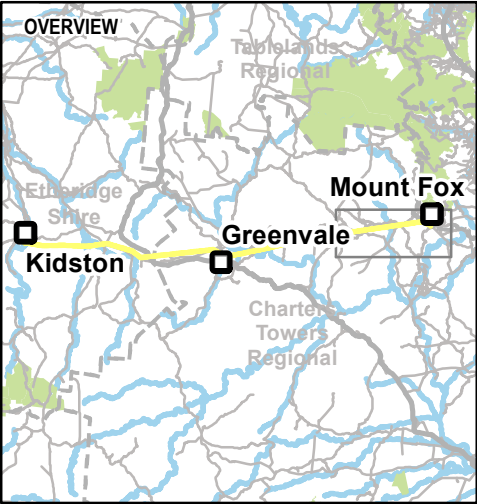
Kidston Connection Project

PROJECT LOCATION

PROJECT ID:	60577456	
CREATED BY:	JB	
LAST MODIFIED:	AJS - 28/09/2021	
VERSION:	3	



- Legend**
- Indicative Structure Locations
 - Places
 - Watercourses
 - Ergon Lines
 - Project 10 km Buffer
 - Project 5 km Buffer
 - Protected Areas
 - Switching Station
 - Preferred Alignment



Data sources:
DCDB, Roads, Watercourses - DNRM 2017
Site Features and Layout - AECOM 2018
© SISP Imagery 2017

Disclaimer:
While every care is taken to ensure the accuracy of the Information Product, the State of Queensland makes no representations or warranties about its accuracy, reliability, completeness or suitability for any particular purpose and disclaims all responsibility and all liability (including without limitation, liability in negligence) for all expenses, losses, damages (including indirect or consequential damage) and costs which you might incur as a result of the product being inaccurate or

Kidston Connection Project

PROJECT LOCATION

PROJECT ID:	60577456	
CREATED BY:	JB	
LAST MODIFIED:	AJS - 28/09/2021	
VERSION:	3	