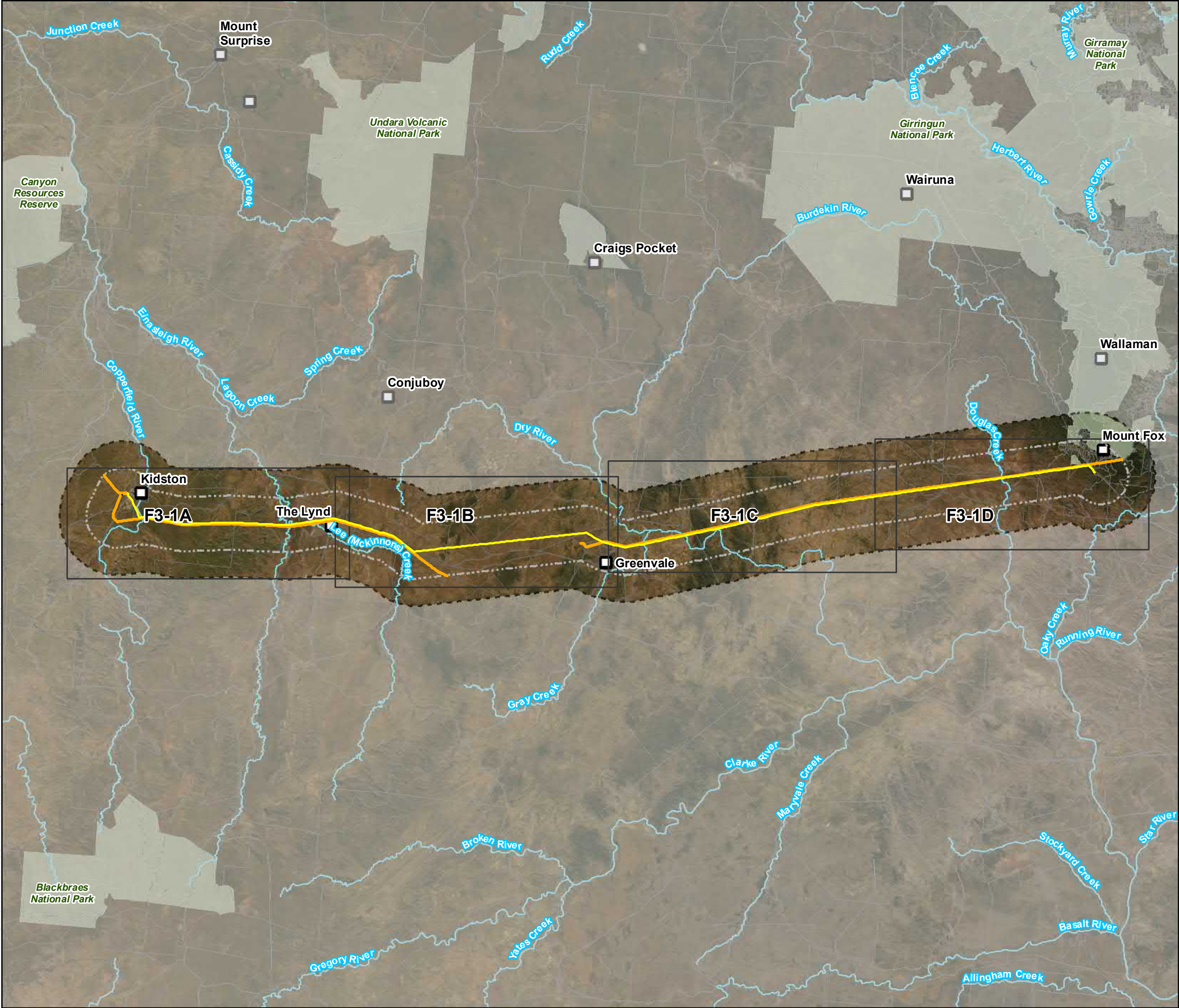


Appendix D

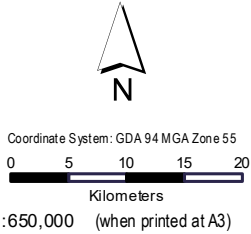
Project Location and Tenure

June-2022

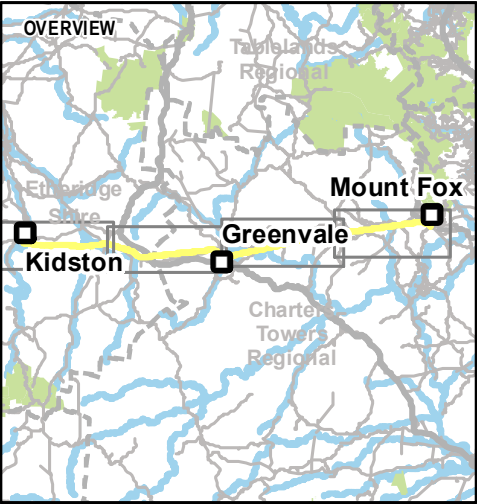
Genex Kidston Connection Project - Preliminary Documentation (2021/9060)



AECOM does not warrant the accuracy or completeness of information displayed in this map and any person using it does so at their own risk. AECOM shall bear no responsibility or liability for any errors, faults, defects, omissions or in the information.



- Legend**
- Places
 - Project Alignment
 - Watercourses
 - Ergon Lines
 - Protected Areas
 - Project 10 km Buffer
 - Project 5 km Buffer



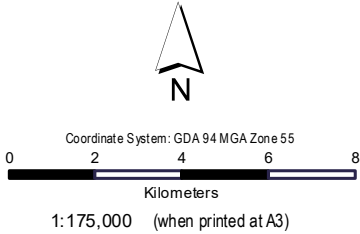
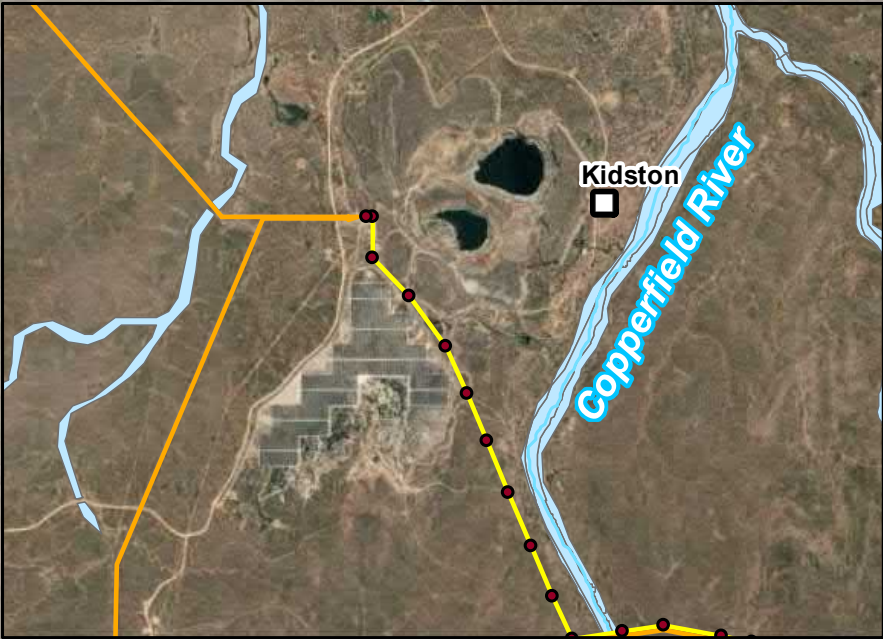
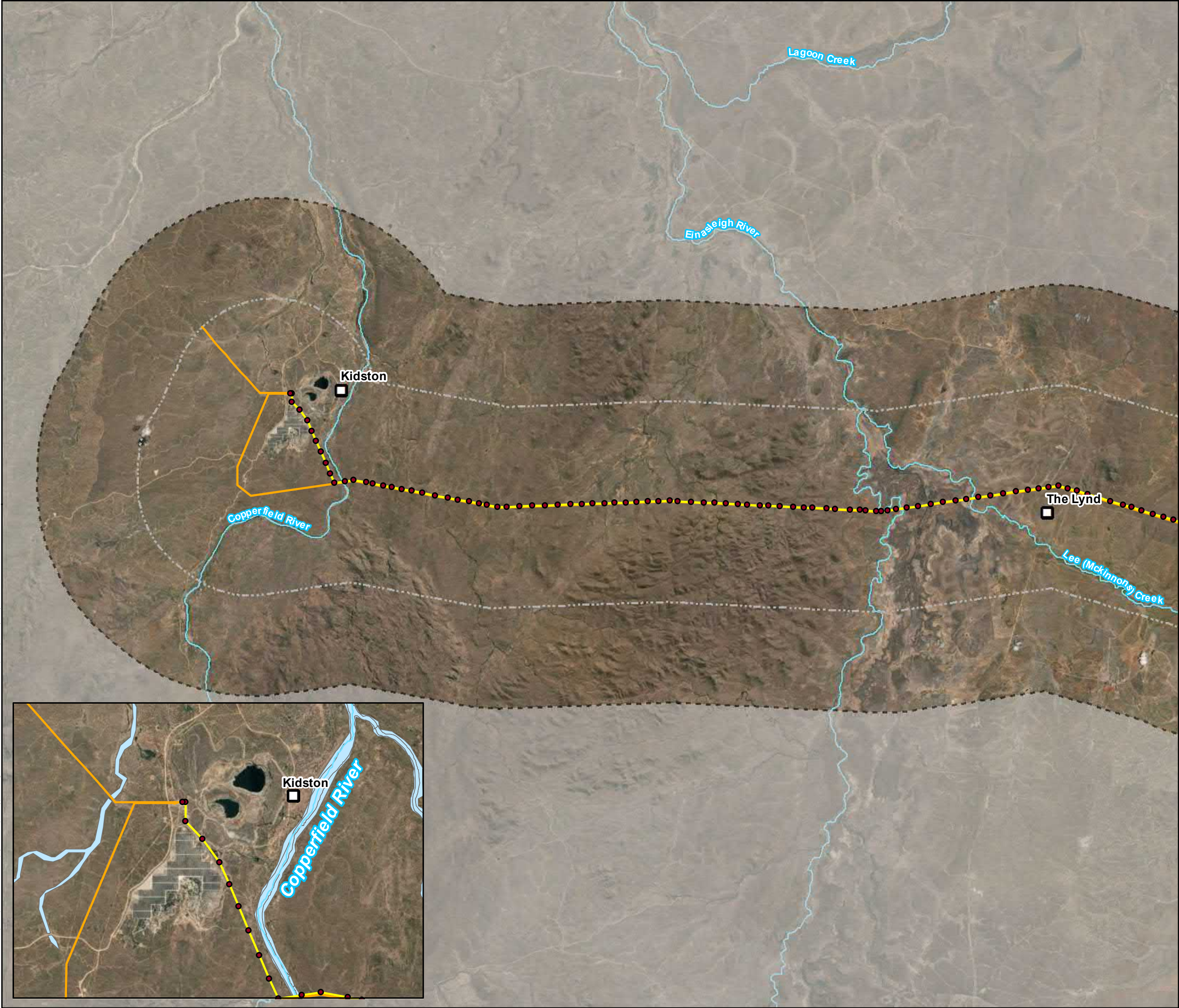
Data sources:
DCDB, Roads, Watercourses - DNRM 2017
Site Features and Layout - AECOM 2018
© SISIP Imagery 2017

Disclaimer:
While every care is taken to ensure the accuracy of the Information Product, the State of Queensland makes no representations or warranties about its accuracy, reliability, completeness or suitability for any particular purpose and disclaims all responsibility and all liability (including without limitation, liability in negligence) for all expenses, losses, damages (including indirect or consequential damage) and costs which you might incur as a result of the product being inaccurate or

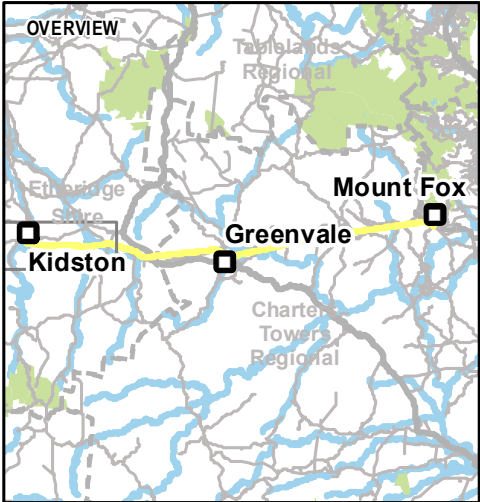
Kidston Connection Project

PROJECT LOCATION

PROJECT ID:	60577456	Figure F1-1
CREATED BY:	JB	
LAST MODIFIED:	AJS - 28/09/2021	
VERSION:	3	



- Legend**
- Indicative Structure Locations
 - Places
 - Project Alignment
 - Watercourses
 - Ergon Lines
 - Protected Areas
 - Project 10 km Buffer
 - Project 5 km Buffer



Data sources:
DCDB, Roads, Watercourses - DNRM 2017
Site Features and Layout - AECOM 2018
© SISIP Imagery 2017

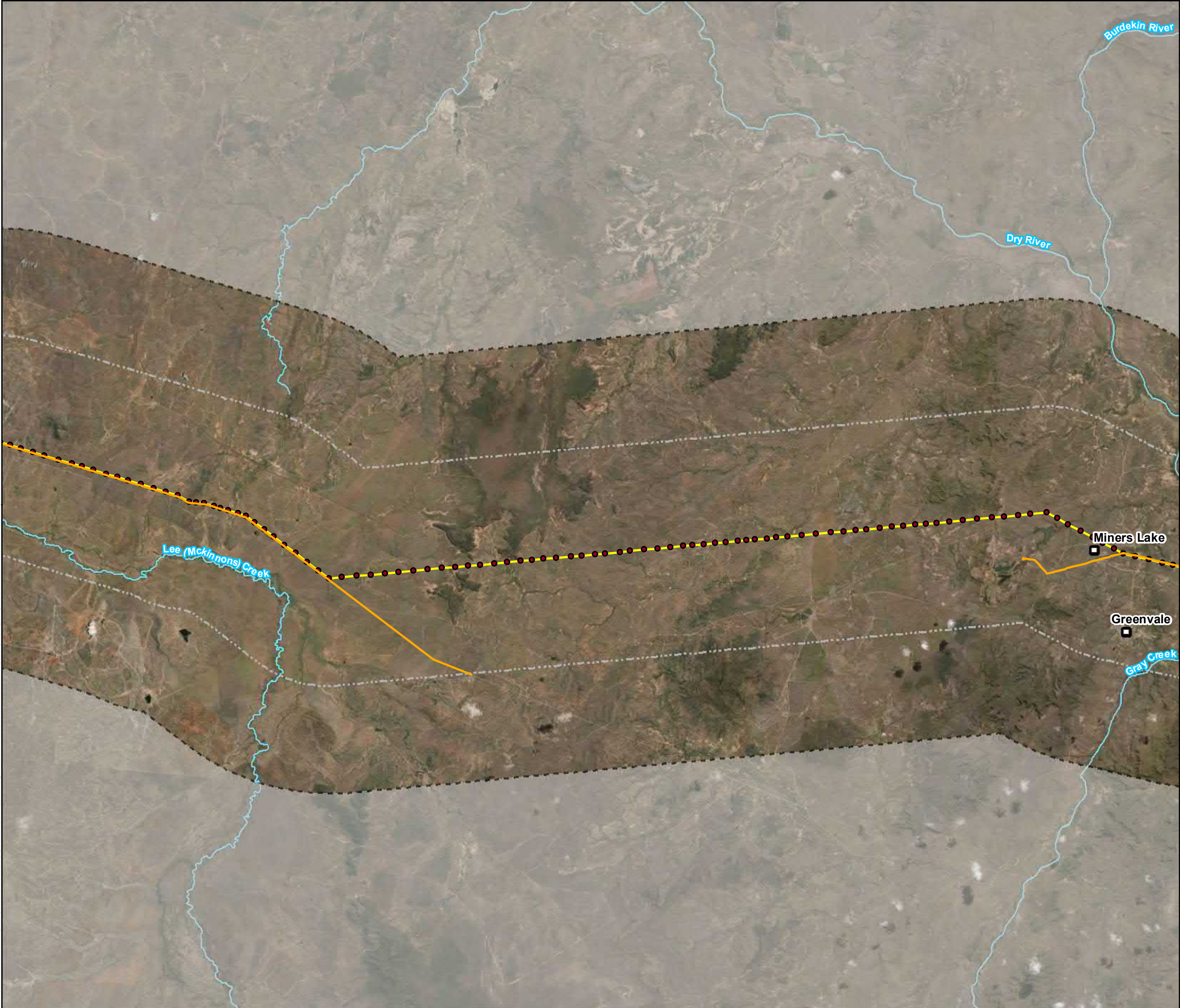
Disclaimer:
While every care is taken to ensure the accuracy of the Information Product, the State of Queensland makes no representations or warranties about its accuracy, reliability, completeness or suitability for any particular purpose and disclaims all responsibility and all liability (including without limitation, liability in negligence) for all expenses, losses, damages (including indirect or consequential damage) and costs which you might incur as a result of the product being inaccurate or

Kidston Connection Project

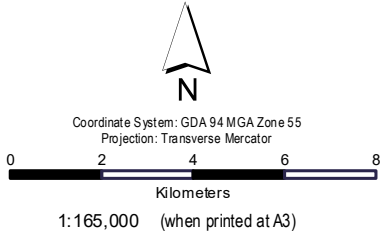
PROJECT LOCATION

PROJECT ID: 60577456
CREATED BY: JB
LAST MODIFIED: CA - 23/03/2022
VERSION: 4

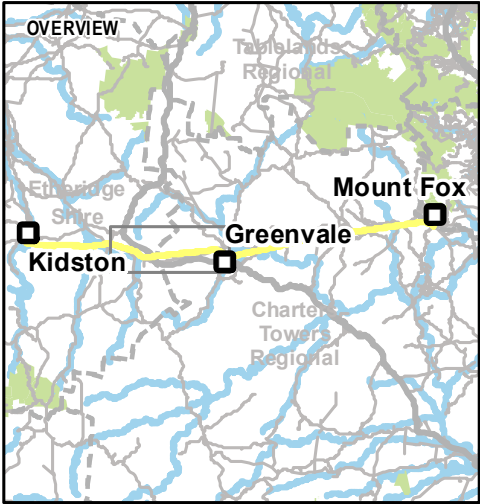
**Figure
F1-2**



AECOM does not warrant the accuracy or completeness of information displayed in this map and any person using it does so at their own risk. AECOM shall bear no responsibility or liability for any errors, faults, defects, omissions or in the information.



- Legend**
- Indicative Structure Locations
 - Places
 - Project Alignment
 - Watercourses
 - Ergon Lines
 - Project 10 km Buffer
 - Project 5 km Buffer



Data sources:
DCDB, Roads, Watercourses - DNRM 2017
Site Features and Layout - AECOM 2018
© SISP Imagery 2017

Disclaimer:
While every care is taken to ensure the accuracy of the Information Product, the State of Queensland makes no representations or warranties about its accuracy, reliability, completeness or suitability for any particular purpose and disclaims all responsibility and all liability (including without limitation, liability in negligence) for all expenses, losses, damages (including indirect or consequential damage) and costs which you might incur as a result of the product being inaccurate or

Kidston Connection Project

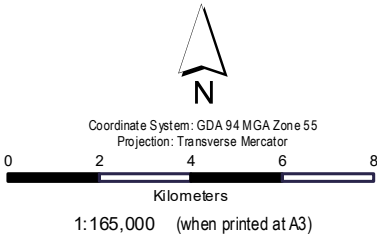
PROJECT LOCATION

PROJECT ID: 60577456
CREATED BY: JB
LAST MODIFIED: CA - 28/09/2021
VERSION: 4

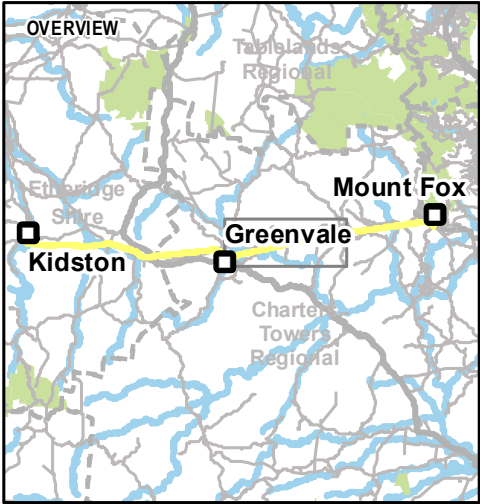
**Figure
F1-3**



AECOM does not warrant the accuracy or completeness of information displayed in this map and any person using it does so at their own risk. AECOM shall bear no responsibility or liability for any errors, omissions, faults, defects, or misstatements in the information.



- Legend**
- Indicative Structure Locations
 - Project Alignment
 - Watercourses
 - Ergon Lines
 - ▨ Project 10 km Buffer
 - ▨ Project 5 km Buffer



Data sources:
DCDB, Roads, Watercourses - DNRM 2017
Site Features and Layout - AECOM 2018
© SISIP Imagery 2017

Disclaimer:
While every care is taken to ensure the accuracy of the Information Product, the State of Queensland makes no representations or warranties about its accuracy, reliability, completeness or suitability for any particular purpose and disclaims all responsibility and all liability (including without limitation, liability in negligence) for all expenses, losses, damages (including indirect or consequential damage) and costs which you might incur as a result of the product being inaccurate or

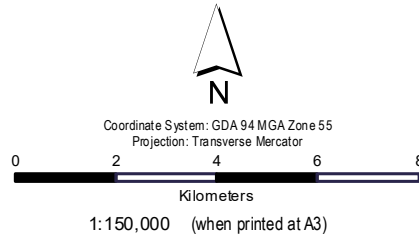
Kidston Connection Project

PROJECT LOCATION

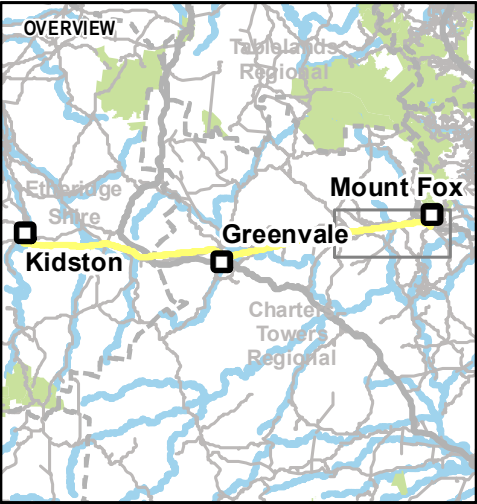
PROJECT ID:	60577456	Figure F1-4
CREATED BY:	JB	
LAST MODIFIED:	CA - 28/09/2021	
VERSION:	4	



AECOM does not warrant the accuracy or completeness of information displayed in this map and any person using it does so at their own risk. AECOM shall bear no responsibility or liability for any errors, faults, defects, omissions in the information.



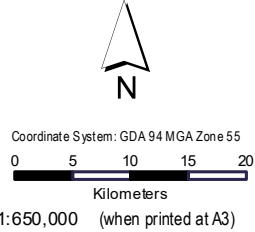
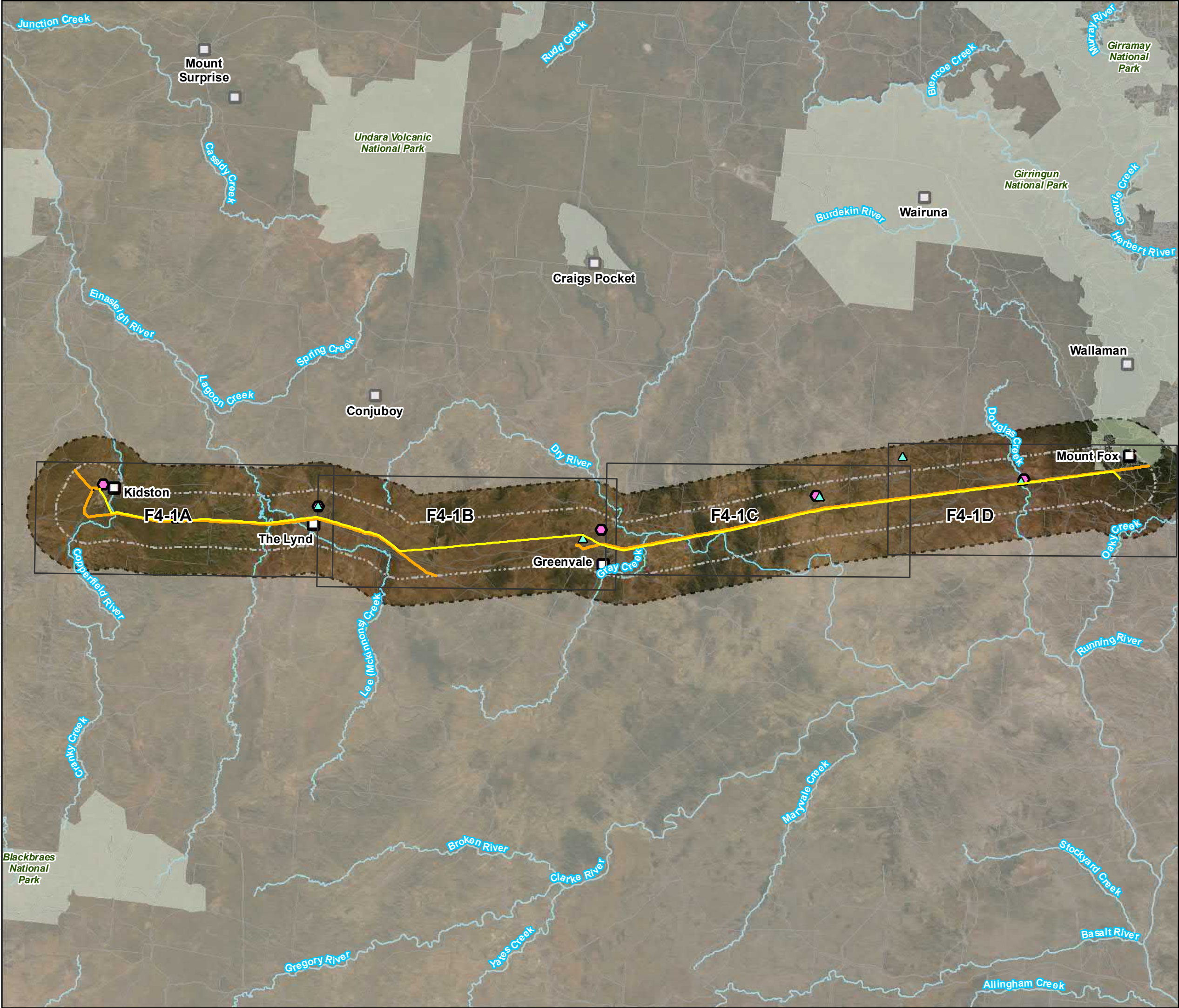
- Legend**
- Indicative Structure Locations
 - Places
 - Project Alignment
 - Watercourses
 - Ergon Lines
 - Protected Areas
 - Guybal Munjan Switching Station
 - Project 10 km Buffer
 - Project 5 km Buffer



Data sources:
DCDB, Roads, Watercourses - DNRM 2017
Site Features and Layout - AECOM 2018
© SISP Imagery 2017

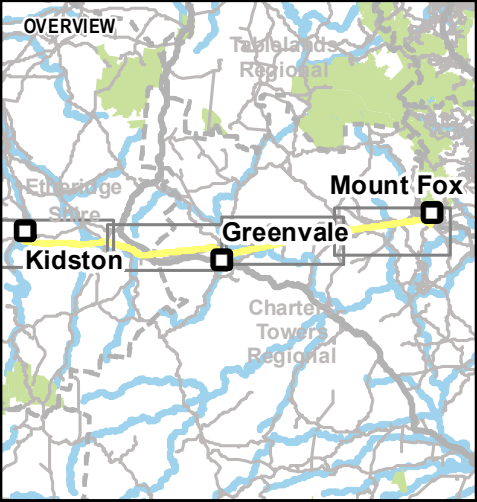
Disclaimer:
While every care is taken to ensure the accuracy of the Information Product, the State of Queensland makes no representations or warranties about its accuracy, reliability, completeness or suitability for any particular purpose and disclaims all responsibility and all liability (including without limitation, liability in negligence) for all expenses, losses, damages (including indirect or consequential damage) and costs which you might incur as a result of the product being inaccurate or

Kidston Connection Project		
PROJECT LOCATION		
PROJECT ID:	60577456	Figure F1-5
CREATED BY:	JB	
LAST MODIFIED:	AJS - 23/03/2022	
VERSION:	3	



Legend

- Water Source
- Temporary Work Area
- Places
- Project Alignment
- Watercourses
- Ergon Lines
- Protected Areas
- Project 10 km Buffer
- Project 5 km Buffer



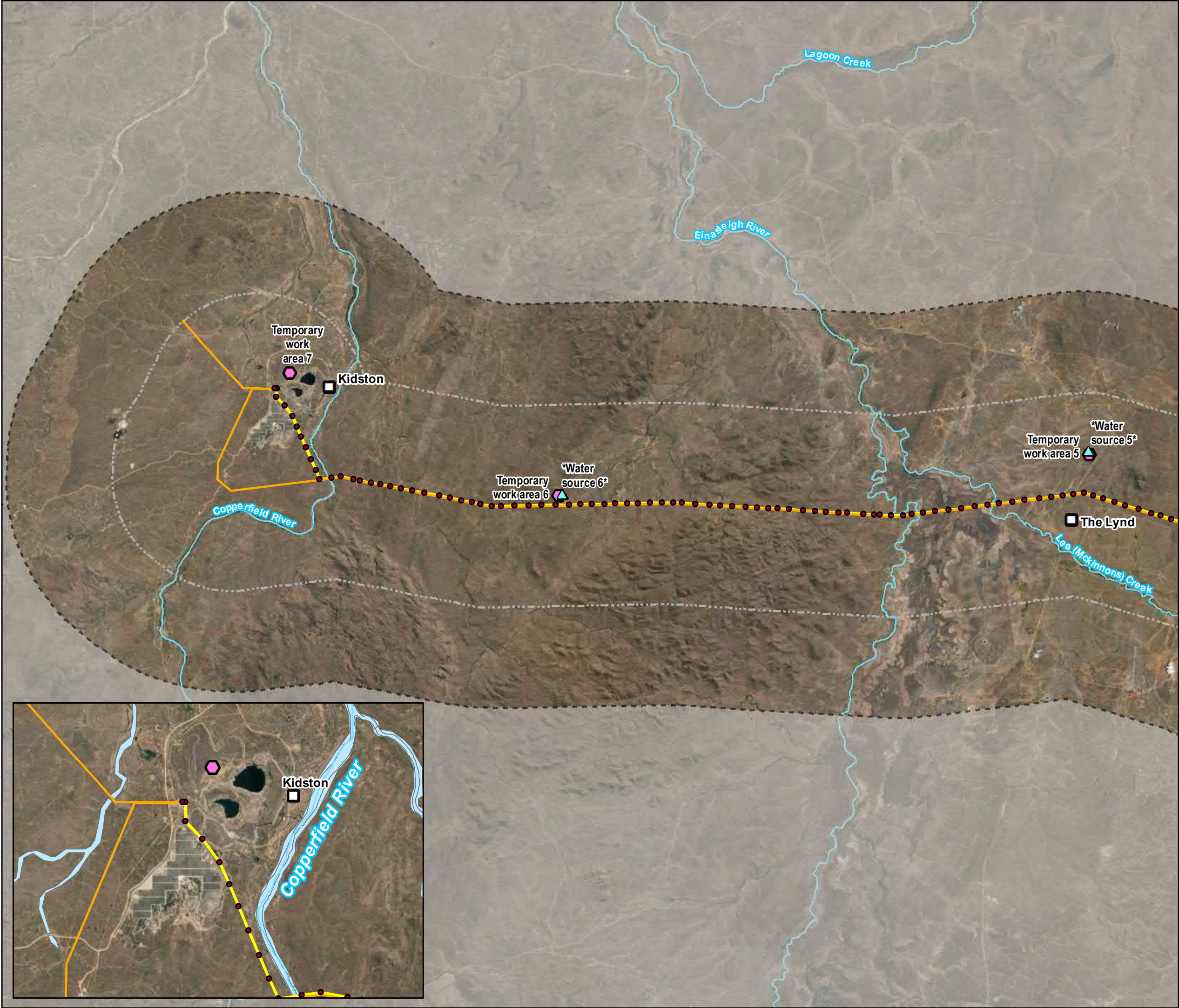
Data sources:
DCDB, Roads, Watercourses - DNRM 2017
Site Features and Layout - AECOM 2018
© SISIP Imagery 2017

Disclaimer:
While every care is taken to ensure the accuracy of the Information Product, the State of Queensland makes no representations or warranties about its accuracy, reliability, completeness or suitability for any particular purpose and disclaims all responsibility and all liability (including without limitation, liability in negligence) for all expenses, losses, damages (including indirect or consequential damage) and costs which you might incur as a result of the product being inaccurate or

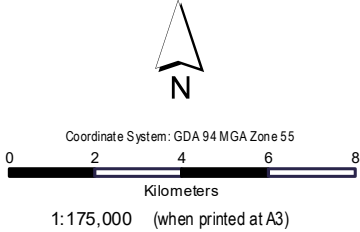
Kidston Connection Project

ANCILLARY WORK AREAS

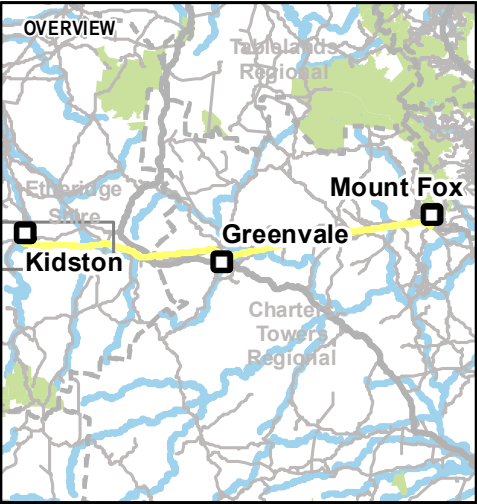
PROJECT ID:	60577456	Figure F2-1
CREATED BY:	JB	
LAST MODIFIED:	AJS - 23/03/2022	
VERSION:	3	



AECOM does not warrant the accuracy or completeness of information displayed in this map and any person using it does so at their own risk. AECOM shall bear no responsibility or liability for any errors, omissions, faults, defects, or misstatements in the information.



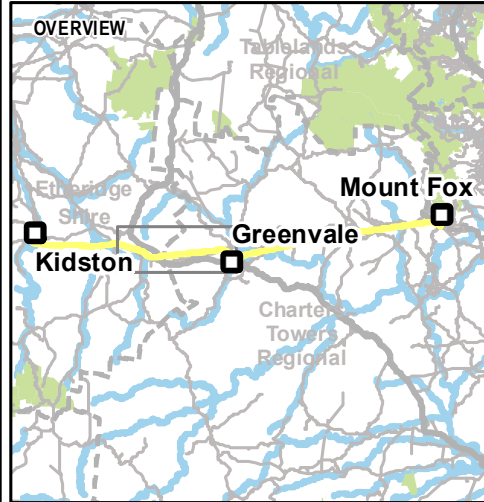
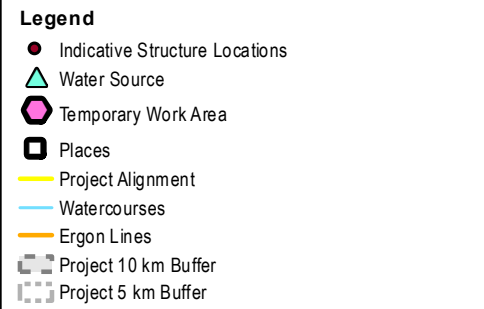
- Legend**
- Indicative Structure Locations
 - Water Source
 - Temporary Work Area
 - Places
 - Watercourses
 - Ergon Lines
 - Protected Areas
 - Project 10 km Buffer
 - Project 5 km Buffer
 - Project Alignment



Data sources:
 DCDB, Roads, Watercourses - DNRM 2017
 Site Features and Layout - AECOM 2018
 © SISIP Imagery 2017

Disclaimer:
 While every care is taken to ensure the accuracy of the Information Product, the State of Queensland makes no representations or warranties about its accuracy, reliability, completeness or suitability for any particular purpose and disclaims all responsibility and all liability (including without limitation, liability in negligence) for all expenses, losses, damages (including indirect or consequential damage) and costs which you might incur as a result of the product being inaccurate or

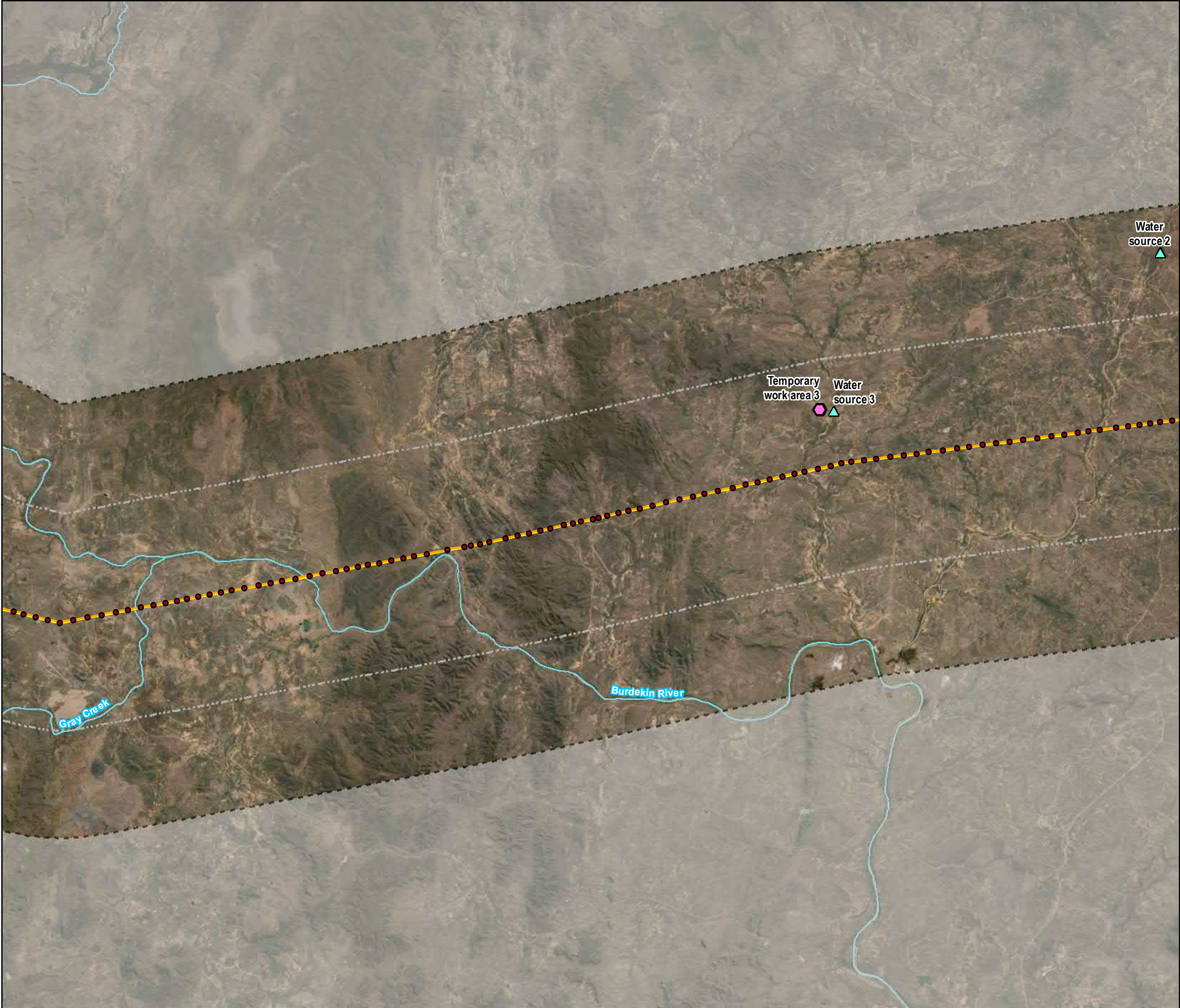
Kidston Connection Project		
ANCILLARY WORK AREAS		
PROJECT ID:	60577456	Figure F2-2
CREATED BY:	JB	
LAST MODIFIED:	AJS - 23/03/2022	
VERSION:	3	



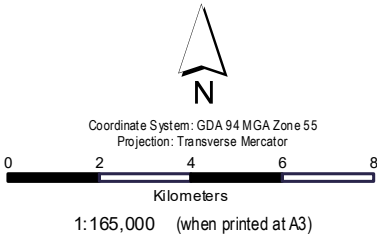
Disclaimer:
While every care is taken to ensure the accuracy of the Information Product, the State of Queensland makes no representations or warranties about its accuracy, reliability, completeness or suitability for any particular purpose and disclaims all responsibility and all liability (including without limitation, liability in negligence) for all expenses, losses, damages (including indirect or consequential damage) and costs which you might incur as a result of the product being inaccurate or

ANCILLARY WORK AREAS

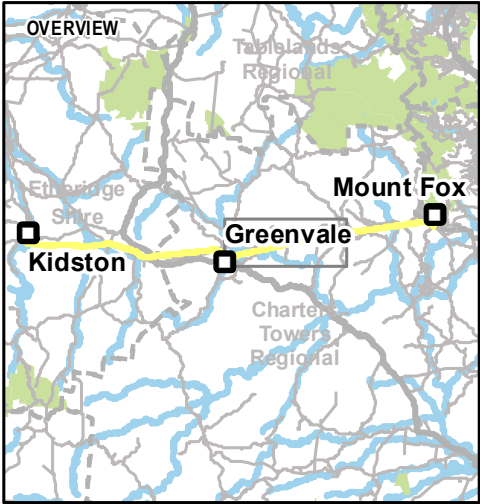
PROJECT ID: 60577456
CREATED BY: JB
LAST MODIFIED: CA - 23/03/2022
VERSION: 4



AECOM does not warrant the accuracy or completeness of information displayed in this map and any person using it does so at their own risk. AECOM shall bear no responsibility or liability for any errors, faults, defects, omissions in the information.



- Legend**
- Indicative Structure Locations
 - ▲ Water Source
 - ⬡ Temporary Work Area
 - Project Alignment
 - Watercourses
 - Ergon Lines
 - ⬢ Project 10 km Buffer
 - ⬢ Project 5 km Buffer



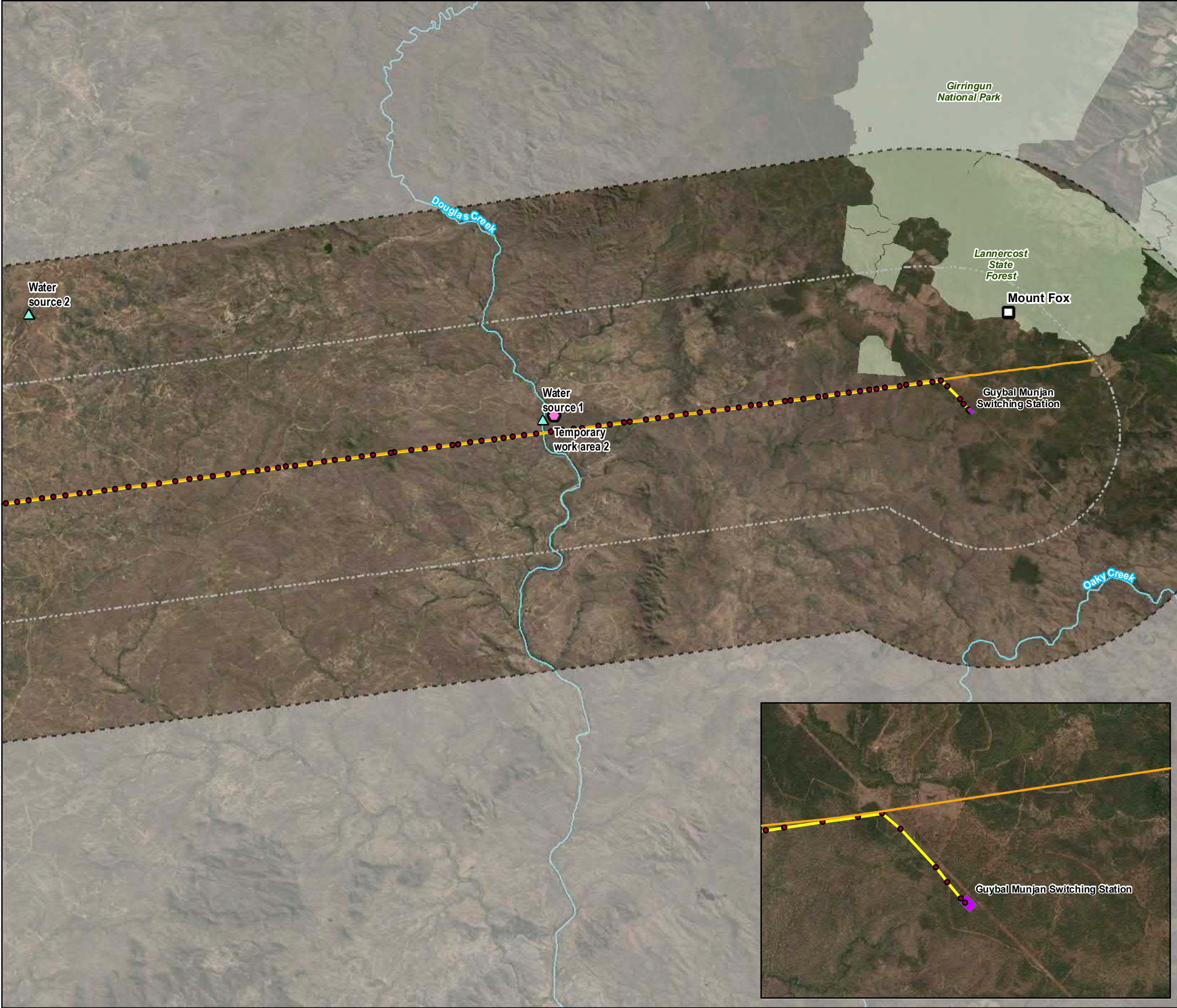
Data sources:
 DCDB, Roads, Watercourses - DNRM 2017
 Site Features and Layout - AECOM 2018
 © SISIP Imagery 2017

Disclaimer:
 While every care is taken to ensure the accuracy of the Information Product, the State of Queensland makes no representations or warranties about its accuracy, reliability, completeness or suitability for any particular purpose and disclaims all responsibility and all liability (including without limitation, liability in negligence) for all expenses, losses, damages (including indirect or consequential damage) and costs which you might incur as a result of the product being inaccurate or

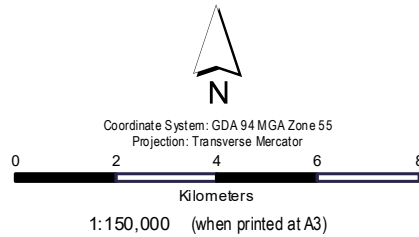
Kidston Connection Project

ANCILLARY WORK AREAS

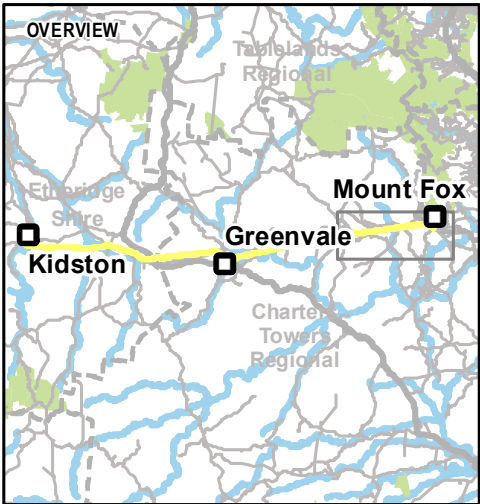
PROJECT ID:	60577456	Figure F2-4
CREATED BY:	JB	
LAST MODIFIED:	CA - 24/03/2022	
VERSION:	4	



AECOM does not warrant the accuracy or completeness of information displayed in this map and any person using it does so at their own risk. AECOM shall bear no responsibility or liability for any errors, faults, defects, omissions in the information.



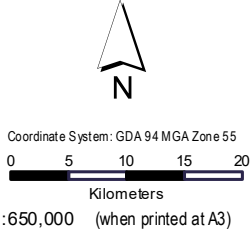
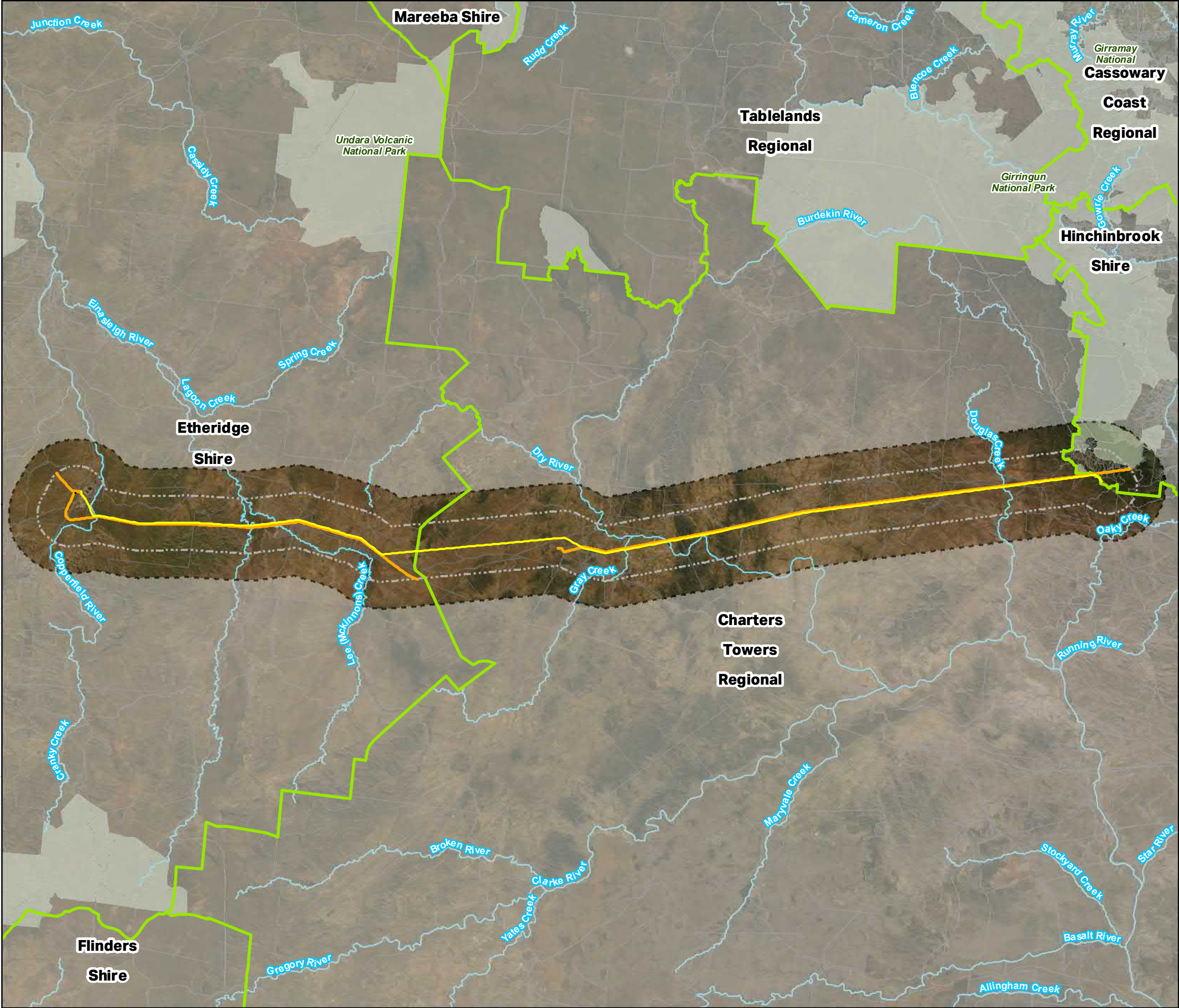
- Legend**
- Indicative Structure Locations
 - Water Source
 - Temporary Work Area
 - Places
 - Project Alignment
 - Watercourses
 - Ergon Lines
 - Protected Areas
 - Guybal Munjan Switching Station
 - Project 10 km Buffer
 - Project 5 km Buffer



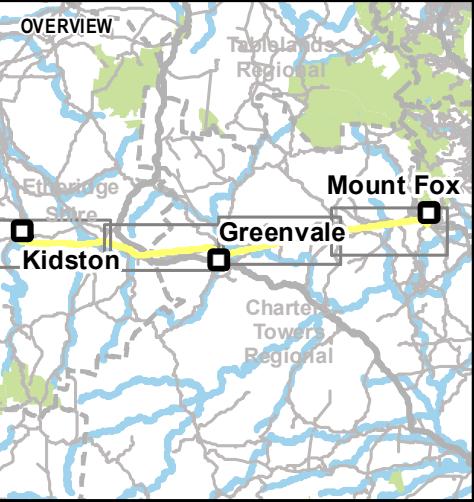
Data sources:
DCDB, Roads, Watercourses - DNRM 2017
Site Features and Layout - AECOM 2018
© SISIP Imagery 2017

Disclaimer:
While every care is taken to ensure the accuracy of the Information Product, the State of Queensland makes no representations or warranties about its accuracy, reliability, completeness or suitability for any particular purpose and disclaims all responsibility and all liability (including without limitation, liability in negligence) for all expenses, losses, damages (including indirect or consequential damage) and costs which you might incur as a result of the product being inaccurate or

Kidston Connection Project		
ANCILLARY WORK AREAS		
PROJECT ID:	60577456	Figure F2-5
CREATED BY:	JB	
LAST MODIFIED:	AJS - 23/03/2022	
VERSION:	3	



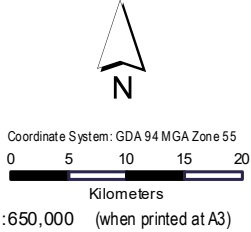
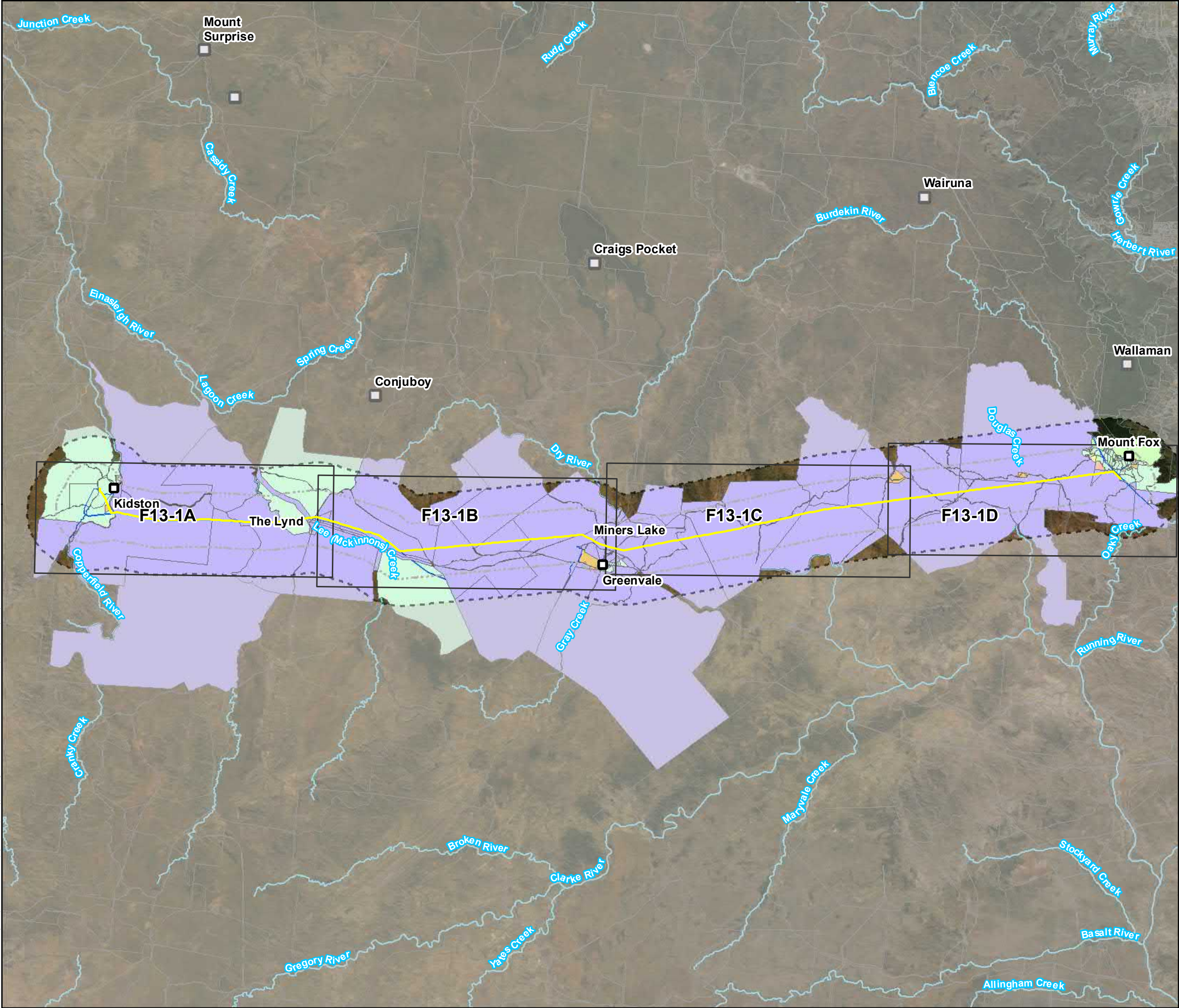
- Legend**
- Project Alignment
 - Watercourses
 - Ergon Lines
 - Local_Government_Areas
 - Protected Areas
 - Project 10 km Buffer
 - Project 5 km Buffer



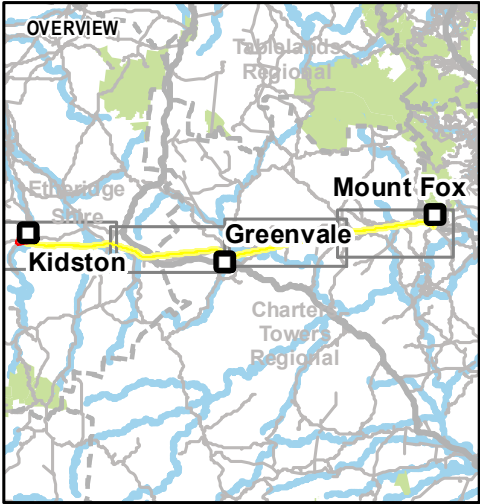
Data sources:
DCDB, Roads, Watercourses - DNRM 2017
Site Features and Layout - AECOM 2018
© SISIP Imagery 2017

Disclaimer:
While every care is taken to ensure the accuracy of the Information Product, the State of Queensland makes no representations or warranties about its accuracy, reliability, completeness or suitability for any particular purpose and disclaims all responsibility and all liability (including without limitation, liability in negligence) for all expenses, losses, damages (including indirect or consequential damage) and costs which you might incur as a result of the product being inaccurate or

PROJECT LOCATION		
PROJECT ID:	60577456	Figure F3-1
CREATED BY:	JB	
LAST MODIFIED:	CA- 23/03/2022	
VERSION:	1	



- Legend**
- Places
 - Project Alignment
 - Watercourses
 - Project 10 km Buffer
 - Project 5 km Buffer
 - Land Tenure**
 - Easement
 - Freehold
 - Lands Lease
 - National Park
 - Reserve
 - State Forest
 - State Land

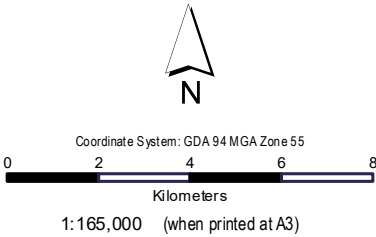
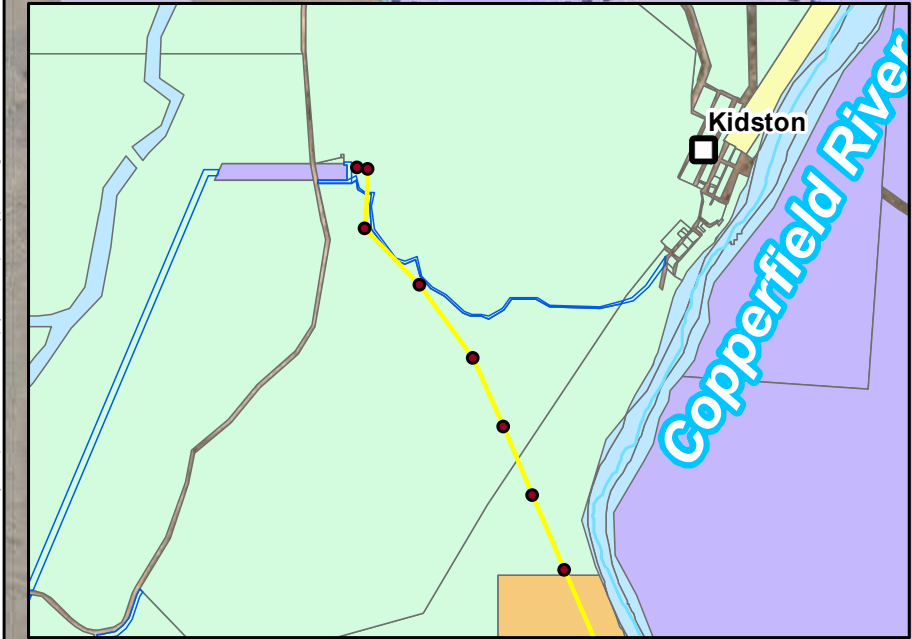
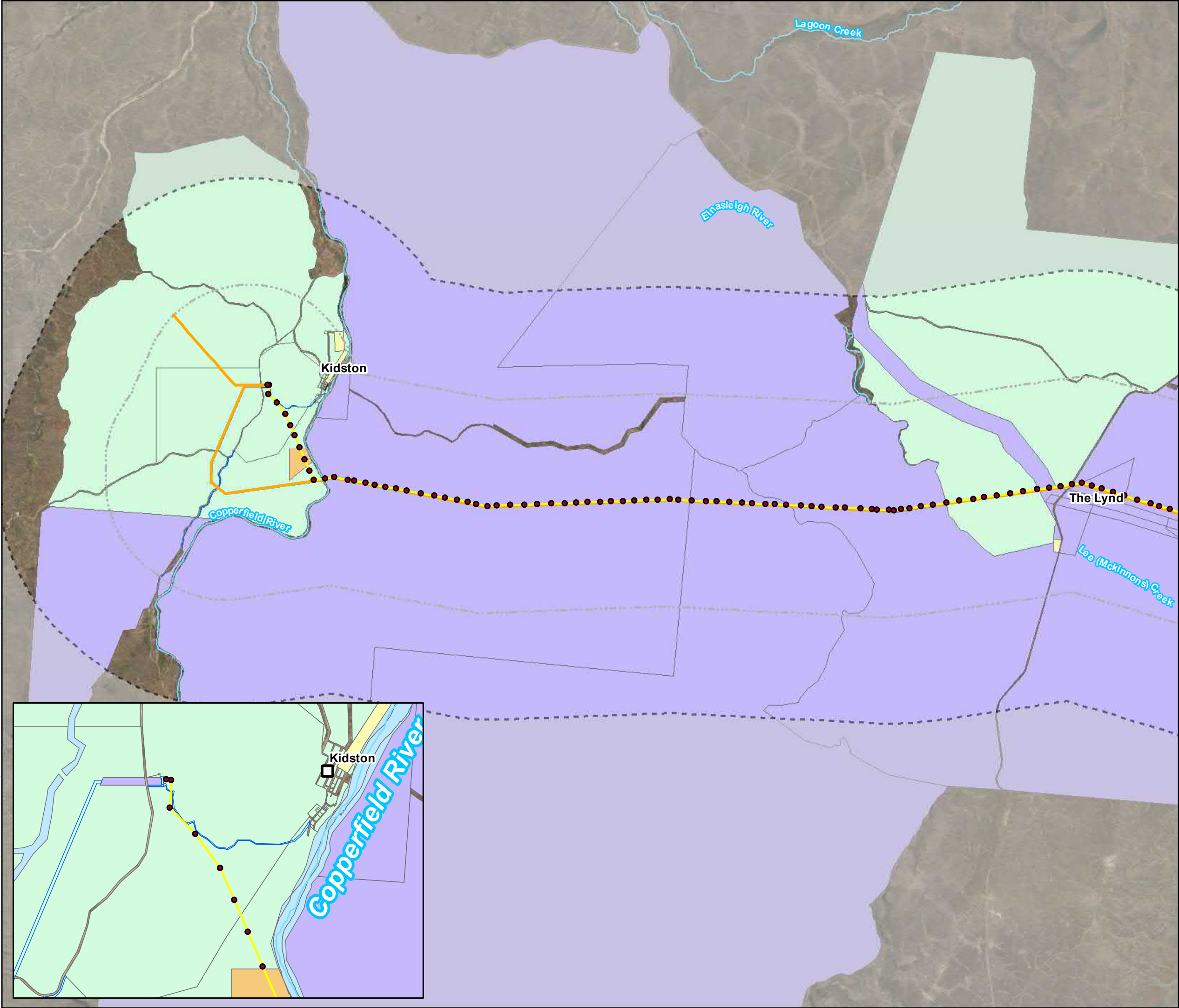


Data sources:
DCDB, Roads, Watercourses - DNRM 2017
Site Features and Layout - AECOM 2018
© SISIP Imagery 2017

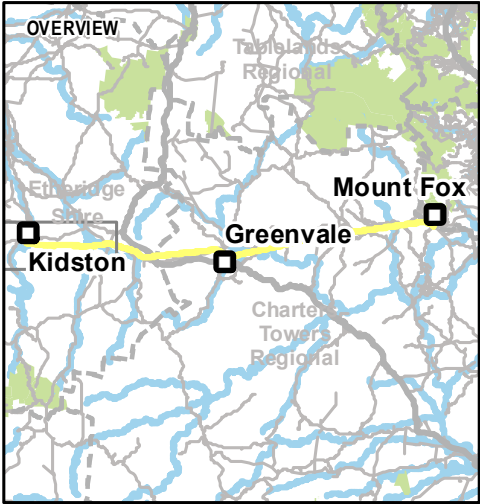
Disclaimer:
While every care is taken to ensure the accuracy of the Information Product, the State of Queensland makes no representations or warranties about its accuracy, reliability, completeness or suitability for any particular purpose and disclaims all responsibility and all liability (including without limitation, liability in negligence) for all expenses, losses, damages (including indirect or consequential damage) and costs which you might incur as a result of the product being inaccurate or

Kidston Connection Project

TENURE		Figure F4-1
PROJECT ID:	60577456	
CREATED BY:	JB	
LAST MODIFIED:	CA - 15/09/2021	
VERSION:	4	



- Legend**
- Indicative Structure Locations
 - Places
 - Project Alignment
 - Ergon Lines
 - Watercourses
 - Protected Areas
 - Project 10 km Buffer
 - Project 5 km Buffer
 - Land Tenure**
 - Easement
 - Freehold
 - Lands Lease
 - Reserve
 - State Land

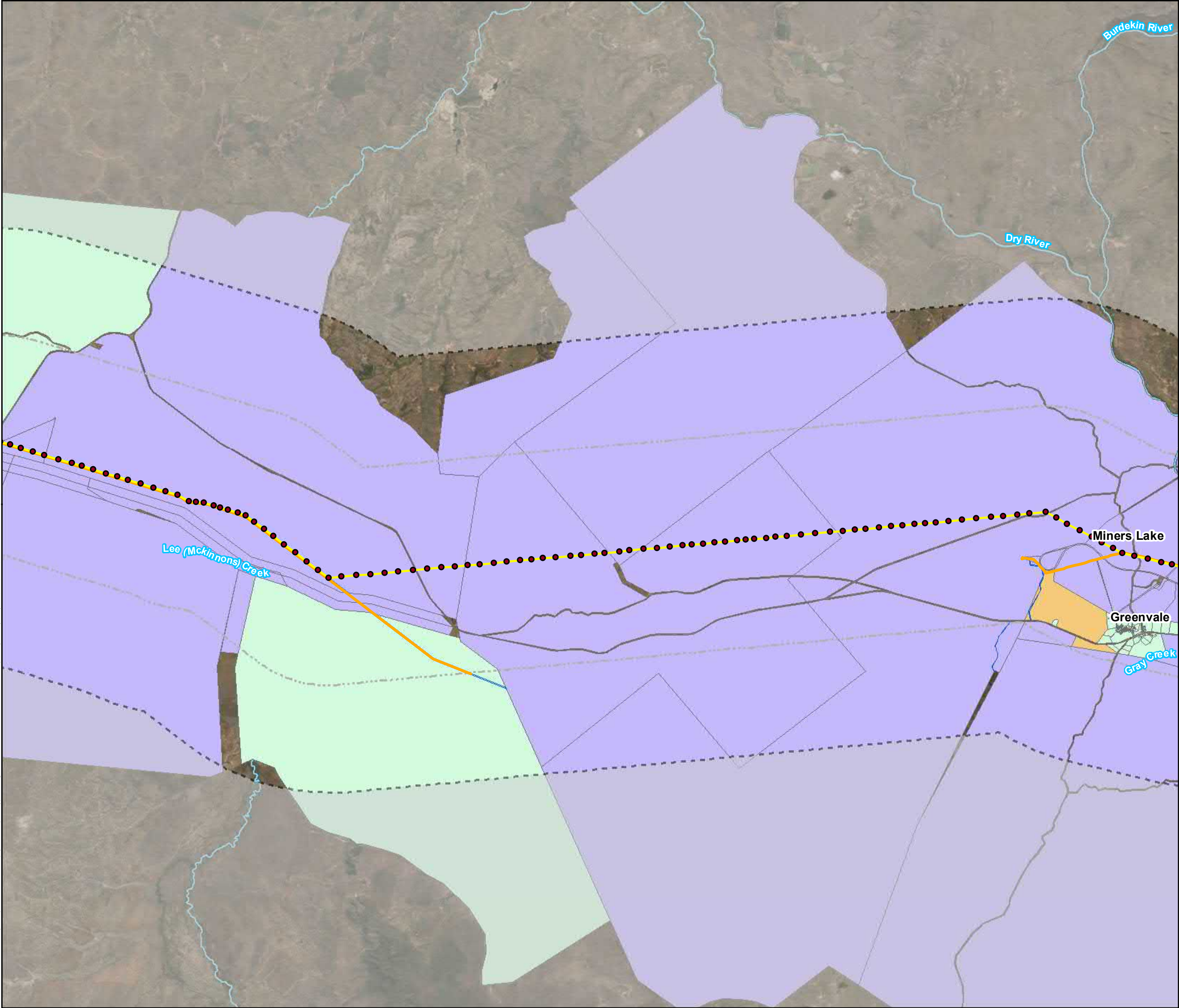


Data sources:
DCDB, Roads, Watercourses - DNRM 2017
Site Features and Layout - AECOM 2018
© SISP Imagery 2017

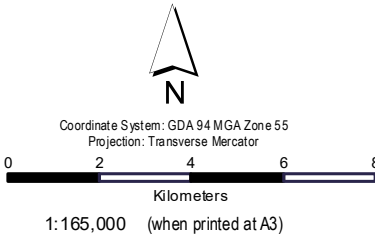
Disclaimer:
While every care is taken to ensure the accuracy of the Information Product, the State of Queensland makes no representations or warranties about its accuracy, reliability, completeness or suitability for any particular purpose and disclaims all responsibility and all liability (including without limitation, liability in negligence) for all expenses, losses, damages (including indirect or consequential damage) and costs which you might incur as a result of the product being inaccurate or

Kidston Connection Project

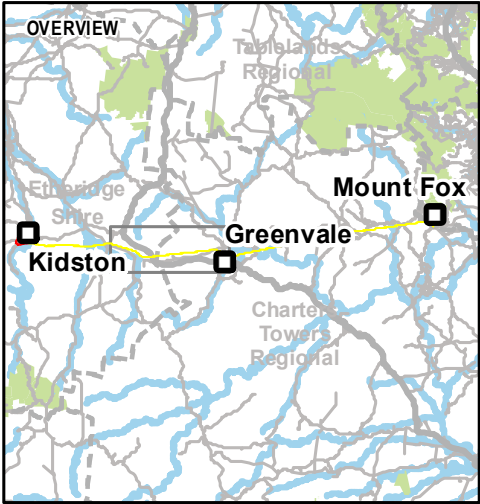
TENURE		Figure F4-2
PROJECT ID:	60577456	
CREATED BY:	JB	
LAST MODIFIED:	CA - 15/09/2021	
VERSION:	4	



AECOM does not warrant the accuracy or completeness of information displayed in this map and any person using it does so at their own risk. AECOM shall bear no responsibility or liability for any errors, faults, defects, omissions in the information.



- Legend**
- Indicative Structure Locations
 - Places
 - Project Alignment
 - Ergon Lines
 - Watercourses
 - Project 10 km Buffer
 - Project 5 km Buffer
 - Land Tenure**
 - Easement
 - Freehold
 - Lands Lease
 - Reserve
 - State Land

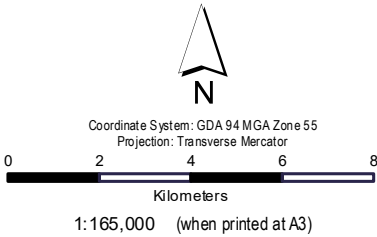
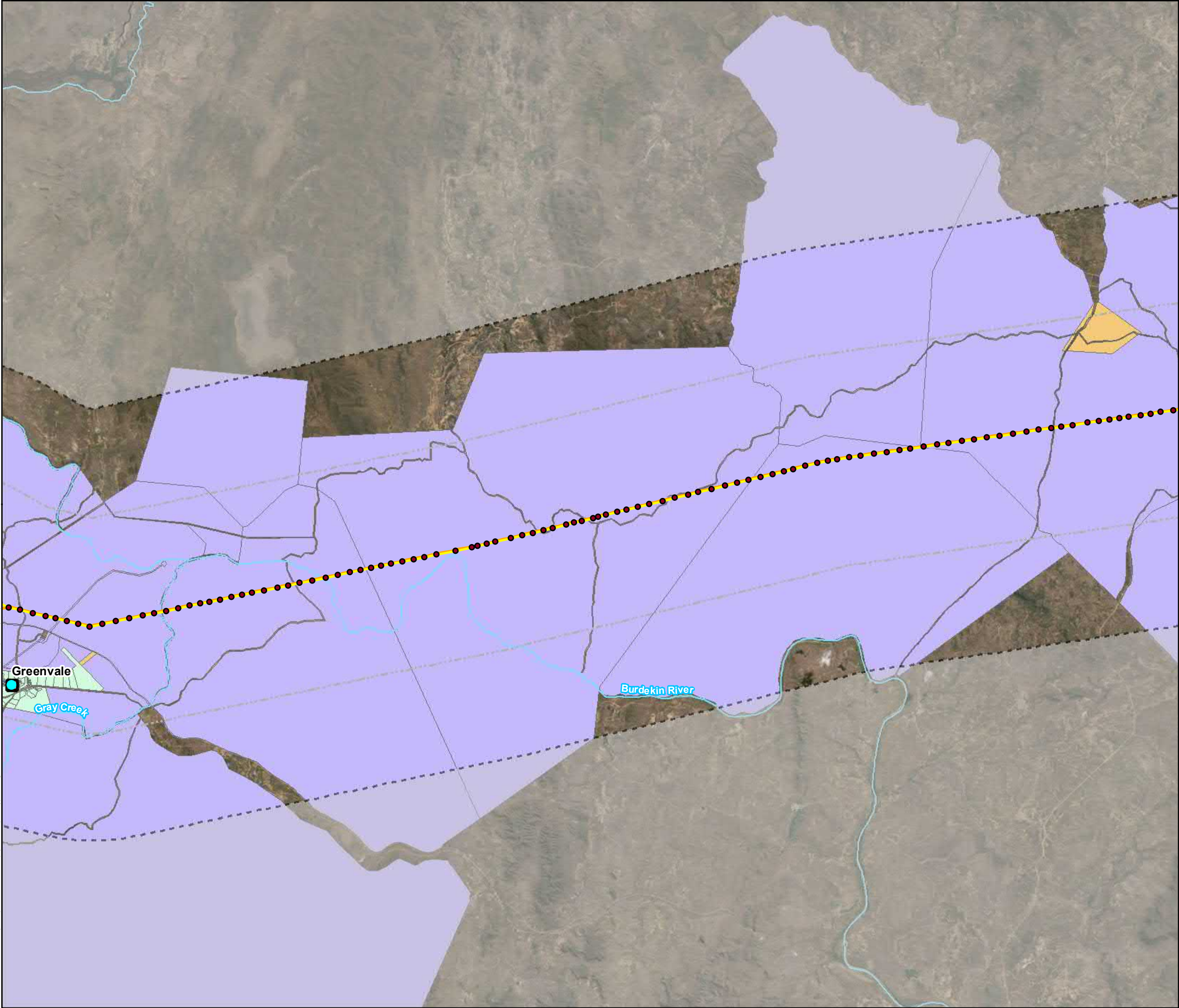


Data sources:
DCDB, Roads, Watercourses - DNRM 2017
Site Features and Layout - AECOM 2018
© SISIP Imagery 2017

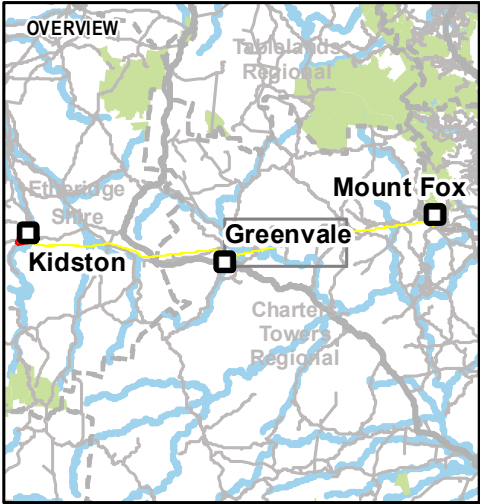
Disclaimer:
While every care is taken to ensure the accuracy of the Information Product, the State of Queensland makes no representations or warranties about its accuracy, reliability, completeness or suitability for any particular purpose and disclaims all responsibility and all liability (including without limitation, liability in negligence) for all expenses, losses, damages (including indirect or consequential damage) and costs which you might incur as a result of the product being inaccurate or

Kidston Connection Project

TENURE		Figure F4-3
PROJECT ID:	60577456	
CREATED BY:	JB	
LAST MODIFIED:	CA - 15/09/2021	
VERSION:	4	



- Legend**
- Indicative Structure Locations
 - Places
 - Project Alignment
 - Ergon Lines
 - Watercourses
 - Project 10 km Buffer
 - Project 5 km Buffer
- Land Tenure**
- Easement
 - Freehold
 - Lands Lease
 - Reserve
 - State Land

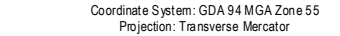


Data sources:
DCDB, Roads, Watercourses - DNRM 2017
Site Features and Layout - AECOM 2018
© SISP Imagery 2017









Disclaimer:
While every care is taken to ensure the accuracy of the Information Product, the State of Queensland makes no representations or warranties about its accuracy, reliability, completeness or suitability for any particular purpose and disclaims all responsibility and all liability (including without limitation, liability in negligence) for all expenses, losses, damages (including indirect or consequential damage) and costs which you might incur as a result of the product being inaccurate or

Kidston Connection Project

TENURE		Figure F4-4
PROJECT ID:	60577456	
CREATED BY:	JB	
LAST MODIFIED:	CA - 15/09/2021	
VERSION:	4	

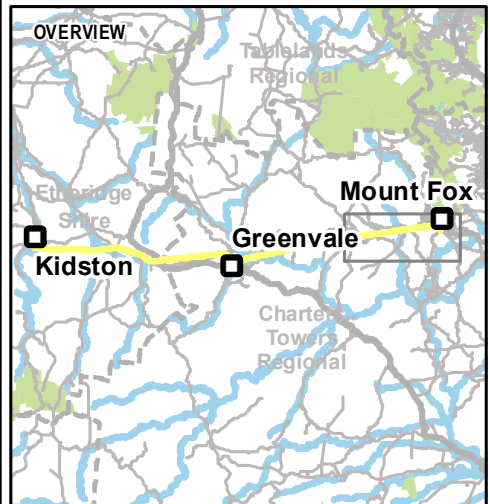


Legend

-  Indicative Structure Locations
-  Places
-  Project Alignment
-  Ergon Lines
-  Watercourses
-  Guybal Munjan Switching Station
-  Project 10 km Buffer
-  Project 5 km Buffer

Land Tenure

-  Easement
-  Freehold
-  Lands Lease
-  National Park
-  Reserve
-  State Forest
-  State Land



Data sources:

DCDB, Roads, Watercourses - DNRM 2017
Site Features and Layout - AECOM 2018
© SISP Imagery 2017

Disclaimer:

While every care is taken to ensure the accuracy of the Information Product, the State of Queensland makes no representations or warranties about its accuracy, reliability, completeness or suitability for any particular purpose and disclaims all responsibility and all liability (including without limitation, liability in negligence) for all expenses, losses, damages (including indirect or consequential damage) and costs which you might incur as a result of the product being inaccurate or

Kidston Connection Project

TENURE

PROJECT ID: 60577456
CREATED BY: JB
LAST MODIFIED: CA - 23/09/2021
VERSION: 4

**Figure
F4-5**

Lot	Registered Plan	Tenure	Local Government Area	Project Component			
				Switching Station	Transmission Line Corridor	Temporary Work Area	Water Sourcing and Extraction
1	CLK23	Lands Lease	Charters Towers Regional				
1	OC64	Lands Lease	Charters Towers Regional				
3	CLK34	Lands Lease	Charters Towers Regional				
3	WU48	Lands Lease	Charters Towers Regional				
5	CLK23	Lands Lease	Charters Towers Regional				
6	WU50	Lands Lease	Charters Towers Regional				
11	CLK26	Lands Lease	Charters Towers Regional				
501	SP232789	Lands Lease	Charters Towers Regional				
547	SP242570	Lands Lease	Charters Towers Regional				
3198	PH2177	Lands Lease	Charters Towers Regional				
5234	SP275834	Lands Lease	Charters Towers Regional				
5138	SP262310	Lands Lease	Charters Towers Regional				
1	SP289310	Freehold	Etheridge Shire				
1	CD25	Freehold	Etheridge Shire				
1	PER6688	Lands Lease	Etheridge Shire				
2	SP289310	Freehold	Etheridge Shire				
3	CD12	Lands Lease	Etheridge Shire				
4	CD35	Lands Lease	Etheridge Shire				
14	LH8	Lands Lease	Etheridge Shire				
44	USL33	State Land	Etheridge Shire				
66	SP304951	Freehold	Etheridge Shire				

Lot	Registered Plan	Tenure	Local Government Area	Project Component			
				Switching Station	Transmission Line Corridor	Temporary Work Area	Water Sourcing and Extraction
182	PH995	Lands Lease	Etheridge Shire				
26	WU4	Freehold	Hinchinbrook Shire				
100	SP281848	Freehold	Hinchinbrook Shire				
591	SP302249	Freehold	Hinchinbrook Shire				