

# Meandu Mine Transmission Line Relocation Project

## Environmental Assessment Report release



APRIL 2023

### About Powerlink

Powerlink is a leading provider of electricity transmission services, delivering safe, cost effective and reliable network solutions. Our transmission network extends 1,700 kilometres from north of Cairns to the New South Wales border. Our purpose is to connect Queenslanders to a world-class energy future, providing electricity to more than five million Queenslanders and 238,000 businesses.

Since mid-2022, Powerlink has been engaging with landholders, the community, Traditional Owners and other stakeholders on a project to relocate a short section of our existing Tarong to Middle Ridge transmission line, to safely accommodate future proposed mining activities at Stanwell Corporation Limited's Meandu Mine. This transmission line plays an important role in safely and efficiently transporting electricity generated at the Tarong power stations to the South West Queensland area.

### About the King 2 East (K2E) Project

Meandu Mine is an open-cut coal mine in the South Burnett, owned by Stanwell and operated by BUMA Australia, under strict safety and environmental conditions. Located in the South Burnett, the mine supplies black thermal coal to the adjacent Tarong power stations.

The Tarong power stations, which are among the youngest and most reliable generators in the National Electricity Market, will continue to provide a secure supply of electricity as the market transitions towards a lower carbon future. The proposed K2E Project will extend the current Meandu Mine by approximately 187 hectares (a seven per cent increase), within the existing mining lease. For more information, visit [www.stanwell.com/meandu-mine-king-2-east-project](http://www.stanwell.com/meandu-mine-king-2-east-project).

Stanwell intends to conduct mining within the current surface rights area located underneath this transmission line and is also currently seeking approval to increase the surface rights area of the mine, known as the King 2 East (K2E) project.

### Acknowledgement

Powerlink acknowledges the Traditional Owners and their custodianship of the lands and waters of Queensland and in particular, the lands on which we operate. We pay our respect to their Ancestors, Elders and knowledge holders and recognise their deep history and ongoing connection to Country.

### Key points

- **As part of the Ministerial Infrastructure Designation approvals process under the *Planning Act 2016* to confirm the most appropriate location for this relocated section of transmission line, Powerlink has prepared an **Environmental Assessment Report (EAR)**. This report has been submitted to the **Queensland Government Planning Minister** for planning approval and has now been publicly released for review and comment.**
- The EAR identifies the preferred alignment for the short section (4.6km) of relocated transmission line. Following engagement with Stanwell and other affected landholders, the preferred alignment is directly to the east of Stanwell's proposed K2E project. This minimises impacts on surrounding landholders and the wider community, and ensures the long-term suitability of transmission infrastructure in the area.
- **Submissions on the EAR are welcome by close of business on Monday 29 May 2023.**
- No final decisions on the transmission line's location will be made until all required approvals have been achieved.
- We thank all directly affected landholders and Traditional Owners for their ongoing assistance and involvement in meetings to progress the project. We will continue to keep stakeholders informed.



**SAFE FOR LIFE**  
Everyone. Everywhere. Everyday.

## About the EAR

The EAR was prepared by environmental specialists and involved ongoing engagement with directly affected landholders and other stakeholders, and environmental and technical assessments including on-ground cadastral and Cultural Heritage surveys, tower surveys and pegging.

The preferred alignment for the relocated section of transmission line is identified in the EAR and is located within the recommended corridor outlined in the Final Corridor Selection Report, published in January 2023.

Following continued collaboration with Stanwell regarding their intended future mining activities, Powerlink is proposing to locate the replacement transmission line section immediately east of the proposed K2E boundary. This ensures the replacement line is as short as possible and minimises impacts to the surrounding area. The preferred alignment maximises the State Forest and industrial land uses in the region, with the relocated section of line proposed to traverse around 3.4km of State Forest and the remaining 1.2km in land owned by Stanwell.

The proposed corridor is located several kilometres away from the nearest rural residential properties. This section of line is also largely obscured by State Forest, which minimises visual amenity impacts.

The EAR identifies the potential environmental, economic and social impacts of the project, and how those impacts can be mitigated or managed, across the whole lifecycle of the infrastructure where possible.

The report is a public document and can be accessed in several ways:

- downloading from Powerlink's website: [www.powerlink.com.au/meandu](http://www.powerlink.com.au/meandu)
- downloading from the Department of State Development, Infrastructure, Local Government and Planning's (DSDILGP) website: [www.statedevelopment.qld.gov.au/mid-consultations](http://www.statedevelopment.qld.gov.au/mid-consultations) (visit the 'Requests open for consultation' tab towards the bottom of this webpage and search for 'Meandu Mine')
- accessing a USB or hard copy by emailing Powerlink at [projects@powerlink.com.au](mailto:projects@powerlink.com.au) or phoning 1800 635 369.

## Making a submission on the EAR

Formal submissions on the EAR are now invited and must be received in writing by the Planning Minister by close of business on 29 May 2023 via DSDILGP. Submissions can be lodged in several ways:

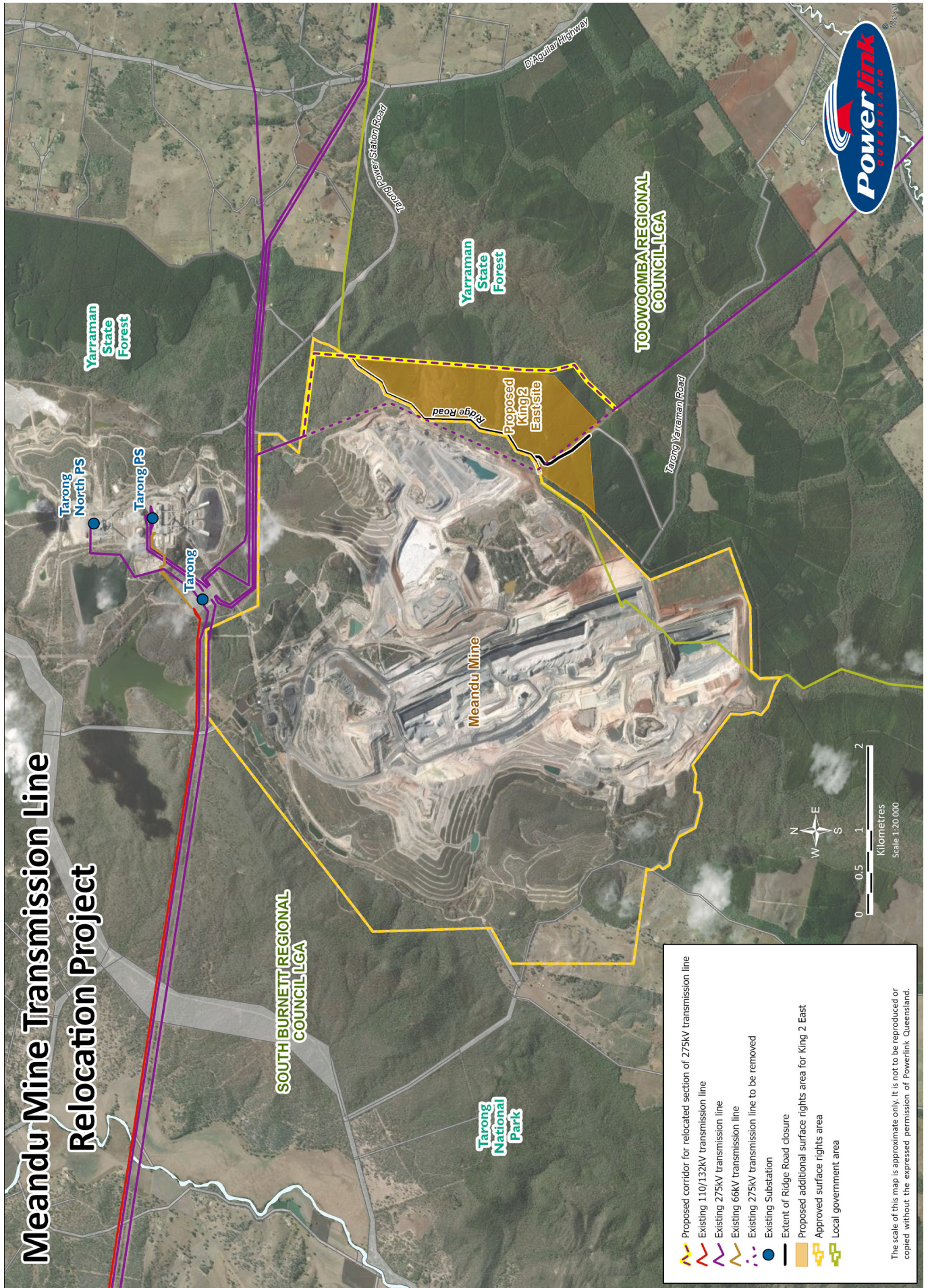
- online: [www.statedevelopment.qld.gov.au/mid-consultations](http://www.statedevelopment.qld.gov.au/mid-consultations)
- email: [infrastructuredesignation@dsdilgp.qld.gov.au](mailto:infrastructuredesignation@dsdilgp.qld.gov.au)
- post: PO Box 15009, City East, QLD, 4002.

For further information on the submission process, you can contact the Ministerial Infrastructure Designation team within the department on 1300 967 433 or at [infrastructuredesignation@dsdilgp.qld.gov.au](mailto:infrastructuredesignation@dsdilgp.qld.gov.au).

Stakeholders are welcome to make a submission on any of the topics in the EAR. As a guide, the adjacent table lists topics often raised during engagement and where to find information on these in the report.

Topic	Related sections of the EAR
Biosecurity	Section 4.9
Bushfire risk	Section 4.15
Community and stakeholder consultation	Section 3
Cultural Heritage	Section 4.12
Biodiversity and flora/fauna	Sections 4.7 and 4.8
Electric and magnetic fields	Section 4.14
Transport and traffic	Section 4.13
Visual amenity	Section 4.11

# Meandu Mine Transmission Line Relocation Project



	Proposed corridor for relocated section of 275kV transmission line
	Existing 110/132kV transmission line
	Existing 275kV transmission line
	Existing 66kV transmission line
	Existing 275kV transmission line to be removed
	Existing Substation
	Extent of Ridge Road closure
	Proposed additional surface rights area for King 2 East
	Approved surface rights area
	Local government area

The scale of this map is approximate only. It is not to be reproduced or copied without the expressed permission of Powerlink Queensland.



## Next steps

Planning approval is required before a decision will be made about the final alignment for the proposed transmission line.

### Current activity:

- Formal consultation on the EAR is being undertaken by the Planning Minister. Powerlink is also inviting submissions from anyone with an interest in the project.
- We are working directly with Traditional Owners in the project area to seek feedback and input on project planning, Cultural Heritage management and the EAR.
- We are continuing to engage with directly affected landholders to provide information on the planning approval process and seek their further input.

### Upcoming activities:

- The Planning Minister will review all submissions received on the EAR and provide Powerlink with information about matters raised. Powerlink will review this information, undertake any required additional investigations and respond by outlining any changes made.
- The Planning Minister will assess the EAR and consider all submissions. If approval is granted, the decision will be published in the Queensland Government Gazette and notification will be provided to directly affected landholders, relevant local governments and Powerlink.
- Initial construction crew mobilisation and preliminary site preparation works are planned to commence in late April 2023. We will engage with landholders, the community and other stakeholders regarding full construction works to provide further information on how impacts will be minimised or managed.


We thank all directly affected landholders, including the Traditional Owners, for their ongoing assistance and involvement in meetings to progress the project. We will continue to keep landholders, the community and other stakeholders informed.



## Further information

For more information on the Meandu Mine Transmission Line Relocation Project, please contact:

Brian Gover  
Property Project Manager  
Powerlink  
Ph: 07 3860 2235  
Email: [brian.gover@powerlink.com.au](mailto:brian.gover@powerlink.com.au)

 FREECALL: 1800 635 369  
(business hours)

 [projects@powerlink.com.au](mailto:projects@powerlink.com.au)

 [www.powerlink.com.au/meandu](http://www.powerlink.com.au/meandu)

 Connect:    



**SAFEFORLIFE**  
Everyone. Everywhere. Everyday.