

# Appendix B

Layout and clearing profile





# TARONG TO MIDDLE RIDGE 275kV SINGLE CIRCUIT TRANSMISSION LINE PLAN AND PROFILE

**1. CONDUCTOR**

1418-STR-H018 TO 1418-STR-7201  
TWIN AAAC SULPHUR  
DISPLAYED AT MAX. DESIGN TEMP 90°C

1418-STR-7201 TO 1418-STR-2626  
1 x AAAC SULPHUR  
DISPLAYED AT MAX. DESIGN TEMP 90°C

1418-STR-2626 TO 2450-STR-9907 (9908, 9909)  
1 x ACSR/GZ PAW PAW  
DISPLAYED AT MAX. DESIGN TEMP 90°C

2450-STR-9907 (9908, 9909) TO  
2450-STR-9911 (9912, 9913)  
1 x AAAC SULPHUR  
DISPLAYED AT MAX. DESIGN TEMP 90°C

2450-STR-9911 (9912, 9913) TO 1031-STR-9176  
1 x ACSR/GZ PAW PAW  
DISPLAYED AT MAX. DESIGN TEMP 90degC

1031-STR-9176 TO 1463-STR-1996  
1 x ACSR/GZ PAW PAW  
DISPLAYED AT MAX. DESIGN TEMP 120°C

1463-STR-1996 TO H014  
1 x AAAC SULPHUR  
DISPLAYED AT MAX. DESIGN TEMP 90°C

**2. EARTHWIRE/OPGW**

1418-STR-H018 TO 1418-STR-7201  
2 x ACSR/AC VOLLEYBALL 13.2mm

1418-STR-7201 TO  
2450-STR-9907 (9908, 9909)  
1 x ACSR/AC VOLLEYBALL 13.2mm  
1 x AAAC/6201 PEARL18.8mm

2450-STR-9907 (9908, 9909) TO  
2450-STR-9911 (9912, 9913)  
2 x ACSR/AC VOLLEYBALL 13.2mm

2450-STR-9911 (9912, 9913) TO  
1031-STR-9234  
2 x SC/GZ 9.8mm

1031-STR-9324 TO 1463-STR-H014  
2 x SC/AC 9.8mm

DISPLAYED @ EDT 20°C

**3. REFERENCE SYSTEM:**

Hz - GDA94 MGAz56  
Vt - AHD

**4. SOURCE DATA**

REPRODUCED PLAN AND PROFILE BASED  
ON DRAWING 206504 AND  
ALS & AS-BUILT MODELLING PROVIDED BY  
NETWORK MAPPING (REF: PP17014501) - AUGUST 2017  
REFER TO OR1598  
MEANDU MINE DEVIATION GROUND SOURCE DATA  
SUPPLIED BY MEANDU MINE 2m CONTOURS CIRCA  
APPROXIMATELY JUNE 2004

**5. CLEARANCE/NOTES:**

7.6m GROUND CLEARANCE LINE  
AND SIDE PROFILES DISPLAYED @7.1m  
LHS (BLUE DASH) RHS (RED DASH-SHORT DASH)  
(INCLUDES 100mm ERROR TOLERANCE)

**6. REFERENCE FILES:**

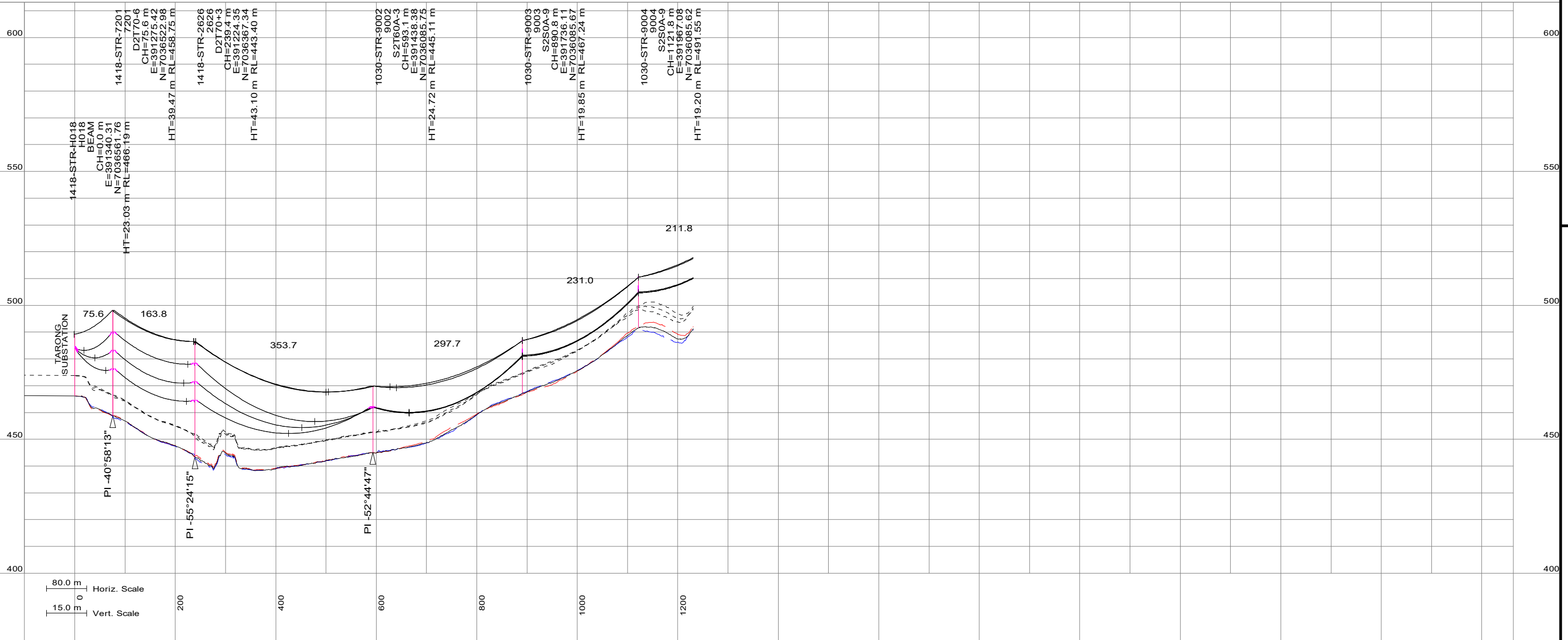
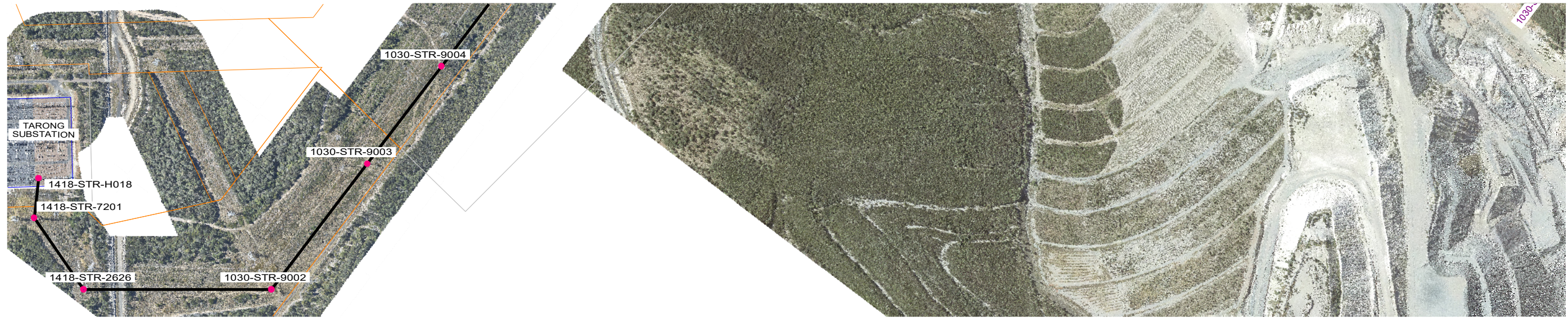
CIVIL SCHEDULE 159157-121  
CIVIL SCHEDULE (HISTORICAL): 206431, 157314-101,  
153843-101  
MEANDU MINE DEVIATION PLAN AND PROFILE 159157-103  
MEANDU MINE DEVIATION CIVIL SCHEDULE 159157-123  
PLAN AND PROFILE (OR.01598): 153843-001  
PHASING DIAGRAM: 119081-001

POWERLINK QUEENSLAND IS THE TRADING NAME OF THE QUEENSLAND ELECTRICITY TRANSMISSION CORPORATION LIMITED ACN 078 849 233

283x394



|   |  |             |             |                             |                          |   |                        |            |                 |           |  |  |
|---|--|-------------|-------------|-----------------------------|--------------------------|---|------------------------|------------|-----------------|-----------|--|--|
| ORIGINAL ISSUE<br>DATE: 12/10/2022<br><br>A |  | DRAWN       | C.JOHNSTONE | DESIGN CHECK                | S.HUTSON                 | <br><br><b>TARONG TO MIDDLE RIDGE<br/>275kV SINGLE CIRCUIT TRANSMISSION LINE<br/>PLAN AND PROFILE</b> | LOCATION               | CONT/ORDER | PROJECT         | DRG CLASS |  |  |
|   |  | CHECKED     | C.TENCATE   | APP'D ELECTRICAL<br>RPEQ No | E.VAN DER DRAAI<br>15331 |   | 831, 831R              | PP22000501 | CU.00273        | A0        |  |  |
|   |  | DESIGNED    | G.GRIMSTON  | APP'D STRUCTURAL<br>RPEQ No | A.SHAHINUZZAMAN<br>5742  |   | <b>A3-H-159157-101</b> |            | PAGE<br>1 of 45 |           |  |  |
|   |  | ORIGIN      | PSD         |                             |                          |   |                        |            |                 |           |  |  |
|   |  | CIRCULATION | -           |                             |                          |   |                        |            |                 |           |  |  |



283X394 POWERLINK QUEENSLAND IS THE TRADING NAME OF THE QUEENSLAND ELECTRICITY TRANSMISSION CORPORATION LIMITED ACN 078 849 233



|   |                  |
|---|------------------|
| A | ORIGINAL ISSUE   |
|   | DATE: 12/10/2022 |

|             |              |                          |                        |
|-------------|--------------|--------------------------|------------------------|
| DRAWN       | C. JOHNSTONE | DESIGN CHECK             | S. HUTSON              |
| CHECKED     | C. TENCATE   | APP'D ELECTRICAL RPEQ No | E. VAN DER DRAAI 15331 |
| DESIGNED    | G. GRIMSTON  | APP'D STRUCTURAL RPEQ No | A. SHAHINUZZAMAN 5742  |
| ORIGIN      | PSD          |                          |                        |
| CIRCULATION | -            |                          |                        |

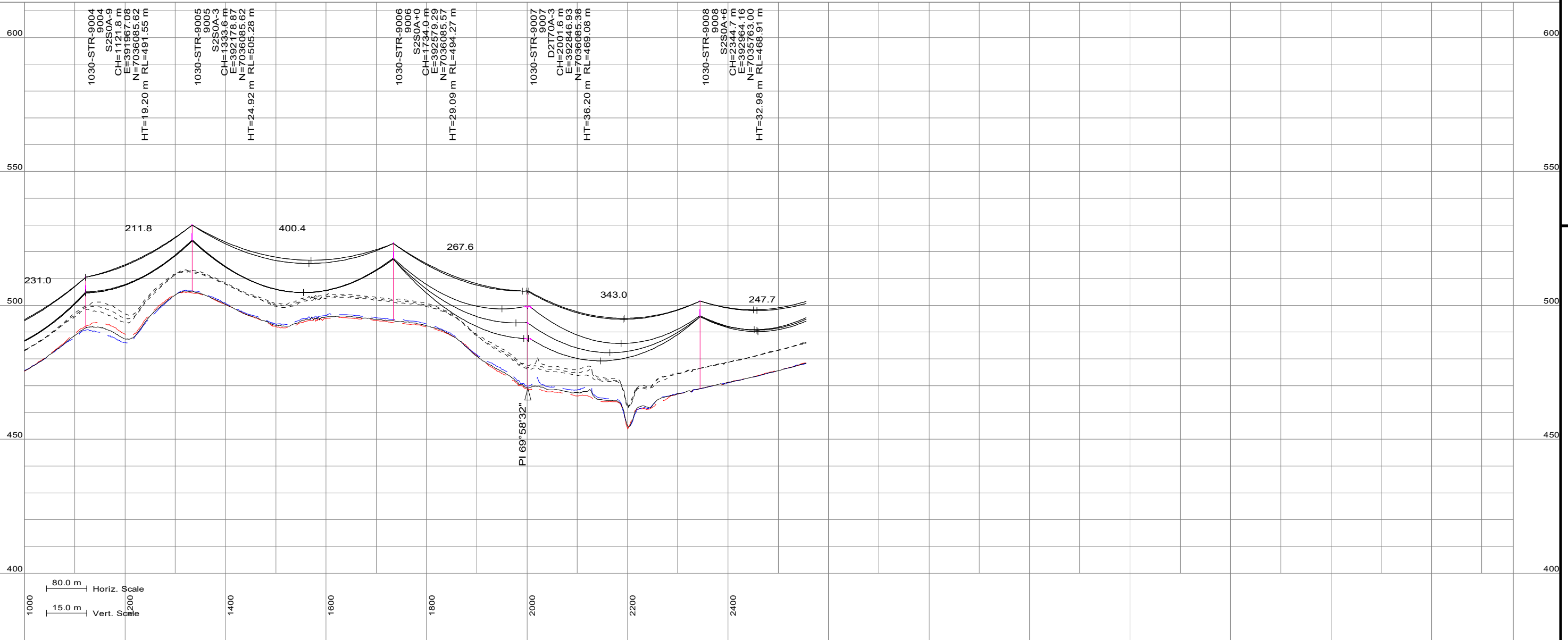
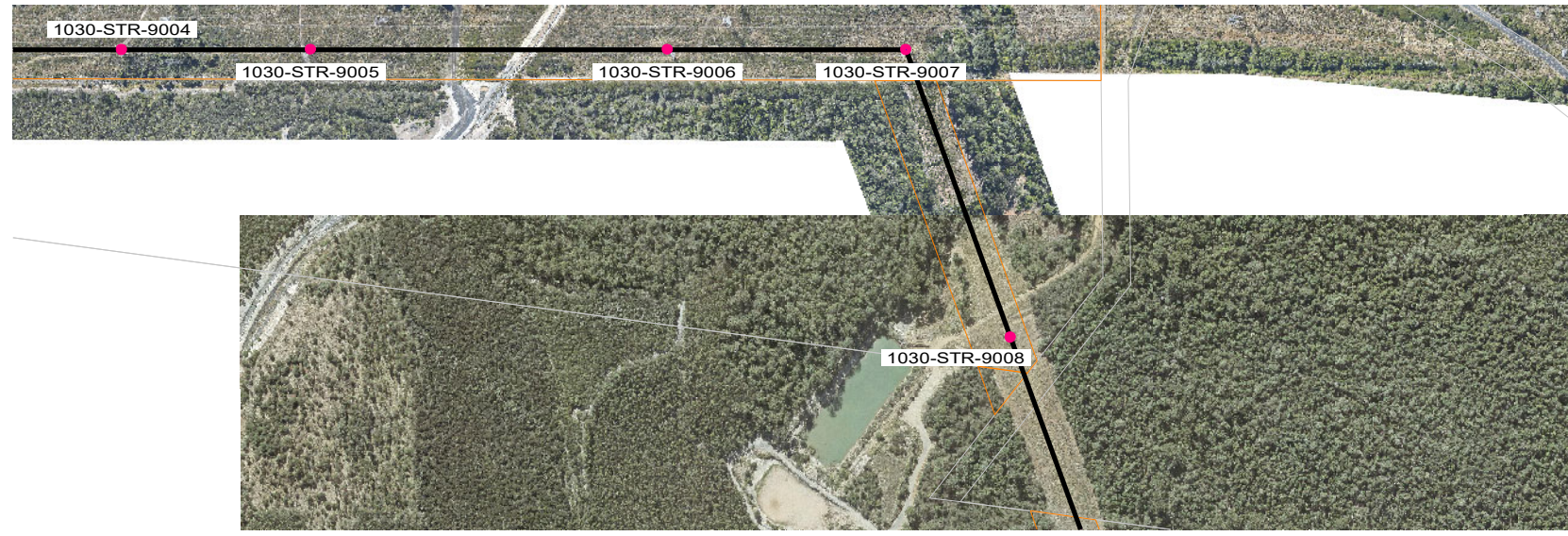
*Powerlink*  
QUEENSLAND

**TARONG TO MIDDLE RIDGE  
275KV SINGLE CIRCUIT TRANSMISSION LINE  
PLAN AND PROFILE**

|                        |            |          |                 |
|------------------------|------------|----------|-----------------|
| LOCATION               | CONT/ORDER | PROJECT  | DRG CLASS       |
| 831, 831R              | PP22000501 | CU.00273 | A0              |
| <b>A3-H-159157-101</b> |            |          | PAGE<br>2 of 45 |
| A                      |            |          |                 |



283X394 POWERLINK QUEENSLAND IS THE TRADING NAME OF THE QUEENSLAND ELECTRICITY TRANSMISSION CORPORATION LIMITED ACN 078 849 233

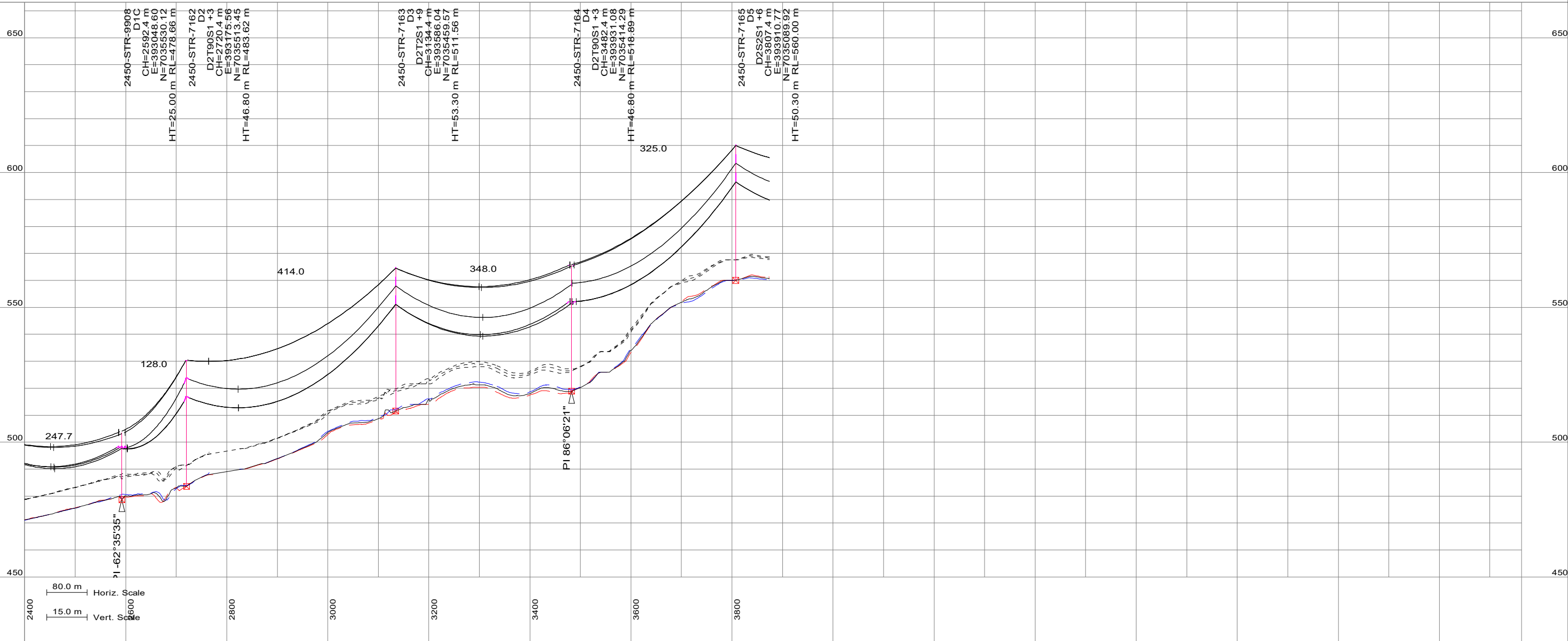
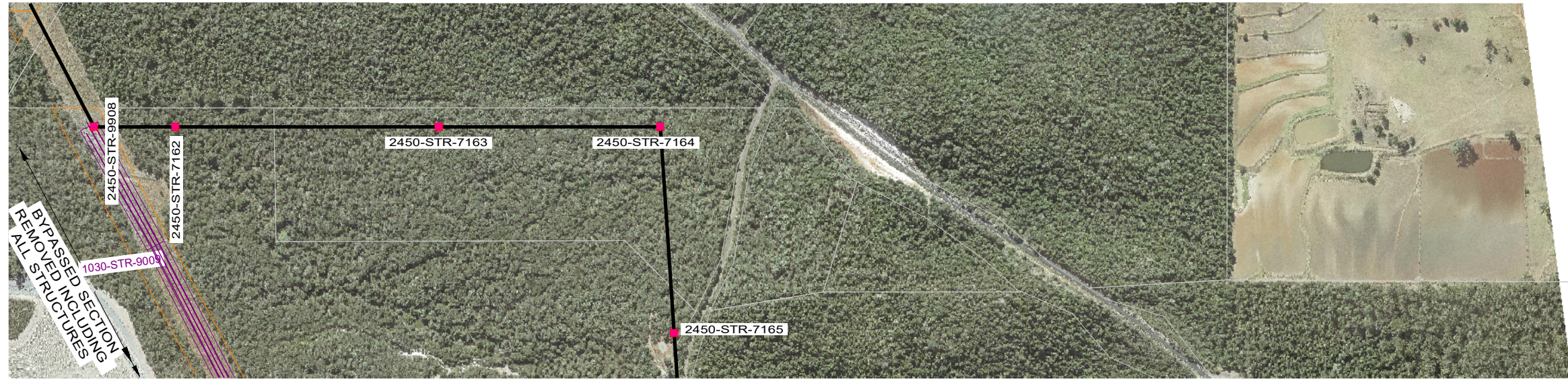


|                                    |             |              |                             |                           |
|------------------------------------|-------------|--------------|-----------------------------|---------------------------|
| ORIGINAL ISSUE<br>DATE: 12/10/2022 | DRAWN       | C. JOHNSTONE | DESIGN CHECK                | S. HUTSON                 |
|                                    | CHECKED     | C. TENCATE   | APP'D ELECTRICAL<br>RPEQ No | E. VAN DER DRAAI<br>15331 |
| A                                  | DESIGNED    | G. GRIMSTON  | APP'D STRUCTURAL<br>RPEQ No | A. SHAHINUZZAMAN<br>5742  |
|                                    | ORIGIN      | PSD          |                             |                           |
|                                    | CIRCULATION | -            |                             |                           |

|  |  |           |            |                 |           |
|--|--|-----------|------------|-----------------|-----------|
|  |  | LOCATION  | CONT/ORDER | PROJECT         | DRG CLASS |
|  |  | 831, 831R | PP22000501 | CU.00273        | A0        |
| TARONG TO MIDDLE RIDGE<br>275KV SINGLE CIRCUIT TRANSMISSION LINE<br>PLAN AND PROFILE |  |           |            | PAGE            |           |
|  |  |           |            | A3-H-159157-101 |           |
| A  |  |           |            |                 |           |

|                                    |  |
|------------------------------------|--|
| ORIGINAL ISSUE<br>DATE: 12/10/2022 |  |
| A                                  |  |

|                                    |  |
|------------------------------------|--|
| ORIGINAL ISSUE<br>DATE: 12/10/2022 |  |
| A                                  |  |



283X394 POWERLINK QUEENSLAND IS THE TRADING NAME OF THE QUEENSLAND ELECTRICITY TRANSMISSION CORPORATION LIMITED ACN 078 849 233

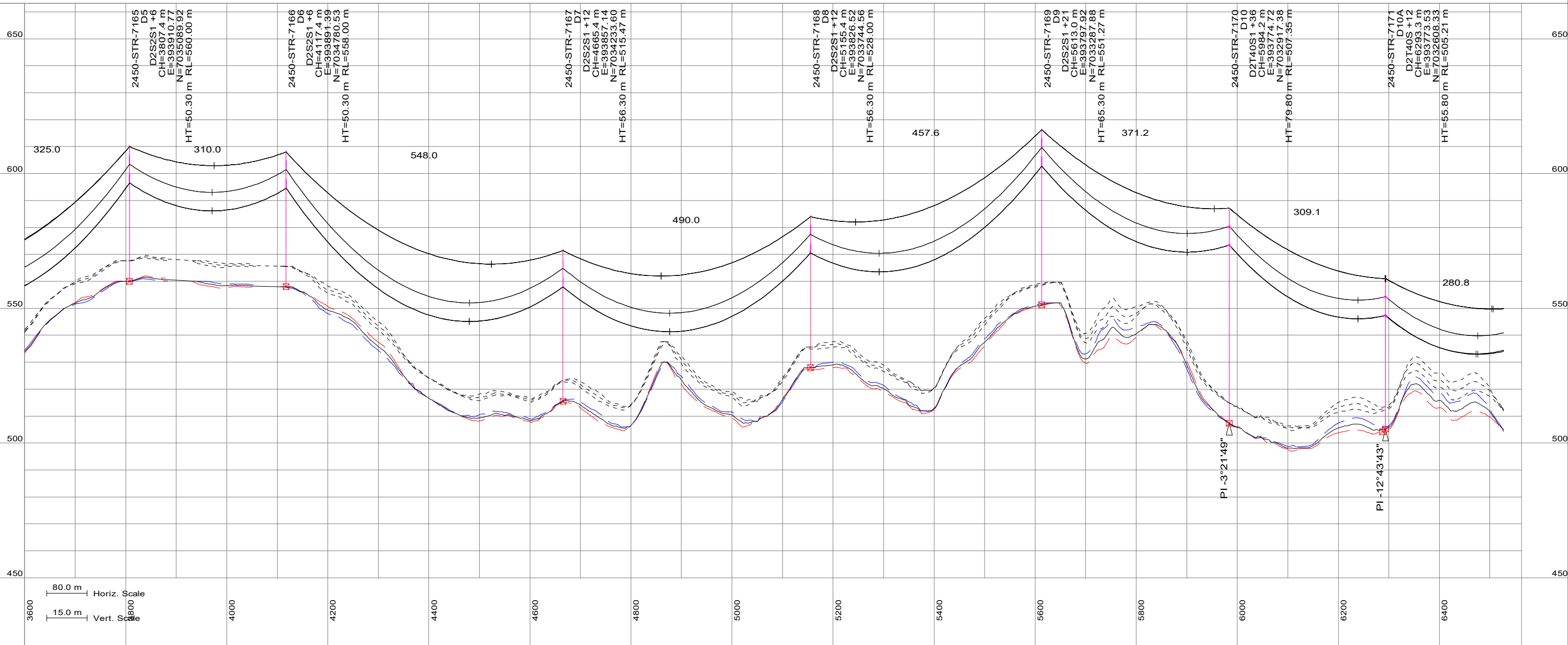
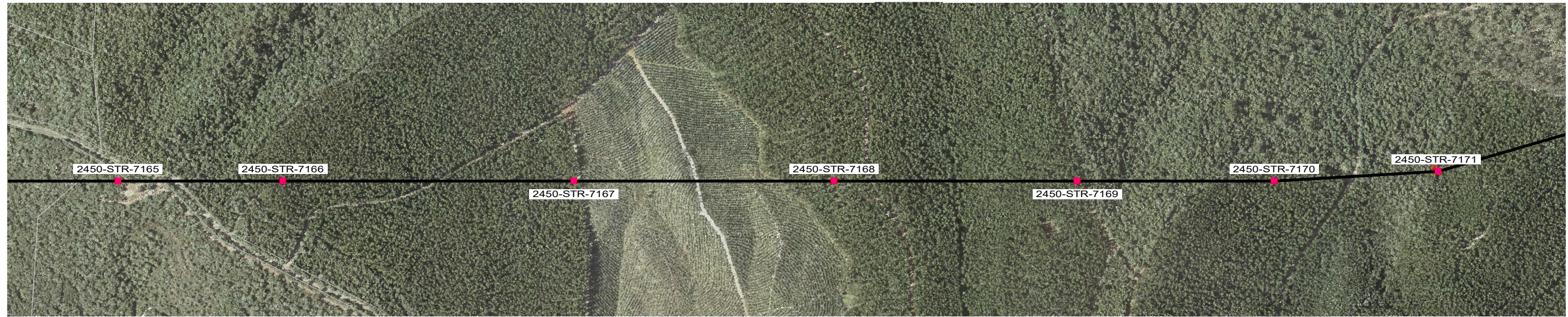


|                                    |             |              |                             |                           |
|------------------------------------|-------------|--------------|-----------------------------|---------------------------|
| ORIGINAL ISSUE<br>DATE: 12/10/2022 | DRAWN       | C. JOHNSTONE | DESIGN CHECK                | S. HUTSON                 |
|                                    | CHECKED     | C. TENCATE   | APP'D ELECTRICAL<br>RPEQ No | E. VAN DER DRAAI<br>15331 |
| A                                  | DESIGNED    | G. GRIMSTON  | APP'D STRUCTURAL<br>RPEQ No | A. SHAHINUZZAMAN<br>5742  |
|                                    | ORIGIN      | PSD          |                             |                           |
|                                    | CIRCULATION | -            |                             |                           |



**TARONG TO MIDDLE RIDGE  
275KV SINGLE CIRCUIT TRANSMISSION LINE  
PLAN AND PROFILE**

|                        |            |          |                 |
|------------------------|------------|----------|-----------------|
| LOCATION               | CONT/ORDER | PROJECT  | DRG CLASS       |
| 831, 831R              | PP22000501 | CU.00273 | A0              |
| <b>A3-H-159157-101</b> |            |          | PAGE<br>4 of 45 |
| A                      |            |          |                 |



283X394 POWERLINK QUEENSLAND IS THE TRADING NAME OF THE QUEENSLAND ELECTRICITY TRANSMISSION CORPORATION LIMITED ACN 078 849 233



|                                    |             |              |                             |                           |
|------------------------------------|-------------|--------------|-----------------------------|---------------------------|
| ORIGINAL ISSUE<br>DATE: 12/10/2022 | DRAWN       | C. JOHNSTONE | DESIGN CHECK                | S. HUTSON                 |
|                                    | CHECKED     | C. TENCATE   | APP'D ELECTRICAL<br>RPEQ No | E. VAN DER DRAAI<br>15331 |
| A                                  | DESIGNED    | G. GRIMSTON  | APP'D STRUCTURAL<br>RPEQ No | A. SHAHINUZZAMAN<br>5742  |
|                                    | ORIGIN      | PSD          |                             |                           |
|                                    | CIRCULATION | -            |                             |                           |

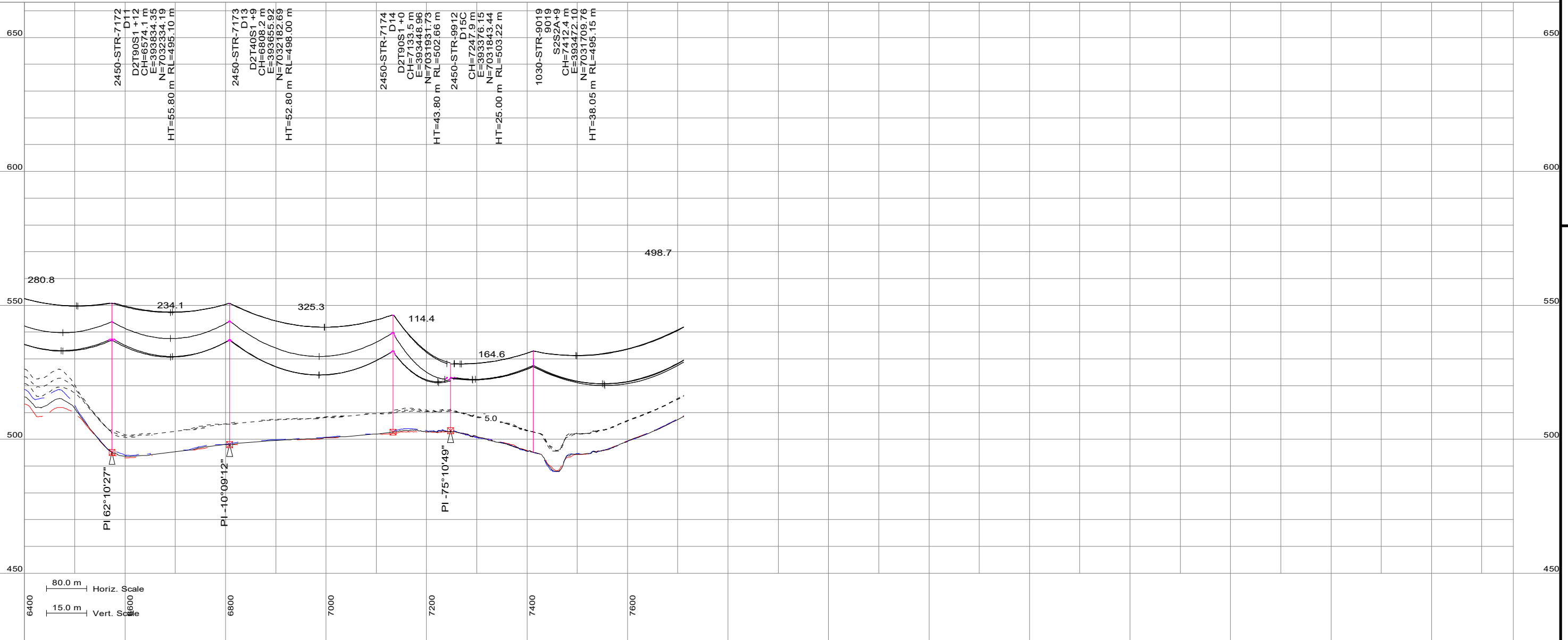
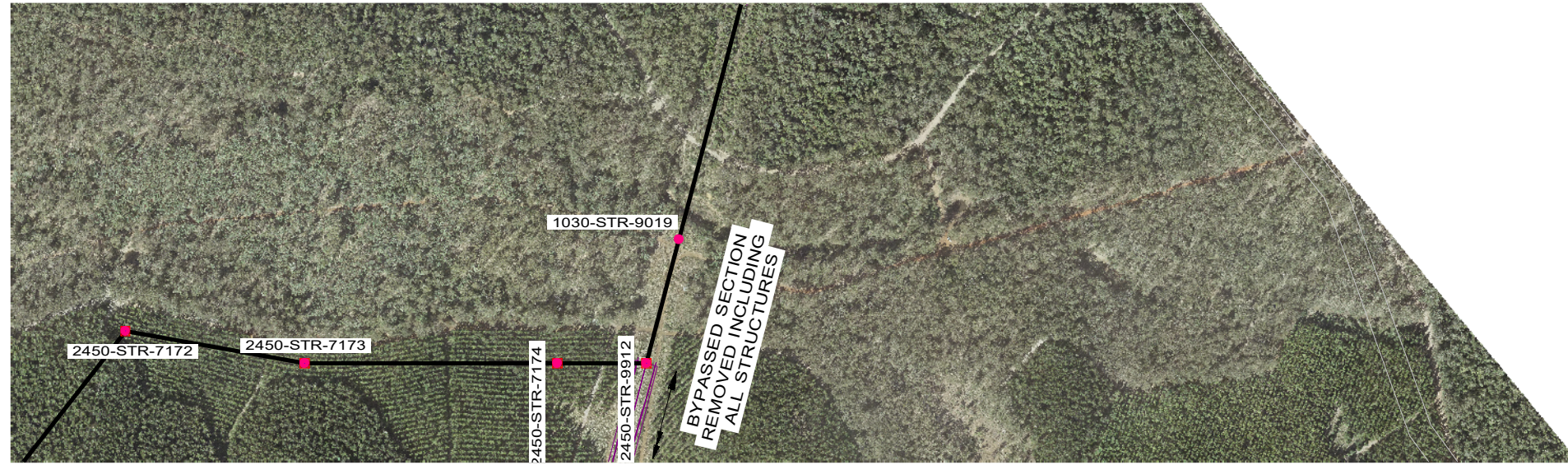
|   |  |  |  |
|---|--|--|--|
| <b>Powerlink</b><br>QUEENSLAND  |  |  |  |
| <b>TARONG TO MIDDLE RIDGE<br/>275KV SINGLE CIRCUIT TRANSMISSION LINE<br/>PLAN AND PROFILE</b> |  |  |  |

|                        |            |          |                 |
|------------------------|------------|----------|-----------------|
| LOCATION               | CONT/ORDER | PROJECT  | DRG CLASS       |
| 831, 831R              | PP22000501 | CU.00273 | A0              |
| <b>A3-H-159157-101</b> |            |          | PAGE<br>5 of 45 |
| A                      |            |          |                 |

|                        |  |  |  |
|------------------------|--|--|--|
| <b>A3-H-159157-101</b> |  |  |  |
| A                      |  |  |  |



283X394 POWERLINK QUEENSLAND IS THE TRADING NAME OF THE QUEENSLAND ELECTRICITY TRANSMISSION CORPORATION LIMITED ACN 078 849 233



|   |             |              |                          |                        |  |  |            |          |           |
|---|-------------|--------------|--------------------------|------------------------|--|--|------------|----------|-----------|
| ORIGINAL ISSUE<br>DATE: 12/10/2022<br>A | DRAWN       | C. JOHNSTONE | DESIGN CHECK             | S. HUTSON              |  | LOCATION   | CONT/ORDER | PROJECT  | DRG CLASS |
|   | CHECKED     | C. TENCATE   | APP'D ELECTRICAL RPEQ No | E. VAN DER DRAAI 15331 |  | 831, 831R  | PP22000501 | CU.00273 | A0        |
|   | DESIGNED    | G. GRIMSTON  | APP'D STRUCTURAL RPEQ No | A. SHAHINUZZAMAN 5742  |  | TARONG TO MIDDLE RIDGE<br>275KV SINGLE CIRCUIT TRANSMISSION LINE<br>PLAN AND PROFILE |            |          |           |
|   | ORIGIN      | PSD          |                          |                        |  |  |            |          |           |
|   | CIRCULATION | -            |                          |                        |  | A  |            |          |           |