

Borumba Pumped Hydro Transmission Connections Project

About the project

Queensland Hydro's proposed Borumba Pumped Hydro Energy Storage Facility is a renewable generation project capable of dispatching 2,000MW of stored energy for up to 24 hours. When fully operational, it will have the capacity to power up to two million Queensland homes. The project site is located at Lake Borumba near Imbil. For further information on the project, visit- qldhydro.com.au/borumba.

Project overview

- Powerlink has been engaged by Queensland Hydro to develop transmission line corridors to connect the proposed Borumba Pumped Hydro Project to the electricity grid.
- Early engagement began in December 2021 and in April 2023, the draft corridor selection reports were released.
- After carefully considering community feedback and further assessment of social, environmental and economic factors, Powerlink identified 1km-wide final corridors for Borumba to Halys in September 2023 and Borumba to Woolooga in November 2023. (Refer to the project timeline on page 3 for more details).
- We are now working directly with landholders within the 1km-wide final corridors to further refine these down to 70m-wide easement alignments.
- Powerlink vehicles and team members will be in the community as they work with contractors to facilitate on-ground environmental, cultural heritage, technical and ecological assessments.
- Following additional project investigations to determine the best route for the 70m-wide easement alignments, we will prepare technical environmental assessment reports to support the statutory environmental approvals.
- Powerlink will continue to seek feedback and input from landholders, Traditional Owner groups, community members and other stakeholders throughout these processes.

Powerlink acknowledges the Traditional Owners and their custodianship of the lands and waters of Queensland and in particular, the lands on which we operate. We pay our respect to their Ancestors, Elders and knowledge holders and recognise their deep history and ongoing connection to Country.

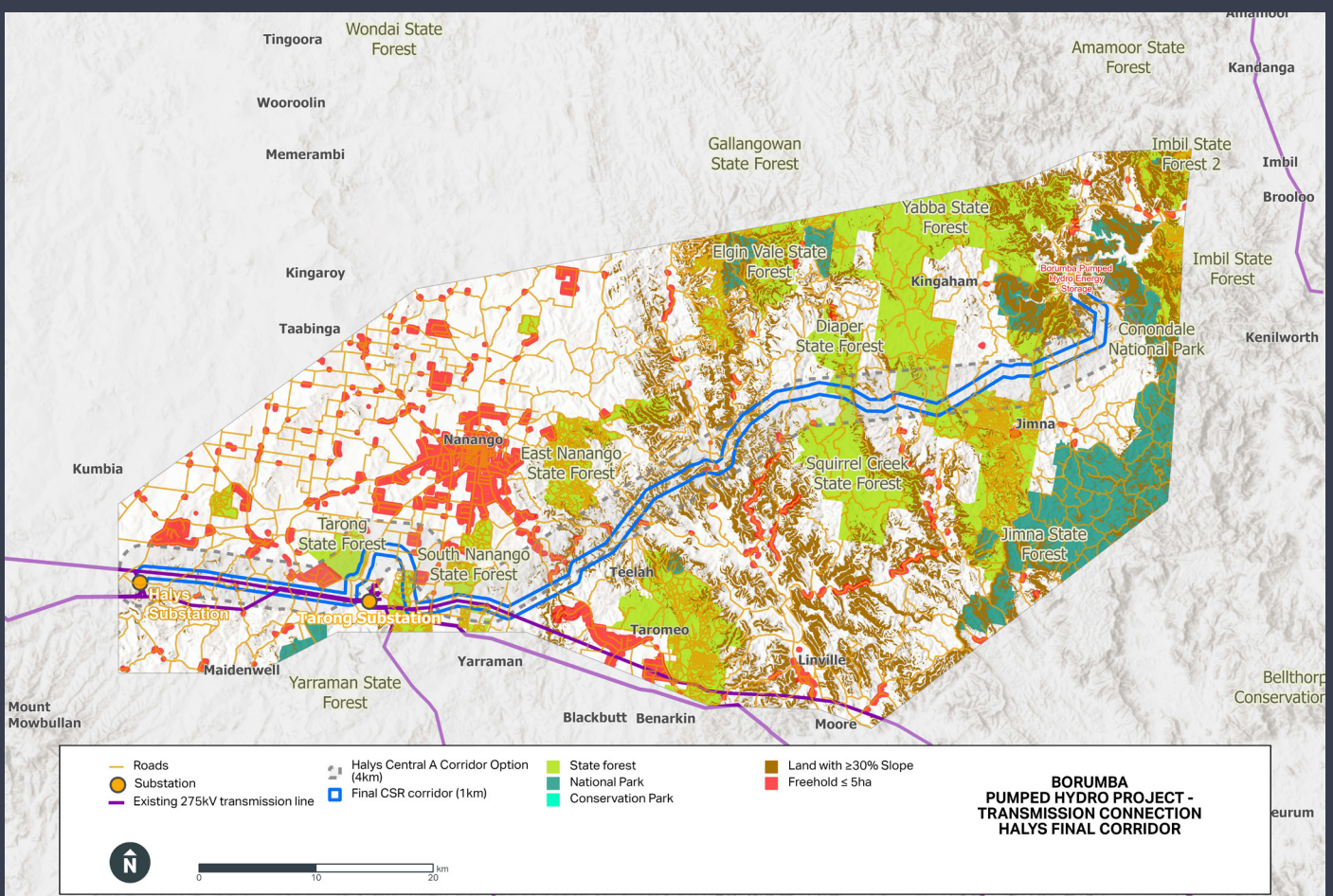
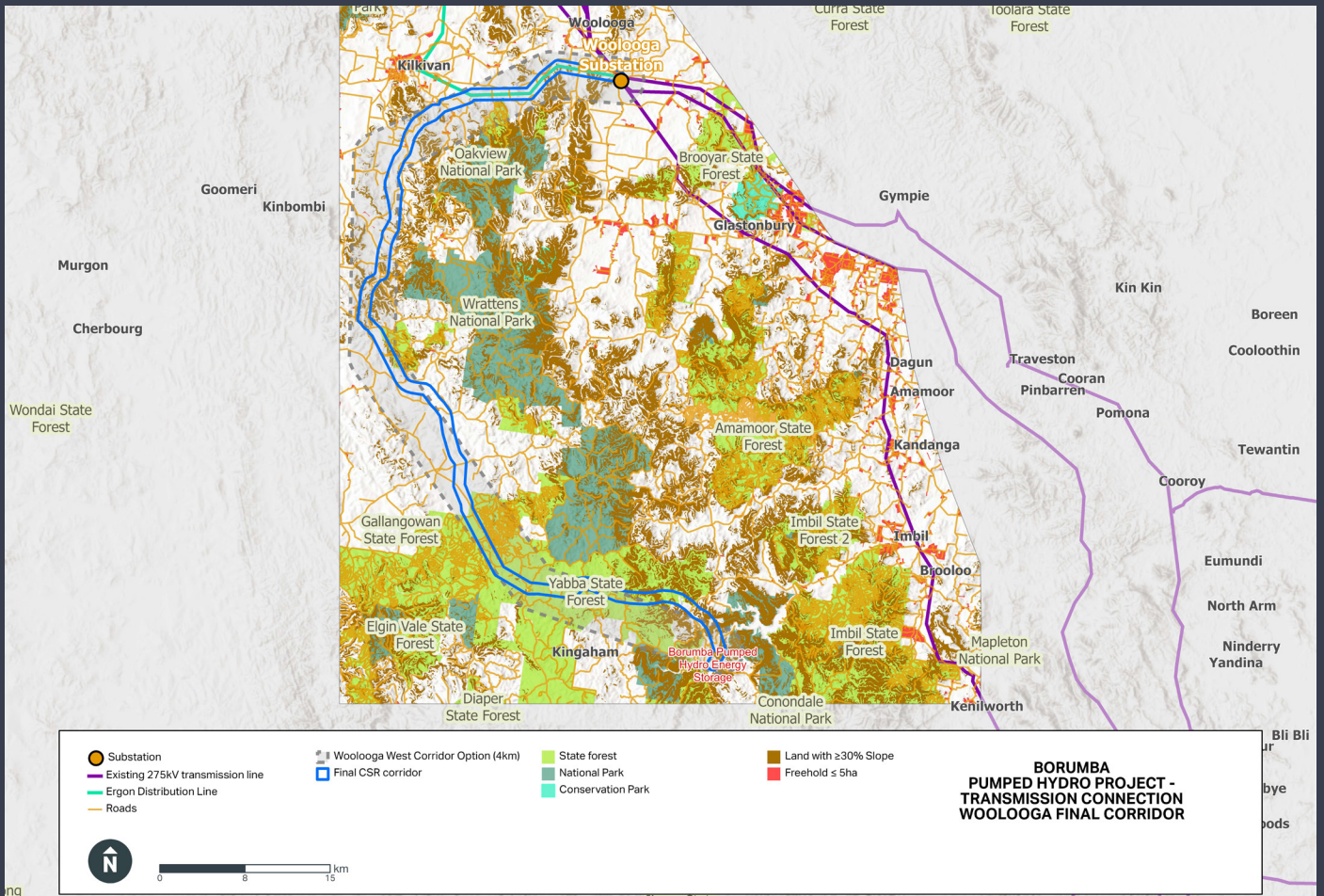


Freecall 1800 635 369
powerlink.com.au/borumbatransmission



SAFE FOR LIFE
Everyone. Everywhere. Everyday.

Final corridor maps



Project timeline

- **December 2021**
Early engagement
- **July 2022 - October 2022**
Introduction to investigation area
- **November 2022 - April 2023**
Engagement on transmission corridor options
- **April 2023**
Release of recommended transmission corridors
- **August - October 2023**
Engagement on recommended transmission corridors
- **September 2023**
Release final corridor for Borumba to Halys transmission corridor and extended engagement on deviation to Borumba to Woolooga corridor
- **November 2023**
Release of final corridor for Borumba to Woolooga transmission corridor
- **December 2023 - March 2025**
Landholder engagement on easement alignment
- **Late 2024**
Consultation to progress Federal Government environmental approvals under the *Environmental Protection and Biodiversity Conservation (EPBC) Act 1999*
- **Q1 2025**
Consultation to progress State Government planning approvals as per the Ministerial Infrastructure Designation process under the *Planning Act 2016*
- **2026 - 2029**
Transmission construction

Environmental and geotechnical field studies

With the release of the final transmission line corridors, a series of important surveys and assessments are required to help refine and identify potential easement alignments within the final corridors.

They will help inform the transmission line's location and design, including tower placements and spanning between the towers.

A key focus of the surveys will be examining 'Matters of National and State Environmental Significance' which will be comprehensively assessed through the environmental and planning approvals for the project.

These assessments include:

- vegetation surveys to identify the types and condition of native plants and habitats
- wildlife surveys to record the presence and activity of native animals, such as birds, bats, reptiles, amphibians and mammals

Powerlink's project team is working closely with landholders to access and coordinate the timings of these field studies along the Halys and Woolooga corridors in April and May 2024.

Future environmental surveys planned for late 2024 and early 2025 will continue to focus on vegetation, wildlife, protected plants and biosecurity matters.

Managing biosecurity and weeds

We recognise the effective prevention and management of identified weeds, pathogens and pests is important to landholders. This is highlighted in our Land Access Protocol- powerlink.com.au/brochures/land-access-protocol.

Stringent measures have been put in place to manage and mitigate biosecurity risks, including:

- vehicle wash down procedures for vehicles accessing properties to complete survey and assessment work
- implementing weed monitoring during on-site activities to identify new occurrences of weeds.

We appreciate the ongoing cooperation from landholders in working with us to identify relevant biosecurity risks to effectively manage and mitigate them.

For more information on our approach to biosecurity please visit- powerlink.com.au/biosecurity.

Telecommunications program to boost mobile and internet services

Powerlink and our subsidiary Queensland Capacity Network (QCN) launched the SuperGrid Telecommunications Program in 2023 to provide high-speed internet and mobile phone coverage to regional areas hosting transmission infrastructure.

This includes a \$500,000 commitment to complete investigation works to upgrade internet and mobile blackspots across the Gympie and South Burnett regions.

You can find more information about the program and its roll-out on the Powerlink website - powerlink.com.au/brochures/supergrid-telecommunications-program.

Support

Powerlink is offering support to landholders and community members through a professional counselling service (Rural Health Connect).

This is an independent and confidential provider.

To access this service, please call 0493 432 144 or visit - ruralhealthconnect.com.au/employee-assistance-program, select EAP from the services menu and enter the EAP Program Code: 'Landholder Assist'.

Next steps

- Working in conjunction with our landholders, Powerlink will commence on-ground technical, cultural heritage, environmental and ecological assessments and surveys on some properties within the final corridor.
- Development of an Environmental Assessment Report (EAR) examining the potential environmental, social and economic impacts of the proposed infrastructure and the actions required to manage and mitigate these impacts.
- Formal consultation to gather feedback on the EAR will take place during the first half of 2025.
- Ongoing engagement with landholders, Traditional Owners, the community and other stakeholders as the project progresses.

About Powerlink Queensland

Powerlink is a Government Owned Corporation that owns, develops, operates and maintains the transmission network in Queensland.

We connect Queenslanders to a world-class energy future, providing electricity to more than five million Queenslanders and 253,000 businesses.

We are also responsible for connecting large-scale renewable energy developments, including wind and solar, and providing electricity to large industrial customers in the rail, mining and LNG sectors.

Freecall 1800 635 369
powerlink.com.au/borumbatransmission



Further information

Scan the QR code to visit our project webpage and subscribe to keep up to date with project activities.



Or contact:

Borumba to Halys project team
07 3898 4911

Borumba to Woolooga project team
07 3898 4988



SAFE FOR LIFE
Everyone. Everywhere. Everyday.