

# Wandoan South to Eurombah Transmission Network Project Yuleba North to Clifford Creek and Yuleba North to Dinoun South Transmission Lines Project



PROJECT NEWSLETTER  
APRIL 2013

This newsletter provides information about the Environmental Impact Assessment currently under way for two proposed transmission lines west of Wandoan.

## CONTENTS

Draft EIS available for comment	2
Providing comment	2
Community Information Sessions	2
About the Draft EIS	3
Project timetable	3
Next steps	3
Project maps	4
Update on the broader project	5
Community Environmental Program	5
Frequently asked questions	6
Project contact details	6

## Project snapshot

- Powerlink Queensland has been requested by Australia Pacific LNG Pty Limited (APLNG) to establish direct connections into the high voltage transmission network to supply power to its future gas processing facilities in the area west of Wandoan. The project has been divided into three sections to ensure landowners and other important stakeholders receive information, and can provide comment on, matters that are most relevant to them.
- Section two of the proposed network extension involves the development of two separate 132kV transmission lines from the proposed Yuleba North Substation (5km east of the Yuleba Taroom Road, about 52km north of Yuleba).
- This includes a transmission line about 20km in length to the proposed Clifford Creek Substation (on land owned by APLNG about 36km north of Yuleba) and a 15km transmission line to a substation proposed at Dinoun South (about 50km north of Yuleba).
- Since April 2012, the project team including Powerlink staff and the project's environmental specialist GHD have been undertaking a comprehensive Environmental Impact Assessment (EIA). This has involved engaging individually with landowners potentially affected by the proposed transmission lines, and undertaking field surveys and research.
- Using the information gathered to date, GHD has developed the Draft Environmental Impact Statement (EIS) for the proposed transmission lines, which is now available for public comment.
- The Draft EIS assesses the social, environmental and economic impacts of the proposed transmission lines, outlines the actions Powerlink will take to manage and/or mitigate those impacts, and considers these factors together to identify a Study Alignment for each transmission line which on balance, has the lowest overall impact.

*Public comment is invited on the Draft EIS for the proposed transmission lines. Further details about the Draft EIS are on page 2, including advice about how to make a submission.*

## Draft EIS available for comment

- Powerlink is committed to working closely with affected landowners and stakeholders to gain their input and minimise any inconvenience or impact.

As part of this commitment, the Draft EIS for the proposed Yuleba North to Clifford Creek and Yuleba North to Dinoun South transmission lines is now available for public comment.

For your convenience, a copy of the report can be viewed locally at Council libraries in Wandoan and Roma from Friday, 26 April 2013.

A copy of the report can also be obtained by:

- Visiting GHD's website [www.ghd.com/global/projects/cck-and-dis-transmission-lines](http://www.ghd.com/global/projects/cck-and-dis-transmission-lines)
- Visiting Powerlink's website [www.powerlink.com.au](http://www.powerlink.com.au) – go to 'Projects/Southern/Wandoan South to Eurombah/Section 2'
- Emailing GHD at [amanda.smedley@ghd.com](mailto:amanda.smedley@ghd.com)
- Phoning Powerlink on FREECALL 1800 635 369 (during business hours).

Copies of the report will also be provided to landowners directly-affected by the proposed transmission lines, government agencies and other stakeholders for comment.

## Providing comment

Written submissions on the Draft EIS must be received by GHD **before 5pm on Friday, 31 May 2013** and should be addressed to:

Yuleba North to Clifford Creek and Yuleba North to Dinoun South Transmission Lines Project

Ms Amanda Smedley  
GHD Pty Ltd  
PO Box 819  
Cairns QLD 4870  
Fax: (07) 4044 2288  
Email: [amanda.smedley@ghd.com](mailto:amanda.smedley@ghd.com)

Persons or groups with special communication needs who wish to comment on the report should email GHD at [amanda.smedley@ghd.com](mailto:amanda.smedley@ghd.com) or contact Powerlink on FREECALL 1800 635 369 (during business hours) to make alternative arrangements.

***For further information on how to make a submission, please see the enclosed fact sheet.***

## Community Information Sessions

Representatives from Powerlink and GHD will be available at upcoming community information sessions to discuss the project and the Draft EIS. Interested members of the community are welcome to drop-in and speak with project representatives at the following sessions:

**Roma:** Tuesday, 14 May from 3pm to 8pm, Roma Bungil Cultural Community Centre, Bungil Street, Roma

**Yuleba:** Wednesday, 15 May from 8am to 1pm, Yuleba Maranoa Regional Council Office, cnr Stephenson & Creek Streets, Yuleba

**Wandoan:** Wednesday, 15 May from 3pm to 8pm, Wandoan Community Cultural Centre, Henderson Road, Wandoan

If you are unable to attend or would like further information, please contact Powerlink on FREECALL 1800 635 369 (during business hours).

## About the Draft EIS

- *The Draft EIS looks at the potential impact of the proposed transmission lines, and considers the environment, as well as community and economic considerations.*

It is a comprehensive document which provides detailed information about:

- Project need and alternatives considered
- A description of the project
- A review of the planning laws and the approvals which may be required
- Social considerations, including any potential impact to current and future land use e.g. farming operations
- Environmental considerations, including any potential impact on flora and fauna, waterways, vegetation, soils etc
- Visual amenity
- Electric and Magnetic Fields
- Cultural Heritage
- The consultation process.

The Draft EIS also includes a Draft Environmental Management Plan (EMP) which outlines the actions Powerlink will take to manage and/or mitigate any potential impacts during the design, construction or maintenance of the proposed transmission lines.

The main map on page 4 shows the Study Alignment proposed for each transmission line in the Draft EIS.

## Next steps

- *Once the Draft EIS comment period has closed on Friday, 31 May 2013, GHD will assess all submissions received.*

As part of GHD's assessment of the submissions received, they will recommend whether any additional studies, consultation or changes are required to complete the EIS report for the proposed transmission lines. All comments received and changes made will be included in the Final EIS. Submitters will receive an individual response to their submissions.

No decision about the final location of the proposed transmission lines will be made until comprehensive environmental investigations and related consultation activities have been completed.

The Final EIS will then be produced and the alignment for the transmission lines finalised. The process to resume easements (and obtain property rights to use land) for the transmission lines and the necessary planning approval process (Ministerial designation) can then commence.

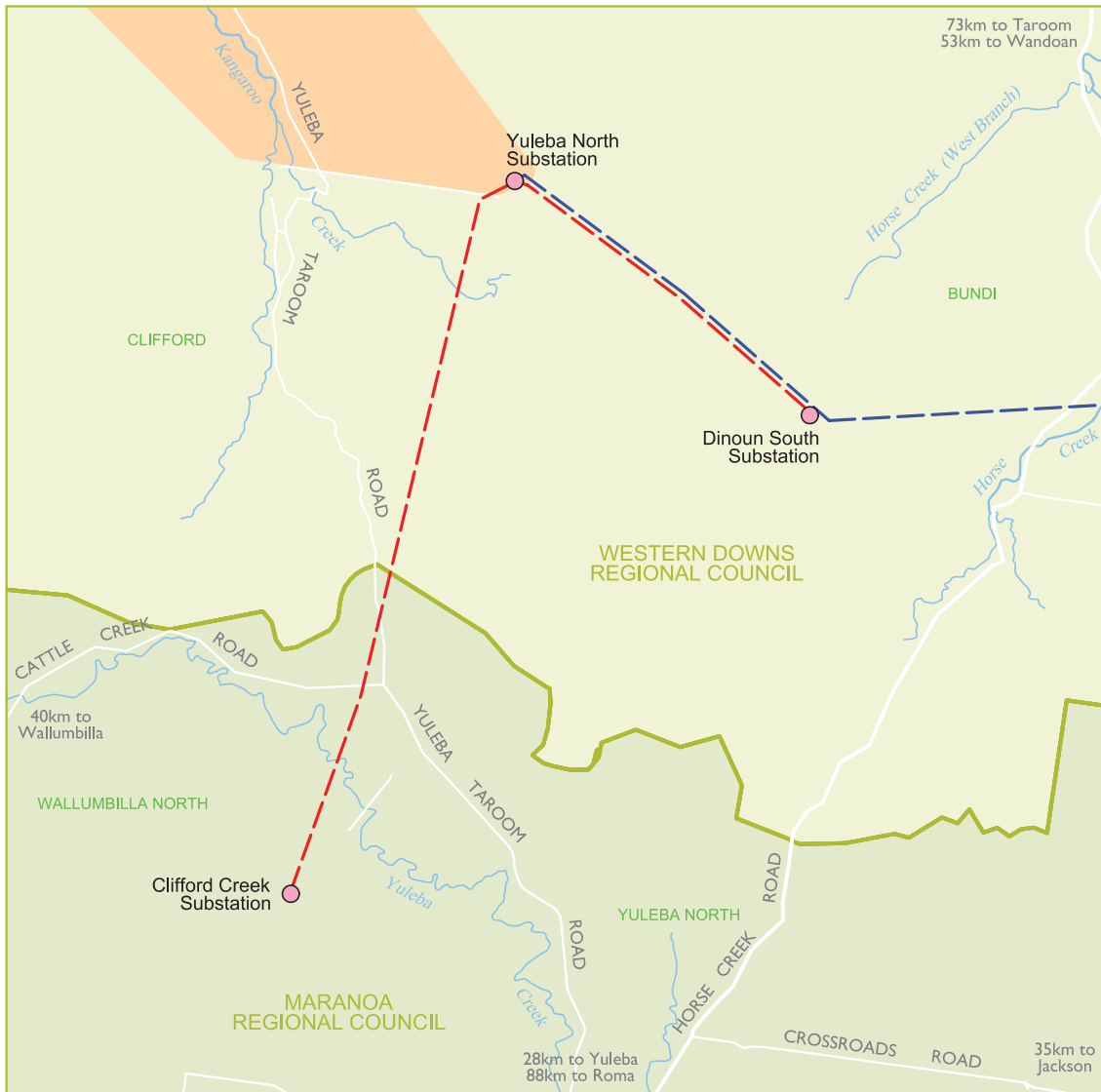
At this time, Powerlink will write to directly-affected landowners and stakeholders to advise of its intention to seek Ministerial designation and will invite submissions on its proposal.

The process to assess and pay compensation to directly-affected landowners can occur following resumption of the transmission line easements.

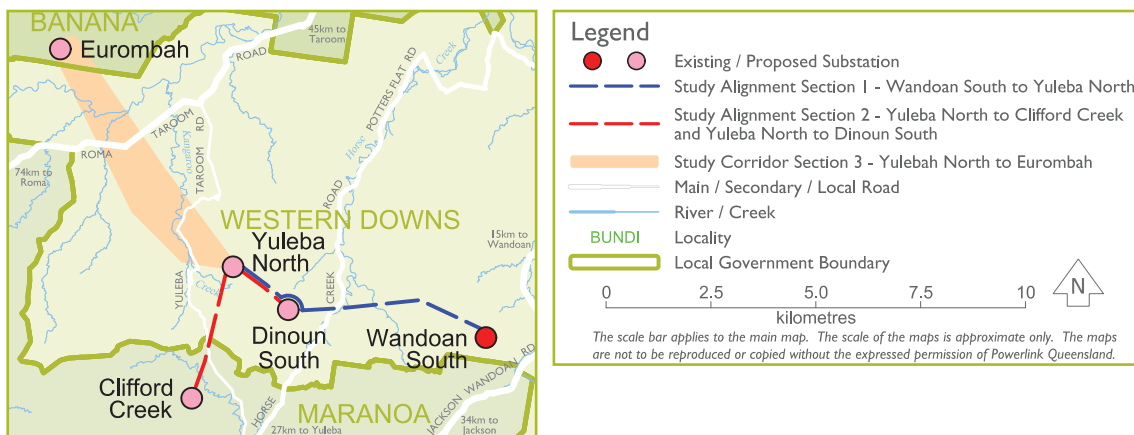
## Project timetable

Activity	Expected timing
Release Draft EIS for public comment	April 2013
Finalise EIS	Second half 2013
Seek planning approval through Ministerial designation	Second half 2013
Construction expected to commence	First half 2014
Transmission lines expected to be completed	First half 2015

## Study Alignment – Yuleba North to Clifford Creek and Yuleba North to Dinoun South transmission lines



## Broader project – Wandoan South to Eurombah Transmission Network Project



## Update on the broader project

- *Powerlink has commenced work to identify and ultimately acquire easements and land to extend its transmission network west of Wandoan involving 100km of transmission line and four substations.*

The Wandoan South to Eurombah Transmission Network Project was initiated in April 2012 at the request of APLNG to provide direct connections into the high voltage transmission network to supply power to its future gas processing facilities in the Wandoan area.

While the project will meet the connection request made by APLNG, it will also meet some of the energy needs of Santos GLNG. This coordinated approach will ultimately reduce the impact to landowners and the community by making sure that, where possible, Powerlink's infrastructure footprint in the region is limited.

This proposed network extension has been divided into three sections to ensure landowners and other stakeholders receive information, and can provide comment on, matters that are most relevant to them. The map inset on page 4 shows each section of the broader project.

Each section includes two projects with separate EIA processes currently under way. To receive information about any of these related projects and associated timelines, you can register for updates via the project pages on the Powerlink website, [www.powerlink.com.au](http://www.powerlink.com.au) (go to 'Projects/Southern/Wandoan South to Eurombah').



*The proposed Yuleba North to Clifford Creek and Dinoun South transmission lines (the subject of this newsletter) is expected to look similar to this existing line located near the Warrego Highway between Condamine Power Station and the Columboola Switching Station (near Miles).*

## Powerlink's Community Environmental Program

In June 2008, Powerlink partnered with Western Downs Regional Council (formerly Dalby Regional Council) to establish the Community Environmental Program (CEP). The CEP supports community-based projects aimed at delivering tangible and lasting benefits to both the community and environment.

To date, the CEP has delivered 26 community and environment projects with seven additional projects under way.

Current CEP projects include the development of a sustainability DVD by Miles State School, the installation of solar panels at Wandoan kindergarten, and the establishment of a community garden in Chinchilla. The CEP is also supporting Murilla Landcare, Taroom Shire Landcare and Chinchilla Landcare.

Through its ongoing partnership with Western Downs Regional Council, the CEP has also recently contributed to the construction of a replacement truck and machinery washdown facility at Chinchilla as part of Powerlink's commitment to weed management.

## Frequently asked questions

### *How does Powerlink manage and prevent the spread of weeds?*

Powerlink understands that weed management is a high priority for landowners and the wider community.

Our approach to declared (weed) management is guided by the *Queensland Energy Network Environment Forum (QENEF) Biosecurity Guidelines*. In addition, Powerlink works cooperatively with landowners and councils to establish strategies to minimise the spread of weeds; develops specific weed management strategies detailed in the Environmental Management Plan (EMP) for each project; undertakes research into the spread of weeds and weed seed destruction; and develops and utilises weed identification tools to assist with on-ground weed management.

### *How is the final alignment of a transmission line chosen?*

A number of factors are taken into account in determining the position of the final alignment for a transmission line:

- Social factors – such as minimising the number of homes near the alignment and impacts on current and future land use e.g. farming operations;
- Environmental factors – such as the location of regional ecosystems and rare and threatened species (if any);
- Visual factors – such as scenic amenity of the area, and road, creek and rail crossings; and
- Economic factors – such as costs associated with length of the line, type of structures, and number of line angles.

These factors are weighed up together to determine an alignment which on balance, has the lowest overall impact.

## ABOUT POWERLINK QUEENSLAND

Powerlink is a State Government Owned Corporation, which owns, develops, operates and maintains the high voltage electricity transmission network that extends 1700km from north of Cairns to the New South Wales border. Powerlink's primary role is to provide a safe, cost effective and reliable network to transport high voltage electricity from generators to electricity distribution networks owned by Energex, Ergon Energy and Essential Energy. Powerlink also transports electricity directly to large Queensland customers, such as aluminium smelters and New South Wales via the QLD/NSW Interconnector transmission line.

## FURTHER INFORMATION

For further information about the Yuleba North to Clifford Creek Transmission Line and Yuleba North to Dinoun South Transmission Lines Project, please contact Grant Roberts, Powerlink Project Manager on:

**FREECALL: 1800 635 369**  
(during business hours)

Email:  
[website.enquiries@powerlink.com.au](mailto:website.enquiries@powerlink.com.au)

Website:  
[www.powerlink.com.au](http://www.powerlink.com.au)  
(go to 'Projects/Southern/Wandoan South to Eurombah/Section 2')

