

Maintenance of high voltage electricity transmission towers in your area

August 2016

Dear resident,

As part of our ongoing maintenance program, Powerlink Queensland will start work next month (September 2016) on a project to replace some earthwire along the Ross to Chalumbin high voltage transmission line.

Powerlink may require access to the transmission line on your property using existing access tracks or easements to undertake these works. The project will not result in any planned electricity outages.

Project need

Built in 1989, the Ross to Chalumbin transmission line is a central link in Powerlink’s inland transmission network supplying high voltage electricity to North and Far North Queensland.

After operating in a tropical environment for nearly 30 years, some of the line’s earthwire has experienced corrosion and needs to be replaced to ensure the safe, reliable and cost effective supply of high voltage electricity is maintained into the future.

The transmission line runs for 244km between Ross Substation, about 20 km south of Townsville, and the Chalumbin Substation, about 40 km north-west of Tully.

Importance of earthwires

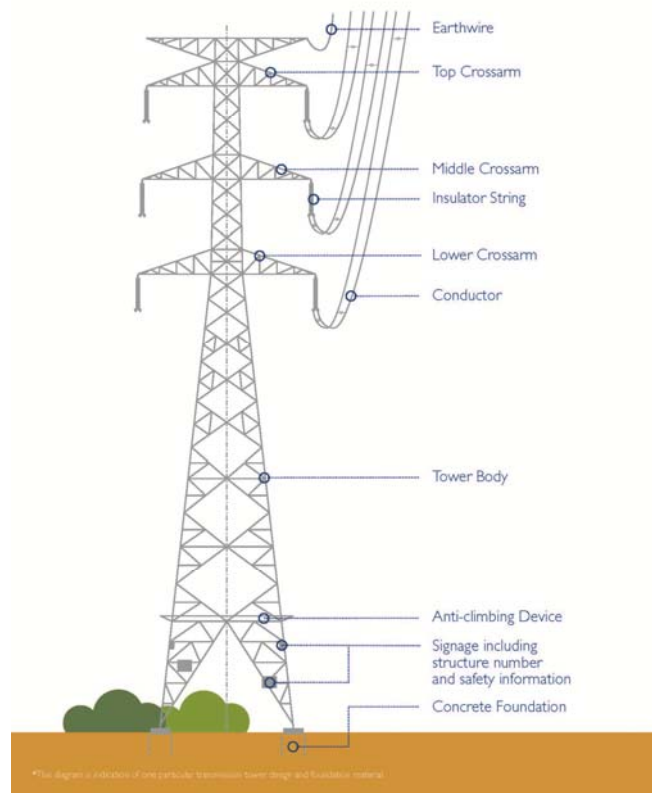
Earthwires play an important role in how our transmission network operates. Located at the very top of transmission towers, they shield the line from lightning strikes and act as a communication path to remotely monitor the network.

Overview of work

As per the attached map, the earthwire will be replaced progressively in three stages along the line. We expect the following project timings (weather permitting):

Stage	Preliminary helicopter inspections and on-ground site visits	Actual earthwire replacement works using helicopters and ground crews
1	Completed late July/early August 2016	September 2016
2	Completed late July/early August 2016	September 2016
3	September 2016	October 2016

High Voltage Transmission Tower*



Use of helicopters

Helicopters will be used to help string the new earthwire to minimise the impact on nearby properties and ground-level vegetation. We aim to be as quick and non-disruptive as possible during these works, but there is the potential for some noise. Helicopters also have the potential to startle some livestock. **Please contact the Powerlink representative below if you would like to further discuss the use of helicopters to undertake this project.**

Property access

Some towers will also need to be accessed on-the-ground to help facilitate the works. At these sites, cranes and elevated platform vehicles will be used to complete the necessary maintenance activities.

If access is required to the easement on your property, a Powerlink representative will contact you directly to make suitable arrangements and provide further information on the scope and timing of this work.

Timings of work

The work days for this project are based on a '10 days on and four days off' roster, and works will occur between 6.30am and 6.30pm. On this roster we may need to work on a Sunday on or near your property. If you have any concerns regarding this roster, please contact us.

Minimising potential impacts

We are committed to safely managing potential impacts associated with these works. The project will be undertaken in accordance with rigorous environmental management requirements, which outline how potential environmental and social impacts will be minimised and managed.

All activities will be undertaken in accordance with any property entry conditions and Powerlink's Land Access Protocol, which be viewed at www.powerlink.com.au (go to 'Landholders & Property').

Further information

If you would like more information about this project, please contact the Powerlink representative listed below or alternatively visit our website at www.powerlink.com.au (go to 'Projects' > 'North Queensland').

Vikram Dhiman
Project Manager
Phone 3860 2483

We thank you for your patience and understanding while this essential project is completed.

About Powerlink Queensland:

Powerlink is a State Government Owned Corporation, which owns, develops, operates and maintains the high voltage electricity transmission network that extends 1700km from north of Cairns to the New South Wales border. Find out more about Powerlink: www.powerlink.com.au (go to 'About Powerlink').



For further information:
FREECALL 1800 635 369 | www.powerlink.com.au



SAFE FOR LIFE
Everyone. Everywhere. Everyday.