



POWERLINK QUEENSLAND USING VEGETATION TO SCREEN TRANSMISSION LINES

Powerlink Queensland strives to minimise the visual impacts of its infrastructure on landholders.

One of the considerations for new transmission line projects is identifying tower structure locations that reduce visual impact and offer opportunities to maintain as much existing vegetation as possible.

The visual effect of transmission lines can also be reduced by suitable landscaping treatments located outside of Powerlink easements in streets and private properties, in conjunction with existing vegetation.

In certain situations, with the right plant choices in the right areas, you may be able to effectively and safely screen views of transmission lines and, at the same time, enhance the visual quality of the environment in which you live.

Planting can be done on your property, but only grasses/herbs and low growing vegetation should be planted on easements, as trees and taller vegetation could become a safety hazard and would need to be removed. Always contact your Local Government before planting on council property or your street.

Screening should take into account your main viewing areas like a deck or the outlook from your lounge room or kitchen window.

Please refer to Figure 1 below for an example of effectively screening a transmission line, by combining new plantings with existing vegetation.

The information in this brochure is provided as a guide only. It is general in nature and may not apply to particular locations or circumstances. It is not expert landscaping or horticultural advice.

The species lists provided are by no means complete and some trees may not grow successfully or be available in your area.

Please consult your local member of the Nursery and Garden Industry Australia association for advice on your specific requirements.

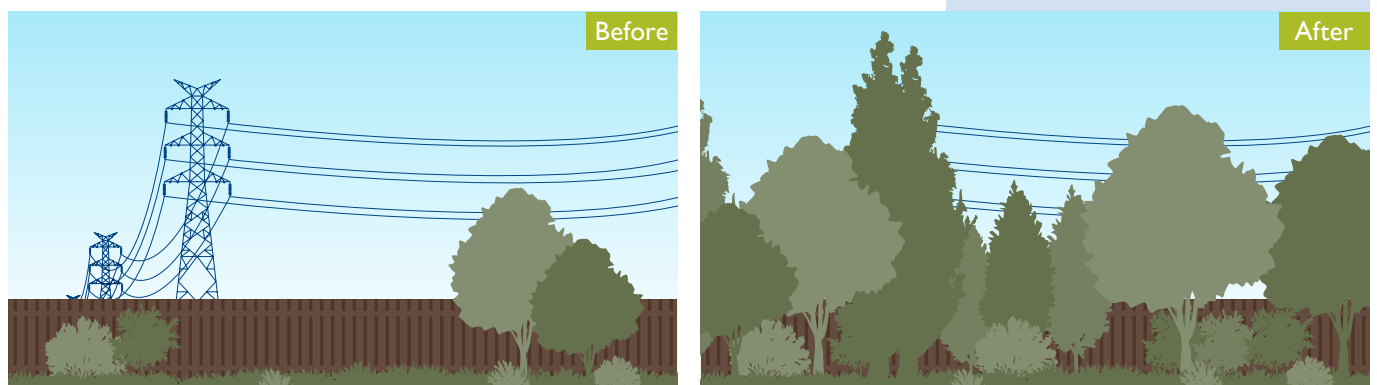


Figure 1. Planting vegetation off the easement can effectively screen transmission lines.

Successful planting tips

Soil conditions and climate vary considerably throughout Queensland, therefore selecting the correct plant species, preparing for planting and continuing maintenance are critical. The following guidelines will help you to successfully use vegetation to screen transmission lines.

Large trees do not always effectively screen the view, especially when located some distance from a house. Smaller trees and shrubs, and garden landscaping techniques, can be very effective in screening views when located near a house as shown in Figures 2 and 3.

If you are planting vegetation near a transmission line, it should be planted so that it:

- is not within five metres (m) either side of the area directly below and between the transmission line wires
- is not within 20m of a transmission line tower or pole
- has a mature height of less than 3.5m.

Please contact Powerlink before planting vegetation on a transmission line easement. Some vegetation can be planted on easements, but it is subject to Powerlink's assessment and consent.

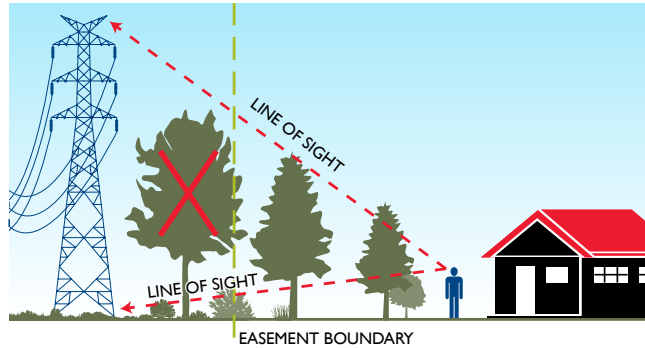


Figure 2. Planting small trees or shrubs to create a 'visual wall'.

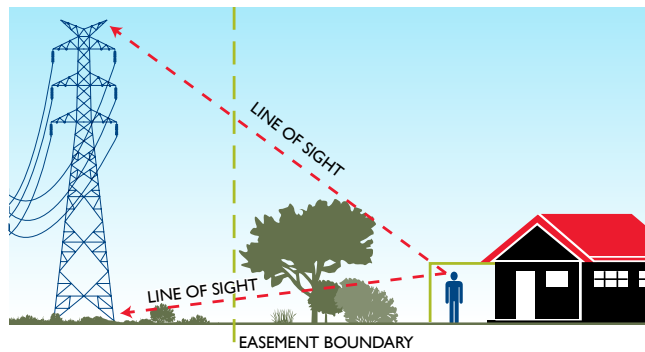


Figure 3. Using landscaping features (e.g. pergolas or climbers on frames) to create a 'visual ceiling'.

Planting suggestions

Powerlink encourages the planting of native species and there are a range of plants which can assist with screening in most situations. It is usually most effective to use a combination of planting groups. The species lists outlined in this brochure have been categorised for different regions across Queensland.

When planting outside of the easement, consider the distance of the planting and allow enough space for future plant growth.

Note: only plant grasses around tower footings.

South East Queensland

Low growing vegetation suitable for planting within the easement

Scented Top <i>Capillipedium spicigerum</i>	Guinea Flower <i>Hibbertia sp.</i>
Barbed Wire Grass <i>Cymbopogon refractus</i>	Blady Grass <i>Imperata cylindrica</i>
Dianela <i>Dianella sp.</i>	Mat Rush <i>Lomandra sp.</i>
Winter Apple <i>Eremophila debilis</i>	Bower of Beauty <i>Pandorea jasminoides</i>
Wombat Berry <i>Eustrephus latifolius</i>	Plectranthus <i>Plectranthus sp.</i>
Scrambling Lilly <i>Geitonoplesium cymosun</i>	Native Raspberry <i>Rubus sp.</i>
Native Sarsaparilla <i>Hardengeria violacea</i>	Kangaroo Grass <i>Themeda triandra</i>

South East Queensland (continued)

Shrubs suitable for planting outside the immediate easement

Flat Stemmed Wattle <i>Acacia complamata</i>	Sticky Hop Bush <i>Dodanea viscosa</i>
Native Ginger <i>Alpinia caerulea</i>	Purple Pea Bush <i>Hovea acutifolia</i>
Midyum Berry <i>Austromyrtus dulcis</i>	Pea Bush <i>Hovea sp.</i>
Twiggy Myrtle <i>Babingtonia similis</i>	Dog Wood <i>Jacksonia scoparia</i>
Baekea <i>Baekea sp.</i>	Wild May <i>Leptospermum polygalifolium</i>
Dwarf Banksia <i>Banksia oblongifolia</i>	Tea Tree <i>Leptospermum sp.</i>
Swamp Banksia <i>Banksia robur</i>	Thyme Myrtle <i>Melaleuca thymifolia</i>
Golden Candlesticks <i>Banksia spinulosa</i>	Blue Tongue <i>Melastoma malabathricum (affine)</i>
Native Coffee Bush <i>Breynia oblongifolia</i>	Sago Flower <i>Ozmanthus diosmifolius</i>
Black Thorn <i>Bursaria spinosa</i>	Geebung <i>Persoonia cornifolia</i>
Lolly Bush <i>Clerodendrum floribundum</i>	Hairy Bush Pea <i>Pultanea villosa</i>
Cordyline <i>Cordyline sp.</i>	Brush Senna <i>Senna acclinis</i>
Small Leaf Hop Bush <i>Dodanea Triangularis</i>	Coastal Rosemary <i>Westringia fruticosa</i>
Forest Hop Bush <i>Dodanea Triquetra</i>	Native Rosemary <i>Westringia sp.</i>

Plantings suitable only where they will not impact Powerlink assets or easements

Brisbane Wattle <i>Acacia fimbriata</i>	Macaranga <i>Macaranga tanarius</i>
Wattle <i>Acacia sp.</i>	Snowy Tea Tree <i>Melaleuca irbyana</i>
Small Kurrajong <i>Brachychiton bidwillii</i>	Snow in Summer <i>Melaleuca linarifolia</i>
Tuckeroo <i>Cupianiopsis sp.</i>	Paper Bark <i>Melaleuca sp.</i>
Plunket Mallee <i>Eucalyptu curtisii</i>	Pavetta <i>Pavetta australiensis</i>
Cheese Tree <i>Glochidion fernandi</i>	Brisbane Laurel <i>Pittosporum revolutum</i>
Tulipwood <i>Harpulia pendula</i>	Lilly Pilly <i>Sysigium sp.</i>

Brigalow Belt

Low growing vegetation suitable for planting within the easement

Wallaby Grass <i>Austrodanthonia bipartita</i>	Cut Leaf Daisy <i>Brachyscome multifida</i>	Brigalow Grass <i>Paspilidium caespidiodes</i>
Small-flowered Wallaby Grass <i>Austrodanthonia setacea</i>	Blue Trumpet <i>Brunaniella australis</i>	Slender Rat's Tail Grass <i>Sporobolus creber</i>
Bamboo Grass <i>Austrostipda ramosissima</i>	Curly Windmill Grass <i>Enteropogon cicularis</i>	Native Spinach <i>Tetragonia tetragonioides</i>
	Common Rush <i>Juncus usitatis</i>	Kangaroo Grass <i>Themeda triandra</i>

Shrubs suitable for planting outside the immediate easement

Scrub Boonaree <i>Alectryon diversifolius</i>	Orange Boxwood <i>Maytenus disperma</i>	Black Cotton Bush <i>Maireana decalvans</i>
Currant Bush <i>Carissa ovata</i>	Turkey Bush <i>Eremophila desertii</i>	Butterfly Bush <i>Pavetta australiensis</i>
Ruby Saltbush <i>Enchylaena tomentosa</i>		

Plantings suitable only where they will not impact Powerlink assets or easements

Brigalow <i>Acacia harpophylla</i>	Belah <i>Casuarina cristata</i>	Rosella <i>Hibiscus heterophyllus</i>
Red Ash <i>Alphitonia excelsa</i>	Small Leafed Tuckeroo <i>Cupianopsis parvifolia</i>	Green Bolly Gum <i>Neolitsea australiensis</i>
Warrior Bush <i>Apophyllum anomalum</i>	Weeping Koda / Peach Bush <i>Ehretia membranifolia</i>	Small-fruited Mock Olive <i>Notelaea microcarpa</i>
Kurrajong <i>Brachychiton populneus</i>	Pilliga Box <i>Eucalyptus pilligaensis</i>	Quinnine Bush <i>Petalostigma pubescens</i>
Bottle Tree <i>Brachychiton rupestris</i>	Poplar Box <i>Eucalyptus populnea</i>	Gumbi Gumbi <i>Pittosporum augustifolium</i>
Ooline <i>Cadellia pentastylis</i>	Wilga <i>Geijera parviflora</i>	
Wild Orange <i>Capparis mitchellii</i>		

* Sp equates to 'species'.

Central Queensland

Low growing vegetation suitable for planting within the easement

Scented Top <i>Capillipedium spicigerum</i>	Creek Mat Rush <i>Lomandra sp.</i>
River Lilly <i>Crinum pedunculatum</i>	Bower of Beauty <i>Pandorea jasminoides</i>
Barbed Wire Grass <i>Cymbopogon refractus</i>	Wonga Vine <i>Pandorea pandorana</i>
Blue Flax Lilly <i>Dianella caerulea</i>	Native Plumbago <i>Plumbago zeylonica</i>
Qld Blue Grass <i>Dichanthium sericeum</i>	Cardwell Lilly <i>Proiphys amboinensis</i>
Blady Grass <i>Imperata cylindrica</i>	Kangaroo Grass <i>Themeda triandra</i>
Spiny Headed Mat Rush <i>Lomandra longifolia</i>	

Shrubs suitable for planting outside the immediate easement

Flat Stemmed Wattle <i>Acacia complanata</i>	Hakea <i>Hakea purpurea</i>
Crowded Leaf Wattle <i>Acacia conferta</i>	Purple Pea Bush <i>Hovea acutifolia</i>
Showy Wattle <i>Acacia decora</i>	Dog Wood <i>Jacksonia scoparia</i>
Weeping Coast Myrtle <i>Babingtonia frutescens</i>	Honey Thyme Myrtle <i>Melaleuca thymifolia</i>
Dwarf Banksia <i>Banksia oblongifolia</i>	Blue Tongue <i>Melastoma affine</i>
Native Coffee Bush <i>Breynia oblongifolia</i>	Sago Flower <i>Ozmanthus dissimifolius</i>
Cordylina <i>Cordylina sp.</i>	Native Rosemary <i>Westringia eremicola</i>

Plantings suitable only where they will not impact Powerlink assets or easements

Mt Morgan Wattle <i>Acacia podalyrifolia</i>	Cotton Wood <i>Hibiscus tiliaceus</i>
Lancewood <i>Acacia shirleyi</i>	Wild May <i>Leptospermum polygalifolium</i>
Prickly Moses <i>Acacia uclifolia</i>	Prickly-leaved Paper Bark <i>Melaleuca nodosa</i>
Small Kurrajong <i>Brachychiton bidwillii</i>	Little Evoda <i>Melicope rubra</i>
Beach Cherry <i>Eugenia reinwardtiana</i>	Lime Berry <i>Micromelum minutum</i>
Grevillea <i>Grevillea banksii</i>	Powder Puff Lilly Pilly <i>Sysigium wilsonii</i>
Native Rosella <i>Hibiscus heterophyllus</i>	

Wet Tropics Area

Low growing vegetation suitable for planting within the easement

Cordylina <i>Cordylina sp.</i>	Guinea Flower <i>Hibbertia banksii</i>	Wonga Wonga Vine <i>Pandorea pandorana</i>
Lemon Scented Grass <i>Cymbopogon ambiguus</i>	Blady Grass <i>Imperata cylindrica</i>	Native Plumbago <i>Plumbago zeylonica</i>
Blue Flax Lilly <i>Dianella caerulea</i>	Lomandra <i>Lomandra sp.</i>	Cardwell Lilly <i>Proiphys amboinensis</i>
Rasp Fern <i>Doodia aspera</i>	Bower of Beauty <i>Pandorea jasminoides</i>	Kangaroo Grass <i>Themeda triandra</i>
Millaa Millaa Vine <i>Elaeagnus triflora</i>		

Shrubs suitable for planting outside the immediate easement

Native Coffee Bush <i>Breynia oblongifolia</i>	Mountain Tea Tree <i>Leptospermum wooroonooran</i>	Geebung <i>Persoonia cornifolia</i>
Swamp Tamarind <i>Dictyoneura obtusa</i>	Thyme Myrtle <i>Melaleuca thymifolia</i>	Hairy Bush Pea <i>Pultanea villosa</i>
Dog Wood <i>Jacksonia scoparia</i>	Blue Tongue <i>Melastoma malabathricum (affine)</i>	Brush Senna <i>Senna acclinis</i>
Wild May <i>Leptospermum polygalifolium</i>	Native Mock Orange <i>Murraya ovatifoliolata</i>	Native Rosemary <i>Westringia sp.</i>
Tea Tree <i>Leptospermum sp.</i>	Sago Flower <i>Ozmanthus diosmifolius</i>	

Plantings suitable only where they will not impact Powerlink assets or easements

Native Hydrangea <i>Abrophyllum ornans</i>	Cotton Wood <i>Hibiscus tiliaceus</i>	Tree Waratah <i>Alloxylon flammeum</i>
Thornton Aspen <i>Acronychia acuminata</i>	Lime Berry <i>Micromelum minutum</i>	Fox Tailed Palm <i>Wadyetia bifurcata</i>
Beach Cherry <i>Eugenia reinwardtiana</i>	Pavetta <i>Pavetta australiensis</i>	Native Guava <i>Eupomatia laurina</i>
Native Rosella <i>Hibiscus heterophyllus</i>	Powder Puff Lilly Pilly <i>Sysigium wilsonii</i>	

* Sp equates to 'species'.

FOR FURTHER INFORMATION

Powerlink Queensland owns, develops, operates and maintains the high voltage electricity transmission network in Queensland.

FREECALL 1800 635 369 (during business hours) | Email us at: website.enquiries@powerlink.com.au

Write to us at: Powerlink Queensland PO Box 1193 Virginia QLD 4014 | Visit our website: www.powerlink.com.au