

Welcome to our new website

www.powerlink.com.au



Powerlink is excited to start the new year by unveiling our new website, making it easier for you to do business and property searches with us.

We invite you to explore our new-look website from Monday 26 February 2018 at www.powerlink.com.au.

The website:

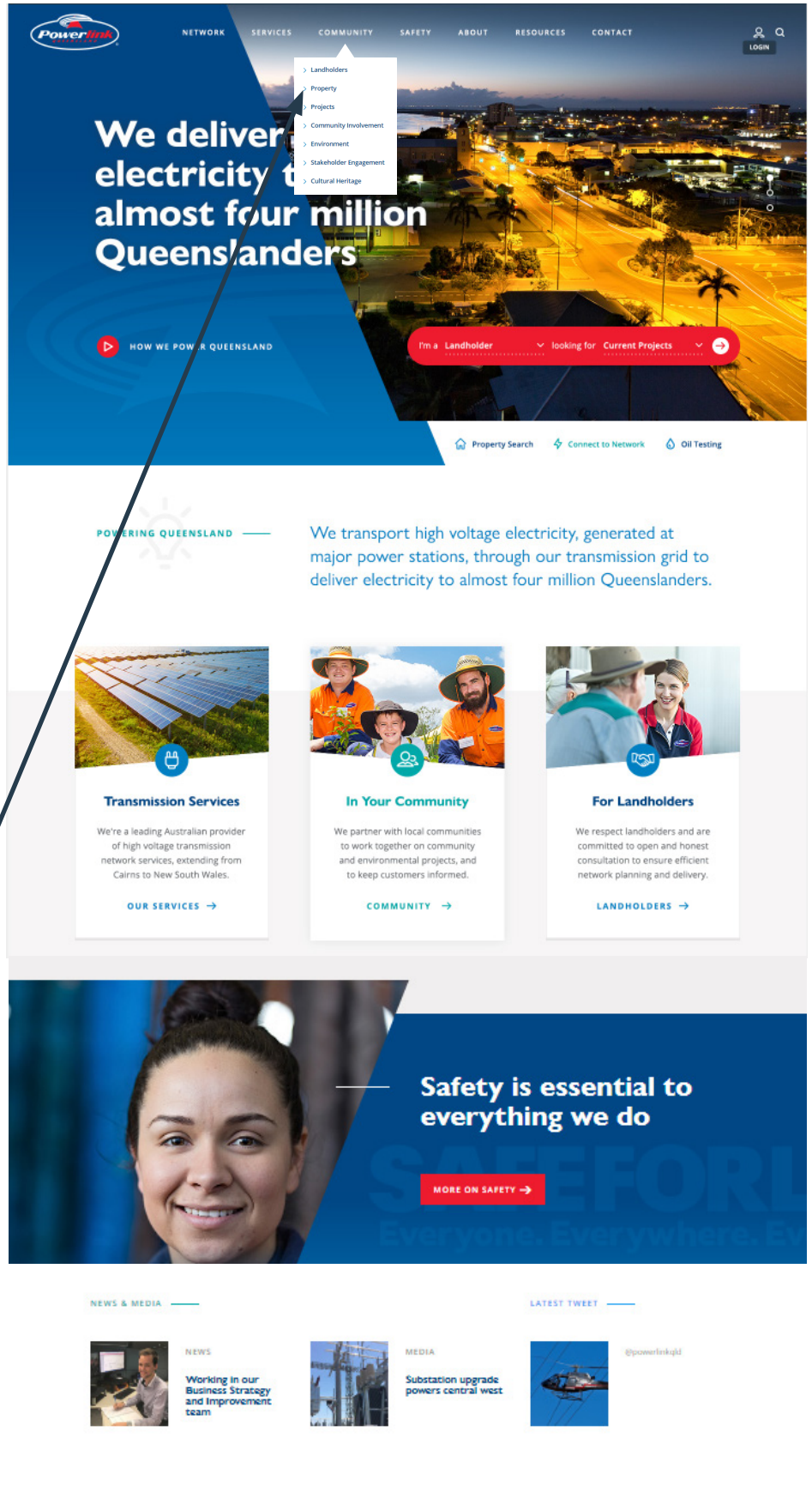
- is mobile device friendly
- is easier to navigate, and
- has improved search engine functions.

How to submit a Co-Use Request

Step 1

Visit www.powerlink.com.au.

You can access the Co-Use form through the 'Community' drop down menu, under 'Property'.



Step-by-step guide to Co-Use Requests

Step 2

Click on the Co-Use menu item.

Step 3

Select your purpose of Co-Use and start completing details for:

- Description
- Real property description, and
- Contact details.

Mandatory fields are marked with an asterix.

Step 4

Upload your document.

Step 5

Check your information supplied is correct, then tick the box confirming that the information is accurate.

Click preview.

 PREVIEW →

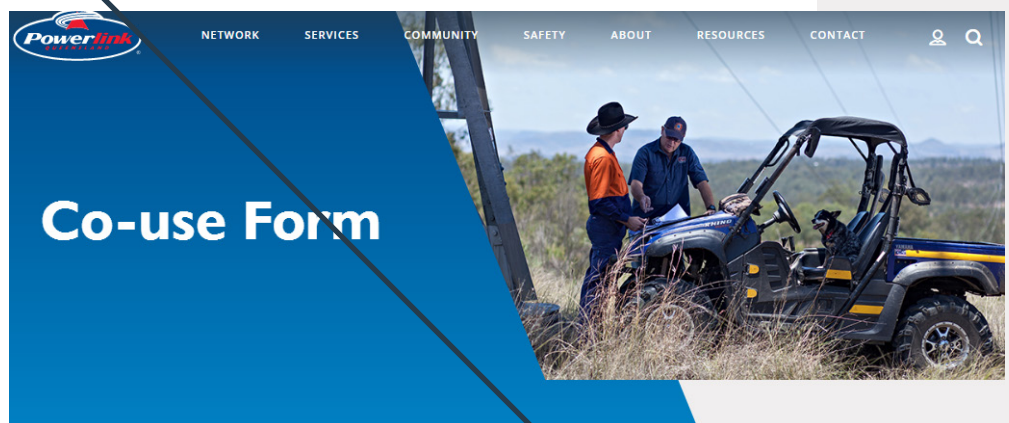
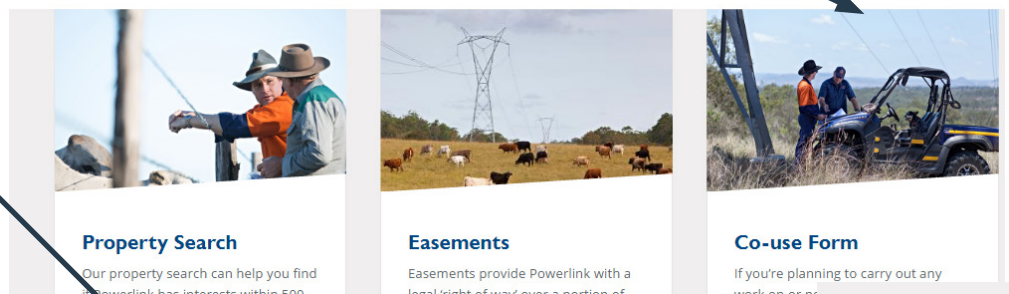
Any missed fields will be flagged for you to complete.

Step 6

Check your submission in the preview screen. If you need to change information, click 'previous'. If you're happy with the submission, click 'submit'.

< PREVIOUS →

SUBMIT →



If you're planning to carry out any work on or near a transmission line easement that is likely to require our written consent, you'll need to complete a co-use request form. Please read our Management of Co-Use Guideline prior to submitting an application.

You can fill out this form online or download a blank co-use form below

 Management of Easement Co-Use Requests Guideline.pdf	140.02 KB
 PDF Application for Co-Use.pdf	208.54 KB

Return the completed form to:
Property Services, Powerlink

Purpose of co-use *

[Choose]

1. General Building - shed, pool, awning, fence, etc
 2. Underground Services - water, gas, sewerage, electrical, comms, etc
 3. Overhead Electrical Undercrossing
 4. Rail and Transport Infrastructure - new rail works or upgrades to existing infrastructure, or new works or upgrades to transport infrastructure such as roads and bridges
 5. Lot Reconfiguration and Material Change of Use
 6. Other - any works not covered in the Purpose of Co-Use options.
- Alternatively, if you are unsure about the type of application, use this

Contact the Property Search team if you have any questions

P: 07 3866 1313

(Monday to Friday 8:30am - 4:00pm)

E: property@powerlink.com.au