

# Burning sugarcane near transmission lines



---

**Safety is essential every day for our landholders, community, first responders and our people.**

---

## About this brochure

This brochure provides important safety information for sugarcane growers, harvesters and others who work with sugarcane. It also provides important information for first responders to any fire-related incidents near our transmission network.

## General safety information

Cane fires can be dangerous near electricity transmission lines. They create dense smoke and hot gases that increase the risk of a flashover between the ground and a transmission line. A flashover is an electrical arc similar to a lightning strike. They can be life threatening and also have the potential to damage equipment and interrupt power supply.

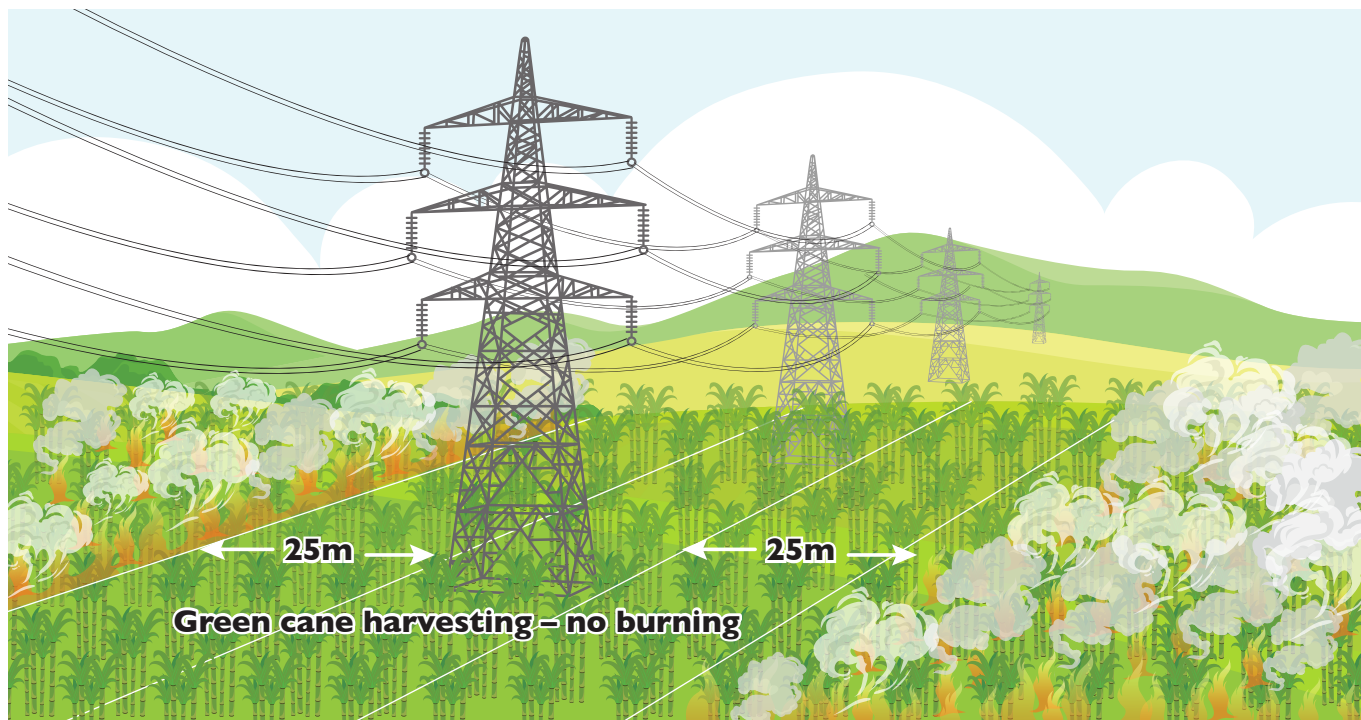
Due to their intensity, cane fires are unsafe in close proximity to transmission lines. For this reason fires and smoke should be kept at least 25 metres away at all times. If sugarcane must be burnt in the vicinity of transmission lines, it is important to ensure your safety and that of our network by following the safe working habits outlined here.

Before starting work, every person working near transmission lines should be aware of their safety obligations under the *Electrical Safety Act 2002*, *Electrical Safety Regulations 2013*, and adopt safe work practices in accordance with the Electricity Entity Requirements: *Working Near Overhead and Underground Electric Lines*.

## Safe working habits

Managing crop areas around transmission lines is the responsibility of the canegrower. For your safety, we encourage you to:

- Before starting work, take the time to plan – know exactly where transmission lines are on the property.
- Ensure all workers know the emergency procedures applicable for the work being carried out and the relevant emergency contacts should an incident occur.
- Plan a corridor 25 metres out from the transmission line on both sides where the cane will not be burnt. (refer to picture over page)
- If you have cane planted within this corridor, harvest this cane first (refer to picture over page)
- Ensure operators are aware of the height of their machinery in both stowed and working positions.
- All other cane planted outside the corridor can be burnt with consideration to current weather conditions. In particular, prevailing wind could increase the risk of flame or smoke plume near our transmission lines. This may impact worker safety and affect the operation of the transmission line.
- Keep all people, equipment, vehicles and attachments out of the corridor while the cane fire is underway.
- Notify us on 1800 635 369 at least 48 hours before burning near or in close proximity to a transmission line.



Working in close proximity to transmission lines has its hazards. Each year, workers in the cane industry make contact with electricity assets during harvesting and haul out operations, when moving machinery and plant from one location to another or when irrigating.

To ensure your safety, the diagram below provides detailed information on what to do if you bring down power lines on your property.



**We recommend that operators of machinery practise this jump / shuffle technique on a regular basis.**

### Contact Us

Further information about Powerlink and our projects can be downloaded from [www.powerlink.com.au](http://www.powerlink.com.au)

General Enquiries FREECALL 1800 635 369 (during business hours) and ask for Easement Maintenance

In case of emergency FREECALL 1800 353 031 (24 hours, 7 days a week)

Email [Easementmaintenance@powerlink.com.au](mailto:Easementmaintenance@powerlink.com.au)

[www.powerlink.com.au](http://www.powerlink.com.au) | [f](#) [t](#) [in](#) [v](#)



**SAFE FOR LIFE**  
Everyone. Everywhere. Everyday.