

Powerlink Queensland

**EXPRESSION OF INTEREST
FOR THE INSTALLATION AND
OPERATION OF LARGE-SCALE
BATTERY ENERGY STORAGE SYSTEMS
IN THE POWERLINK NETWORK**



**Addendum 01 Site Specific Information
for North Queensland**

April 2021

Disclaimer

While care was taken in preparation of the information in this document, and it is provided in good faith, Powerlink accepts no responsibility or liability (including without limitation, liability to any person by reason of negligence or negligent misstatement) for any loss or damage that may be incurred by any person acting in reliance on this information or assumptions drawn from it, except to the extent that liability under any applicable Queensland or Commonwealth of Australia statute cannot be excluded. Powerlink makes no representation or warranty as to the accuracy, reliability, completeness or suitability for particular purposes, of the information in this document.

Contents

Network Sites	2
Woree (North Queensland)	2
Tully (North Queensland)	3
Disclaimer	3

EXPRESSION OF INTEREST (EOI) FOR THE INSTALLATION AND OPERATION OF LARGE-SCALE BESS IN THE POWERLINK NETWORK

Addendum 01 – Site Specific Information for North Queensland

Network Sites

The Powerlink network is extensive, with over 1,700km of transmission lines delivering power to almost five million Queenslanders. The opportunities for network support will vary from region to region and be dependent on the network topography and the availability of land and spare bays at substations across the State.

Powerlink has identified a number of sites that have spare land and connection point suitable for the connection of a BESS and may benefit from BESS support services.

The purpose of Addendum 01 is to:

- (i) assist Proponents in replying to the EOI by applying responses to two (2) potential sites with differing area of land available for battery development; and
- (ii) enable Powerlink to better understand the information to be submitted through the EOI.

To assist Proponents in replying to the EOI Powerlink provide the following site specific information associated with two North Queensland options for consideration.

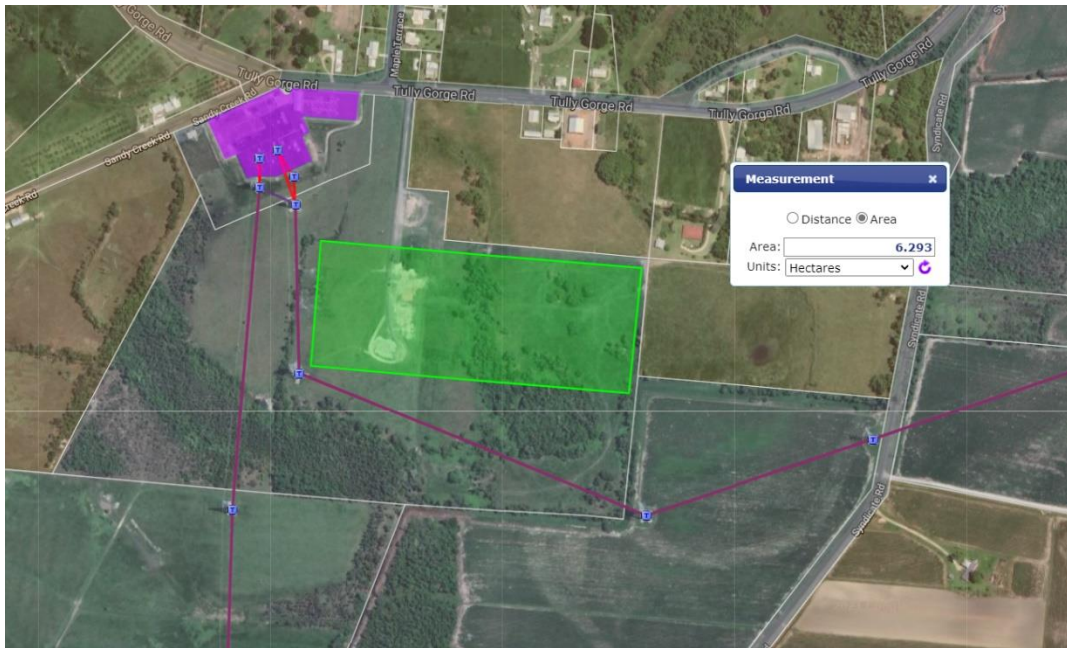
Woree (North Queensland)

Largest area of available unobstructed land	1.8 hectares
Physical Characteristics	Relatively flat unobstructed land relatively void of vegetation.
Inverter type	Grid forming or grid following inverters with a preference for grid forming



Tully (North Queensland)

Largest area of available unobstructed land	6.2 hectares.
Physical Characteristics	Relatively flat unobstructed land relatively void of vegetation.
Inverter type	Grid forming



The two sites are provided as examples only. However, they provide Powerlink with two working examples to better understand the application of the information requested in the EOI. Any assumptions made in applying the EOI requested information to the two sites should be clearly stated.

While the total number of sites is yet to be finalised, there is expected to be at least one (1) site in each region, with the potential for multiple sites in the same region. Powerlink would like to understand the number of sites Proponents are interested in partnering with Powerlink in the development of a BESS and if Proponents have a preference for particular regions.

Disclaimer

The information contained in this Addendum is owned by Powerlink and contains Powerlink's confidential information, and must not be reproduced, distributed, duplicated or altered, or otherwise disclosed outside of the Proponent or its agents authorised to review this opportunity (subject to them agreeing to keep the information confidential) without the written consent of Powerlink or as required by law.

The Proponent is only authorised to use this Addendum for the purpose of its intended use, namely, to provide a response to the Powerlink Addendum.

The information contained in this Addendum is only current at the time of its publication, it may be expressed to be subject to limitations, assumptions and exclusions, and Powerlink is not under any obligation to inform any Proponent if the information changes or becomes inaccurate. This Addendum is subject to re-evaluation by Powerlink.

While Powerlink has taken care in preparing this Addendum and it is provided in good faith, Powerlink accepts no responsibility or liability (including without limitation, liability to any person by reason of negligence, negligent misstatement or otherwise) for any loss, liability, cause of action or damage that may be incurred or suffered by any person (including the Proponent) using or relying on this information or assumptions drawn from it, except to the extent that liability under any applicable Queensland or Commonwealth of Australia statute cannot be excluded.

Powerlink's liability under any condition, warranty, or obligation implied by law in relation to this Addendum (or its preparation) that cannot be excluded is limited, in the case of goods, to the replacement of the goods, the supply of equivalent goods, the repair of the goods, paying the cost of replacing the goods or of acquiring equivalent goods, or paying the cost of having the goods replaced; and in the case of services, to the supplying of the services again or the payment of the cost of having the services supplied again.





Proponents should complete its own investigations to satisfy itself of the accuracy of the information contained in this Addendum.

Where specifically noted, this Addendum may contain information derived from third party sources. Powerlink does not warrant or promise the suitability, currency, validity, correctness or completeness of information supplied by third party sources.

Nothing in this Addendum represents an offer that is capable of acceptance by the Proponent. If the Proponent wishes to proceed with any of the options presented in this Addendum, it should contact Powerlink for further discussion about the technical and commercial feasibility of proceeding with the option.



Contact us

Registered office	33 Harold St Virginia Queensland 4014 Australia
Postal address:	GPO Box 1193 Virginia Queensland 4014 Australia
Telephone	(+617) 3860 2111 (during business hours)
Email	BusinessDevelopment@powerlink.com.au
Internet	powerlink.com.au
Social media	   

Disclaimer

While care was taken in preparation of the information in this document, and it is provided in good faith, Powerlink accepts no responsibility or liability (including without limitation, liability to any person by reason of negligence or negligent misstatement) for any loss or damage that may be incurred by any person acting in reliance on this information or assumptions drawn from it, except to the extent that liability under any applicable Queensland or Commonwealth of Australia statute cannot be excluded. Powerlink makes no representation or warranty as to the accuracy, reliability, completeness or suitability for particular purposes, of the information in this document.