

Agenda

01 Official address

The Hon. Mick de Brenni MP

02 State of the Network

Paul Simshauser

03 TAPR

Stewart Bell

04 Q&A

05 Morning tea

06 Breakout sessions

07 Summary

08 Closing address

2021 Transmission Annual Planning Report

Key Insights

Stewart Bell

Executive General Manager Network and Business
Development

TAPR Overview



Electricity demand and
energy forecasts

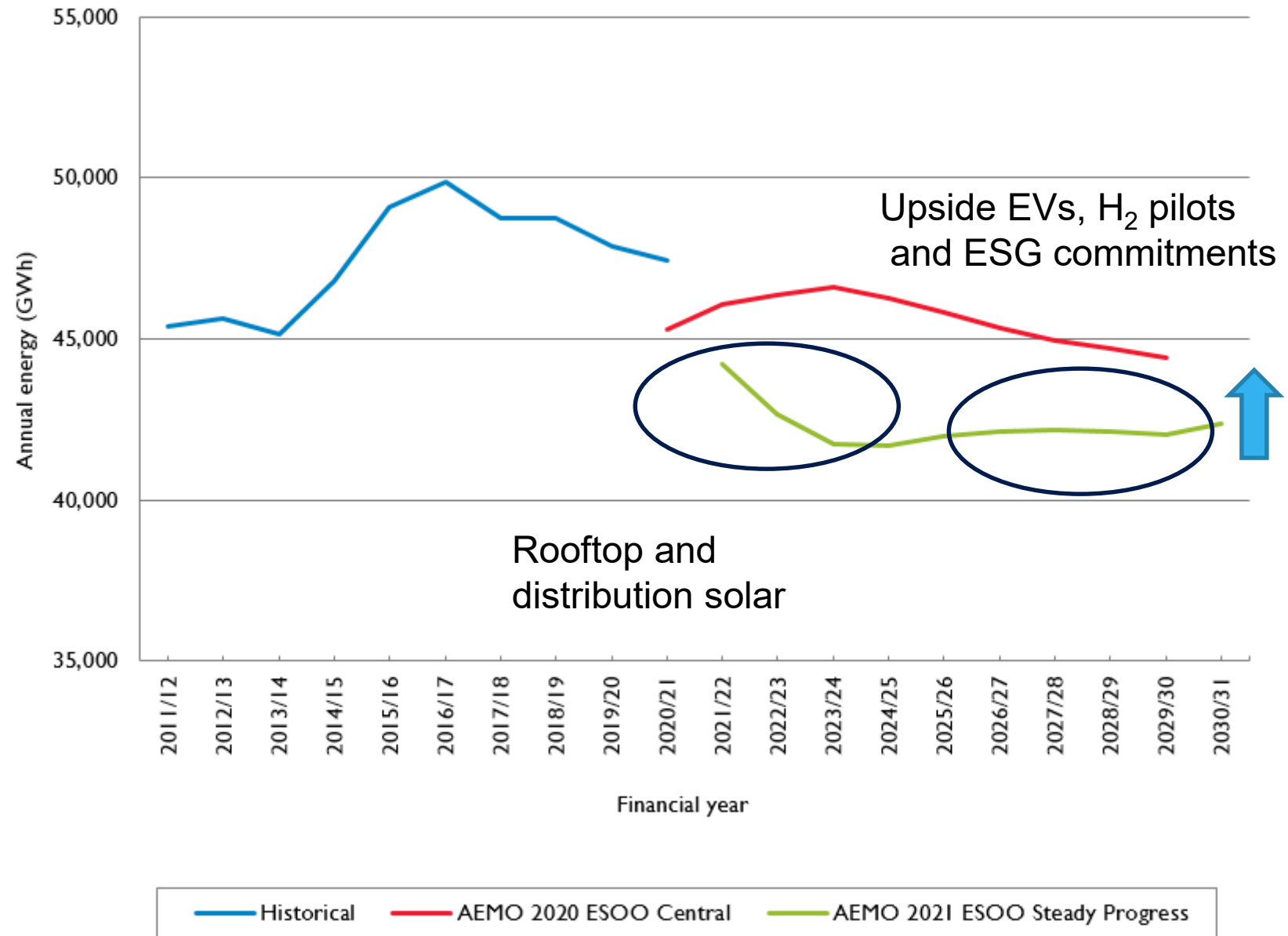


Generation outlook

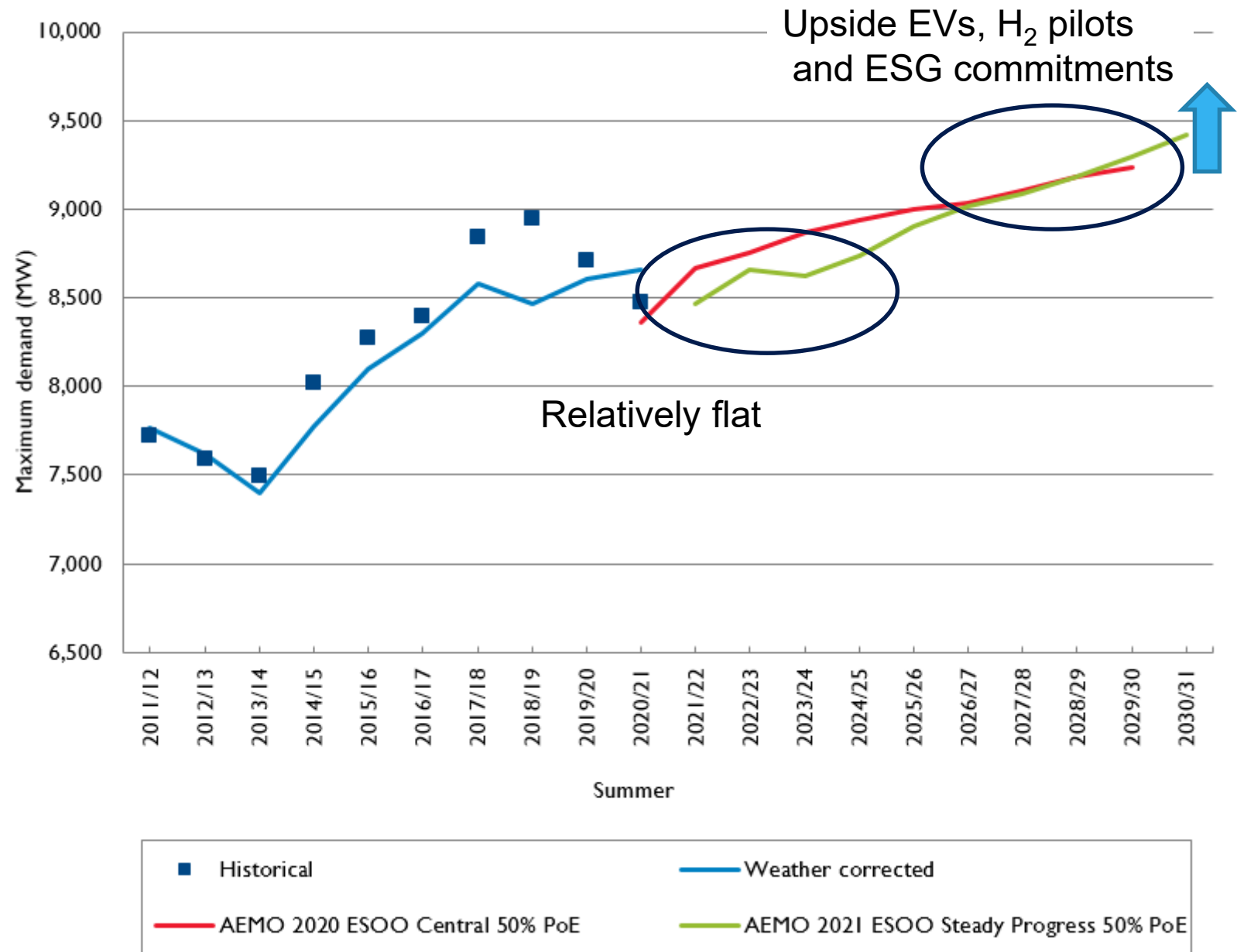


Improving performance
of the transmission
network

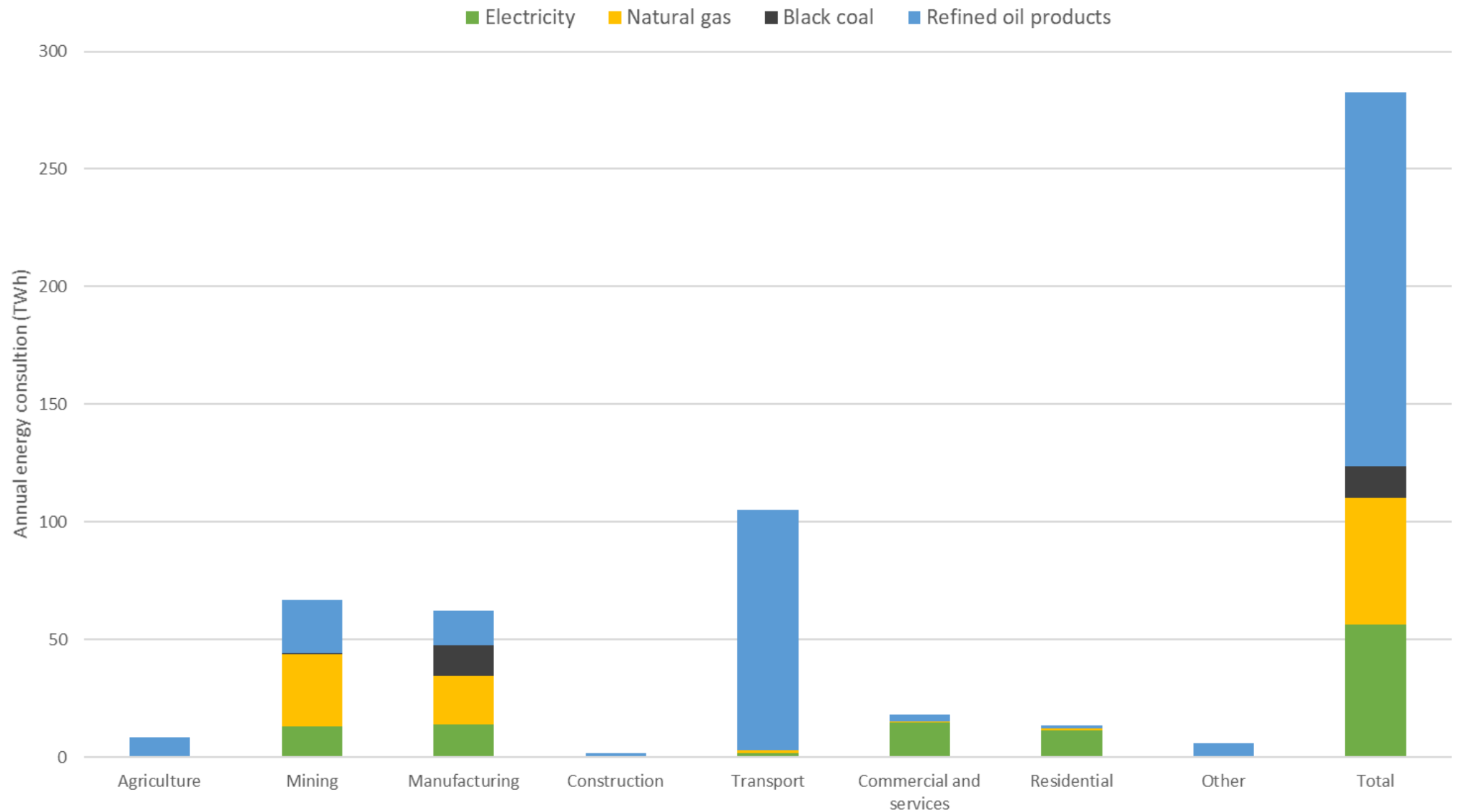
Comparison of AEMO's
2020 ESOO Central
scenario energy forecast
with the 2021 ESOO
Steady Progress scenario
forecast



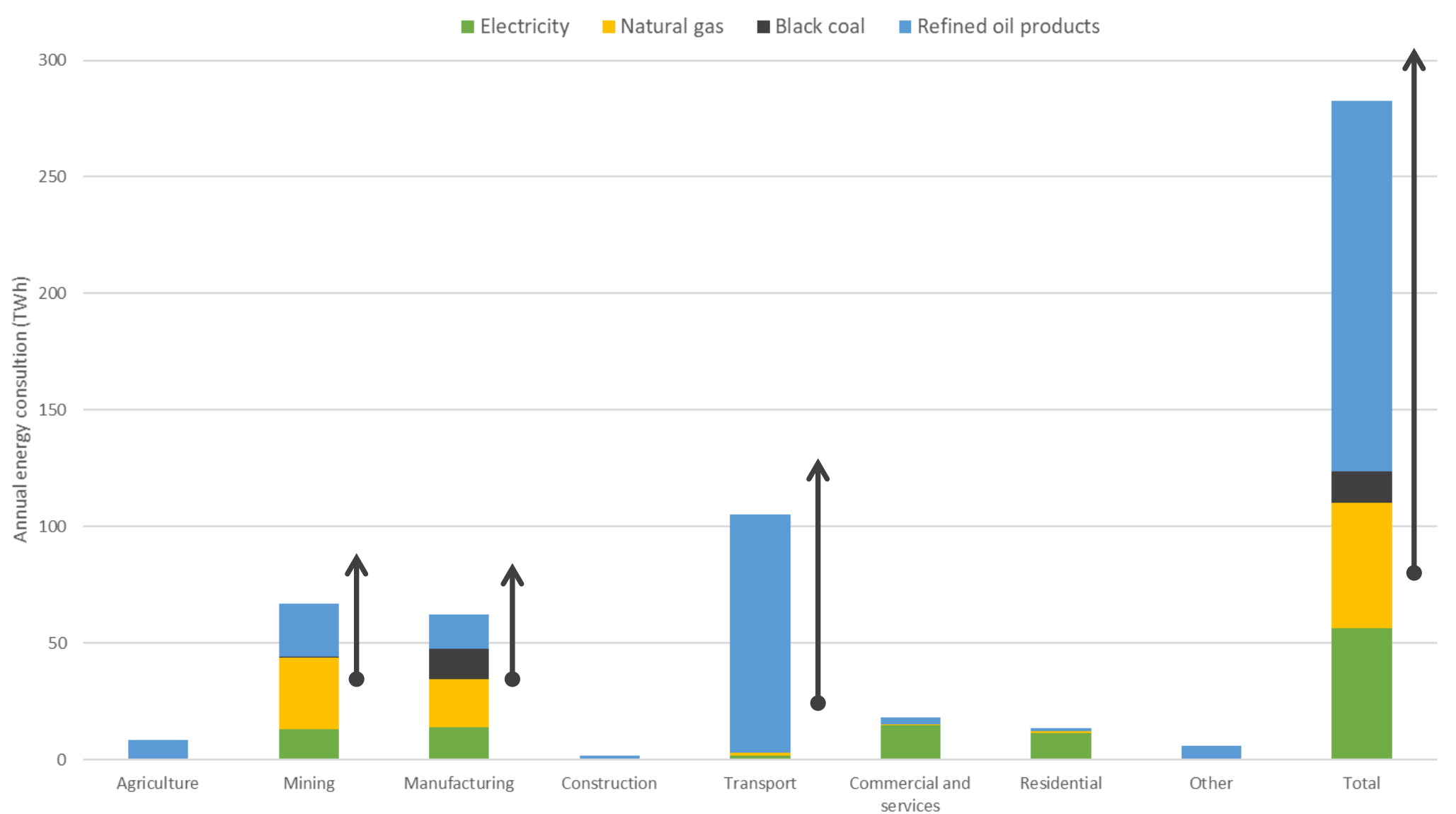
Comparison of AEMO's forecast delivered summer maximum demand based on the 2020 ESOO Central scenario forecast with the 2021 ESOO Steady Progress scenario forecast



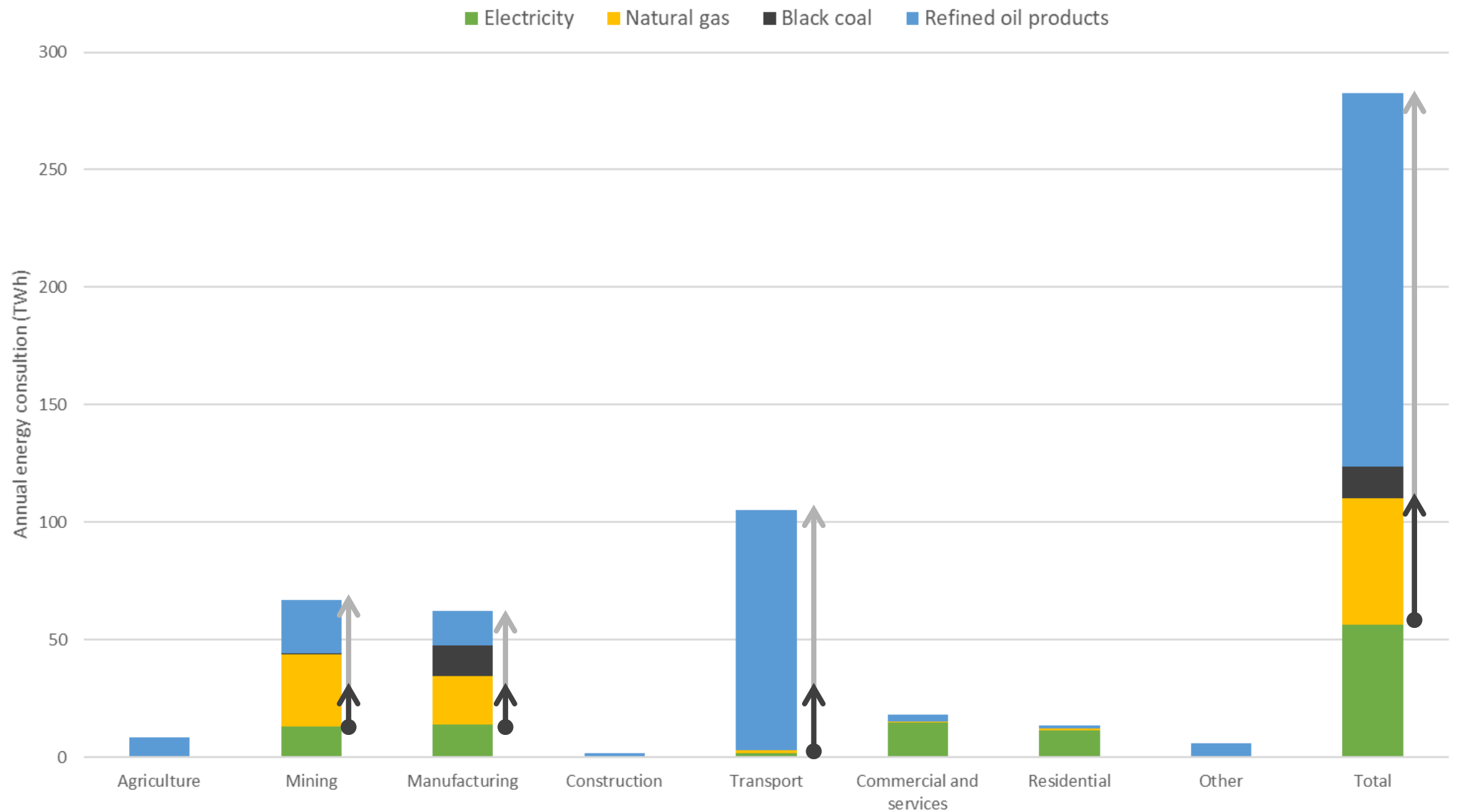
Annual energy consumption in Queensland



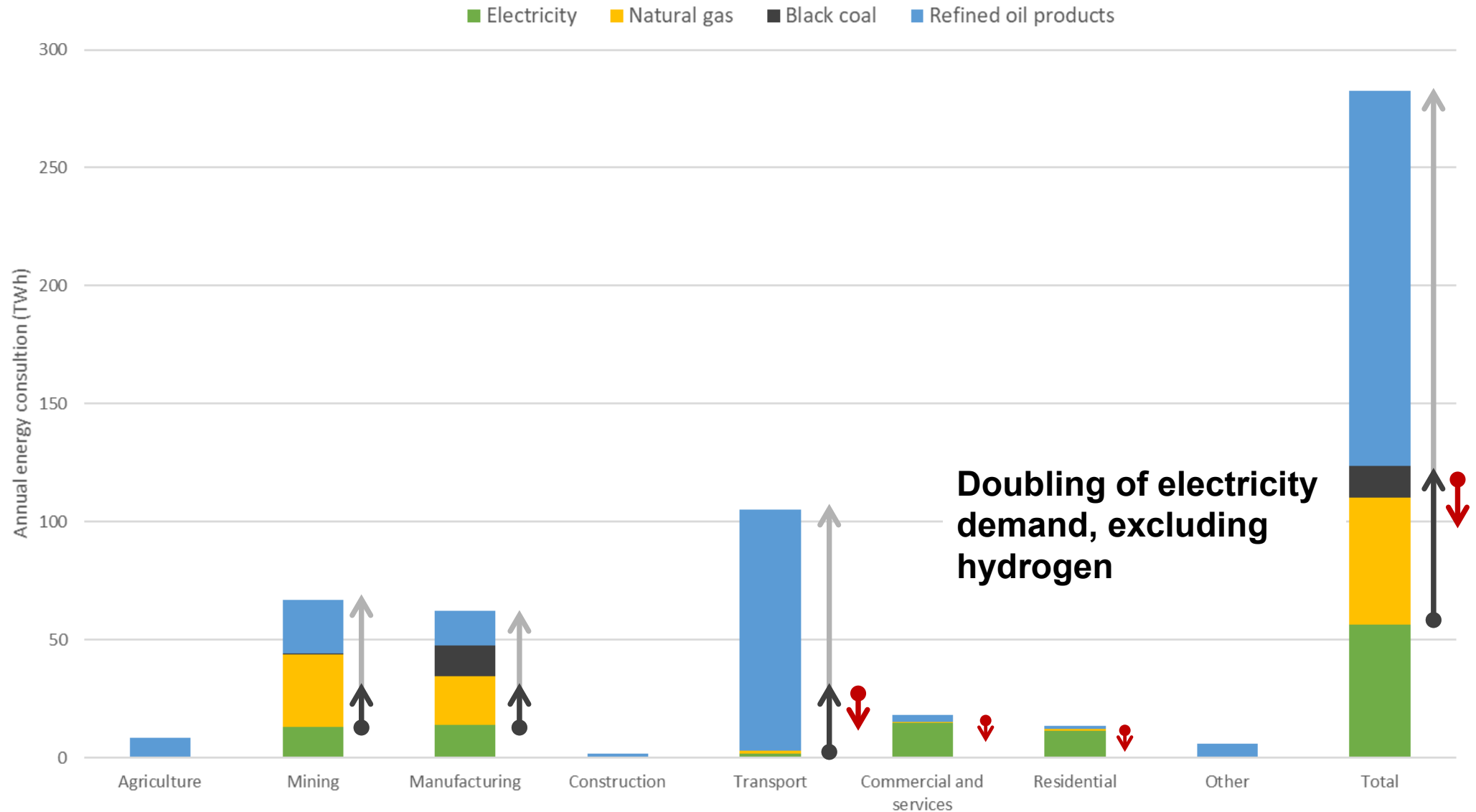
Annual energy consumption in Queensland



Annual energy consumption in Queensland



Annual energy consumption in Queensland



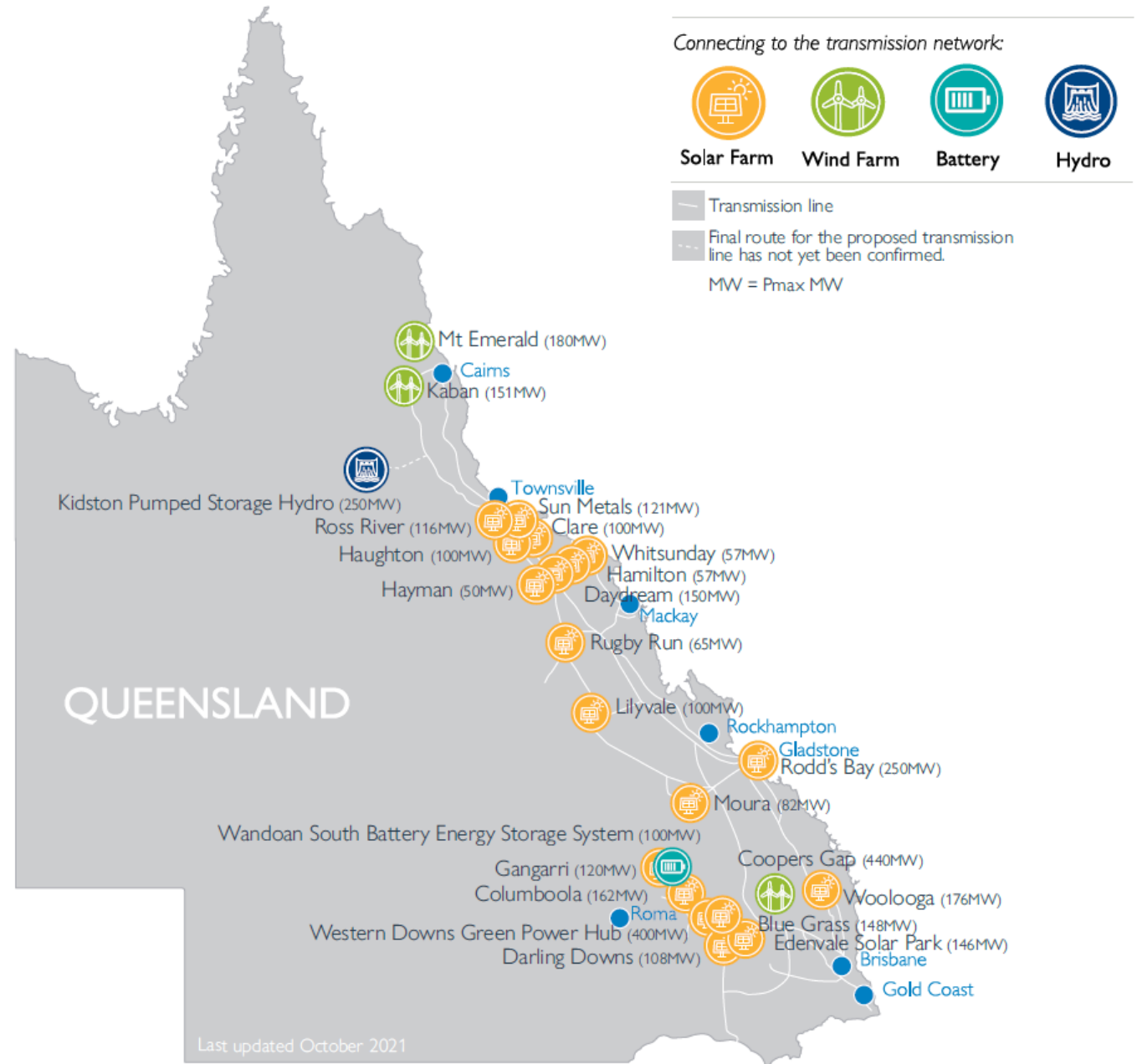
Network hosting capacity for new loads

Port	Nearest 275kV node	Available capacity at node (MW)	Potential capacity with additional renewable generation (MW)
Bundaberg	Gin Gin	800	1,200
Gladstone	Larcom Creek	400	1,300
Hay Point	Nebo	400	2,000
Mackay	Nebo	400	2,000
Abbot Point	Strathmore	400	2,700
Townsville	Ross	400	1,400

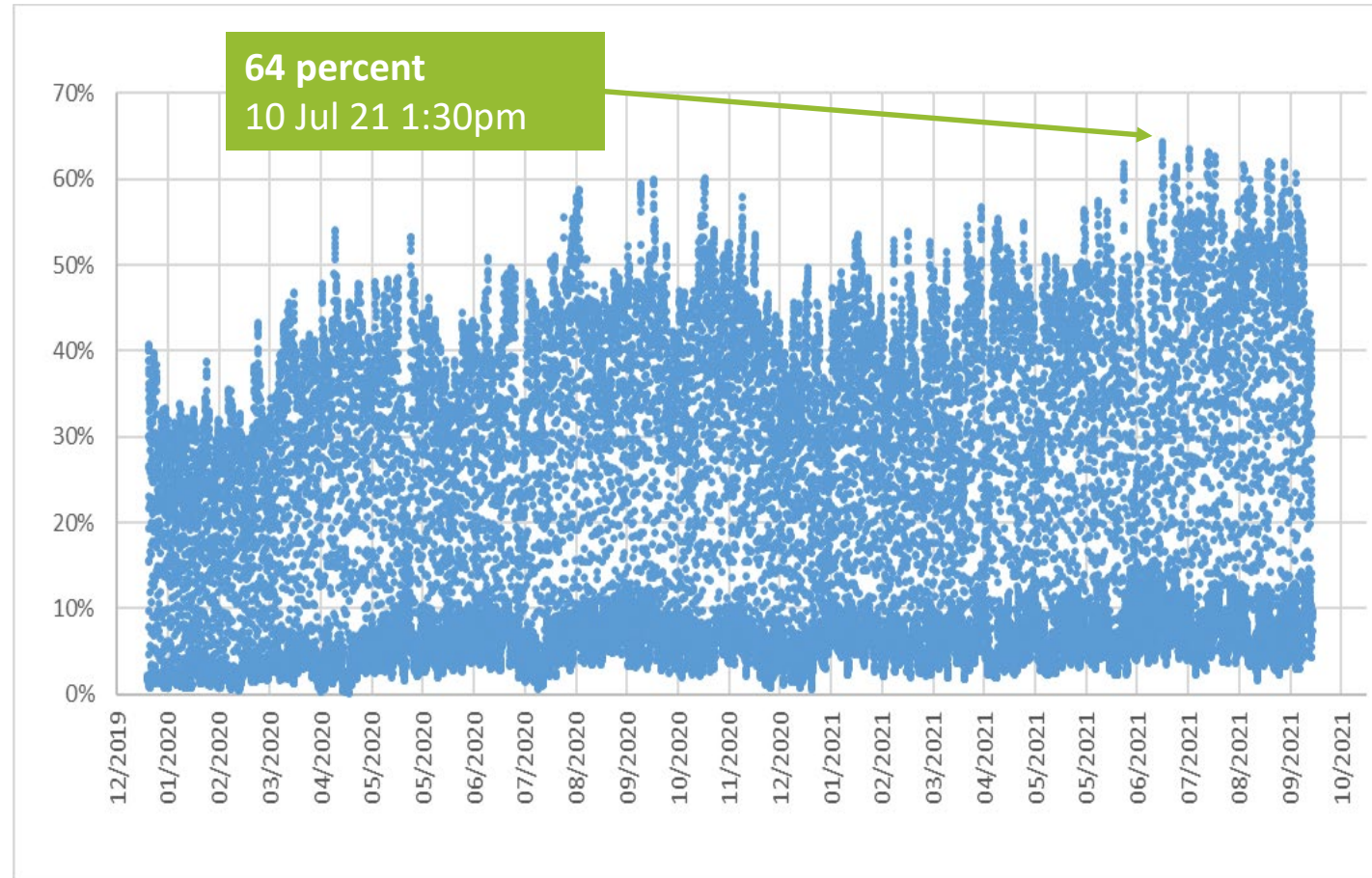
Connection projects since 2018

During 2020/21, 470MW of renewable generation capacity was committed in the Queensland region, taking the total to 4,444MW

In addition rooftop solar in the Queensland Region exceeded 4,074MW in July 2021

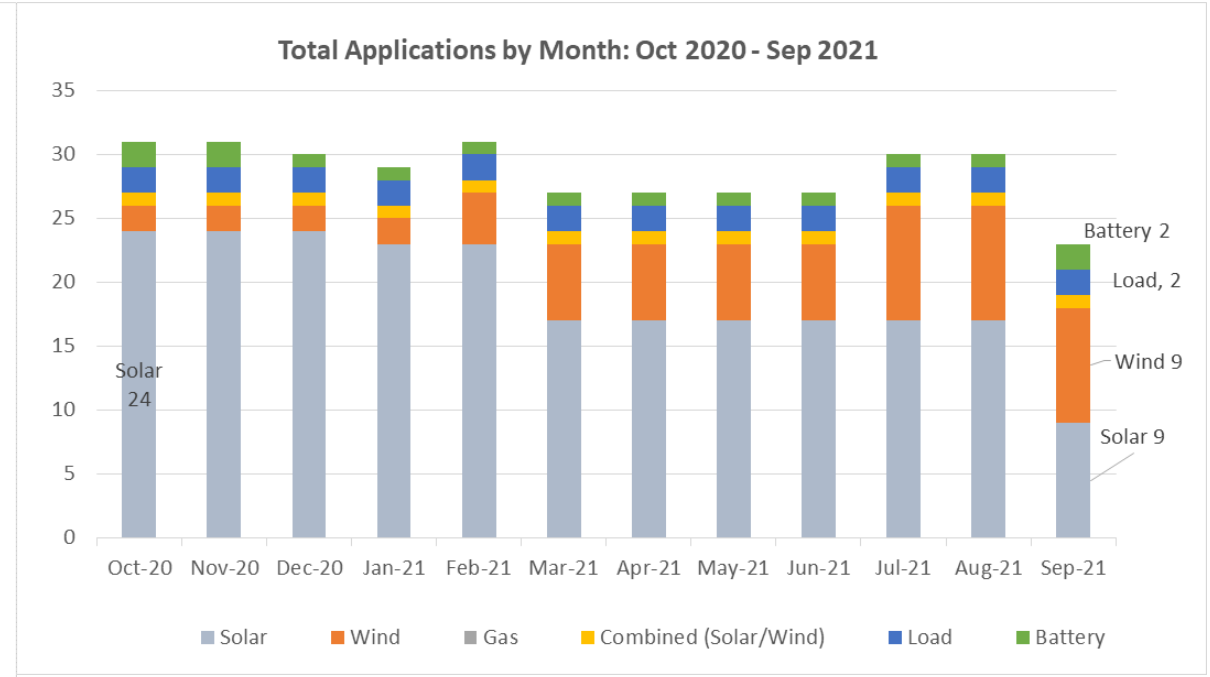
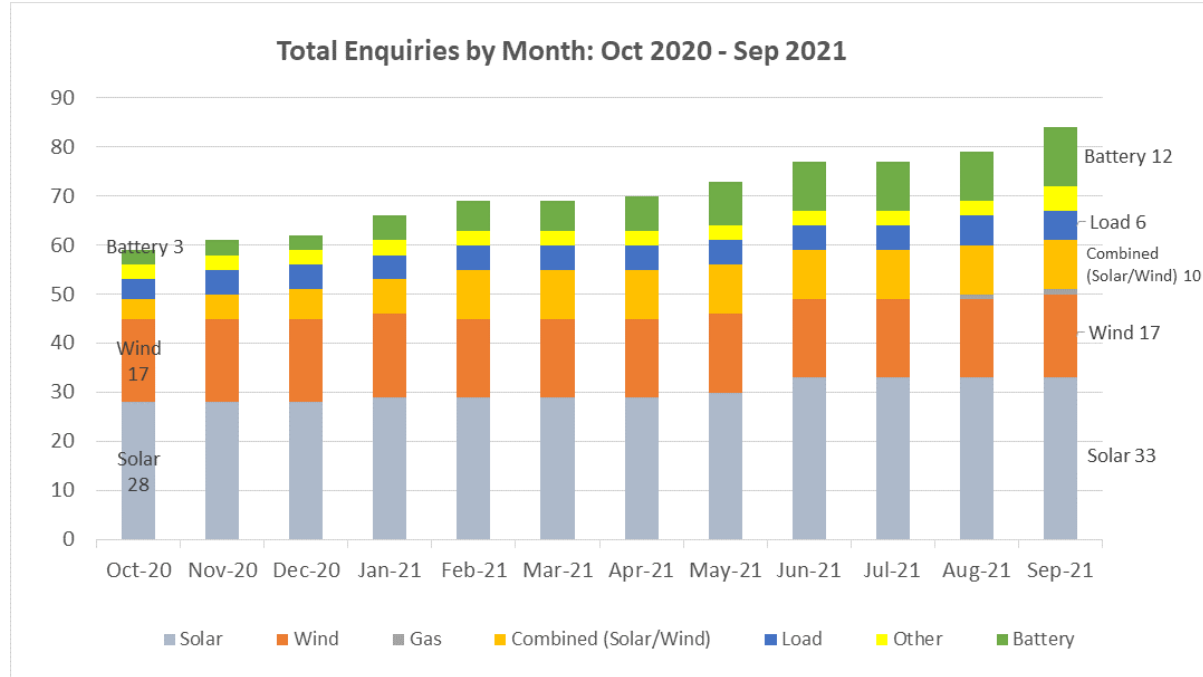


Record renewable generation



Queensland renewable generation – percentage of total energy generated

Generation outlook



- Strong continued interest in Queensland for renewable connections
 - >20,000MW of enquiries, 6,700MW of applications and ~800MW of rooftop solar p.a.
- Significant interest in battery projects
- Large scale wind more prevalent moving forward

Increasing network utilisation

Wide Area Monitoring, Protection And Control (WAMPAC)

