

# MACINTYRE WIND FARM PRECINCT

Transmission network connection



March 2022



## About the project

Powerlink has been engaged by Acciona to connect the MacIntyre Precinct (MacIntyre Wind Farm and CleanCo's Karara Wind Farm) to the Queensland electricity grid.

The transmission infrastructure for the project includes two new switching stations and approximately 65km of 330kV transmission line connecting the precinct to Powerlink's existing 330kV Millmerran to Middle Ridge transmission line. The project will be delivered in a staged approach starting from Tummaville (switching station site) and proceed south along the transmission line alignment to the wind farm location. Construction works are expected to commence in May 2022, and will continue for a period of 18 to 24 months, subject to good weather and site conditions.

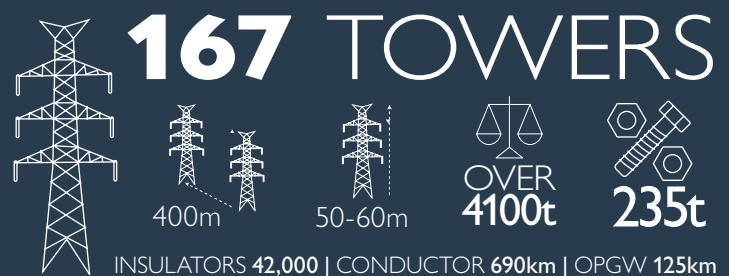
## What has been happening?

Acciona has been responsible for coordinating relevant approvals for the wind farm and associated transmission infrastructure – including line corridor selection and land acquisition processes. Following landholder consultation and agreement, the transmission line route and substation locations have been determined. In April 2021, Acciona received development approval for the wind farm under the Queensland State Assessment and Referral Agency.

As part of our early works agreement with Acciona, we undertook preliminary activities including transmission line design and geotechnical investigations for this early stage of the project.

UGL Limited has been awarded the contract to build the transmission infrastructure to connect the MacIntyre Precinct to the existing network. We will work closely with UGL to ensure local businesses are given every opportunity to be involved and help us to deliver the project.

Throughout this process, we remain committed to engaging openly and transparently with landholders and other stakeholders about all aspects of our work. We know seeking local input and feedback will be important to successful project delivery.

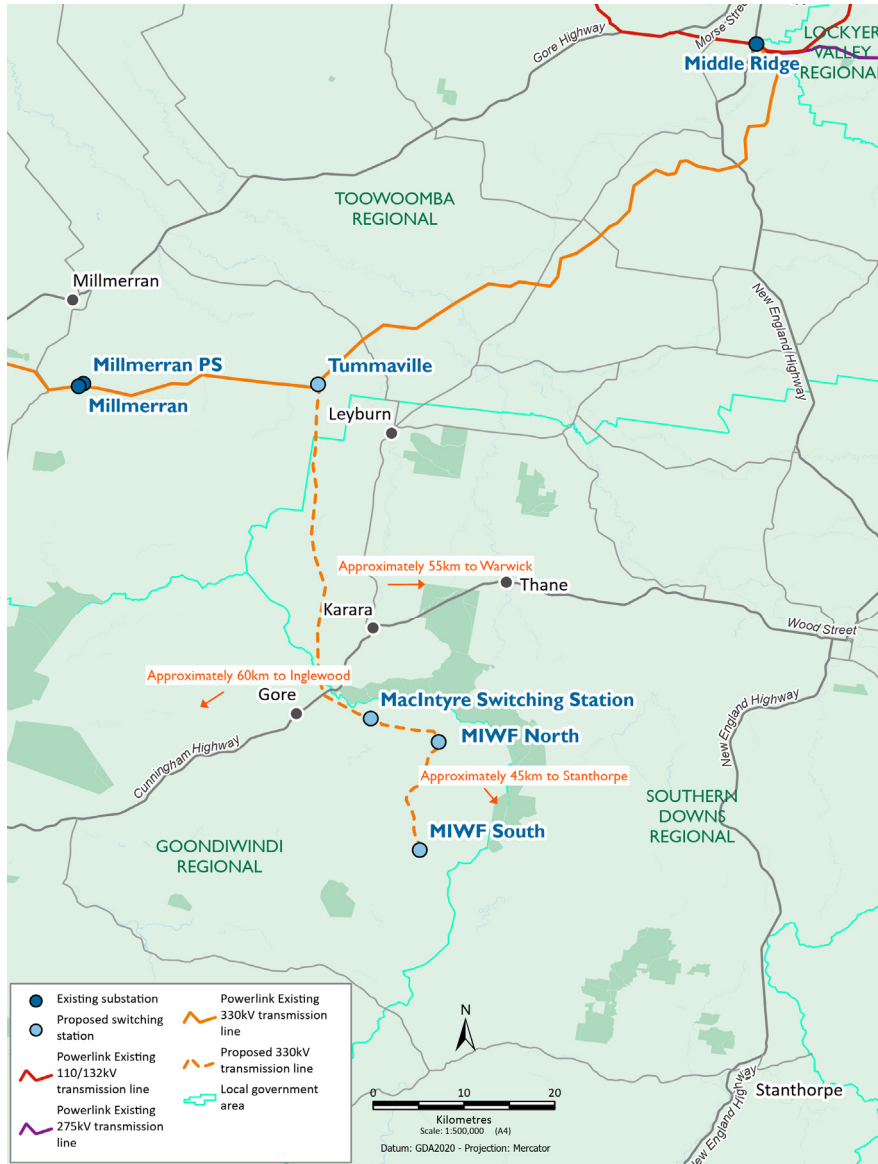


GOONDIWINDI | SOUTHERN DOWNS | TOOWOOMBA



**CONSTRUCTION WORKFORCE**  
220 jobs supported

## Project Map



## What is a switching station?

Switching stations allow for the safe and reliable connection of additional circuits to the network. They protect the network by monitoring and controlling the flow, stability, and quality of electricity.

## About Powerlink

Powerlink is a Government Owned Corporation that owns, develops, operates and maintains the transmission network in Queensland. We connect Queenslanders to a world-class energy future, providing electricity to five million Queenslanders and 238,000 businesses.

We are also responsible for connecting large-scale renewable energy developments, including wind and solar, and providing electricity to large industrial customers in the rail, mining and LNG sectors.

## Connect with us

Visit our website for further details about how we are supporting development of the MacIntyre Precinct, or contact:

Dave Monaghan  
Landholder Relations Advisor  
0438 991 126  
[macintyre@powerlink.com.au](mailto:macintyre@powerlink.com.au)  
[www.powerlink.com.au/MacIntyre](http://www.powerlink.com.au/MacIntyre)



## Contact Us

General Enquiries 1800 635 369 (during business hours)  
[pqenquiries@powerlink.com.au](mailto:pqenquiries@powerlink.com.au)  
[www.powerlink.com.au](http://www.powerlink.com.au)



## ACKNOWLEDGEMENT

Powerlink acknowledges the Traditional Owners and their custodianship of the lands and waters of Queensland and in particular, the lands on which we operate. We pay our respect to their Ancestors, Elders and knowledge holders and recognise their deep history and ongoing connection to Country.