

# WAMBO WIND FARM CONNECTION PROJECT

## Draft Corridor Selection Report Summary



March 2022



### The Wambo Wind Farm Connection Project

Powerlink has been engaged by the Wambo Wind Farm proponents, Cubico and Renewable Energy Partners, to investigate the connection of the proposed wind farm to our transmission network.

Due to the scale of generation, this would require construction of a double circuit 275kV transmission line between a substation proposed to be located at Diamondy on the Wambo Wind Farm site and Powerlink's existing Halys Substation (located 11km south east of Kumbia township). The proposed 275kV line would be located on 60 metre-wide easements or offset by 40m from existing transmission lines if co-located within an existing transmission line corridor.

The existing transmission network in the area includes a 132kV transmission line between Tarong Substation and Chinchilla Substation. The existing 132kV line is located on 50 metre-wide easements between the proposed Wambo Wind Farm site and Halys Substation.

### Identifying a corridor for the proposed transmission line

We have prepared a Draft Corridor Selection Report (CSR) which identifies a corridor for the proposed transmission line. The corridor is much wider than the final easements. This is to allow flexibility in the final location of the transmission line, which will be determined following more detailed investigation and consultation with landholders and other stakeholders.

The Draft CSR describes the social, physical and environmental characteristics within the study area, and the suitability of the corridor to accommodate the new transmission line.

The process to develop the Draft CSR included investigations to evaluate the potential social, physical and environmental considerations associated with the proposed connection project, and engagement with landholders and other stakeholders to gain local insights and understand how individual properties are managed.

This is an important early step in our transmission network development process. There will be opportunities for further feedback and submissions as the project develops. Future stages of development such as planning approvals, finalising easements and construction activity will include additional engagement opportunities for landholders and other stakeholders.

The Draft CSR is available at [www.powerlink.com.au/wambo](http://www.powerlink.com.au/wambo).

## Corridor location

We have identified a corridor approximately 50 kilometres in length for the proposed transmission line between Wambo Wind Farm and Halys Substation. Almost the entire length of the corridor follows the existing corridor between the proposed wind farm site and Halys Substation. The 132kV transmission line on this section may need to be replaced in the future to support increased electricity generation in the region.

The Draft CSR recommends the existing easements be replaced with new, wider easements to accommodate the proposed 275kV transmission line. Powerlink will engage with landholders about the process to provide wider easements.

The corridor offers, on balance, the most appropriate location for the proposed transmission line within the broad study area. Predominantly using the existing corridor will minimise potential impacts to landholders, properties and the environment. It also minimises potential land use impacts on mainly grazing and agricultural land.

The corridor crosses the Bunya Highway and Bunya Mountain Roads, and a number of local roads. Existing road crossings and access tracks can be used for the majority of the corridor.

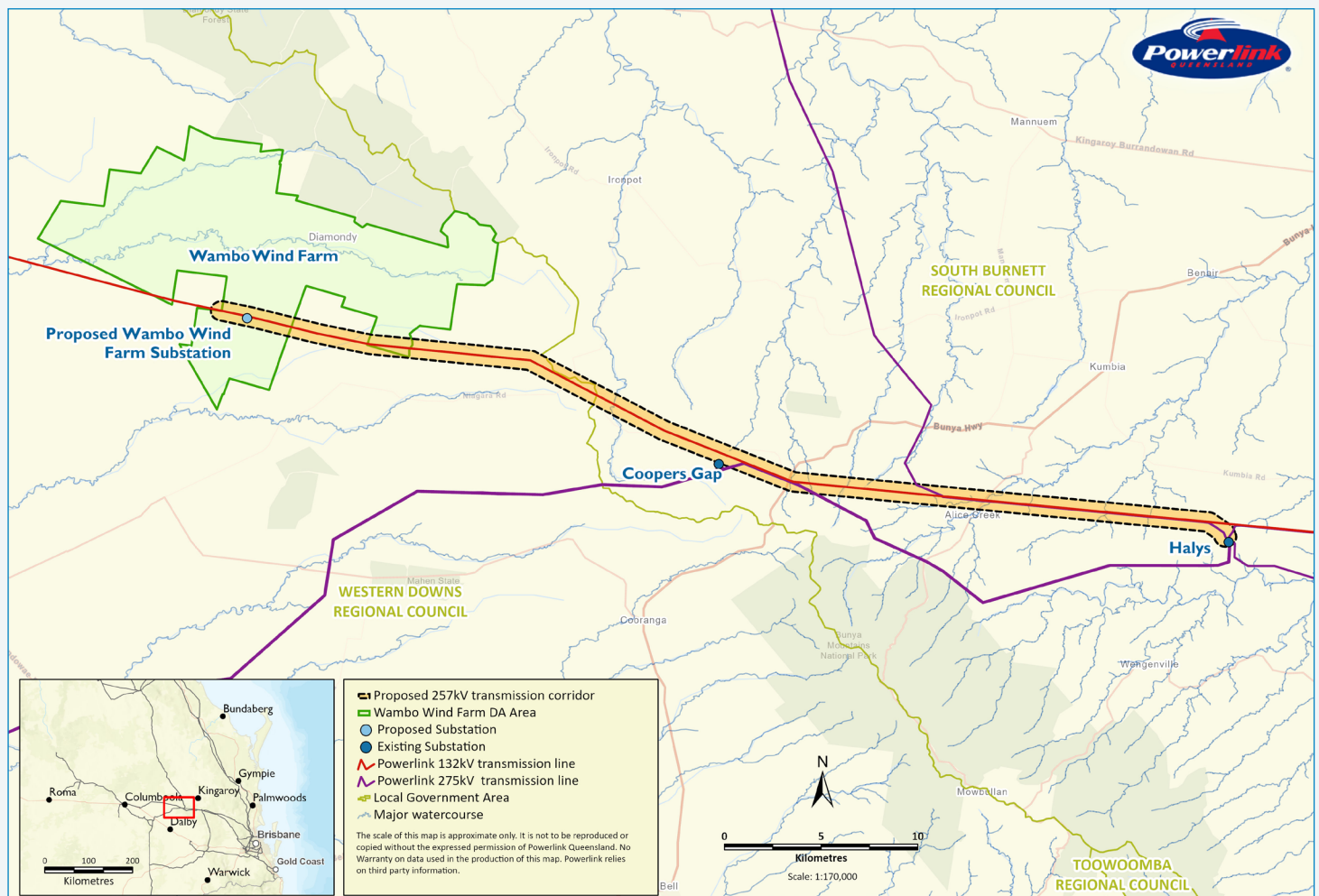
The corridor also ensures the proposed transmission line has adequate clearance to existing and proposed wind turbines.

## Engaging with landholders and other stakeholders

Input and local knowledge from early engagement with landholders and other stakeholders informed the preparation of the Draft CSR. We thank those who participated in our early engagement activities, including face-to-face meetings and community drop-in sessions at Jandowae and Kingaroy in November 2021.

We are committed to ongoing and genuine engagement with landholders and other stakeholders as this connection project progresses.

## Project Map





## Next steps

We are seeking further feedback on the Draft CSR **before 22 April 2022**. There are a number of ways you can share your feedback with us:

### Email

Email us at [wambo@powerlink.com.au](mailto:wambo@powerlink.com.au).

### Phone

If you would like to discuss the Draft CSR or transmission line project more broadly, please contact our Landholder Relations team:

Kyle Hughes

0499 657 403 | [kyle.hughes@powerlink.com.au](mailto:kyle.hughes@powerlink.com.au)

Dave Monaghan

0438 991 126 | [DMonaghan@powerlink.com.au](mailto:DMonaghan@powerlink.com.au)

### Online

Through our interactive mapping tool or project webpage which is available at [www.powerlink.com.au/wambo](http://www.powerlink.com.au/wambo).

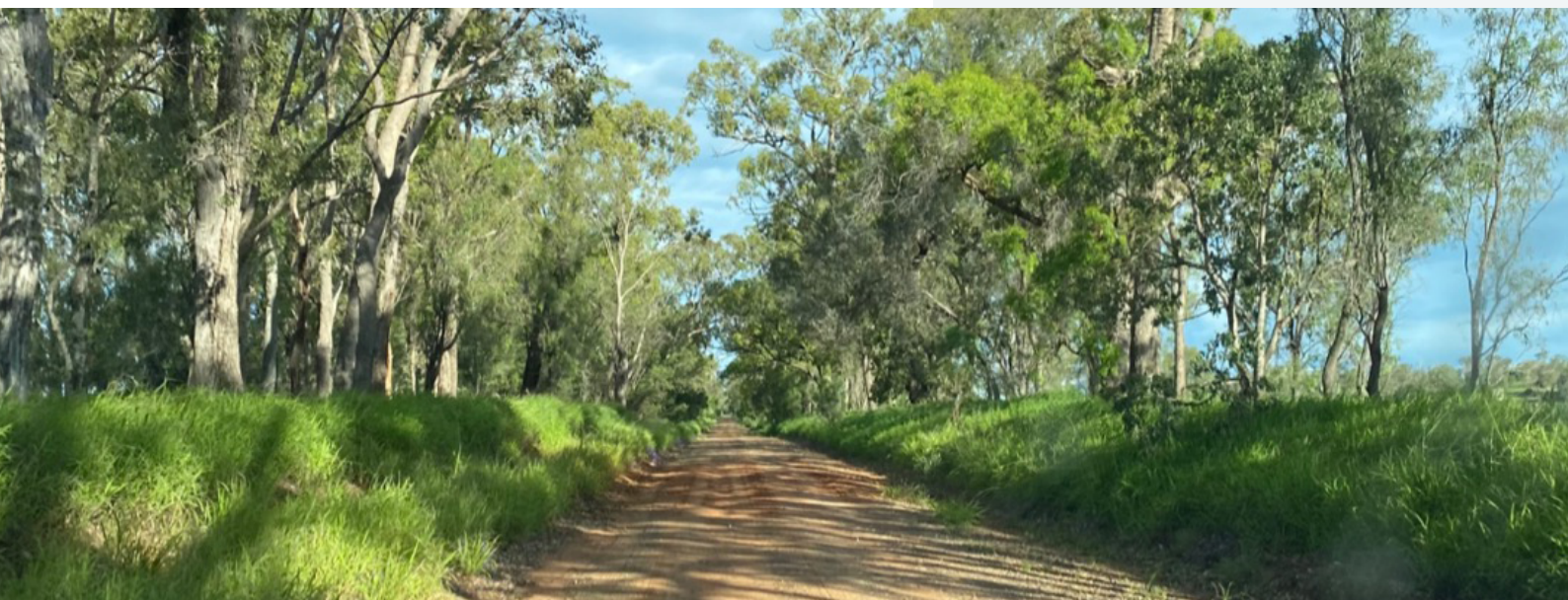
Feedback received will assist in preparation of a Final CSR, which is expected to be released in May 2022.

## About Powerlink

Powerlink Queensland is a Government Owned Corporation that owns, develops, operates and maintains the electricity transmission network in Queensland. We connect Queenslanders to a world-class energy future, providing electricity to five million Queenslanders and 238,000 businesses. We are also responsible for connecting large-scale renewable energy developments, including wind and solar, and providing electricity to large industrial customers in the rail, mining and LNG sectors.

## About the Wambo Wind Farm

The Wambo Wind Farm is a proposed renewable development located near Jandowae, in the Western Downs. The project proposes 250MW of generating capacity, with 42 turbines. When fully operational, the wind farm will have the capacity to produce enough clean energy to power approximately 170,500 houses annually. Visit [wambowindfarm.com.au](http://wambowindfarm.com.au) for more project information.



## Contact Us

General Enquiries 1800 635 369 (during business hours)

[pqenquiries@powerlink.com.au](mailto:pqenquiries@powerlink.com.au)

[www.powerlink.com.au](http://www.powerlink.com.au)



**SAFE FOR LIFE**  
Everyone. Everywhere. Everyday.

## ACKNOWLEDGEMENT

Powerlink acknowledges the Traditional Owners and their custodianship of the lands and waters of Queensland and in particular, the lands on which we operate. We pay our respect to their Ancestors, Elders and knowledge holders and recognise their deep history and ongoing connection to Country.