

# Meandu Mine Transmission Line Relocation Project

## Draft Corridor Selection Report



JULY 2022

### About Powerlink

Powerlink is a leading provider of electricity transmission services, delivering safe, cost effective and reliable network solutions. Our transmission network extends 1,700 kilometres from north of Cairns to the New South Wales border. Our purpose is to connect Queenslanders to a world-class energy future, providing electricity to five million Queenslanders and 238,000 businesses.

### About the King 2 East (K2E Project)

Meandu Mine is an open-cut coal mine in the South Burnett, owned by Stanwell and operated by BUMA Australia, under strict safety and environmental conditions. Located in the South Burnett, the mine supplies black thermal coal to the adjacent Tarong power stations.

The Tarong power stations, which are among the youngest and most reliable generators in the National Electricity Market, will continue to provide a secure supply of electricity as the market transitions towards a lower carbon future. The proposed K2E project will extend the current Meandu Mine by approximately 187 hectares (a seven per cent increase), within the existing mining lease. For more information, visit [www.stanwell.com/meandu-mine-king-2-east-project](http://www.stanwell.com/meandu-mine-king-2-east-project).

### Acknowledgement

Powerlink acknowledges the Traditional Owners and their custodianship of the lands and waters of Queensland and in particular, the lands on which we operate. We pay our respect to their Ancestors, Elders and knowledge holders and recognise their deep history and ongoing connection to Country.

### Key points

- Powerlink has been engaged by Stanwell Corporation Limited to relocate a short section of our existing Tarong to Middle Ridge transmission line to safely accommodate future proposed mining activities at the Meandu Mine.
- Stanwell intends to conduct mining within the current surface rights area located underneath the existing transmission line and is also currently seeking approval to increase the surface rights area of the mine, known as the King 2 East (K2E) project. Stanwell has been engaging with landholders and other stakeholders regarding the proposed K2E project since 2019 and is well-progressed with project approvals.
- This transmission line plays an important role in safely and efficiently transporting electricity generated at the Tarong power stations to the South West Queensland area.
- Powerlink is following a Ministerial Infrastructure Designation approvals process under the *Planning Act 2016* to finalise easement acquisition work to confirm the most appropriate location for this relocated section of transmission line.
- Powerlink has been engaging with Stanwell and other directly affected landholders to examine the most appropriate corridor to relocate this short section (4.6km) of transmission line. The preferred corridor is directly to the east of Stanwell's proposed K2E project to minimise impacts on surrounding landholders and the wider community, and ensure the long-term suitability of transmission infrastructure in the area.
- This preferred corridor will be the subject of further investigation and consultation with landholders and other stakeholders through development of various reports to examine the project in more detail. The first of these reports, the Draft Corridor Selection Report (CSR), has been released for public review and comment.
- The Draft CSR examines the social, physical and environmental characteristics within the project area, and the suitability of relocating this small section of transmission line to minimise impacts to directly affected landholders and the wider community.
- We invite your feedback on the Draft CSR, which can be viewed at [www.powerlink.com.au/meandu](http://www.powerlink.com.au/meandu). Feedback can be provided until close of business on Monday 1 August 2022.
- There will be additional opportunities for further feedback and input as the project progresses. Future stages of development such as formal planning approvals, finalising the alignment within the corridor, finalising easements and construction activity will include further engagement opportunities.



## Preferred corridor for relocated transmission line

Powerlink's existing 275kV Tarong to Middle Ridge transmission line is located immediately east of current mining activities at the Meandu Mine and predominantly within Stanwell's existing surface rights area, which identifies the location of approved mining works. In accordance with their current surface rights area, Stanwell is planning to conduct mining underneath the existing transmission line. Stanwell is also currently finalising approvals to increase the surface rights area of the mine as part of its K2E project.

These future activities require Powerlink to build a new 4.6km section of transmission line to replace the current section of line impacted by this proposed mining activity. The project also includes decommissioning and removing the existing 3.8km section of line.

Following continued collaboration with Stanwell regarding their intended future mining activities, Powerlink is proposing to locate the replacement transmission line section immediately east of the proposed K2E boundary. This ensures the replacement line is as short as possible and minimises impacts to the surrounding area. The proposed corridor maximises the state forest and industrial land uses in the region, with the relocated section of line proposed to traverse around 3.4km of state forest and the remaining 1.2km in land owned by Stanwell.

The proposed corridor is located several kilometres away from the nearest rural residential properties. This section of line is also largely obscured by state forest, which minimises visual amenity impacts for neighbouring properties.

## Have your say on the Draft CSR

The Draft CSR outlines the social, physical and environmental considerations of this project and examines the overall suitability of relocating this small section of transmission line to minimise impacts to landholders and the wider community. The report explores a range of potential transmission line corridors and provides a recommendation on the proposed corridor.

In addition to early engagement with landholders and other stakeholders, the Draft CSR was informed by a range of desktop and field assessments, including third party ecological advice to assess potential environmental impacts and geotechnical surveys to better understand on-ground technicalities and construction methods.

We welcome feedback on the Draft CSR from anyone with an interest by close of business on Monday 1 August 2022. Please provide your feedback on the document directly to the Powerlink representative listed on the back page of this newsletter. All feedback received on the Draft CSR will be considered and a response provided. Your insights will help inform the Final CSR, which is expected to be released in coming weeks.

## Project timings

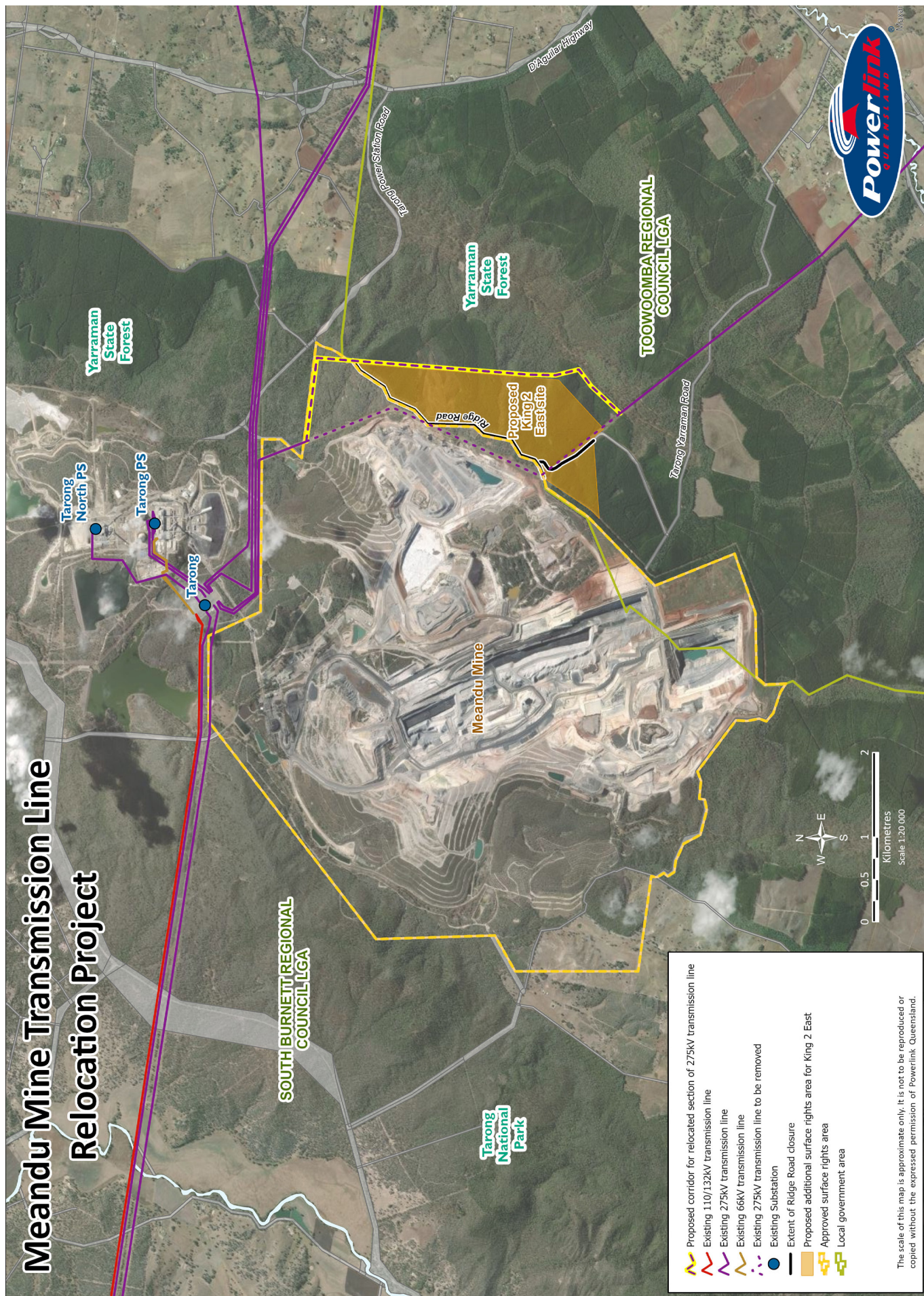
Following release of the Final CSR, Powerlink will start preparing an Environmental Assessment Report (EAR). This will be released as part of the broader Ministerial Infrastructure Designation process under the *Planning Act 2016*. The EAR will comprehensively examine the potential environmental, social and economic impacts of the proposed infrastructure and outline the actions required to manage and/or mitigate these impacts. The report will consider these factors together to identify a draft alignment for the proposed relocated transmission line section based on the lowest overall impact.

We currently expect the EAR will be released by the Planning Minister for public consultation in Q3 2022. No decision will be made about the final alignment for the replacement section of transmission line until planning approval is granted by the Planning Minister. Powerlink is aiming to finalise planning approval by late 2022, with construction expected to commence in December 2022. We anticipate commissioning of the new line will occur by December 2023, ahead of Stanwell commencing mining operations for the K2E project during 2024.





# Meandu Mine Transmission Line Relocation Project





## Minimising traffic impacts during construction

We are mindful that traffic impacts during construction works will be an important aspect of safely and efficiently delivering this project, particularly for the wider community. At all times we aim to conduct our activities with as little disruption as possible to landholders and the community. A detailed Traffic Management Plan will be developed prior to construction commencing. Construction traffic will include regional and local movement of materials, equipment and construction personnel. Most heavy vehicles associated with the project will travel along the D'Aguilar Highway and Tarong Yarraman Road.

It is also important to note that Ridge Road in Yarraman will be closed as part of the K2E project. Stanwell is managing the road's permanent closure in the longer term while Powerlink will facilitate temporary closures during construction. More information on local traffic management requirements will be provided to landholders and other stakeholders closer to the project's construction phase.

## Next steps


- 1 Powerlink's Project Team will contact directly affected landholders to discuss the Draft CSR and seek their input.
- 2 All feedback received on the Draft CSR will be considered in detail and inform development of the Final CSR.
- 3 Preparatory work will continue on production of the EAR to formally seek planning approval for the project.
- 4 Powerlink will continue to engage with landholders and other stakeholders as the project progresses.



## Further information

For more information on the Meandu Mine Transmission Line Relocation Project, please contact:

**Brian Gover**  
Property Project Manager  
Powerlink  
Ph: 07 3860 2235  
Email: [brian.gover@powerlink.com.au](mailto:brian.gover@powerlink.com.au)

 FREECALL: 1800 635 369  
(business hours)

 [projects@powerlink.com.au](mailto:projects@powerlink.com.au)

 [www.powerlink.com.au/meandu](http://www.powerlink.com.au/meandu)

 Connect:    



**SAFE FOR LIFE**  
Everyone. Everywhere. Everyday.