

CopperString 2032

POWERLINK QUEENSLAND

About Powerlink

Powerlink is a Queensland Government Owned Corporation playing a central role in the energy transition. We are a leading provider of electricity transmission services, delivering a safe, cost effective and reliable transmission network for Queenslanders.

We own, develop, operate and maintain the electricity transmission network in Queensland which extends 1,700 kilometres from north of Cairns to the New South Wales border.

Our purpose is to connect Queensland to a world-class energy future, providing electricity to more than five million Queenslanders and 253,000 businesses. We are also responsible for connecting large-scale renewable energy developments, including wind and solar, and providing electricity to large industrial customers in the rail, mining and LNG sectors.

CopperString 2032 is the largest ever economic development project in North Queensland and the largest expansion to the power grid in Australia

Led by Powerlink, the project initially involves building 840km of new electricity transmission line from just south of Townsville in the Burdekin region to Mount Isa that will connect the North West Minerals Province to the National Electricity Market for the first time in Australia's history. Approximately 200km of additional transmission line will also be required to connect new renewable generators to CopperString 2032.

The project includes:

- 500 kilovolt (kV) transmission line from just south of Townsville to Hughenden
- 330kV transmission line from Hughenden to Cloncurry
- 220kV transmission line from Cloncurry to Mount Isa
- up to six new substation sites
- workforce accommodation and facilities in strategic locations along the corridor.

In October 2023, the Queensland Government announced \$1.3 billion to advance the construction of CopperString 2032. This funding will help get the project ready for construction to commence in mid-2024. The project is expected to be completed by 2029.

Powerlink acknowledges the Traditional Owners and their custodianship of the lands and waters of Queensland and in particular, the lands on which we operate. We pay our respect to their Ancestors, Elders and knowledge holders and recognise their deep history and ongoing connection to Country.

Freecall 1800 635 369
powerlink.com.au/copperstring2032





When will construction begin?

We are continuing to work alongside the State and Federal Governments to progress project approvals. At the same time, work is continuing on field and geotechnical investigations, cultural heritage and ecological surveys, community engagement and landholder consultation.

Due to the size and scope of CopperString 2032, project construction will be staged across multiple locations to ensure safe travel distances for workers and timely project delivery.

Construction of the Hughenden workforce accommodation is expected to begin in mid-2024 followed by Richmond.

Workforce accommodation will also be built in Julia Creek, Mount Isa, Charters Towers and Pentland. Timing for the construction of these facilities will be finalised as the project progresses.

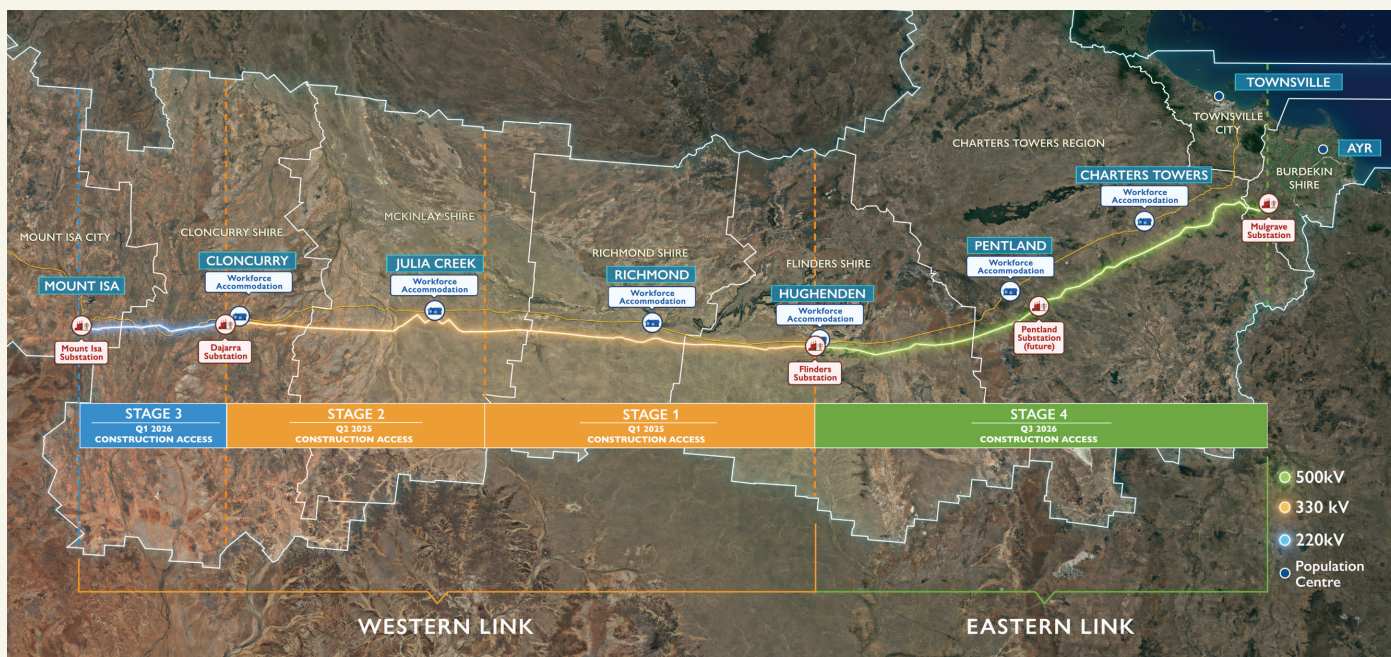
The first section of new 330kV transmission line will be built between Hughenden and Cloncurry and is expected to start in early 2025.

We will then continue to move west to Mount Isa with the construction of the 220kV transmission line.

The eastern link is expected to begin in late 2026 with the construction of the 500kV transmission line from Hughenden to the Burdekin region south of Townsville.

The construction program will allow the team to start work on the shovel-ready sections of the project.

Other sections that may require further detailed design or approvals will be built during later stages of the project.



Project approvals

Since Powerlink took over the project in March 2023, the transmission line design and supporting infrastructure have been refined. As a result, the project’s existing environmental approvals may need to be reviewed.

Significant work is currently underway to support the project’s final statutory approvals.

We anticipate preparatory infrastructure, including workforce accommodation and facilities in Hughenden and Richmond, will be assessed by the Queensland Coordinator-General and progressed under a works regulation amendment.

This will be followed by State and Federal Government’s assessment of the transmission infrastructure and remaining workforce accommodation and facilities in stages one to four outlined in the map below.

Following statutory approval of each stage, it is expected that additional planning and approvals for the delivery of CopperString 2032 will proceed via the Queensland Minister for State Development and Infrastructure under the Ministerial Infrastructure Designation (MID) process.

We expect to lodge several MID proposals and have undertaken preliminary engagement with impacted landholders, communities and other stakeholders to ensure anyone with an interest in the project is given an opportunity to provide initial feedback before proposals are lodged.

Following lodgement of each MID proposal, the Minister for State Development and Infrastructure will initiate consultation by writing to relevant local governments and impacted landholders to invite submissions.

Expanded connection

CopperString 2032 includes an increased transmission capacity of 500kV (from 330kV) for the section of line from just south of Townsville to Hughenden to unlock Queensland’s renewable superpower – the Flinders Renewable Energy Zone. This zone has the potential to be one of the largest renewable energy zones in Australia.

North West Minerals Province ↔ Flinders Renewable Energy Zone ↔ National Electricity Market

~**840km** of transmission line from just south of Townsville in the Burdekin region to Mount Isa



~**200km** of additional transmission line to connect new renewable generators



>800 direct jobs supported during construction with ongoing jobs during operations and maintenance



Approximately **2,200** tower structures



Tower height approximately **80m**



~**75,000** tonnes of steel

(Sydney Harbour Bridge = 52,800 tonnes)



~**75,000** tonnes of concrete



Up to **six** new substation sites

CONDUCTORS **18,600km**

OPGW **2,200km**



KEY TOWNSHIPS

HUGHENDEN

TOWNSVILLE

RICHMOND

CHARTERS TOWERS

JULIA CREEK

PENTLAND

CLONCURRY

AYR

MOUNT ISA

Subject to project finalisation

Get involved

CopperString 2032 is not just about building a transmission line. We're looking to enhance the lives and livelihoods of the people in these local communities and enable economic and environmental outcomes. We want to leave a positive legacy along this important corridor of the future.

We are committed to ongoing genuine and timely engagement to ensure we deliver positive outcomes for landholders, stakeholders, the environment and local communities where our transmission infrastructure is located.

We value our relationship with local and Indigenous suppliers, and we will work with our construction contractor, the UGL CPB Contractors Joint Venture, to ensure full, fair and reasonable opportunities are available on the project.

To learn more, contact our project team on 1800 635 369 or email copperstring2032@powerlink.com.au www.powerlink.com.au/copperstring2032.

Further information

Powerlink is committed to ongoing genuine and timely engagement to ensure we deliver positive outcomes for landholders, stakeholders, the environment and local communities where our transmission infrastructure is located.

To learn more about CopperString 2032, contact the project team on 1800 635 369 or copperstring2032@powerlink.com.au.

Use the QR code to access our project webpage or visit powerlink.com.au/copperstring2032



COPPERSTRING 2032