

Calvale to Calliope River Transmission Line Reinforcement Project

POWERLINK QUEENSLAND

About the project

Powerlink is planning a new transmission line between the Calvale Substation (near Callide Power Station) and the Calliope River Substation (near Gladstone).

The project will reinforce electricity supply and ensure more renewable energy can flow into the wider Gladstone region.

At 87km long, the new double circuit 275kV transmission line will mostly be constructed in existing spare easements, co-located beside existing 275kV transmission lines. However, there is around 16km between Bracewell and East End, and approximately 450m on the approach into the Calvale Substation, where easement widening is required.

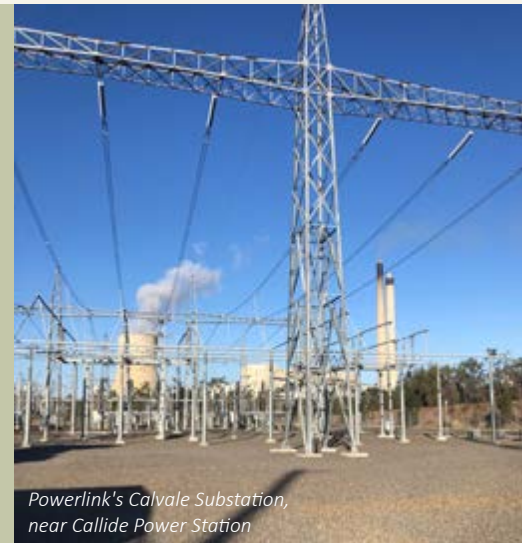
Since our previous update in August 2024, design works have progressed and there has been a minor change to the easement alignment on the approach into the Calvale Substation. This was necessary due to technical design requirements.

Substation upgrade works

Connecting the new 275kV high capacity transmission line to our electricity network will require upgrading and expansion of both Calvale and Calliope River substations. Works at the Calvale Substation will include upgrading existing and installing new equipment within the existing substation site.

At the Calliope River Substation, works will include installing a new transformer and expanding the 275kV and 132kV bays.

We will also undertake works to reinstate any areas that have been disturbed that are outside of the infrastructure footprint in line with environmental and safety requirements.



Powerlink's Calvale Substation, near Callide Power Station

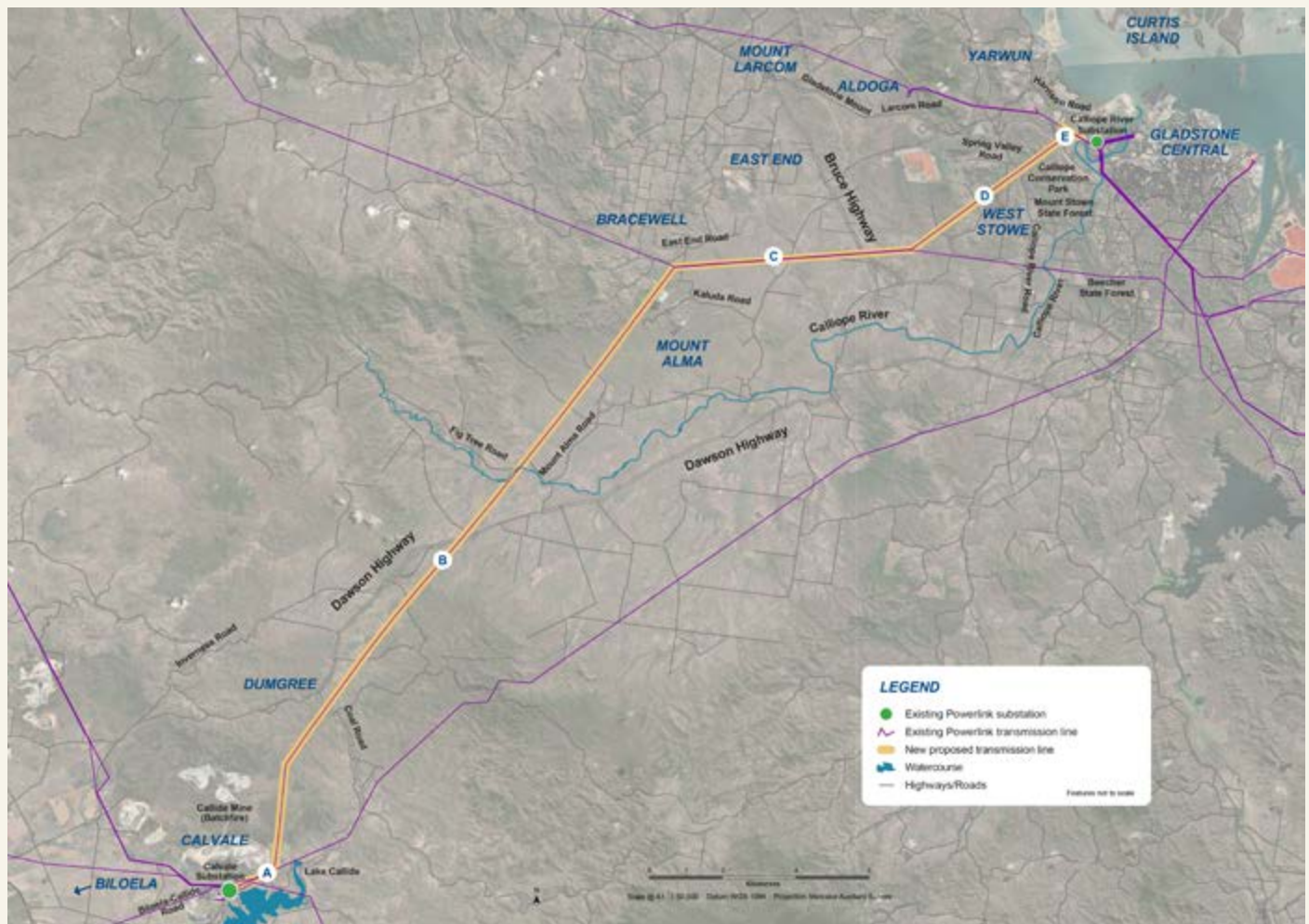
Powerlink acknowledges the Traditional Owners and their custodianship of the lands and waters of Queensland and in particular, the lands on which we operate. We pay our respect to their Ancestors, Elders and knowledge holders and recognise their deep history and ongoing connection to Country.



powerlink.com.au/calvale-calliope



SAFE FOR LIFE
Everyone. Everywhere. Everyday.



Geotechnical works to inform planning and design

Starting from April 2025, geotechnical investigations will begin at Calliope River Substation and then along the easement alignment, following appropriate measures to protect cultural heritage values in the area. These early works will help to inform our planning and assessment activities. Main construction works for the transmission line are expected to start in mid-2026. However this will depend on the progress and outcome of the formal approval process, which is currently underway.

Geotechnical works involve collecting soil samples to help us understand soil type and other ground components. This informs the engineering design and construction methodology. Powerlink has engaged CMW Rockhampton to carry out the geotechnical investigations at the substation, and Civil Group Australia to undertake specialist drilling along the easement alignment. Early works are expected to take several months to complete, weather and site conditions permitting.

powerlink.com.au/calvale-calliope



SAFE FOR LIFE
Everyone. Everywhere. Everyday.

Environment and planning approvals update

State Government planning approval

Powerlink is seeking planning approval from the Queensland Government. This process is managed by the Department of State Development, Infrastructure and Planning (DSDIP) with input from other government agencies.

We are currently preparing the detailed reports that comprise our application for planning approval. This includes reports that look at the possible environmental, social and economic impacts of building, operating and maintaining the project, and suggests ways to manage these impacts. It describes in detail the findings of more than 18 months of desktop and detailed flora and fauna field studies, and social and cultural heritage assessments.

Our application also includes reports that detail the findings and proposed mitigations for other matters, including construction traffic impacts, noise and vibration, landscape and visual amenity, bushfire risks and more.

Upcoming consultation

We expect to lodge our application for planning approval with DSDIP in mid 2025. When ready, the Planning Minister will initiate a 20 business day public consultation period for the project.

This consultation is initiated by DSDIP and will be supported by Powerlink engagement activities. Formal submissions must be made to the Planning Minister in writing and can relate to any of the topics covered in the application.

At this time, we will inform landholders, Traditional Owner groups and the community about how to access the documentation, ask questions and make a submission.

We will also be holding community information drop-in sessions at multiple locations along the project alignment.

Please visit powerlink.com.au/calvale-calliope to register for updates.

powerlink.com.au/calvale-calliope



Federal Government environmental approval

Powerlink takes our environmental responsibilities seriously and we are committed to managing potential environmental impacts resulting from our proposed activities for this project.

In November 2024, Powerlink referred the project to the Department of Climate Change, Energy, the Environment and Water (DCCEEW) for assessment under the *Environment Protection and Biodiversity Conservation Act 1999* (the EPBC Act).

DCCEEW has reviewed Powerlink's referral documentation and public submissions made during initial consultation in January 2025, and has classified the project as a 'Controlled Action'. This means the project requires Commonwealth approval under the EPBC Act, in addition to Queensland Government approvals, which are progressing separately.

Powerlink will now prepare a Public Environment Report, which will be made available for public consultation later this year. This process is managed by DCCEEW.

Project timeline

- **Early 2023**
Early stakeholder engagement
- **June-July 2024**
Consultation on Draft Corridor Selection Report
- **August 2024**
Final Corridor Selection Report published
- **January 2025**
Community consultation on EPBC Act Referral
- **WE ARE HERE**
Preparing for environment and planning approvals
- **Mid 2025**
Environmental field studies complete
Community consultation on application for planning approval (State Government level approval)
- **Late 2025**
Community consultation on Public Environment Report (Federal Government level approval)
- **Mid 2026**
Planning and approvals complete
Start of construction
- **2028**
Construction complete – start of operations

Gladstone Project

The Calvale to Calliope River Transmission Line Reinforcement Project is the first stage in a broader program of transmission upgrades that is expected to see several projects planned, assessed and delivered in stages over the next decade.

The broader Gladstone Project is in the early stages of planning. As planning progresses, Powerlink will engage with landholders, Traditional Owner groups, the community and other stakeholders, and seek their input.

Supplier Expressions of Interest for the Gladstone Project

Powerlink is calling for suppliers in the Gladstone region and surrounds to register their interest in providing goods and services for a program of transmission upgrades being planned.

This is part of early market testing and will contribute to developing a supplier register to be provided to the main works contractors, once appointed. While Powerlink will be procuring specialist technical items, most procurement will occur through the main works contractors.

More than 50 work packages are open for registration until 30 April 2025. All EOIs must be made through the project's ICN Gateway page.

Visit <https://thegladstoneproject.icn.org.au> for further detail, and the latest project procurement information.

Further information

If you have any questions about the Calvale to Calliope River Transmission Line Reinforcement Project please contact us by:

- completing the contact form on the project webpage by scanning the QR code, or visiting powerlink.com.au/calvale-calliope
- emailing cqprojects@powerlink.com.au
- phoning 1800 635 369 (Monday to Friday, 7.30am – 5.00pm).



Landholders along the corridor are also welcome to contact their Landholder Relations Advisor.



About Powerlink Queensland

Powerlink is a Government Owned Corporation that owns, develops, operates and maintains the transmission network in Queensland.

We connect Queenslanders to a world-class energy future, providing electricity to more than five million Queenslanders and 241,000 businesses.

We are also responsible for connecting large-scale renewable energy developments, including wind and solar, and providing electricity to large industrial customers in the rail, mining and LNG sectors.