

Bouldercombe to Larcom Creek Transmission Line Reinforcement Project

POWERLINK QUEENSLAND

About the project

Powerlink is planning to reinforce the high voltage transmission connection between our existing Bouldercombe and Larcom Creek substations. The new transmission line will reinforce electricity supply to the Gladstone region, and increase network capacity and reliability to support:

- increased demand for electricity from local industry who are decarbonising
- additional energy that will be produced by new energy generators
- eventual retirement of the Gladstone Power Station.

Existing easements will be used where possible to lessen impacts of this reinforcement project.

This project is made up of four sections (A, B, C and D). In sections A and B one new 275kV transmission line is required to be developed. In section C and D one new 275kV line is required to be developed, as well as exploring options for additional easement width to accommodate future transmission lines.

A map is provided inside this newsletter to show where these sections span, as well as existing easements, and areas where easement widening and new easements may be required.

Part of the Gladstone Project

The Bouldercombe to Larcom Creek Transmission Line Reinforcement Project will be delivered as part of Powerlink's Gladstone Project.

For information on the Gladstone Project please visit www.powerlink.com.au/projects/gladstone-project



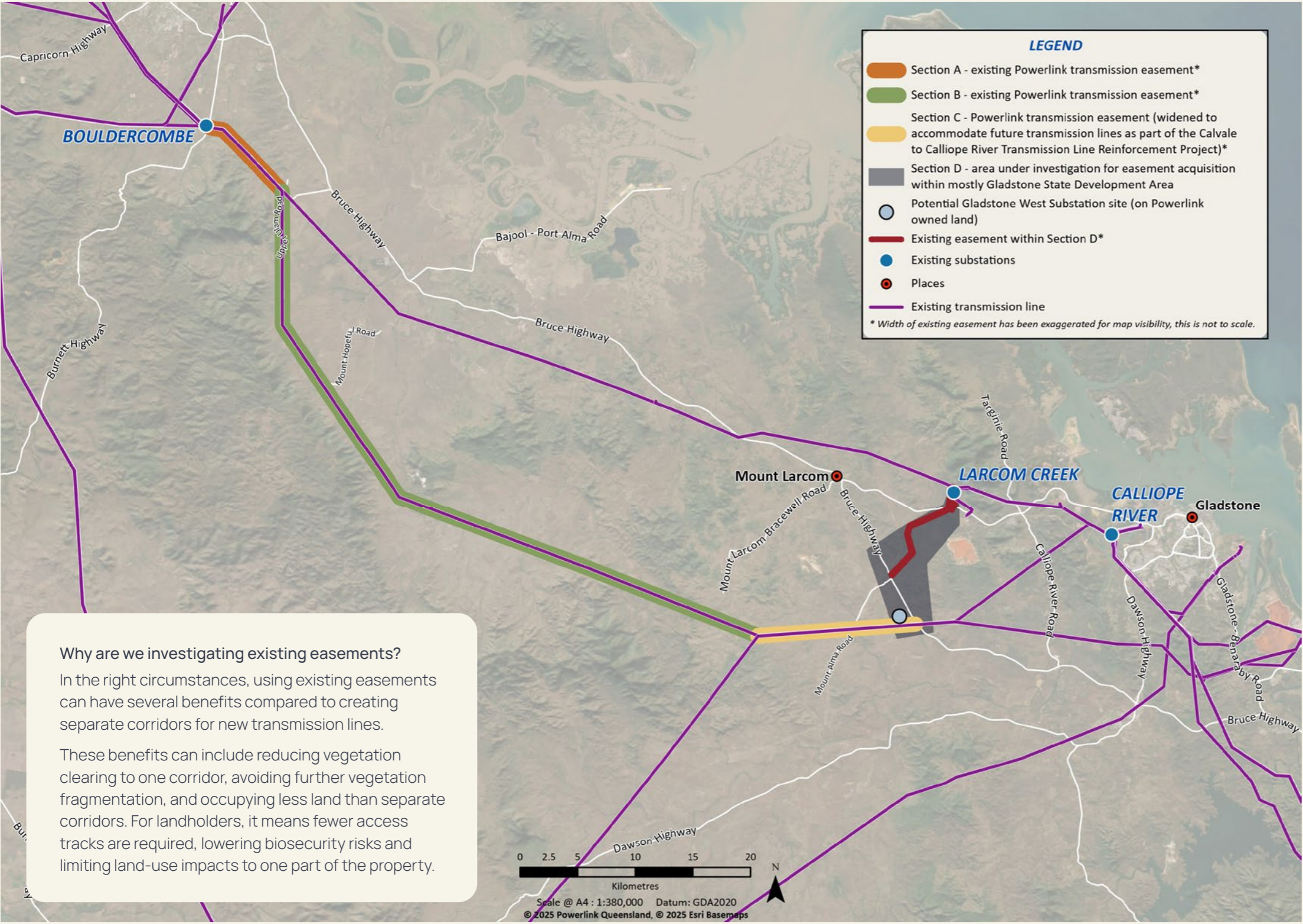
Powerlink acknowledges the Traditional Owners and their custodianship of the lands and waters of Queensland and in particular, the lands on which we operate. We pay our respect to their Ancestors, Elders and knowledge holders and recognise their deep history and ongoing connection to Country.



powerlink.com.au/projects



SAFE FOR LIFE
Everyone. Everywhere. Everyday.



Section A (approximately 9km long)

The project will assess the suitability of utilising the existing easement for an additional 275kV overhead transmission line.

This section currently contains two existing 275kV transmission lines which are centrally located within a 180m wide easement.

Section B (approximately 60km long)

The project will assess the suitability of utilising the existing easement for an additional 275kV overhead transmission line.

This section currently contains one 275kV transmission line located on the eastern side of an existing 100m wide easement.

Section C (approximately 11km long)

This section includes two 275kV transmission lines, which are both located within an existing 100m wide easement. This corridor will be widened by an additional 40m to the north for the Calvale to Calliope River Transmission Line Reinforcement (C2C) project, which will comprise the construction of one 275kV transmission line. A 135m wide corridor to the north of the C2C project has been identified for investigation for this project.

The project will assess the suitability of constructing another 275kV transmission line, and securing additional width for future transmission lines.

Section D (approximately 15km long)

The project will assess the suitability for a 275kV transmission line between the potential Gladstone West Substation site (on Powerlink owned land) and the existing Larcreek Substation. It will also explore options for additional width to accommodate future transmission lines.

Powerlink has an existing vacant easement that is approximately 10km in length in this area.

Tower heights

Where there are existing towers, new towers are likely to stand approximately 20m taller than the existing. The final tower height is dependent on electrical safety and design standards, vegetation, Cultural Heritage findings, topography and terrain conditions.

Indicative project timeline



Powerlink is working with the relevant Federal and State government departments to determine the appropriate planning and environmental approvals pathway for this project. Formal consultation will be undertaken in line with the appropriate pathways.

Have your say

Powerlink has been undertaking corridor investigations to support the project. These investigations will be published on our website in the coming months.

This will include:

1. Corridor Validation Summary (Sections A-C): This will explore the feasibility of using Powerlink's existing easements and easement widening where required to build the transmission line for this project.

2. Corridor Report (Section D): This will outline the most feasible preferred corridor location for this section of the project with regards to social, environmental and economic factors relevant to the area.

Powerlink will be hosting community information drop-in sessions upon the release of these reports.

If you would like to be notified when the reports are published, please email cqprojects@powerlink.com.au with the subject line "subscribe for Bouldercombe to Larcom Creek project updates".

There will be opportunities to provide feedback regarding the project, including formal consultation periods as part of our project approval process, community information sessions, email, and via our project website.

Activities to date

Powerlink has been undertaking early desktop and field studies (such as ecological studies) to inform the project's feasibility and approval pathway.

Powerlink has also introduced the project to directly impacted and adjacent landholders, Traditional Owner groups, local councils and elected representatives to understand any potential impacts and opportunities.

Project approvals

Powerlink is working with the relevant Federal and State government departments regarding the appropriate planning and environmental approvals pathway for this project. We will continue engaging with landholders, Traditional Owners, the wider community and other stakeholders as planning progresses.

General information pop-ups

Powerlink will be visiting the following locations to answer questions about our work in the region. We look forward to meeting with you.

Thursday 31 July 2025, 5pm-8pm
Bouldercombe Sport and Recreation Complex
52496 Burnett Highway, Bouldercombe

Thursday 31 July 2025, 4pm-9pm
Gladstone Centre Plaza – Opposite Williams
Corner of Dawson Highway and Philip Street,
West Gladstone

Saturday 2 August 2025, 8am-12pm
Stockland Rockhampton Shopping Centre – In front
of Coffee Club
120-331 Yaamba Road, North Rockhampton

Saturday 2 August 2025, 8am-12pm
Outside of FoodWorks
Shop 2 25/27 Dawson Highway, Biloela

Contact us

If you have any questions about this project, or would like to register to receive links to the project reports when they are available, please contact us by:

- visiting our project webpage and completing a feedback form
- emailing cqprojects@powerlink.com.au
- phoning 1800 635 369 (Monday to Friday, 7.30am – 5pm)