

# Banana Range Wind Farm Connection Project

## POWERLINK QUEENSLAND

### About the project

Powerlink Queensland is continuing to progress works to deliver a transmission line, approximately 44km in length, to connect the Banana Range Wind Farm (BRWF) to the transmission network. The BRWF is a renewable energy development planned by EDF Renewables Australia.

The BRWF Connection Project involves:

- constructing a new 275kV transmission line from the BRWF site at the northern foothills of the Banana Range (about 20km west of Biloela), to Powerlink's existing Calvale Substation, near Callide Power Station
- building a new substation at the BRWF site
- expansion works around the existing Calvale Substation.

Further information about previous engagement and how the project's final corridor was determined is available on our project webpage – [powerlink.com.au/bananarange](https://powerlink.com.au/bananarange).

### Environment and planning approvals

Powerlink is progressing the project's formal environment and planning approvals process.

The BRWF Connection Project requires both Federal and Queensland Government approvals which are being progressed concurrently.

The approvals process will involve formal public consultation periods and landholders, Traditional Owner groups, the community and other stakeholders will be invited to provide feedback.

#### Federal Government environmental approval

The project will be referred to the Department of Climate Change, Energy, the Environment and Water (DCCEEW) for assessment under the *Environment Protection and Biodiversity Conservation Act 1999* (the EPBC Act).

Powerlink is planning to submit the referral in **September 2025**. The public consultation period will be initiated and managed by DCCEEW.

The EPBC Act is Australia's national environmental law, and it protects and manages Australia's 'nationally significant' animals, plants, habitats and places.

#### State Government planning approval

Powerlink is seeking planning approval from the Queensland Government, under the Ministerial Infrastructure Designation (MID) process. This process is managed by the Department of State Development, Infrastructure and Planning (DSDIP) with input from other government agencies.

The Project's MID Proposal Report is scheduled to be lodged with DSDIP in **September 2025**. The public consultation period will be initiated by DSDIP and supported by Powerlink engagement activities.

The MID Proposal Report will examine the potential environmental, social and economic impacts of building, operating and maintaining the project, and outline ways to manage these impacts.

We are committed to keeping landholders, Traditional Owner groups, the local community and other stakeholders updated on the project's approval processes, timings and opportunities to provide feedback.

*Powerlink acknowledges the Traditional Owners and their custodianship of the lands and waters of Queensland and in particular, the lands on which we operate. We pay our respect to their Ancestors, Elders and knowledge holders and recognise their deep history and ongoing connection to Country.*



[powerlink.com.au/bananarange](https://powerlink.com.au/bananarange)



**SAFE FOR LIFE**  
Everyone. Everywhere. Everyday.

## Key project features

### Transmission lines

The final alignment prioritises co-location, which involves building transmission lines side-by-side. Around 45 percent of the new line is co-located with existing transmission infrastructure.

- 13km of the transmission line is co-located with the existing Moura line, before changing direction to the north. This is to avoid impacting many smaller properties close to town that have been built since the Moura line was constructed in the 1970s.
- 24km of the transmission line heads north-east, following property boundaries where possible. This is to reduce impacts on property usage, compared to taking the shortest, most direct route.
- 7km of the transmission line is co-located with the existing Calvale to Baralaba line, before going around Batchfire Callide Mine to the south, and connecting with Powerlink's Calvale Substation.

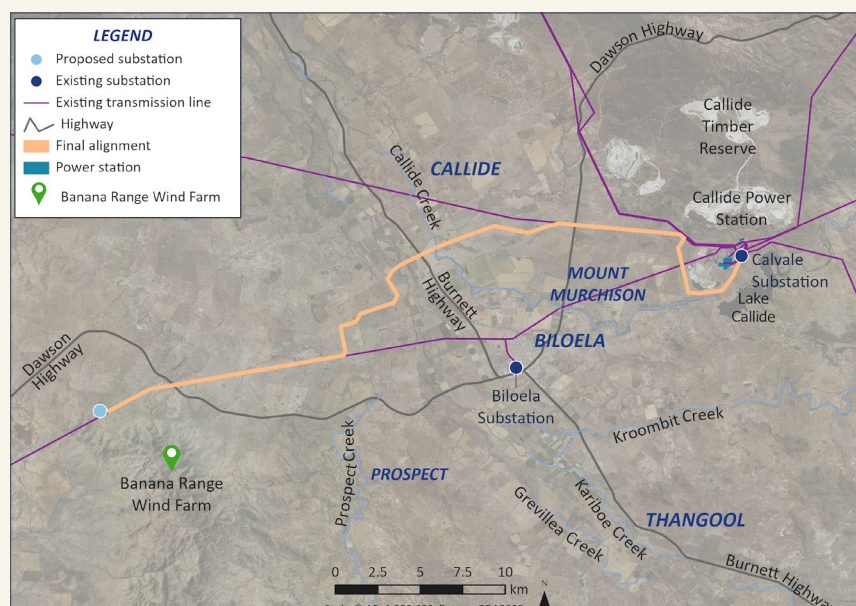
### Easements

Powerlink has worked with landholders to find an alignment that enables greater coexistence with property uses and our infrastructure.

- 60m wide easement alignment in greenfield areas.
- 40m wide easement alignment where co-location is planned with existing transmission lines.

### Substation

- New substation at the Banana Range Wind Farm site.
- Expansion works around the existing Calvale Substation.



Banana Range Wind Farm Connection Project

## About Powerlink Queensland

Powerlink is a Government Owned Corporation that owns, develops, operates and maintains the transmission network in Queensland. We connect Queenslanders to a world-class energy future, providing electricity to more than five million Queenslanders and 241,000 businesses.

We are also responsible for connecting large-scale and renewable energy developments, including wind and solar, and providing electricity to large industrial customers in the rail, mining and LNG sectors.

[powerlink.com.au/banalarange](https://powerlink.com.au/banalarange)



## Contact us

If you have any general questions about the connection project please contact our project team by calling 1800 635 369 (Monday to Friday, 7.30am – 5pm), or emailing [cqprojects@powerlink.com.au](mailto:cqprojects@powerlink.com.au).

Landholders along and directly adjacent to the final corridor are welcome to contact our Landholder Relations Team by calling 1800 635 369, or emailing [landholderrelations@powerlink.com.au](mailto:landholderrelations@powerlink.com.au).

Please scan the QR code or visit [powerlink.com.au/banalarange](https://powerlink.com.au/banalarange) to access our project web page.



For enquiries about the Banana Range Wind Farm Project, please contact EDF Renewables on [bananarangewindfarm@edf-re.com.au](mailto:bananarangewindfarm@edf-re.com.au). You can register to receive their email updates at [bananarangewindfarm.com.au](https://bananarangewindfarm.com.au).



**SAFE FOR LIFE**  
Everyone. Everywhere. Everyday.