

# Theodore Wind Farm Connection Project

POWERLINK QUEENSLAND

## About the project

The Theodore Wind Farm Connection Project is currently in the planning stage. Powerlink has been engaged by RWE Renewables Australia (RWE) to connect their proposed Theodore Wind Farm to the electricity grid. This work includes selecting and finalising the location of a new double circuit 275kV transmission line corridor and easement alignment, seeking required approvals, and building and maintaining the line if it is approved.

## Latest update

As part of the Theodore Wind Farm Connection Project, Powerlink will also seek the necessary planning and environmental approvals for the design and construction of a substation within the wind farm boundary, referred to as Castle Creek Substation.

The selection of the Castle Creek Substation site was confirmed with key input provided from RWE to ensure the substation was appropriately integrated with RWE's wind farm infrastructure. The same criteria used for corridor selection - social, environmental and economic values - were applied when selecting the new substation location.

The name 'Castle Creek' was selected to recognise the Theodore township, which was originally known as Castle Creek.

*Powerlink acknowledges the Traditional Owners and their custodianship of the lands and waters of Queensland and in particular, the lands on which we operate. We pay our respect to their Ancestors, Elders and knowledge holders and recognise their deep history and ongoing connection to Country.*



[powerlink.com.au/theodore](https://powerlink.com.au/theodore)



**SAFE FOR LIFE**  
Everyone. Everywhere. Everyday.





*The Boulevard, Theodore.*

## Environmental and planning approvals

### State Government planning approvals

Powerlink will be seeking planning approval from the Queensland Government through the Ministerial Infrastructure Designation (MID) process. This process is managed by the Department of State Development, Infrastructure and Planning (DSDIP) with input from other government agencies.

Powerlink is currently preparing detailed reports as part of our application for planning approval. These reports examine the potential environmental, social and economic impacts of construction, operation and maintenance, along with measures to manage these impacts.

We expect to lodge our application for planning approval with DSDIP in Q3 2025. Following lodgement, a public consultation period of 20 business days will be initiated for the project, which is expected to occur in Q4 2025.

The consultation will be initiated by DSDIP and will be supported by Powerlink engagement activities on our planning and environmental approvals. Formal submissions must be submitted in writing and can address any of the topics covered in the application. Landholders, Traditional Owner groups, the community and other stakeholders will be informed on how to access this documentation, ask questions and make a submission.

### Federal Government environmental approvals

Powerlink takes our environmental responsibilities seriously. We are committed to managing potential environmental impacts resulting from our proposed activities for this project.

In Q3 2025, Powerlink is aiming to refer the project to the Department of Climate Change, Energy, the Environment and Water (DCCEEW) for assessment under the *Environment Protection and Biodiversity Conservation Act 1999* (the EPBC Act).

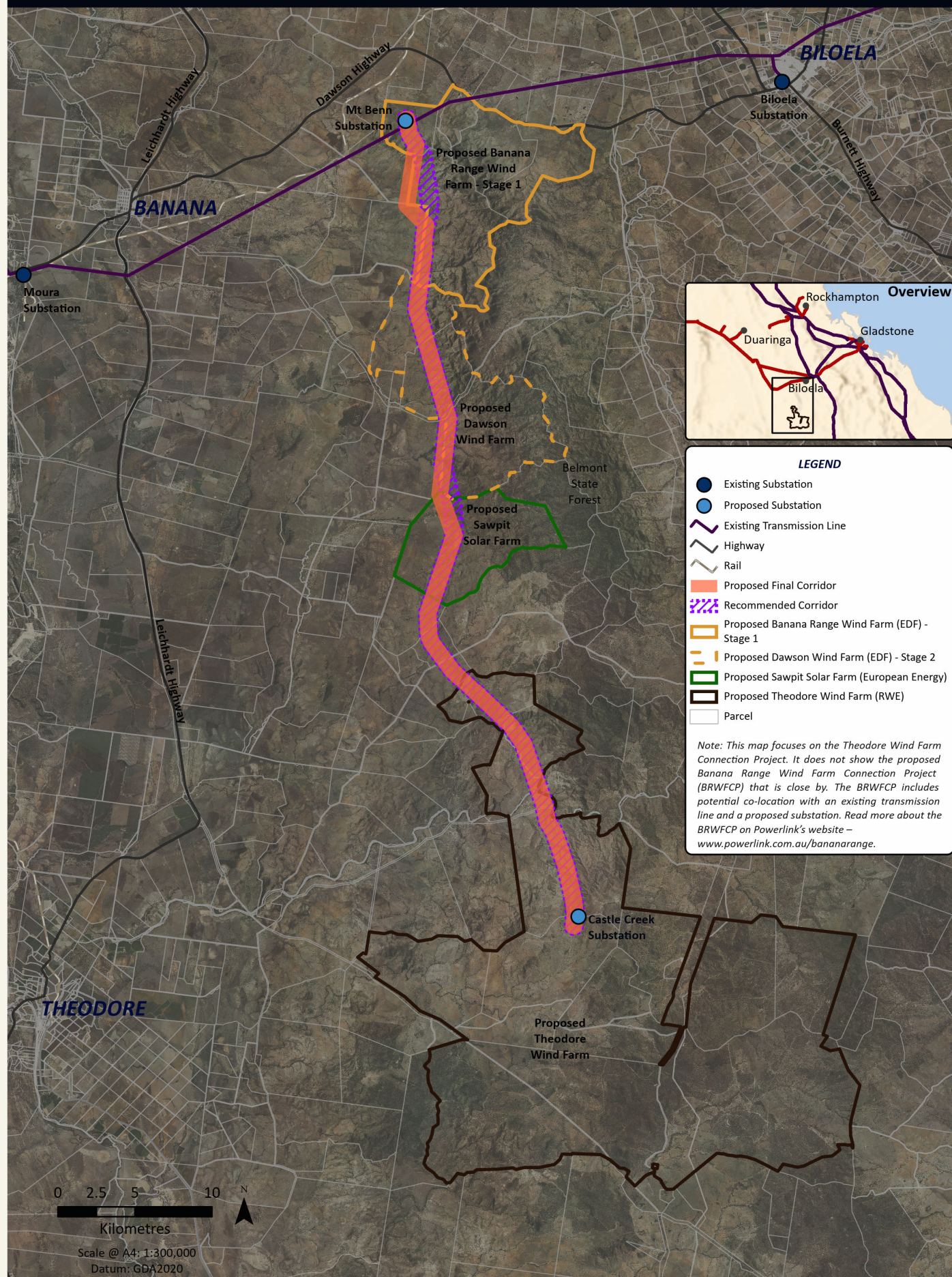
DCCEEW will review Powerlink's referral documentation and manage a consultation process. Following consultation led by DCCEEW, the project will be classified as either a 'Controlled Action' which means the project requires Commonwealth approval under the EPBC Act or 'Not Controlled Action'. Landholders, Traditional Owner groups, the community and other stakeholders will be informed on how to access this documentation, ask questions and make a submission.





**SAFE FOR LIFE**  
Everyone. Everywhere. Everyday.

## Theodore Wind Farm Connection Project







*Theodore township sign in Theodore.*

## Next steps

Powerlink will continue to work closely with directly affected landholders, Traditional Owner groups, the wider community and other stakeholders as planning activities progress to ultimately reduce the 1km-wide corridor to a 60m-wide easement.

If the project is approved, construction is proposed to commence by late 2026.

## Further information

If you have any questions about the Theodore Wind Farm Connection Project, please contact our project team on 07 3898 4919 or [theodore@powerlink.com.au](mailto:theodore@powerlink.com.au).

You can also contact RWE directly for any enquiries about their wind farm project at [au.rwe.com/projects/theodore-wind-farm](https://au.rwe.com/projects/theodore-wind-farm).

[powerlink.com.au/theodore](https://powerlink.com.au/theodore)



**SAFE FOR LIFE**  
Everyone. Everywhere. Everyday.