

# Bouldercombe to Larcom Creek Transmission Line Reinforcement Project

**POWERLINK QUEENSLAND**

## About the project

Powerlink is proposing to build a new high-voltage transmission line between the existing Bouldercombe and Larcom Creek substations via a proposed Gladstone West Substation.

The proposed transmission line will reinforce electricity supply to the Gladstone region, and increase network capacity and reliability to support:

- the electrification of local industry
- additional energy that will be produced by new energy generators
- eventual retirement of ageing coal-fired generators.

This project is part of Powerlink's broader program of work to reinforce the transmission network in Central Queensland. More information can be found at [powerlink.com.au/projects/gladstone-project](https://powerlink.com.au/projects/gladstone-project).

Powerlink is a Government Owned Corporation that owns, develops, operates and maintains the high voltage transmission network in Queensland.

## Project update

Powerlink has been undertaking early desktop and field studies (such as ecological studies) to inform the project's feasibility and approval pathway.

The findings of these initial investigations have been summarised in two corridor reports, which are now available for public comment.

## Have your say

We want to hear from you on the findings of the corridor reports. This newsletter outlines the key findings of these reports and opportunities to provide your feedback.

Further detail on how to provide feedback can be found on the back page of this newsletter. Consultation on the reports is open until 5pm, 4 November 2025.

*Powerlink acknowledges the Traditional Owners and their custodianship of the lands and waters of Queensland and in particular, the lands on which we operate. We pay our respect to their Ancestors, Elders and knowledge holders and recognise their deep history and ongoing connection to Country.*



[powerlink.com.au/projects](https://powerlink.com.au/projects)



**SAFE FOR LIFE**  
Everyone. Everywhere. Everyday.



## Key findings from the reports

### Corridor Validation Report (Sections A, B and C)

This report assesses the suitability of using an existing Powerlink easement (approximately 80km in length) between Bouldercombe Substation and the proposed Gladstone West Substation site to accommodate the proposed new transmission line.

#### Some key findings

- In Sections A and B, the existing easement is wide enough to accommodate the proposed transmission line. The southern side of the easement has been identified as the most suitable location for the new transmission line. The report notes the presence of some farming infrastructure within the easement, as well as intersections with roads. These constraints are considered manageable through further engagement and design solutions.
- In Section C, additional easement width will be required north of the existing easement and proposed Calvale to Calliope Transmission Line Reinforcement Project.
- To connect the proposed line, a small extension will be required at both Bouldercombe and Larcom Creek substations. If approved, the works would be carried out within the existing substation footprints.

### Draft Corridor Selection Report (Section D)

This report identifies a recommended corridor for a new transmission line (approximately 15km in length), between the proposed Gladstone West Substation and the existing substation at Larcom Creek. Powerlink holds a vacant easement in this area (approximately 10km in length).

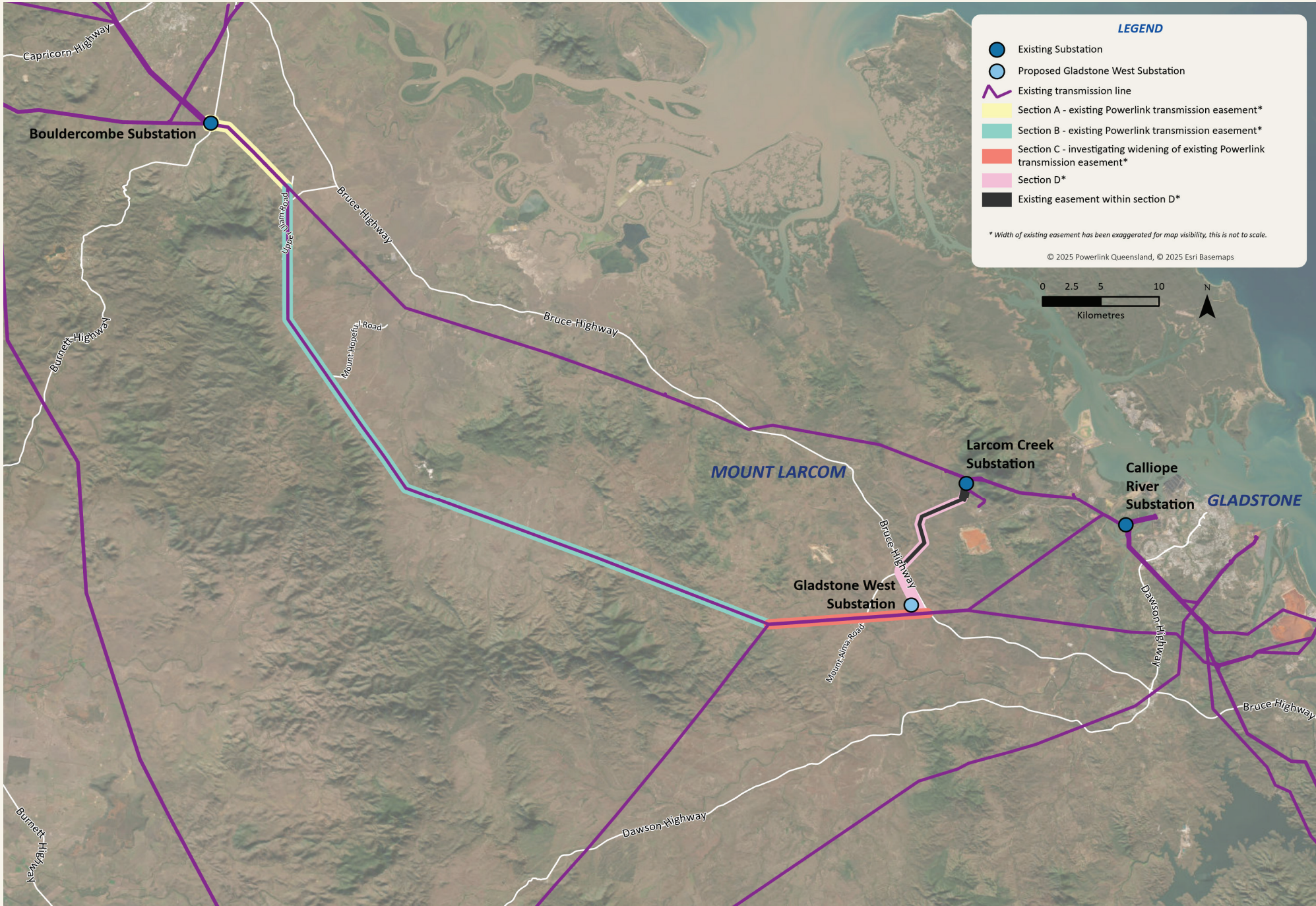
#### Some key findings

- The corridor that has been recommended:
  - reduces the need for new land acquisition and minimises community disruption compared to a new greenfield corridor.
  - has existing easement with sufficient width to accommodate the proposed transmission line.
  - seeks to avoid steep terrain, threatened ecological communities, essential habitat, and conflicts with future Gladstone State Development Area (GSDA) developments.
  - presents the lowest overall social, environmental, and economic impacts.
- Further desktop and onsite studies, together with stakeholder engagement, will inform the final corridor. The outcomes will be published in the Final Corridor Selection Report.

To read the full reports, scan the QR code to be taken to the project website, and navigate to the 'Community hub'. The reports are available under the 'Resources' heading.



## Bouldercombe to Larcom Creek Transmission Line Reinforcement Project



### Gladstone West Substation

Powerlink acquired land for a new substation and is in the early stages of planning.

For planning and environmental approval purposes, this substation is part of the Bouldercombe to Larcom Creek Transmission Line Reinforcement Project.

### Why are there two separate corridor reports?

Powerlink has prepared two project reports because there are two distinct areas under investigation as part of this project, with different needs.

### Next steps

Powerlink is inviting community feedback on both reports until 5pm, 4 November 2025. Please see the back page for ways you can provide feedback.



## Project approvals

Powerlink is working with relevant Federal and State government departments to confirm the appropriate planning and environmental approvals pathway.

Powerlink will also comply with the engagement requirements of formal planning and approval processes undertaken, which may include supporting formal submission periods undertaken by government. When the approvals pathway is confirmed, stakeholders will be advised of the associated opportunities to provide feedback.

## We want to hear from you

We invite your comments on the findings of the corridor reports. You can provide feedback by:



Attending a community information drop-in session. These sessions are detailed below.



Visiting our [website](#) and using the interactive mapping tool to leave a comment.



Filling in a feedback form online (available on the project [website](#)).



Phoning 1800 635 369 (Monday to Friday, 7.30am – 5pm)



Emailing [cqprojects@powerlink.com.au](mailto:cqprojects@powerlink.com.au)

## Community information drop-in sessions

Powerlink team members will be hosting the following project community information drop-in sessions. We invite you to stop by at any time during these sessions to provide feedback or ask questions about the project.

Location	Date	Time
Bajool Hall	Wednesday 22 October	4pm to 7pm
Bouldercombe Sports and Recreation Complex	Thursday 23 October	4pm to 7pm
Mount Larcom Bowls Club	Friday 24 October	8am to 11am

There will be future opportunities to provide feedback about the project. This may include formal consultation periods as part of our project approval process, community information sessions, email, and via our project website.