

Appendix B Drawings, plans and perspectives of the Proposal

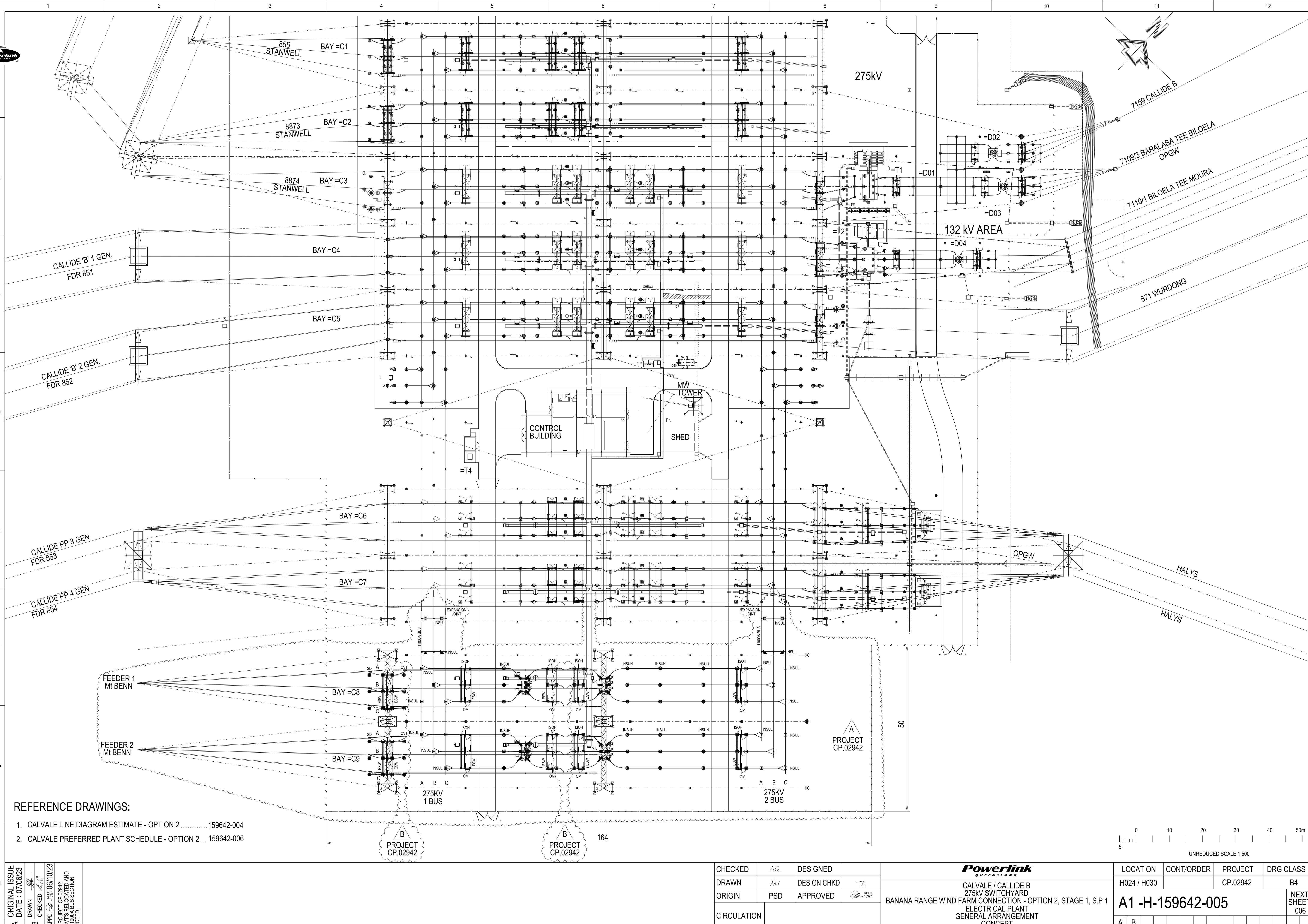


POWERLINK QUEENSLAND IS THE TRADING NAME OF THE QUEENSLAND ELECTRICITY TRANSMISSION CORPORATION LIMITED ACN 078 948 233

950x801

CAD

H



REFERENCE DRAWINGS:

- 1. CALVALE LINE DIAGRAM ESTIMATE - OPTION 2159642-004
- 2. CALVALE PREFERRED PLANT SCHEDULE - OPTION 2 ... 159642-006

A	ORIGINAL ISSUE	DATE : 07/06/23
B	DRAWN	CHECKED
APPD	06/10/23	PROJECT CP.02942
		CVTS RELOCATED AND 11000A BUS SECTION NOTED.

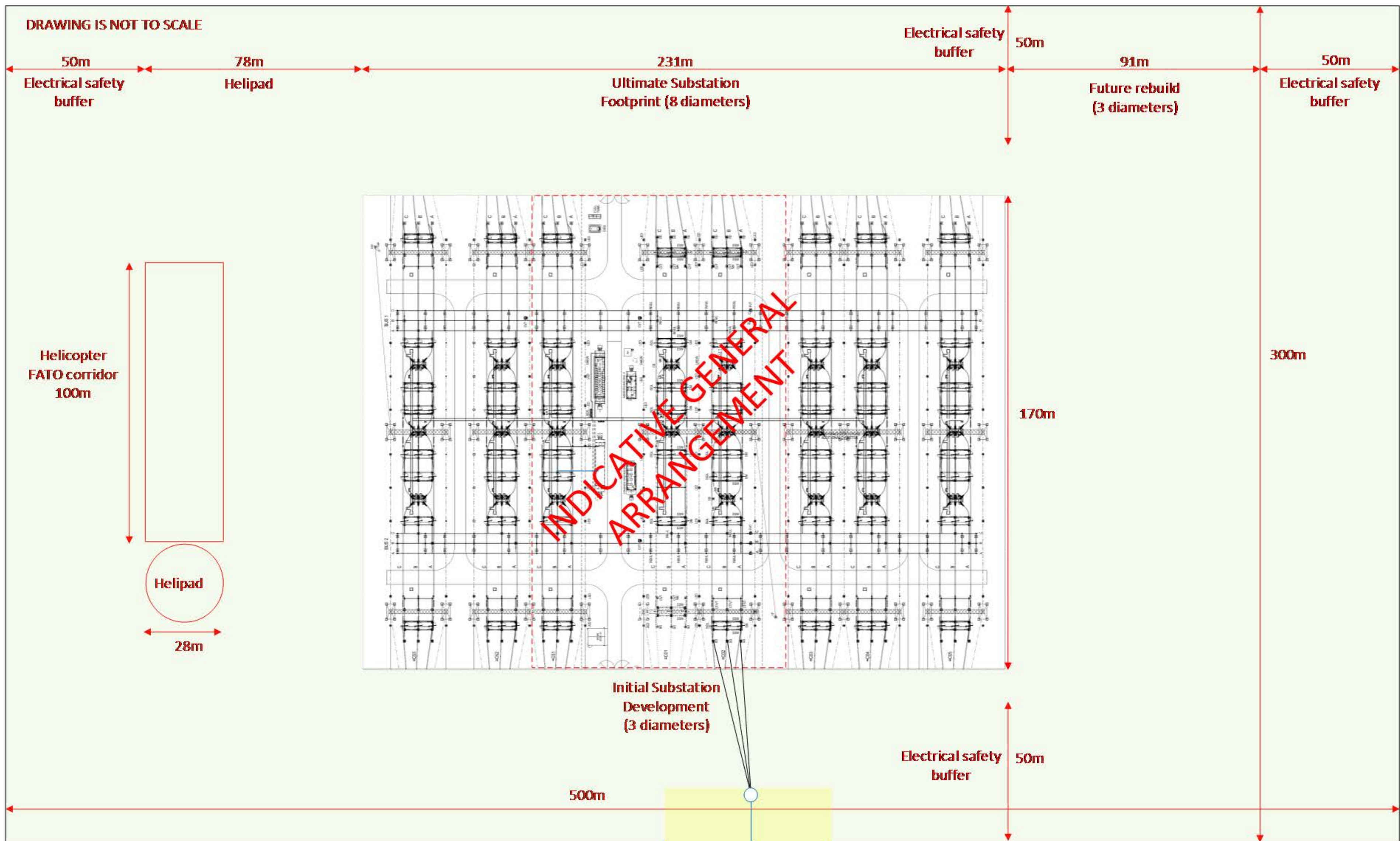
CHECKED	AQ	DESIGNED	
DRAWN	Wei	DESIGN CHKD	TC
ORIGIN	PSD	APPROVED	06/10/23
CIRCULATION			

CALVALE / CALLIDE B
275kV SWITCHYARD
ELECTRICAL PLANT
GENERAL ARRANGEMENT
CONCEPT

BANANA RANGE WIND FARM CONNECTION - OPTION 2, STAGE 1, S.P 1

LOCATION	CONT/ORDER	PROJECT	DRG CLASS
H024 / H030		CP.02942	B4
A1 -H-159642-005			NEXT SHEET 006
A	B		

DRAWING IS NOT TO SCALE



Legend

- Powerlink assets
- Customer assets
- Customer easements

THE LOCATION OF PROPOSED EASEMENT E WAS
BASED ON DIMENSIONS PROVIDED BY POWERLINK
RELATIVE TO THE EXISTING EASEMENTS.

THE POSITION OF EXISTING BOUNDARIES,
EXISTING EASEMENTS AND THE PROPOSED
EASEMENT E, INCLUDING THE DIMENSIONS SHOWN,
HAVE BEEN DETERMINED BY CADASTRAL SURVEY.

BANANA RANGE WIND FARM TO CALVALE
SUBSTATION TRANSMISSION LINE.

LandPartners Pty Ltd (ACN 118 146 008) hereby certify that the
land comprised in this plan was surveyed by the corporation, by
Roland Pi-is ODSEY, cadastral surveyor for whose work the
corporation accepts responsibility and that the plan is accurate,
that the said survey was performed in accordance with the Survey
and Mapping Infrastructure Act 2003 and Surveyors Act 2003 and
associated Regulations and Standards and that the said survey
was completed on 15/02/2025.

.....
Authorised Delegate

28/02/2025
.....
Date

0m 500m 1000m 1500m
State copyright reserved.

Plan of Proposed Easement E

Scale: 1:10000
Format: STANDARD

in Lot 43 on PM375

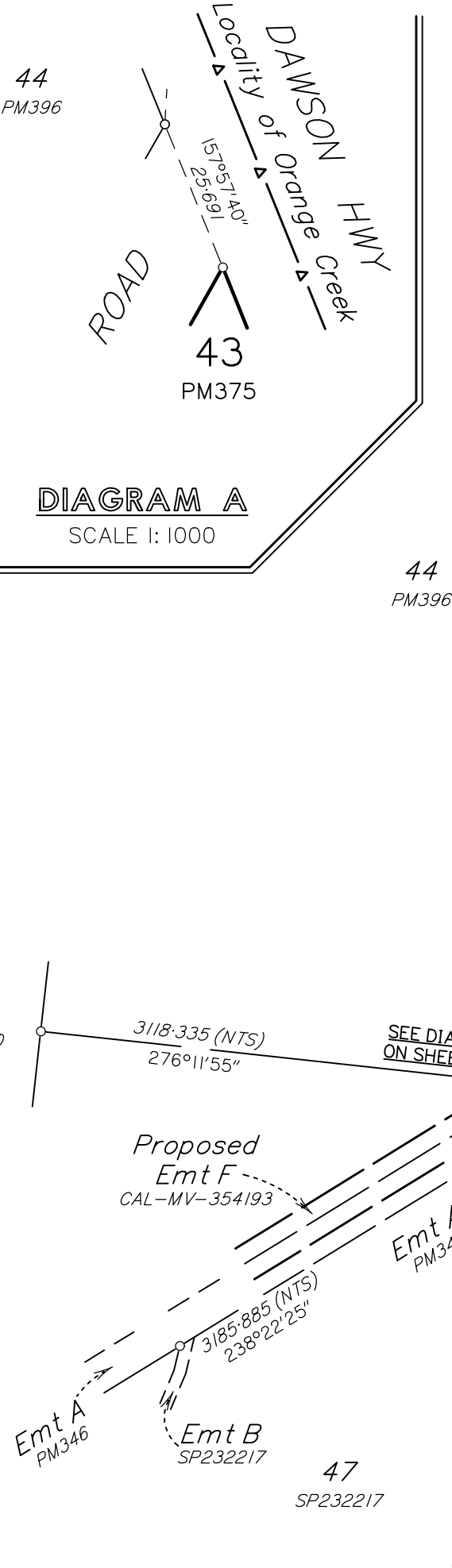
LOCAL GOVERNMENT: BANANA SHIRE LOCALITY: BANANA

Meridian: MGA (Zone 56) vide AUSPOS

Survey Records: No

CAL-MV-354192

DIAGRAM A
SCALE 1:1000



PROPOSED
EASEMENT E
12.37 ha

MGA COORDINATES GDA2020 (Zone 56)

STATION	EASTING	NORTHING
CAL-MV-01	228 870.3	7 297 666.4
CAL-MV-02	227 621.6	7 297 403.6
CAL-MV-03	226 952.0	7 296 991.3

MGA COORDINATES GDA2020 – CONTROL

STATION	EASTING	NORTHING	ZONE	P.U.	LINEAGE	METHOD
OPM186114	224 228.092	7 295 244.331	56	0.019	DERIVED	AUSPOS
S Pkt	226 738.076	7 296 792.259	56	0.017	DERIVED	AUSPOS
OPM128977	229 191.481	7 297 335.896	56	0.05	DA TUM	QLD ANJ 25.01
OPM129108	221 777.295	7 298 440.026	56	0.044	DA TUM	QLD ANJ 25.01

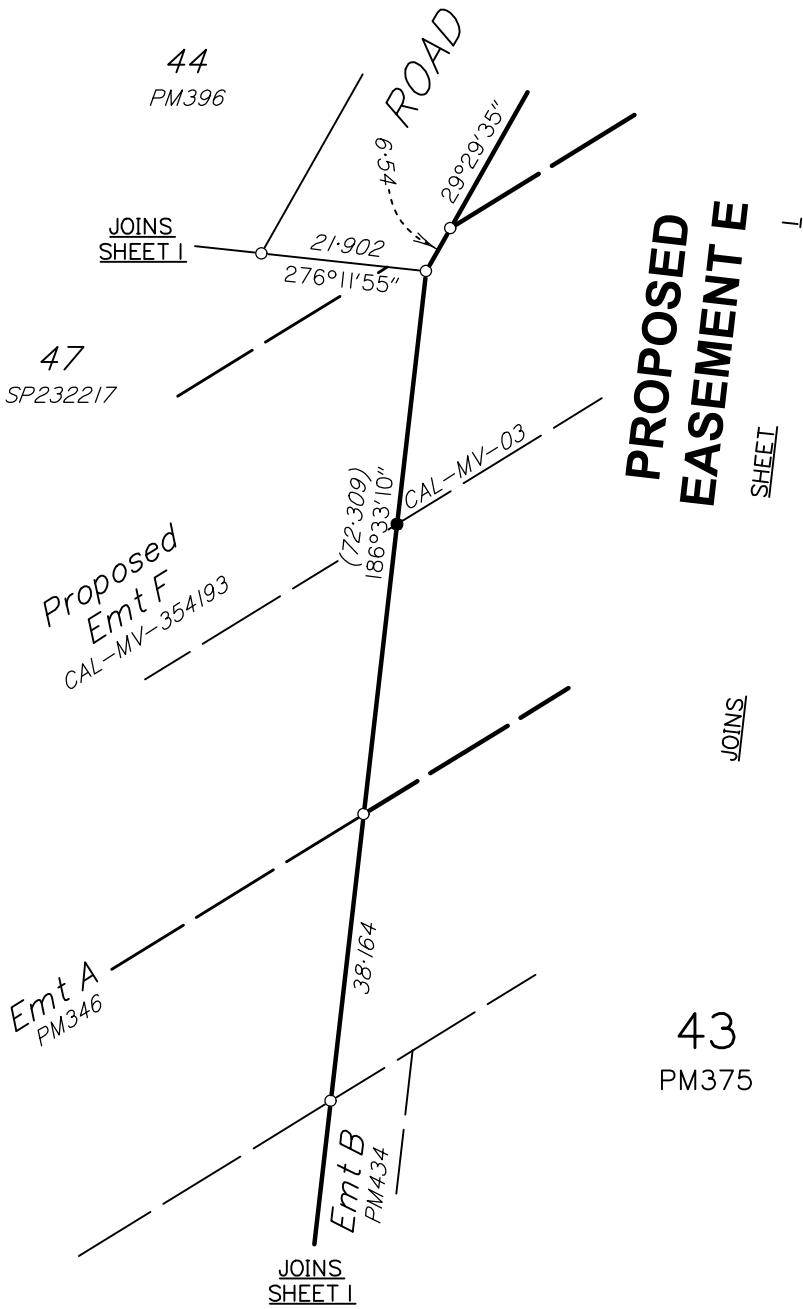


DIAGRAM B
SCALE 1: 1000

DIAGRAM D
SCALE 1: 1000

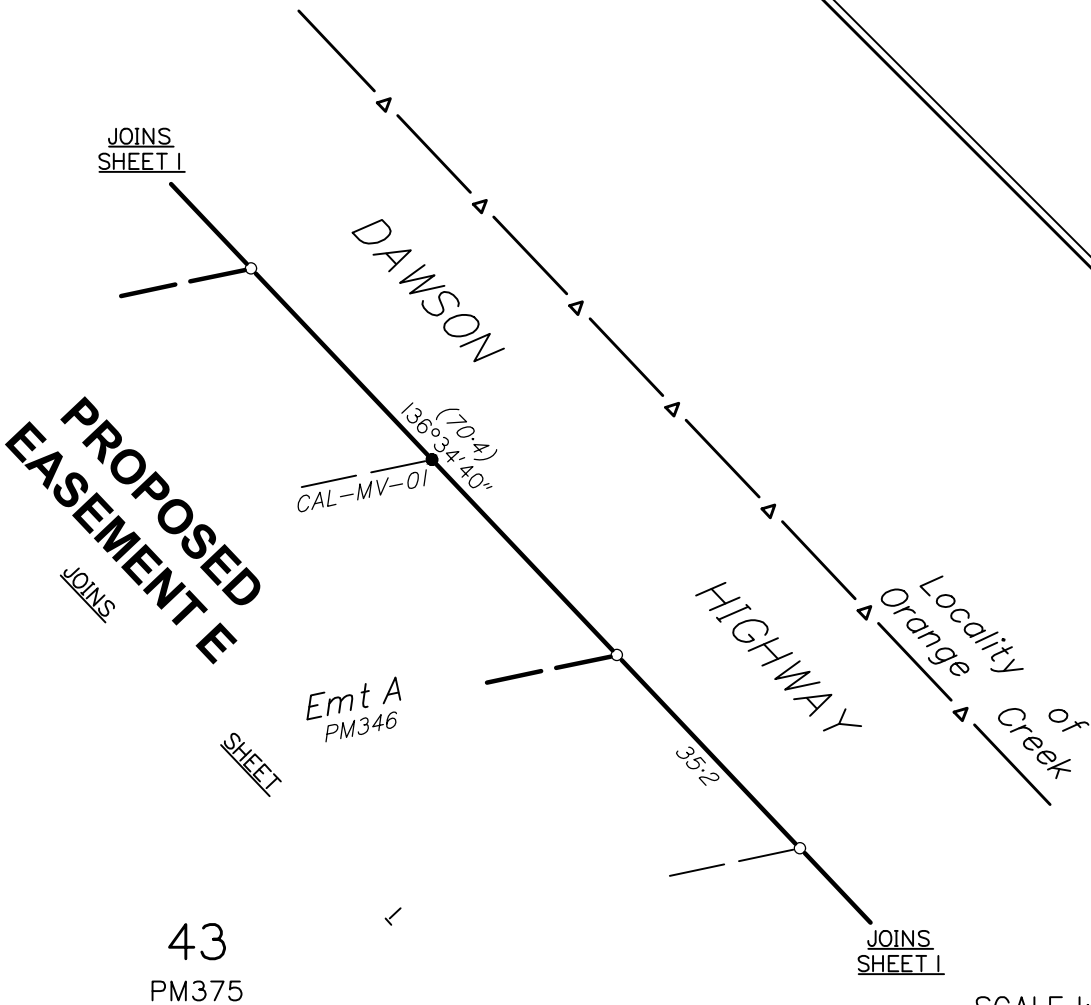
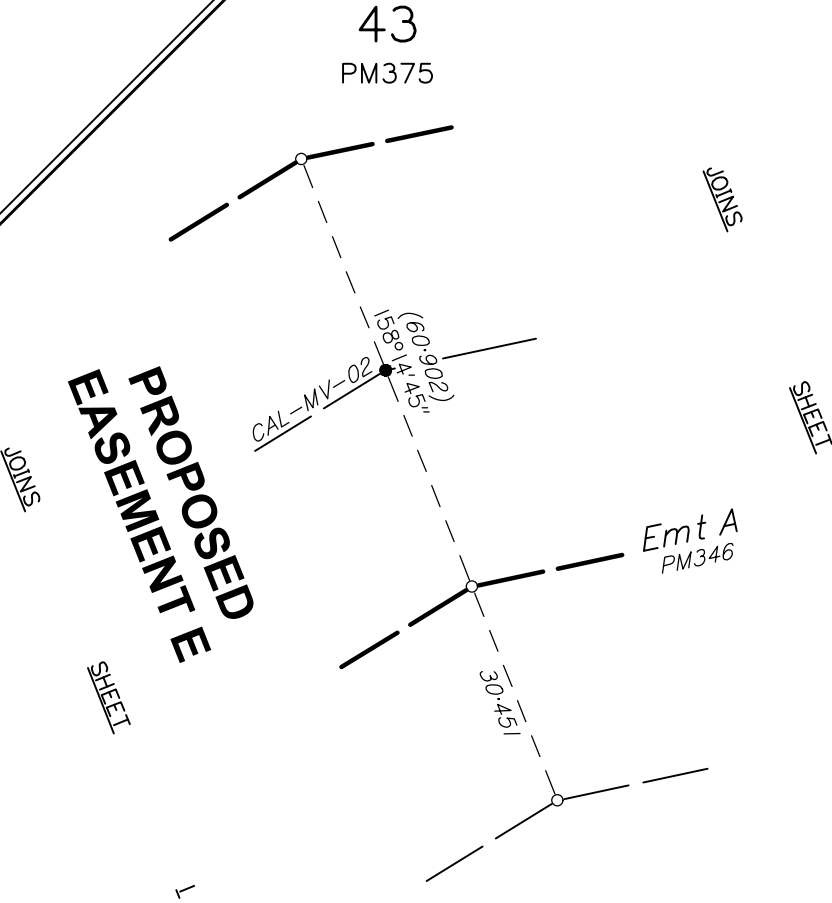
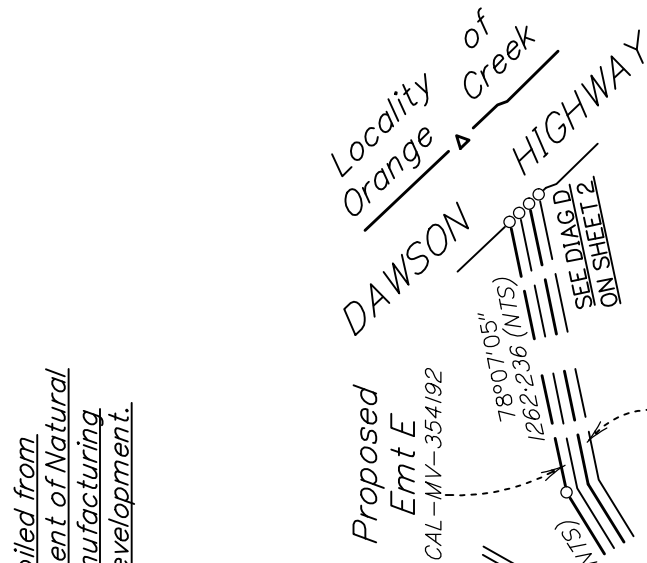


DIAGRAM C
SCALE 1: 1000





*Original information compiled from
SP232217 in the Department of Natural
Resources and Mines, Manufacturing
and Regional and Rural Development.*


MGA COORDINATES GDA2020 (Zone 56)

STATION	EASTING	NORTHING
CAL-MV-03	226 952.0	7 296 991.3
CAL-MV-04	225 492.5	7 296 092.4
CAL-MV-05	225 171.4	7 296 176.6

MGA COORDINATES GDA2020 (Zone 56) – CONTROL

STATION	EASTING	NORTHING	ZONE	P.U.	LINEAGE	METHOD
OPM186114	224 228-092	7 295 244-331	56	0-019	DERIVED	AUSPOS
S Pkt	226 738-076	7 296 792-259	56	0-017	DERIVED	AUSPOS
OPM128977	229 191-481	7 297 335-896	56	0-05	DATAUM	QLD ANU 25.01
OPM129108	221 777-295	7 298 440-026	56	0-044	DATAUM	QLD ANU 25.01

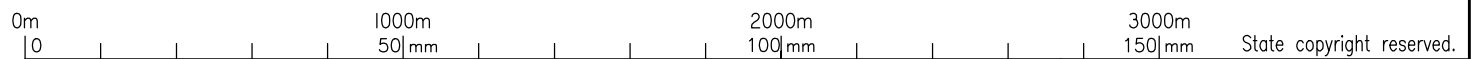
LandPartners Pty Ltd (ACN I18 146 008) hereby certify that the land comprised in this plan was surveyed by the corporation, by Roland Pi— is ODSEY, cadastral surveyor for whose work the corporation accepts responsibility and that the plan is accurate, that the said survey was performed in accordance with the *Survey and Mapping Infrastructure Act 2003* and *Surveyors Act 2003* and associated Regulations and Standards and that the said survey was completed on 15/02/2025.



Authorised Delegate

28/02/2025

Date _____



*Plan of Lots 1 & 47 and
Proposed Easement F in Lot 47*

Cancelling Lot 47 on SP232217

LOCAL
GOVERNMENT: BANANA SHIRE LOCALITY: BANANA

Meridian: *MGA (Zone 56) vide AUSPOS*

Survey Records:	No
--------------------	----

Scale: ***1:20000***

Format: **STANDARD**

CAL-MV-354193

State copyright reserved.

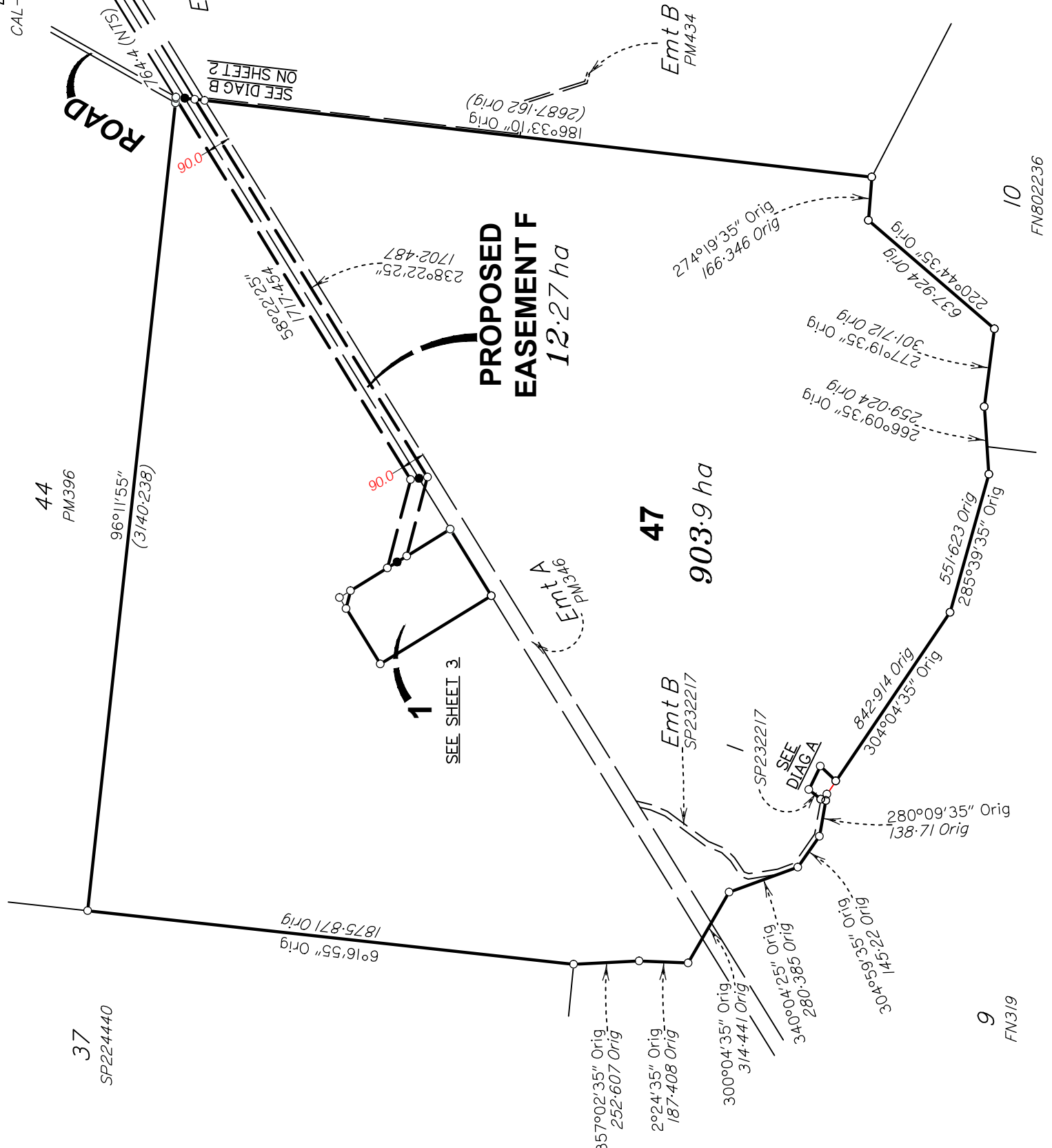
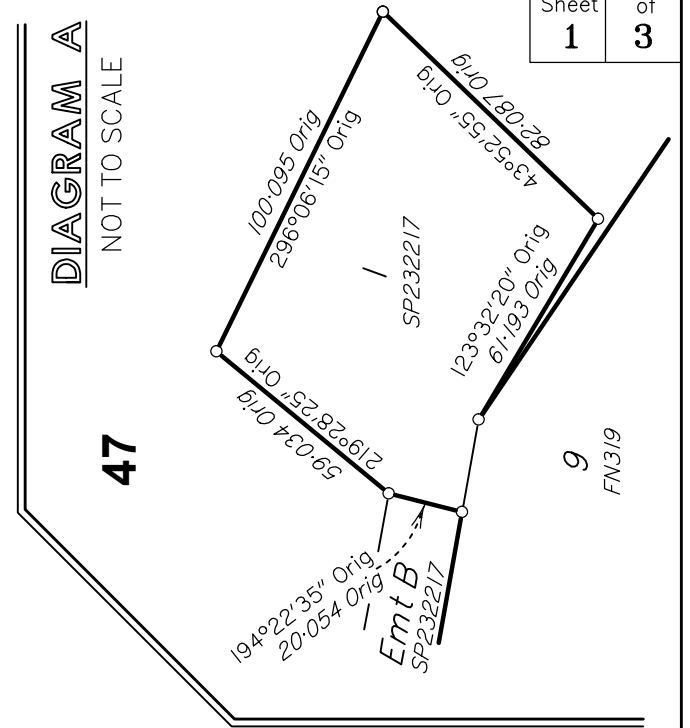
THE LOCATION OF PROPOSED EASEMENT F AND THE PROPOSED SUBSTATION LOT WERE BASED ON THE DIMENSIONS PROVIDED BY POWERLINK RELATIVE TO THE EXISTING EASEMENTS.

THE POSITION OF EXISTING BOUNDARIES, EXISTING EASEMENTS, THE PROPOSED EASEMENT F AND THE PROPOSED SUBSTATION LOT, INCLUDING THE DIMENSIONS SHOWN, HAVE BEEN DETERMINED BY CADASTRAL SURVEY.

**PROPOSED
EASEMENT F**
12.27 ha

BANANA RANGE WIND FARM TO CALVALE
SUBSTATION TRANSMISSION LINE.

DIAGRAM A
NOT TO SCALE



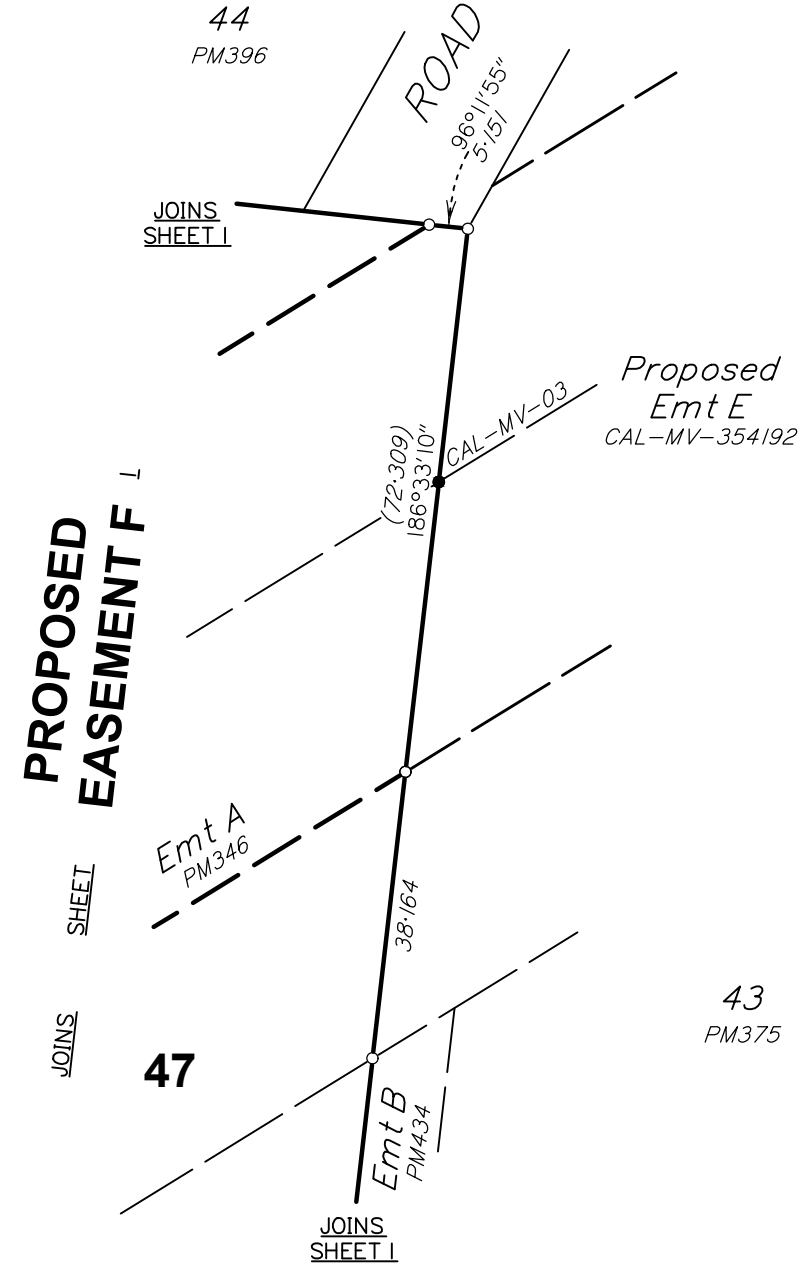
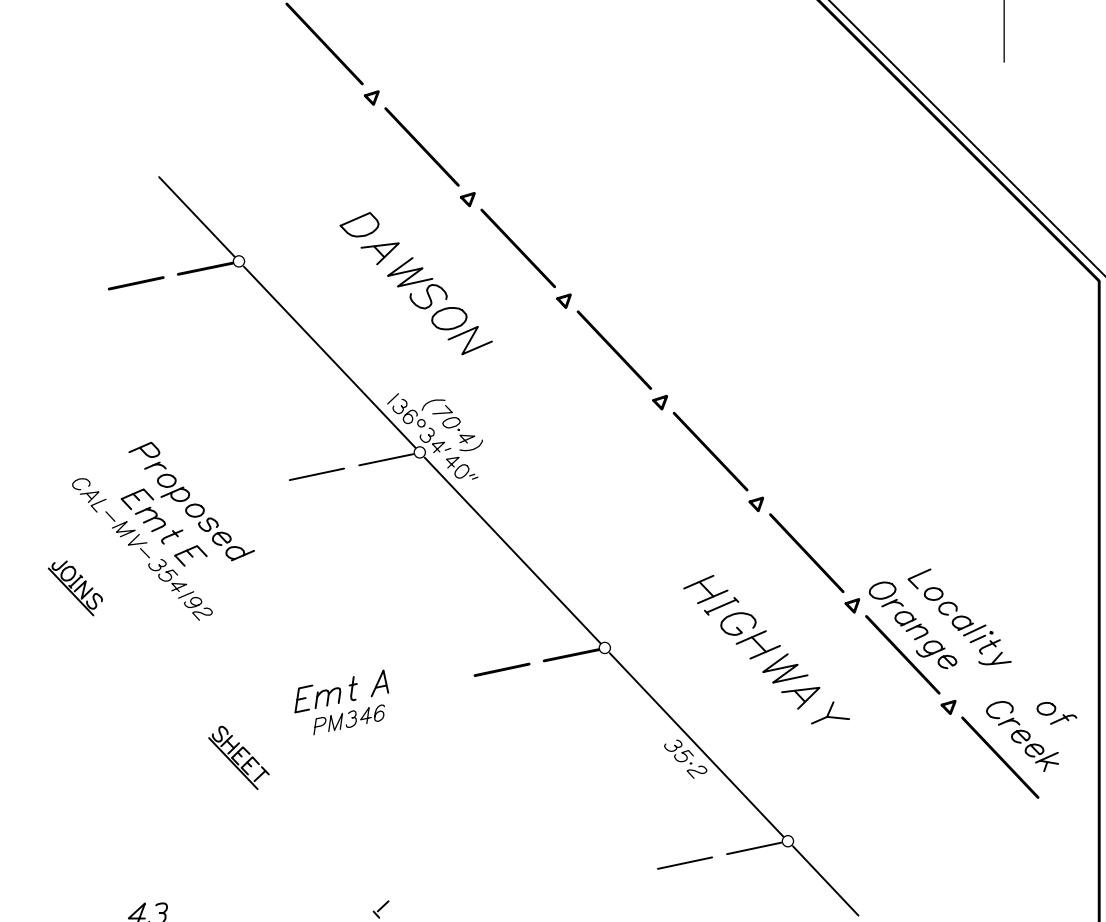


DIAGRAM B
SCALE 1: 1000



DIAGRAM D
SCALE 1: 1000



SCALE 1: 1000









Legend

- Transmission Towers
- Proposed Access Track
- Proposed Access Track Off Easement
- Existing Access Track
- Cadastre
- MID Corridor



Scale 1:10,000



0 200 400 metres

Coord. Sys. GDA2020 MGA Zone 56

**Banana Range Wind Farm
Connection Project –
MID Assessment Report**


**MID CORRIDOR AND
TOWER LOCATION**

APPENDIX B - A




Legend

- Transmission Towers
- Proposed Access Track
- Proposed Access Track Off Easement
- Existing Access Track
- Cadastre
- MID Corridor



Scale 1:10,000



0 200 400 metres

Coord. Sys. GDA2020 MGA Zone 56

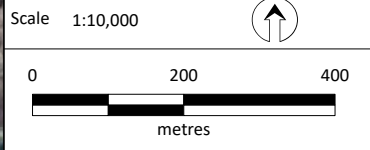
**Banana Range Wind Farm
Connection Project –
MID Assessment Report**

**MID CORRIDOR AND
TOWER LOCATION**

APPENDIX B - B



- Legend**
- Transmission Towers
 - Road
 - Proposed Access Track
 - Proposed Access Track Off Easement
 - Existing Access Track
 - Cadastre
 - MID Corridor



Coord. Sys. GDA2020 MGA Zone 56

**Banana Range Wind Farm
Connection Project –
MID Assessment Report**

**MID CORRIDOR AND
TOWER LOCATION**

APPENDIX B - C




Legend

- Transmission Towers
- Road
- Proposed Access Track
- Proposed Access Track Off Easement
- Existing Access Track
- Cadastre
- MID Corridor



Scale 1:10,000



0 200 400 metres

Coord. Sys. GDA2020 MGA Zone 56

**Banana Range Wind Farm
Connection Project –
MID Assessment Report**


**MID CORRIDOR AND
TOWER LOCATION**

APPENDIX B - D




Legend

- Transmission Towers
- Proposed Access Track
- Proposed Access Track Off Easement
- Existing Access Track
- Cadastre
- MID Corridor



Scale 1:10,000



0 200 400 metres

Coord. Sys. GDA2020 MGA Zone 56

**Banana Range Wind Farm
Connection Project –
MID Assessment Report**


**MID CORRIDOR AND
TOWER LOCATION**

APPENDIX B - E



Legend

- Transmission Towers
- Road
- Proposed Access Track
- Proposed Access Track Off Easement
- Existing Access Track
- Cadastre
- MID Corridor



Scale 1:10,000



0 200 400 metres

Coord. Sys. GDA2020 MGA Zone 56

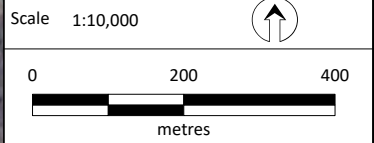
**Banana Range Wind Farm
Connection Project –
MID Assessment Report**

**MID CORRIDOR AND
TOWER LOCATION**

APPENDIX B - F



- Legend**
- Transmission Towers
 - Proposed Access Track
 - Proposed Access Track Off Easement
 - Existing Access Track
 - Cadastrate
 - MID Corridor



Coord. Sys. GDA2020 MGA Zone 56

**Banana Range Wind Farm
Connection Project –
MID Assessment Report**


**MID CORRIDOR AND
TOWER LOCATION**

APPENDIX B - G



Legend

- Transmission Towers
- Road
- Proposed Access Track
- Proposed Access Track Off Easement
- Existing Access Track
- Cadastre
- MID Corridor



Scale 1:10,000

0 200 400 metres

Coord. Sys. GDA2020 MGA Zone 56

**Banana Range Wind Farm
Connection Project –
MID Assessment Report**


**MID CORRIDOR AND
TOWER LOCATION**

APPENDIX B - H



Legend

- Transmission Towers
- Road
- Proposed Access Track
- Proposed Access Track Off Easement
- Cadastre
- MID Corridor



Scale 1:10,000

0 200 400 metres

Coord. Sys. GDA2020 MGA Zone 56

**Banana Range Wind Farm
Connection Project –
MID Assessment Report**

**MID CORRIDOR AND
TOWER LOCATION**

APPENDIX B - I




Legend


- Transmission Towers
- Road
- Watercourse (Water Act)
- Proposed Access Track
- Proposed Access Track Off Easement
- Cadastral
- MID Corridor



Scale 1:10,000



0200400



metres

Coord. Sys. GDA2020 MGA Zone 56

**Banana Range Wind Farm
Connection Project –
MID Assessment Report**


**MID CORRIDOR AND
TOWER LOCATION**

APPENDIX B - J



Legend

- Transmission Towers
- Road
- Watercourse (Water Act)
- Proposed Access Track
- Proposed Access Track Off Easement
- Cadastre
- MID Corridor



Scale 1:10,000

0 200 400 metres

Coord. Sys. GDA2020 MGA Zone 56

**Banana Range Wind Farm
Connection Project –
MID Assessment Report**


**MID CORRIDOR AND
TOWER LOCATION**

APPENDIX B - K



Legend

- Transmission Towers
- Road
- Watercourse (Water Act)
- Proposed Access Track
- Proposed Access Track Off Easement
- Existing Access Track
- Cadastre
- MID Corridor



Scale 1:10,000

0 200 400 metres

Coord. Sys. GDA2020 MGA Zone 56

**Banana Range Wind Farm
Connection Project –
MID Assessment Report**


**MID CORRIDOR AND
TOWER LOCATION**

APPENDIX B - L




Legend

- Transmission Towers
- Railway
- Road
- Watercourse (Water Act)
- Proposed Access Track
- Proposed Access Track Off Easement
- Cadastrate
- MID Corridor



Scale 1:10,000



0 200 400 metres

Coord. Sys. GDA2020 MGA Zone 56

**Banana Range Wind Farm
Connection Project –
MID Assessment Report**


**MID CORRIDOR AND
TOWER LOCATION**

APPENDIX B - M



Legend

- Transmission Towers
- Railway
- Road
- Proposed Access Track
- Proposed Access Track Off Easement
- Cadastral
- MID Corridor



Scale 1:10,000

0 200 400 metres

Coord. Sys. GDA2020 MGA Zone 56

**Banana Range Wind Farm
Connection Project –
MID Assessment Report**


**MID CORRIDOR AND
TOWER LOCATION**

APPENDIX B - N




Legend

- Transmission Towers
- Road
- Proposed Access Track
- Proposed Access Track Off Easement
- Existing Access Track
- Cadastre
- MID Corridor



Scale 1:10,000



0 200 400 metres

Coord. Sys. GDA2020 MGA Zone 56

**Banana Range Wind Farm
Connection Project –
MID Assessment Report**

**MID CORRIDOR AND
TOWER LOCATION**

APPENDIX B - O

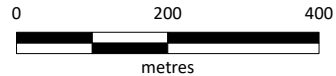


Legend

- Transmission Towers
- Proposed Access Track
- Proposed Access Track Off Easement
- Existing Access Track
- Cadastrate
- MID Corridor



Scale 1:10,000



Coord. Sys. GDA2020 MGA Zone 56

**Banana Range Wind Farm
Connection Project –
MID Assessment Report**


**MID CORRIDOR AND
TOWER LOCATION**

APPENDIX B - P




Legend

- Transmission Towers
- Road
- Proposed Access Track
- Proposed Access Track Off Easement
- Existing Access Track
- Cadastral
- MID Corridor



Scale 1:10,000



0 200 400
metres

Coord. Sys. GDA2020 MGA Zone 56

**Banana Range Wind Farm
Connection Project –
MID Assessment Report**


**MID CORRIDOR AND
TOWER LOCATION**

APPENDIX B - Q




Legend

- Transmission Towers
- Road
- Proposed Access Track
- Proposed Access Track Off Easement
- Existing Access Track
- Cadastre
- MID Corridor



Scale 1:10,000



0 200 400
metres

Coord. Sys. GDA2020 MGA Zone 56

**Banana Range Wind Farm
Connection Project –
MID Assessment Report**


**MID CORRIDOR AND
TOWER LOCATION**

APPENDIX B - R




Legend

- Transmission Towers
- Road
- Proposed Access Track
- Proposed Access Track Off Easement
- Existing Access Track
- Cadastre
- MID Corridor



Scale 1:10,000



0 200 400
metres

Coord. Sys. GDA2020 MGA Zone 56

**Banana Range Wind Farm
Connection Project –
MID Assessment Report**


**MID CORRIDOR AND
TOWER LOCATION**

APPENDIX B - S



Legend

- Transmission Towers
- Railway
- Road
- Proposed Access Track
- Proposed Access Track Off Easement
- Existing Access Track
- Cadastre
- MID Corridor



Scale 1:10,000

0 200 400 metres

Coord. Sys. GDA2020 MGA Zone 56

**Banana Range Wind Farm
Connection Project –
MID Assessment Report**

**MID CORRIDOR AND
TOWER LOCATION**

APPENDIX B - T



Legend

- Transmission Towers
- Railway
- Road
- Proposed Access Track
- Proposed Access Track Off Easement
- Existing Access Track
- Cadastre
- MID Corridor



Scale 1:10,000



0 200 400 metres

Coord. Sys. GDA2020 MGA Zone 56

**Banana Range Wind Farm
Connection Project –
MID Assessment Report**

**MID CORRIDOR AND
TOWER LOCATION**

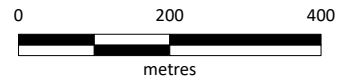
APPENDIX B - U



- Legend**
- Transmission Towers
 - Road
 - Watercourse (Water Act)
 - Proposed Access Track
 - Proposed Access Track Off Easement
 - Existing Access Track
 - Cadastre
 - MID Corridor



Scale 1:10,000



Coord. Sys. GDA2020 MGA Zone 56

**Banana Range Wind Farm
Connection Project –
MID Assessment Report**


**MID CORRIDOR AND
TOWER LOCATION**

APPENDIX B - V




Legend

- Transmission Towers
- Road
- Watercourse (Water Act)
- Proposed Access Track
- Proposed Access Track Off Easement
- Existing Access Track
- Cadastre
- MID Corridor



Scale 1:10,000



0 200 400 metres

Coord. Sys. GDA2020 MGA Zone 56

**Banana Range Wind Farm
Connection Project –
MID Assessment Report**

**MID CORRIDOR AND
TOWER LOCATION**

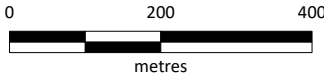
APPENDIX B - W



- Legend**
- Transmission Towers
 - Road
 - Proposed Access Track
 - Calvale Substation
 - Callide Power Station
 - Proposed Access Track Off Easement
 - Existing Access Track
 - Cadastral
 - MID Corridor



Scale 1:10,000



Coord. Sys. GDA2020 MGA Zone 56

**Banana Range Wind Farm
Connection Project –
MID Assessment Report**

**MID CORRIDOR AND
TOWER LOCATION**

APPENDIX B - X