

Banana Range Wind Farm Connection Project

POWERLINK QUEENSLAND

About the project

Powerlink Queensland is continuing to progress works to deliver a transmission line, around 44km in length, to connect the Banana Range Wind Farm (BRWF) to the transmission network.

The BRWF is a renewable energy development planned by EDF Renewables Australia.

The BRWF Connection Project (the project) involves:

- constructing a new double circuit 275kV transmission line from the BRWF site at the northern foothills of the Banana Range (about 20km west of Biloela), to Powerlink's existing Calvale Substation, near Callide Power Station
- building a new substation at the BRWF site
- expansion works around the existing Calvale Substation.

Public consultation on the MID Proposal Report

Powerlink is progressing the project's planning approval from the Queensland Government, under the Ministerial Infrastructure Designation (MID) process.

The project's MID Proposal Report was lodged with the Department of State Development, Infrastructure and Planning (DSDIP) in October 2025. DSDIP has now initiated consultation on the MID Proposal Report by writing to the relevant local government and impacted landholders to invite submissions.

Powerlink is also undertaking public consultation to support the MID process. Landholders, Traditional Owner groups, the community and other stakeholders are invited to view the MID Proposal Report and provide their feedback.

The MID Proposal Report examines the potential environmental, social and economic impacts of building, operating and maintaining the project, and outlines ways to manage these impacts.

Public consultation on the project's MID Proposal Report ends at 5pm on Friday 16 January 2026.

Further information on how to view the MID Proposal Report and provide feedback is included in this newsletter.

Powerlink acknowledges the Traditional Owners and their custodianship of the lands and waters of Queensland and in particular, the lands on which we operate. We pay our respect to their Ancestors, Elders and knowledge holders and recognise their deep history and ongoing connection to Country.



www.powerlink.com.au/banalarange



SAFE FOR LIFE
Everyone. Everywhere. Everyday.

How to view the MID Proposal Report (MID-1025-0972)

Hard copies of the MID Proposal Report are available to view at the following locations:

- Banana Shire Council Customer Centre, 62 Valentine Plains Road, Biloela
- Biloela Library, Cnr Grevillea and Melton Streets, Biloela.

An electronic copy is available on Powerlink's project webpage at powerlink.com.au/bananarange and DSDIP's webpage at www.planning.qld.gov.au/planning-framework/infrastructure-planning/ministerial-infrastructure-designations.

How to make a formal submission

You can provide your feedback on any part of the MID Proposal Report which includes the following project information such as:

- project description and need
- planning and approval requirements
- environmental assessment on impacts such as land use, biosecurity, and traffic and transport
- community and stakeholder consultation.

Formal submissions on the MID Proposal Report can be made directly to DSDIP via:

- online www.planning.qld.gov.au/planning-framework/infrastructure-planning/ministerial-infrastructure-designations
- email infrastructuredesignation@dsdip.qld.gov.au
- mail PO Box 15009, City East, QLD 4002.

Visit an upcoming community information drop-in session

Our project team is hosting a community information drop-in session in the Supper Room at the Biloela Civic Centre, 96 Rainbow Street, Biloela.

The session is being held on Tuesday 9 December 2025 from 3pm to 6pm.

You are welcome to stop by at any time during this session to meet with our project team and discuss the project's MID Proposal Report.

Project timeline

September 2021

Early Works Agreement

June 2022

Project engagement commenced

November 2022

Draft Corridor Selection Report released

April 2023

Final Corridor Selection Report released

April 2025

Technical studies complete

September 2025

EPBC referral to DCCEEW

October 2025

EPBC referral and DCCEEW consultation period
MID lodged with DSDIP

November 2025

EPBC referral decision – not a 'controlled action'

WE ARE HERE

MID public consultation

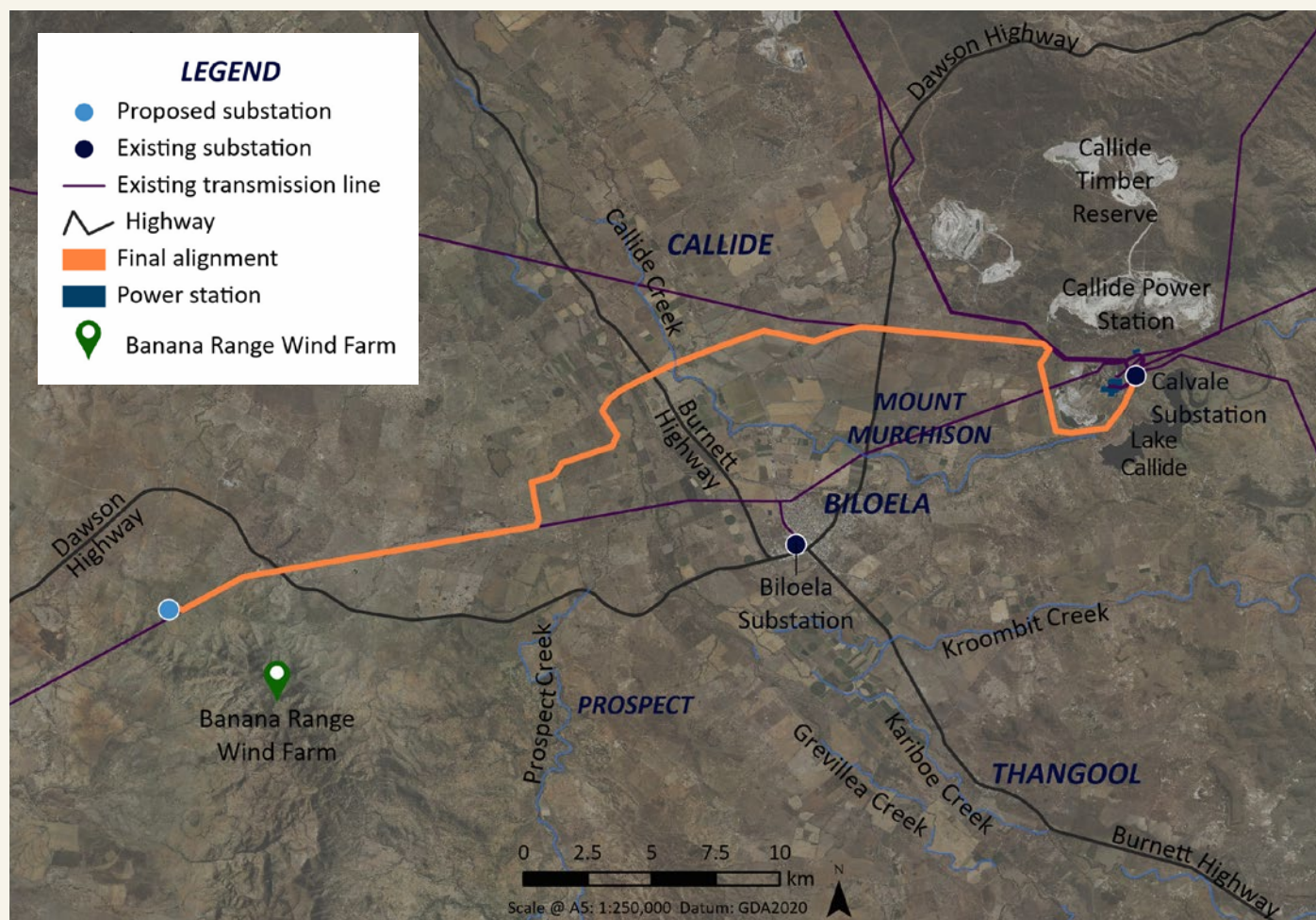
Early/mid 2026

Planning and environmental approvals complete (indicative timing only, subject to change)

September 2026

Construction commences (pending approvals)

Project map



Federal approvals update

In September 2025, Powerlink referred the project to the Department of Climate Change, Energy, the Environment and Water (DCCEEW) for assessment under the *Environment Protection and Biodiversity Conservation Act 1999* (the EPBC Act).

The referral was open for public consultation from 8 October to 22 October 2025, with two submissions received.

DCCEEW has subsequently determined that the project is not a 'controlled action' and therefore does not require any further assessment under the EPBC Act. The decision notice can be viewed online at epbcpublicportal.environment.gov.au/all-referrals.

What is a Ministerial Infrastructure Designation?

A Ministerial Infrastructure Designation (MID) is a State Government approvals process for assessing certain types of community supporting infrastructure. The MID process is managed by the Queensland Government, through DSDIP, with input from other government agencies.

How is feedback considered?

All formal submissions on the MID Proposal Report will be reviewed by DSDIP and sent to Powerlink for response.

Feedback provided directly to Powerlink will be reviewed and considered by our project team. When the public consultation period has finished, we will summarise the feedback we have received and how it has been used to guide the project's next steps.



About Powerlink

Powerlink is a leading Australian provider of electricity transmission services, focused on delivering a safe, cost-effective and reliable network for our customers.

Our network extends 1,700km from Cairns to the New South Wales (NSW) border and comprises 15,559 circuit km of transmission lines and 154 substations.

Our purpose is to connect Queenslanders to a world-class energy future, providing electricity to more than five million Queenslanders and 241,000 businesses.

Further information

If you have any general questions about this project, please contact our project team by calling 1800 635 369 (Monday to Friday, 7.30am – 5pm), or emailing cqprojects@powerlink.com.au.

Landholders along and directly adjacent to the final corridor are welcome to contact our Landholder Relations Team by calling 1800 635 369, or emailing landholderrelations@powerlink.com.au.

Please scan the QR code or visit powerlink.com.au/banarangrange to access our project webpage.

For enquiries about the Banana Range Wind Farm Project, please contact EDF Renewables on bananarangewindfarm@edf-re.com.au. You can register to receive their email updates at bananarangewindfarm.com.au.

