

Calvale to Calliope River Transmission Line Reinforcement Project

POWERLINK QUEENSLAND

About the project

Powerlink is planning for a new transmission line between the Calvale Substation (near Callide Power Station) and the Calliope River Substation (near Gladstone). The project will strengthen and increase capacity of the transmission network in the region.

At 87km long, the new double circuit 275kV transmission line will mostly be constructed in existing spare easements, beside existing transmission lines. The project also involves grid connections at both substations, as well as expanding the Calliope River Substation to accommodate the new infrastructure and increased energy needs.

Powerlink is a Government Owned Corporation that owns, develops, operates and maintains the transmission network in Queensland.

Project planning report open for public comment

Powerlink is applying for planning approval for this project under the MID process. We have prepared a MID Proposal Report, which looks at the potential social, environmental and economic impacts of building, operating and maintaining the project. It also outlines ways to avoid, minimise or mitigate these impacts.

In October 2025, Powerlink sent the project's MID Proposal Report to the Queensland Department of State Development, Infrastructure and Planning (DSDIP). The Department has now officially started the report's formal consultation period by writing to local government stakeholders and landholders. This consultation is initiated and managed by DSDIP and is supported by Powerlink engagement activities, which are now underway.

We invite landholders, Traditional Owner groups, the community and other stakeholders to view the project's MID Proposal Report, ask questions and provide feedback. Details on how to view the MID Proposal Report, ask questions and provide feedback are provided in this newsletter.

Consultation on the project's MID Proposal Report ends at **5pm, Monday 22 December 2025.**

Powerlink acknowledges the Traditional Owners and their custodianship of the lands and waters of Queensland and in particular, the lands on which we operate. We pay our respect to their Ancestors, Elders and knowledge holders and recognise their deep history and ongoing connection to Country.



powerlink.com.au/calvale-calliope

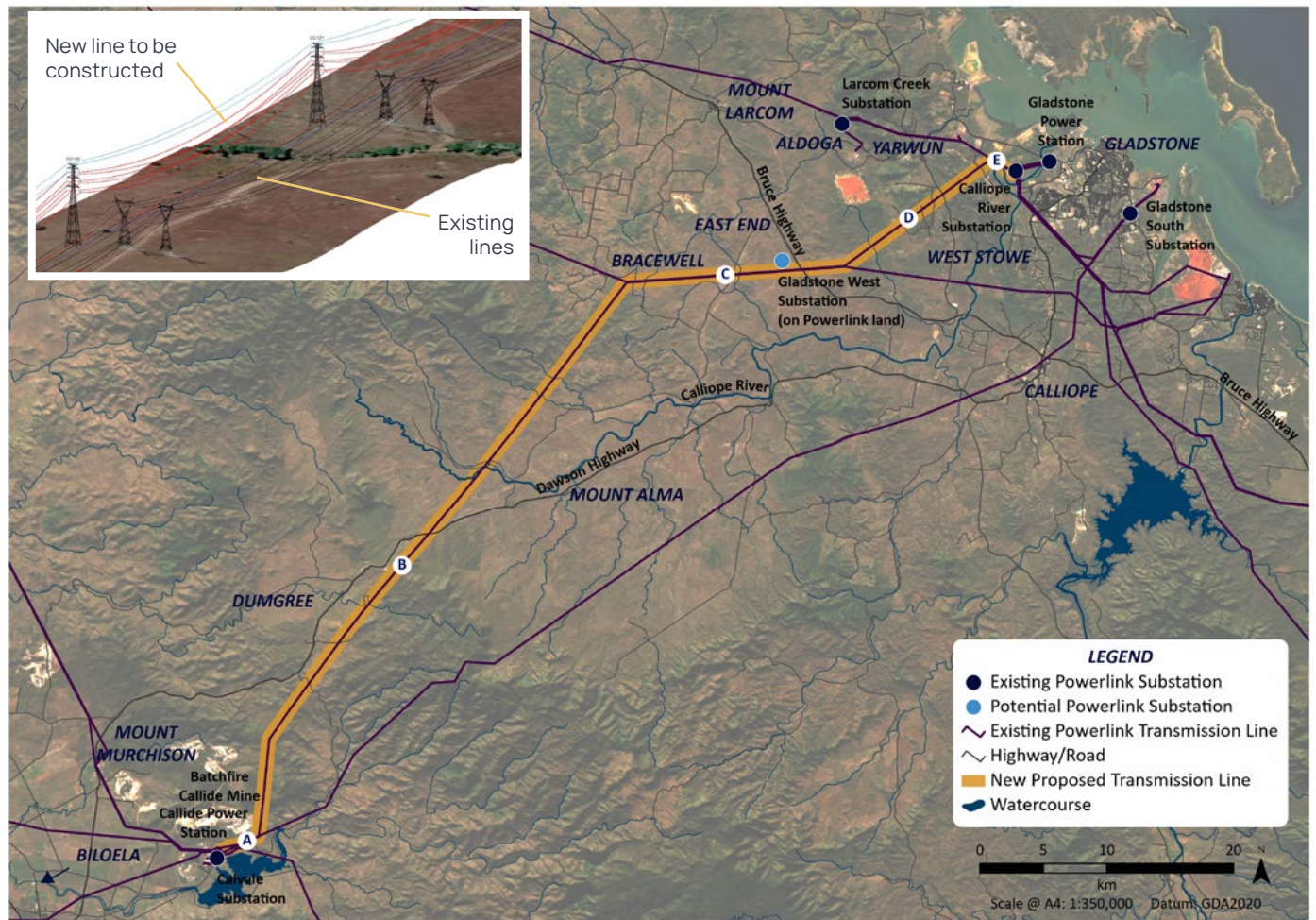


SAFE FOR LIFE
Everyone. Everywhere. Everyday.

Project map

The map below shows the project alignment, between Powerlink's Calvale and Calliope River substations. For planning purposes, the project has been divided into five sections (A, B, C, D and E), with easement widening required for the entirety of Section C and minor areas in Sections A and E.

The new line will be co-located beside existing transmission lines, reducing social, environmental and economic impacts compared to constructing in a new location. Towers will be around 60 meters high, depending on terrain and design requirements. This is taller than the existing towers. This is to comply with current design standards and safety clearances for this type of 275kv, double-circuit transmission tower.



Map showing the project alignment. The inset shows a draft design render showing the new Calvale to Calliope River transmission line (on the left), beside the existing transmission lines in Section C. The inset is indicative only and subject to change.

Previous consultation

Powerlink is committed to effective and genuine engagement. On this project, we have worked with landholders, Traditional Owner groups and other stakeholders since early 2023, to understand potential impacts and how they can be reduced or avoided.

In June 2024, we published a Draft Corridor Selection Report for the project. The community and other stakeholders were invited to provide feedback over a four-week consultation period. We reviewed and considered all feedback, and responded to key feedback themes in the Final Corridor Selection Report, published in August 2024.

Since then, we have worked with landholders to complete the remaining field studies to inform detailed design and the approvals process. We provide regular project updates through newsletters and email updates. To register for updates, visit the project web page at powerlink.com.au/calvale-calliope.

What's in the project's MID Proposal Report?

The MID Proposal Report for this project includes detailed reports that, together, make up our application for planning approval. It describes in detail the findings of more than 18 months of desktop and detailed flora and fauna field studies, and social and cultural heritage assessments.

The MID Proposal Report also includes reports that detail the findings and proposed mitigations for other matters, including construction traffic impacts, noise and vibration, landscape and visual amenity, bushfire risks and more.

You can provide feedback on any part of the MID Proposal Report. The table below describes where to find out more about topics addressed in the Environmental Assessment component of the MID Proposal Report in Chapter 6.

Key topics of the MID Proposal Report

Ecology (flora and fauna)	6.1 and Appendix F
Noise and vibration	6.2 and Appendix G
Traffic	6.3 and Appendix H
Landscape and visual	6.4 and Appendix I
Surface water	6.5 and Appendix J
Bushfire	6.6
Electric and magnetic fields	6.7
Agriculture	6.8
Hazards, health and safety	6.9
Environmental management (including air quality, biosecurity and other matters)	6.10 and Appendix K

How to view the MID Proposal Report

Printed copies of the MID Proposal Report are available at:

- Gladstone City Library, 39 Goondoon St, Gladstone Central
- Banana Shire Library, 71 Grevillea St, Biloela
- Mount Larcom Rural Transaction Centre, 47 Raglan St, Mount Larcom.

An electronic copy of the MID Proposal Report is available on the project's web page at powerlink.com.au/calvale-calliope. Please contact us if you require any assistance accessing the report.

Find out more and ask questions

Powerlink team members will be available to talk with the community at four community information drop-in sessions. Stop by at any time during these sessions to find out more and ask questions about this project:

Biloela Civic Centre	Supper Room, 96 Rainbow Street, Biloela	Tuesday 9 December, 3pm – 6pm
Mount Larcom Hall	47 Raglan Street, Mt Larcom	Wednesday 10 December, 10am – 1pm
Yarwun Hall	44 Butler Street, Yarwun	Thursday 11 December, 8.30am – 11.30am
Gladstone City Library	Meeting Room, 39 Goondoon Street, Gladstone	Thursday 11 December, 1.30pm – 3.30pm

You can contact us any time about the Calvale to Calliope River Transmission Line Reinforcement Project. However, if your questions or feedback relate to the MID Proposal Report, please contact us by 5pm, Monday 22 December 2025. You can contact the Powerlink project team by:

- visiting our [project web page](#) and completing the [online feedback form](#)
- emailing cqprojects@powerlink.com.au
- phoning 1800 635 369 (Monday to Friday, 7.30am – 5pm).

How to make a formal submission

You can make a formal submission on the MID Proposal Report (MID-1025-0975) directly to DSDIP online at www.planning.qld.gov.au/planning-framework/infrastructure-planning/ministerial-infrastructure-designations, by email infrastructuredesignation@dsdilgp.qld.gov.au, or via mail PO Box 15009, City East, QLD, 4002.

Federal Government approvals

Powerlink takes our environmental responsibilities seriously and we are committed to managing potential environmental impacts resulting from our proposed activities for this project.

This project also needs approval from the Federal Government under the *Environment Protection and Biodiversity Conservation Act 1999* (EPBC Act). We are preparing a Public Environment Report for this, which will be available for public comment early next year.

Gladstone Project

Powerlink needs to reinforce our transmission network in the Gladstone area over the next 10 years. This is important to ensure an ongoing reliable and secure electricity supply to the region, as the largest load centre outside of South East Queensland.

Powerlink plans to deliver a critical program of transmission upgrades, known as the Gladstone Project. This is to ensure the electricity network remains safe and reliable as the region prepares for the eventual retirement of the Gladstone Power Station, and heavy industry moves toward electrification of their operations increasing demand on the network.

For more information visit powerlink.com.au/gladstoneproject.

Synchronous condensers

The MID Proposal Report includes provision for up to two synchronous condensers at Calliope River Substation, among other components. This option is still being investigated and locations for synchronous condensers are not confirmed. This has been included in our approval documentation to allow flexibility and streamline approval requirements, in case this location is selected. We expect to engage with communities on proposed synchronous condenser locations in early 2026.

What is a Ministerial Infrastructure Designation?

A Ministerial Infrastructure Designation, or MID, is a state approvals process for assessing certain types of community supporting infrastructure. The MID process is managed by the Queensland Government, through DSDIP, with input from other government agencies.

How is feedback considered?

DSDIP will review all formal submissions made on the MID Proposal Report and share key themes with Powerlink. Feedback provided directly to Powerlink will be reviewed and responded to by our project team. After the consultation period is over, we will provide an update summarising feedback, how it has been considered and next steps.

Further information

If you have any questions about the Calvale to Calliope River Transmission Line Reinforcement Project, please contact us by:

Online: powerlink.com.au/calvale-calliope

Email: cqprojects@powerlink.com.au

Phone: 1800 635 369
(Monday to Friday, 7.30am – 5pm).

Completing the contact form on the project webpage by scanning the QR code.

