

Legend

- Stage 1 Construction Zone
- Stage 1 Indicative Clearing Footprint
- Project Properties
- State Controlled Roads
- Rail
- Watercourse / Drainage Features
- Julia Creek Dunnart Sighting (BASE)
- Julia Creek Dunnart Habitat

Scale @ A3: 1 : 5000

0 100 200 m

Datum: GDA2020 Job Number: J0105.1

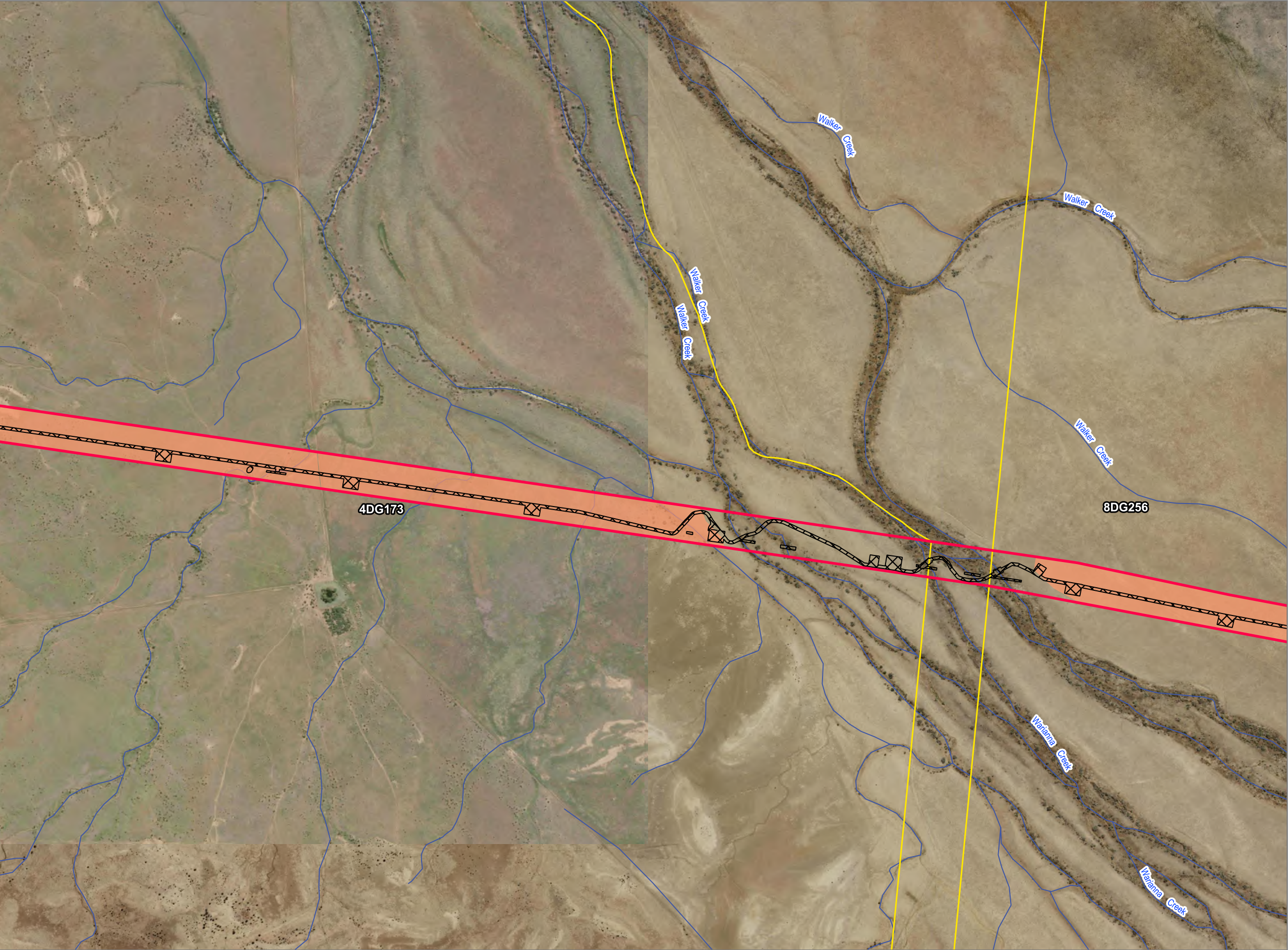
©2025 BASE CG, © 2025 ESRI Basemaps

Base Consulting Group has provided this information as a general reference source only and not for other purposes. Base Consulting Group makes no representation and gives no warranty about the accuracy, reliability, completeness or suitability for any particular purpose of the information. This map is not to be reproduced without the expressed permission of Base Consulting Group.

DATA SOURCE:
QSPATIAL 2025; The State of Queensland (Department of Resources) 2025; Esri, Nearmap, DigitalGlobe, GeoEye, i-cubed, USDA FSA, USGS, AEX, Getmapping, Aerogrid, IGN, IGP, swisstopo, and the GIS User Community;

Inset Map

Map showing the location of the project area within the region of Julia Creek Dunnart Habitat. The inset map includes labels for NELIA, MAXWELTON, RICHMOND, MARATHON, HUGHENDEN, and STAMFORD.



Legend

Stage 1 Construction Zone

Stage 1 Indicative Clearing Footprint

Project Properties

State Controlled Roads

Rail

Watercourse / Drainage Features

Julia Creek Dunnart Sighting (BASE)

Julia Creek Dunnart Habitat

Scale @ A3: 1 : 10000

0

300

600 m

Datum: GDA2020

Job Number: J0105.1

©2025 BASE CG, © 2025 ESRI Basemaps

Base Consulting Group has provided this information as a general reference source only and not for other purposes. Base Consulting Group makes no representation and gives no warranty about the accuracy, reliability, completeness or suitability for any particular purpose of the information. This map is not to be reproduced without the expressed permission of Base Consulting Group.

DATA SOURCE:

QSPATIAL 2025; The State of Queensland (Department of Resources) 2025; Esri, Nearmap, DigitalGlobe, GeoEye, i-cubed, USDA FSA, USGS, AEX, Getmapping, Aerogrid, IGN, IGP, swisstopo, and the GIS User Community;

REV D | Last Updated 28/03/2025



Legend

Stage 1 Construction Zone

Stage 1 Indicative Clearing Footprint

Project Properties

State Controlled Roads

Rail

Watercourse / Drainage Features

Julia Creek Dunnart Sighting (BASE)

Julia Creek Dunnart Habitat

Scale @ A3: 1 : 10000

0300600 m

Datum: GDA2020Job Number: J0105.1

©2025 BASE CG, © 2025 ESRI Basemaps

Base Consulting Group has provided this information as a general reference source only and not for other purposes. Base Consulting Group makes no representation and gives no warranty about the accuracy, reliability, completeness or suitability for any particular purpose of the information. This map is not to be reproduced without the expressed permission of Base Consulting Group.

DATA SOURCE:
QSPATIAL 2025; The State of Queensland (Department of Resources) 2025; Esri, Nearmap, DigitalGlobe, GeoEye, i-cubed, USDA FSA, USGS, AEX, Getmapping, Aerogrid, IGN, IGP, swisstopo, and the GIS User Community;



Legend

- Stage 1 Construction Zone
- Stage 1 Indicative Clearing Footprint
- Project Properties
- State Controlled Roads
- Rail
- Watercourse / Drainage Features
- Julia Creek Dunnart Sighting (BASE)
- Julia Creek Dunnart Habitat

Scale @ A3: 1 : 10000

0 300 600 m

Datum: GDA2020 Job Number: J0105.1

©2025 BASE CG, © 2025 ESRI Basemaps

Base Consulting Group has provided this information as a general reference source only and not for other purposes. Base Consulting Group makes no representation and gives no warranty about the accuracy, reliability, completeness or suitability for any particular purpose of the information. This map is not to be reproduced without the expressed permission of Base Consulting Group.

DATA SOURCE:
QSPATIAL 2025; The State of Queensland (Department of Resources) 2025; Esri, Nearmap, DigitalGlobe, GeoEye, i-cubed, USDA FSA, USGS, AEX, Getmapping, Aerogrid, IGN, IGP, swisstopo, and the GIS User Community;



Legend

- Stage 1 Construction Zone
- Stage 1 Indicative Clearing Footprint
- Project Properties
- State Controlled Roads
- Rail
- Watercourse / Drainage Features
- Julia Creek Dunnart Sighting (BASE)
- Julia Creek Dunnart Habitat

Scale @ A3: 1 : 10000

0 300 600 m

Datum: GDA2020 Job Number: J0105.1

©2025 BASE CG, © 2025 ESRI Basemaps

Base Consulting Group has provided this information as a general reference source only and not for other purposes. Base Consulting Group makes no representation and gives no warranty about the accuracy, reliability, completeness or suitability for any particular purpose of the information. This map is not to be reproduced without the expressed permission of Base Consulting Group.

DATA SOURCE:
QSPATIAL 2025; The State of Queensland (Department of Resources) 2025; Esri, Nearmap, DigitalGlobe, GeoEye, i-cubed, USDA FSA, USGS, AEX, Getmapping, Aerogrid, IGN, IGP, swisstopo, and the GIS User Community;



Legend

- Stage 1 Construction Zone
- Stage 1 Indicative Clearing Footprint
- Project Properties
- State Controlled Roads
- Rail
- Watercourse / Drainage Features
- Julia Creek Dunnart Sighting (BASE)
- Julia Creek Dunnart Habitat

Scale @ A3: 1 : 10000

0 300 600 m

Datum: GDA2020 Job Number: J0105.1

©2025 BASE CG, © 2025 ESRI Basemaps

Base Consulting Group has provided this information as a general reference source only and not for other purposes. Base Consulting Group makes no representation and gives no warranty about the accuracy, reliability, completeness or suitability for any particular purpose of the information. This map is not to be reproduced without the expressed permission of Base Consulting Group.

DATA SOURCE:
QSPATIAL 2025; The State of Queensland (Department of Resources) 2025; Esri, Nearmap, DigitalGlobe, GeoEye, i-cubed, USDA FSA, USGS, AEX, Getmapping, Aerogrid, IGN, IGP, swisstopo, and the GIS User Community;