

CopperString

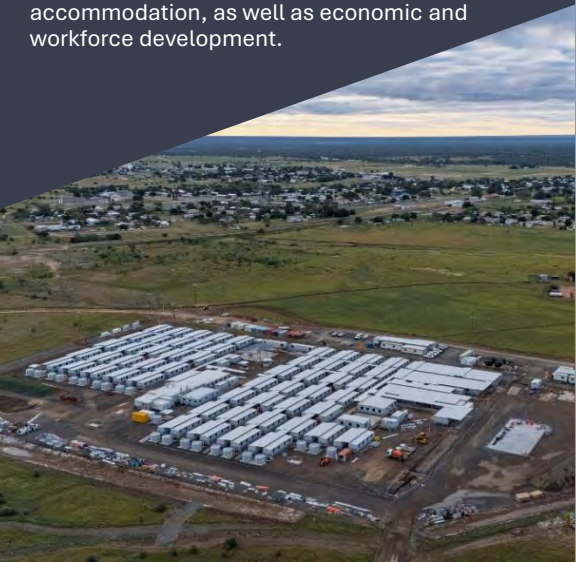
CopperString supports North and North West Queensland **by delivering affordable, reliable and sustainable energy.**

With the first stage of project delivery set to be complete by 2032 (subject to approvals), CopperString will connect the region to the National Electricity Market (NEM), enabling new generation, firming, industrial development and economic growth.



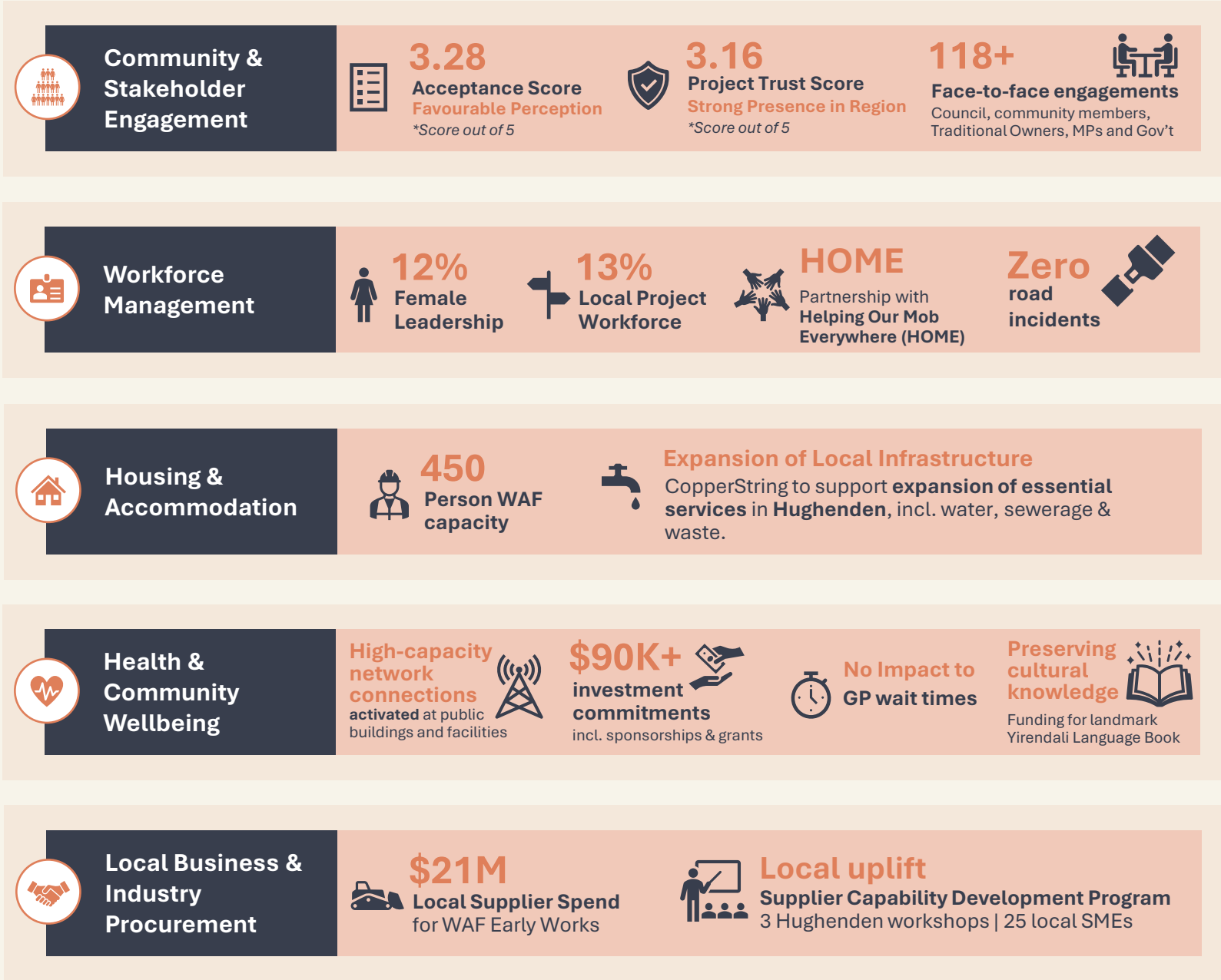
Construction activities formally commenced at the Hughenden Workforce Accommodation Facility (WAF) in **July 2024**. Powerlink is finalising construction of the Hughenden WAF. It is expected to be operational later this year to initially support workforce requirements for preliminary works at the Hughenden Hub.

Community legacy along the CopperString corridor remains a high priority. An expanded \$50 million **Community Benefits Fund** announced by the Queensland Government will deliver critical projects to local communities including community infrastructure, and housing and accommodation, as well as economic and workforce development.



SOCIAL IMPACT MANAGEMENT SNAPSHOT – JULY 2024 TO JUNE 2025

In the 12 months since the sod-turning at the Hughenden WAF, Powerlink has implemented measures to manage project impacts and deliver outcomes that support community wellbeing, housing and accommodation and economic participation, and cultural heritage in the Flinders region.



What we've heard

Clear desire for consistent updates and two-way communication
ensuring transparency and timely information sharing.

Culturally aware recruitment, wellbeing programs, and local Indigenous business engagement are valued
prompting adjustments to hiring, consultation, and safety practices.

Housing availability remains a priority
protecting accommodation for residents and tourists during construction and exploring options for WAF reuse post-project.

Concerns about land access, noise, and operational impacts
with a focus on minimising disruption to farming and property activities.

Local businesses want practical support to compete for work
including tailored feedback, mentoring, and procurement processes that reduce barriers for SMEs and Indigenous suppliers.