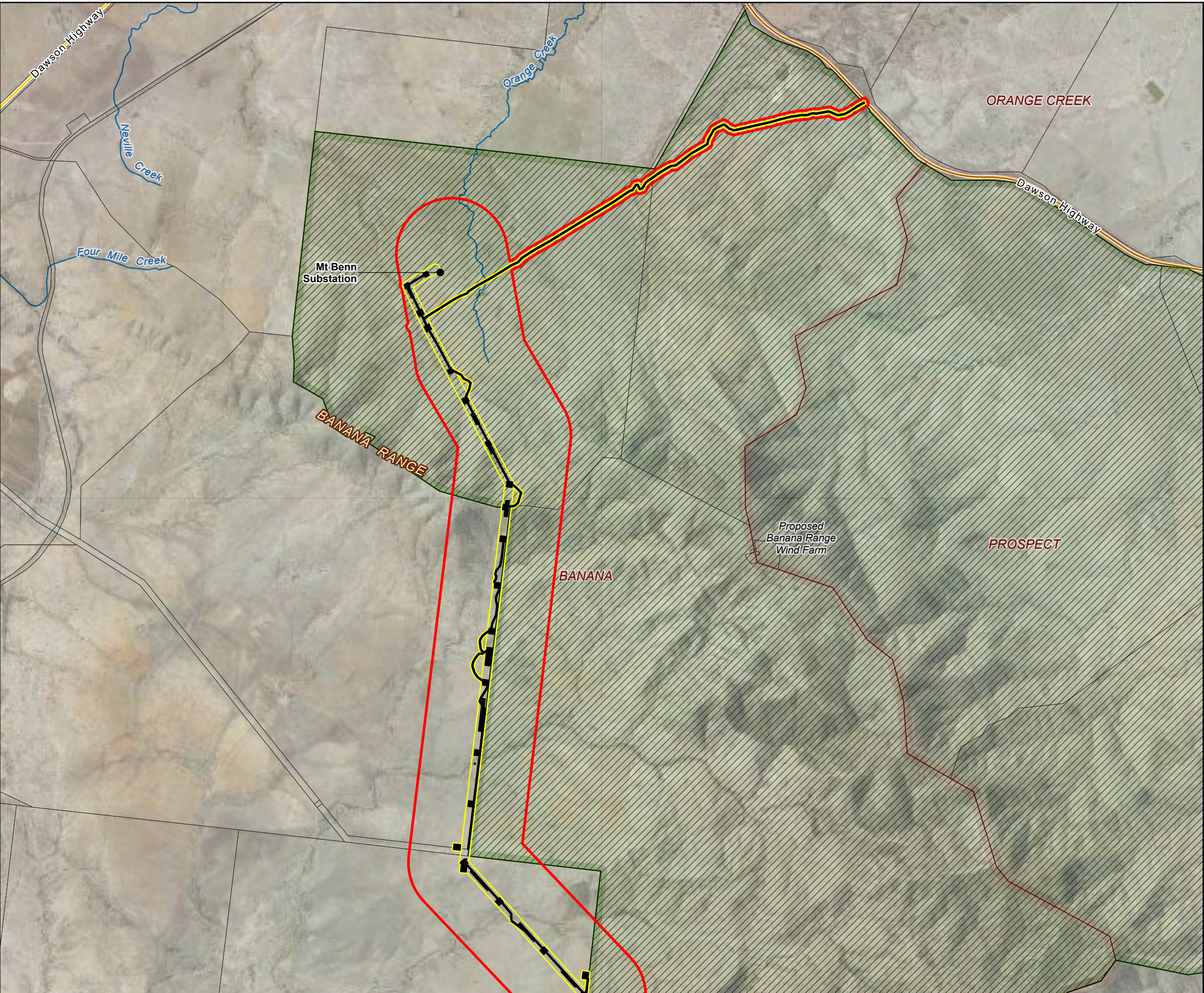


Appendix B

Project area and Disturbance footprint





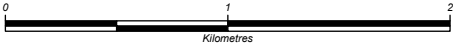
PS218956 Theodore Wind Farm
Connection Project

Appendix B
Project area and project
disturbance footprint

Page 1 of 7

Legend

- Watercourses
- Highway and main roads
- Study area
- Project area
- Disturbance footprint
- Proposed Banana Range Wind Farm
- Locality boundary
- Cadastre

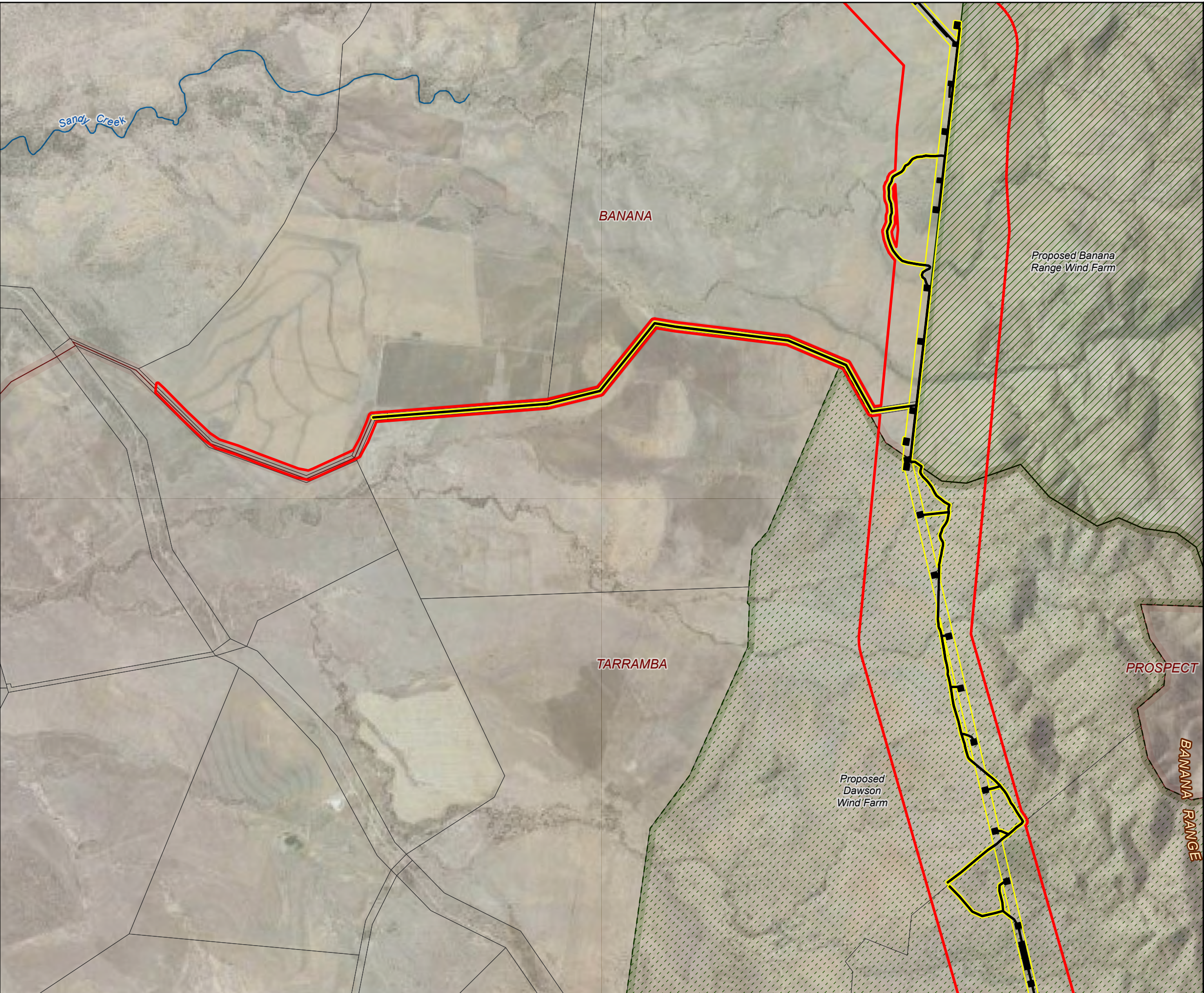


Coordinate system: GDA2020 MGA Zone 56
Scale ratio correct when printed at A3

1:34,000 Date: 1/10/2025

Data sources: DELWP, Geoscience Australia, Queensland Government, WSP

© WSP Australia Pty Ltd ("WSP") Copyright in the drawings, information and data recorded ("the information") is the property of WSP. This document and the information are solely for the use of the authorised recipient and this document may not be used, copied or reproduced in whole or part for any purpose other than that which it was supplied by WSP. WSP makes no representation, undertakes no duty and accepts no responsibility to any third party who may use or rely upon this document or the information. NCSI Certified Quality System to ISO 9001. © APPROVED FOR AND ON BEHALF OF WSP Australia Pty Ltd.



PS218956 Theodore Wind Farm
Connection Project

Appendix B
Project area and project
disturbance footprint

Page 2 of 7

Legend

- Watercourses
- Study area
- Project area
- Disturbance footprint
- Proposed Banana Range Wind Farm
- Proposed Dawson Wind Farm
- Locality boundary
- Cadastre

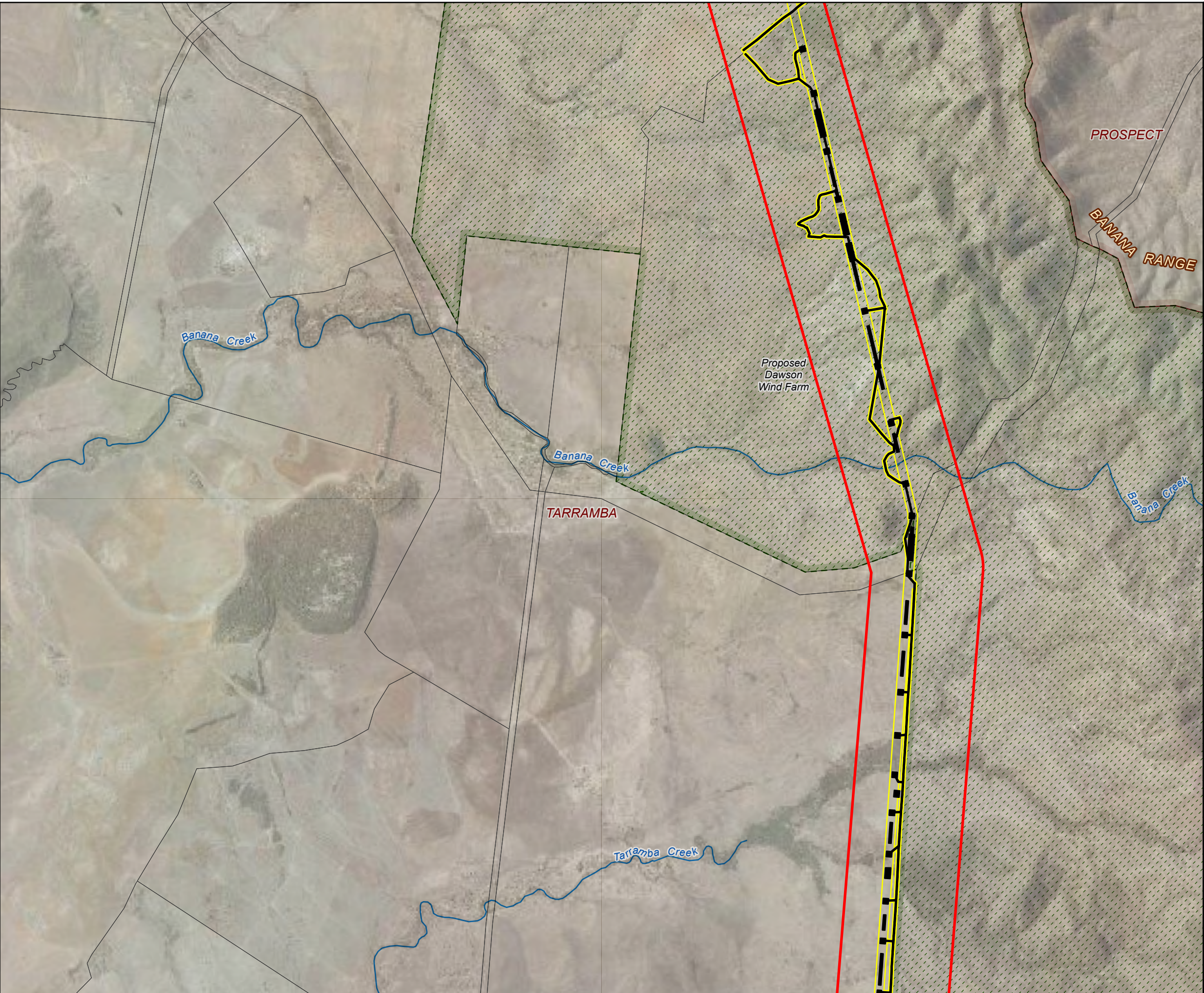


Coordinate system: GDA2020 MGA Zone 56
Scale ratio correct when printed at A3

1:34,000 Date: 1/10/2025

Data sources: DELWP, Geoscience Australia, Queensland Government, WSP

© WSP Australia Pty Ltd ("WSP") Copyright in the drawings, information and data recorded ("the information") is the property of WSP. This document and the information are solely for the use of the authorised recipient and this document may not be used, copied or reproduced in whole or part for any purpose other than that which it was supplied by WSP. WSP makes no representation, undertakes no duty and accepts no responsibility to any third party who may use or rely upon this document or the information. NCSI Certified Quality System to ISO 9001. © APPROVED FOR AND ON BEHALF OF WSP Australia Pty Ltd.

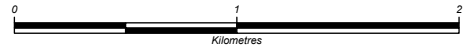


PS218956 Theodore Wind Farm
Connection Project

Appendix B
Project area and project
disturbance footprint

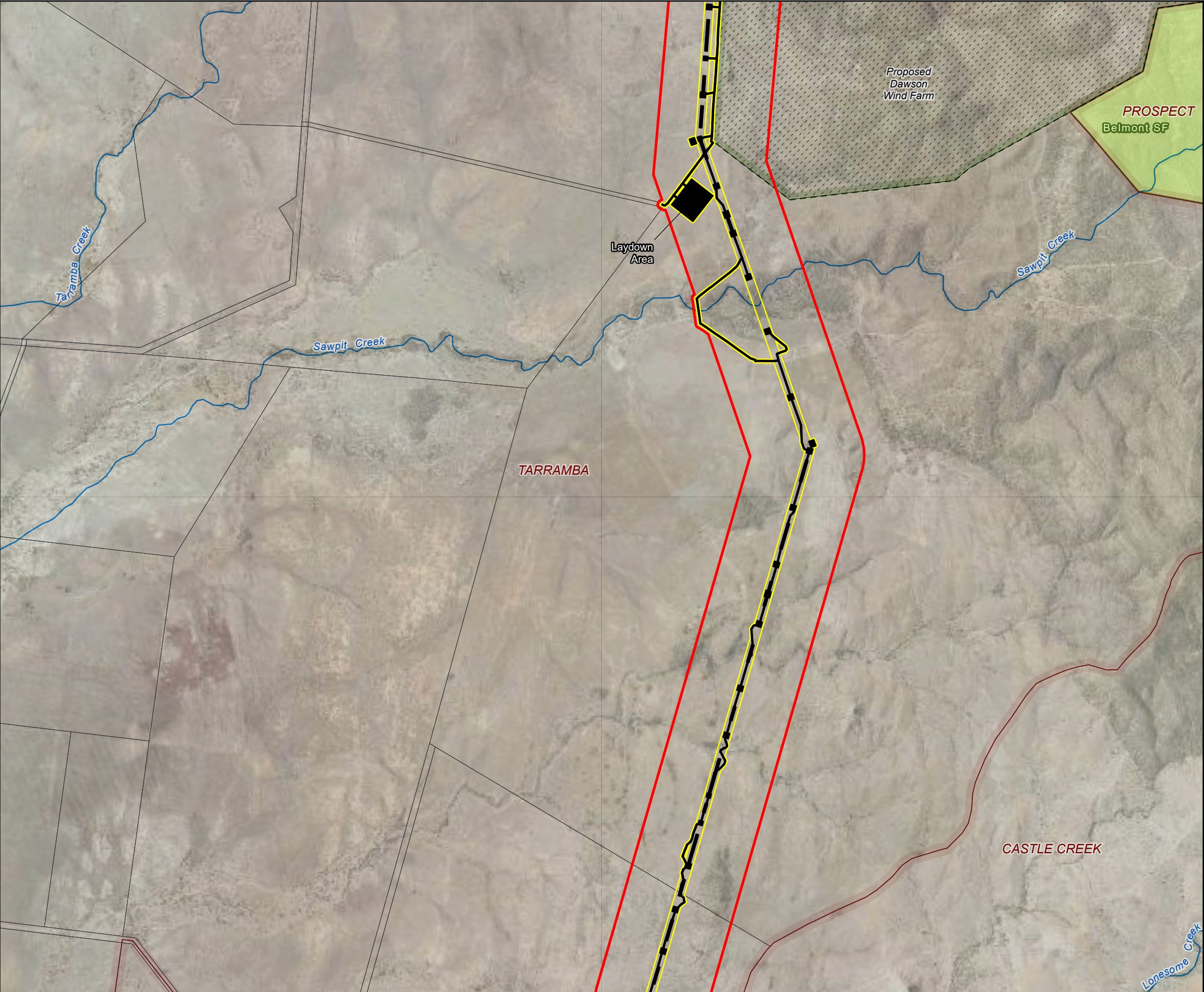
Legend

- Watercourses
- Study area
- Project area
- Disturbance footprint
- Proposed Dawson Wind Farm
- Locality boundary
- Cadastre



Coordinate system: GDA2020 MGA Zone 56
Scale ratio correct when printed at A3
1:34,000 Date: 1/10/2025

Data sources: DELWP, Geoscience Australia, Queensland Government, WSP
© WSP Australia Pty Ltd ("WSP") Copyright in the drawings, information and data recorded ("the information") is the property of WSP. This document and the information are solely for the use of the authorised recipient and this document may not be used, copied or reproduced in whole or part for any purpose other than that which it was supplied by WSP. WSP makes no representation, undertakes no duty and accepts no responsibility to any third party who may use or rely upon this document or the information. NCSI Certified Quality System to ISO 9001. © APPROVED FOR AND ON BEHALF OF WSP Australia Pty Ltd.

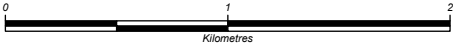


PS218956 Theodore Wind Farm
Connection Project

Appendix B
Project area and project
disturbance footprint

Legend

- Watercourses
- Study area
- Project area
- Disturbance footprint
- Proposed Dawson Wind Farm
- Locality boundary
- State Forests
- Cadastre



Coordinate system: GDA2020 MGA Zone 56
Scale ratio correct when printed at A3

1:34,000 Date: 1/10/2025

Data sources: DELWP, Geoscience Australia, Queensland Government, WSP

© WSP Australia Pty Ltd ("WSP") Copyright in the drawings, information and data recorded ("the information") is the property of WSP. This document and the information are solely for the use of the authorised recipient and this document may not be used, copied or reproduced in whole or part for any purpose other than that which it was supplied by WSP. WSP makes no representation, undertakes no duty and accepts no responsibility to any third party who may use or rely upon this document or the information. NCSI Certified Quality System to ISO 9001. © APPROVED FOR AND ON BEHALF OF WSP Australia Pty Ltd.



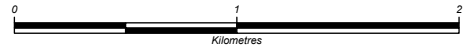
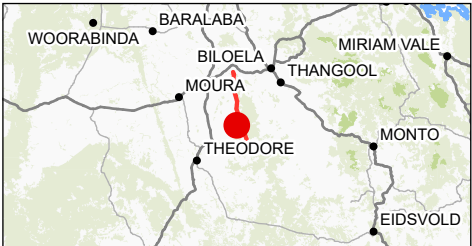
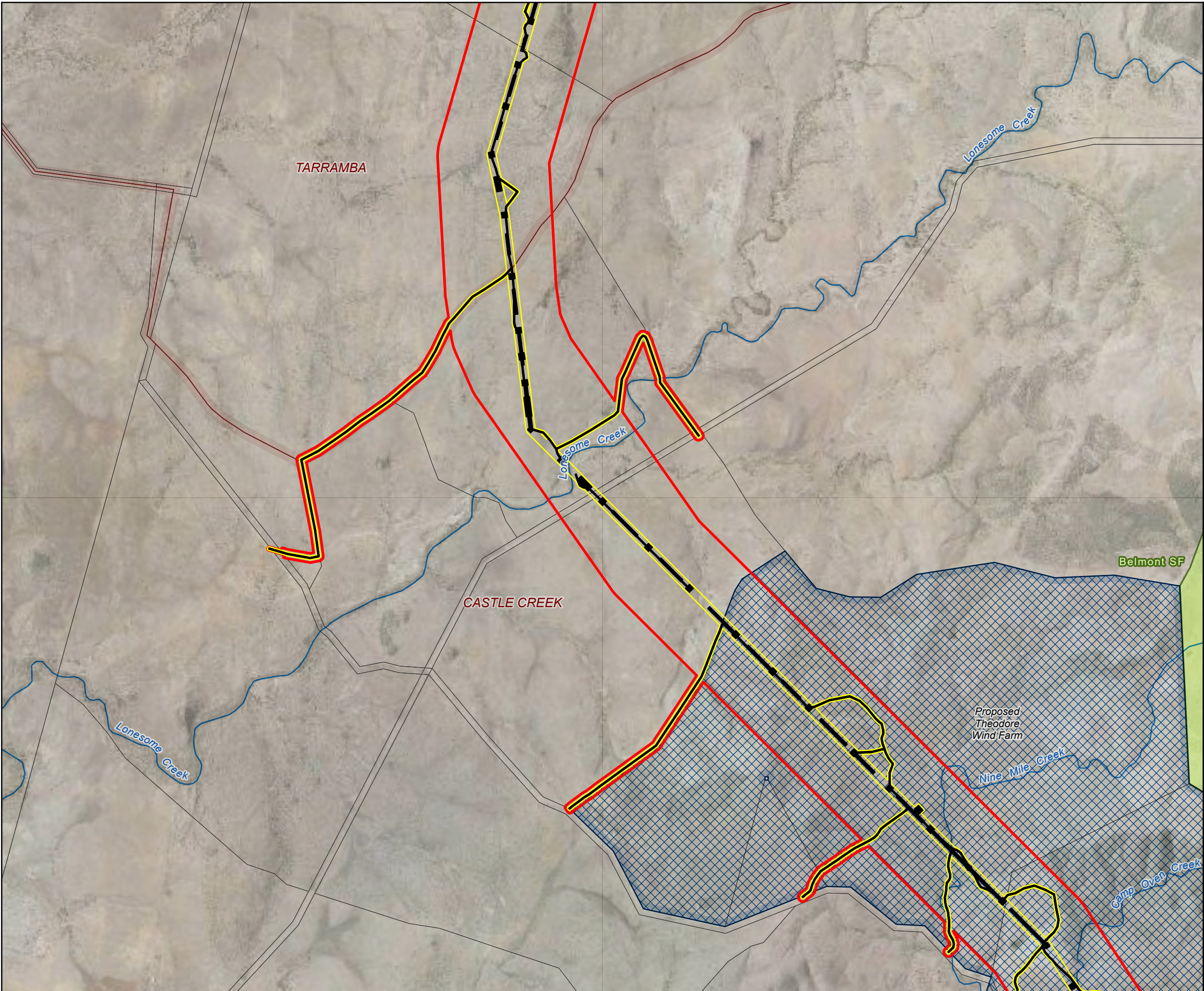
PS218956 Theodore Wind Farm
Connection Project

Appendix B
Project area and project
disturbance footprint

Page 5 of 7

Legend

- Watercourses
- Study area
- Project area
- Disturbance footprint
- Proposed Theodore Wind Farm
- Locality boundary
- State Forests
- Cadastre



Coordinate system: GDA2020 MGA Zone 56
Scale ratio correct when printed at A3
1:34,000 Date: 1/10/2025

Data sources: DELWP, Geoscience Australia, Queensland Government, WSP
© WSP Australia Pty Ltd ("WSP") Copyright in the drawings, information and data recorded ("the information") is the property of WSP. This document and the information are solely for the use of the authorised recipient and this document may not be used, copied or reproduced in whole or part for any purpose other than that which it was supplied by WSP. WSP makes no representation, undertakes no duty and accepts no responsibility to any third party who may use or rely upon this document or the information. NCSI Certified Quality System to ISO 9001. © APPROVED FOR AND ON BEHALF OF WSP Australia Pty Ltd.



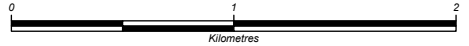
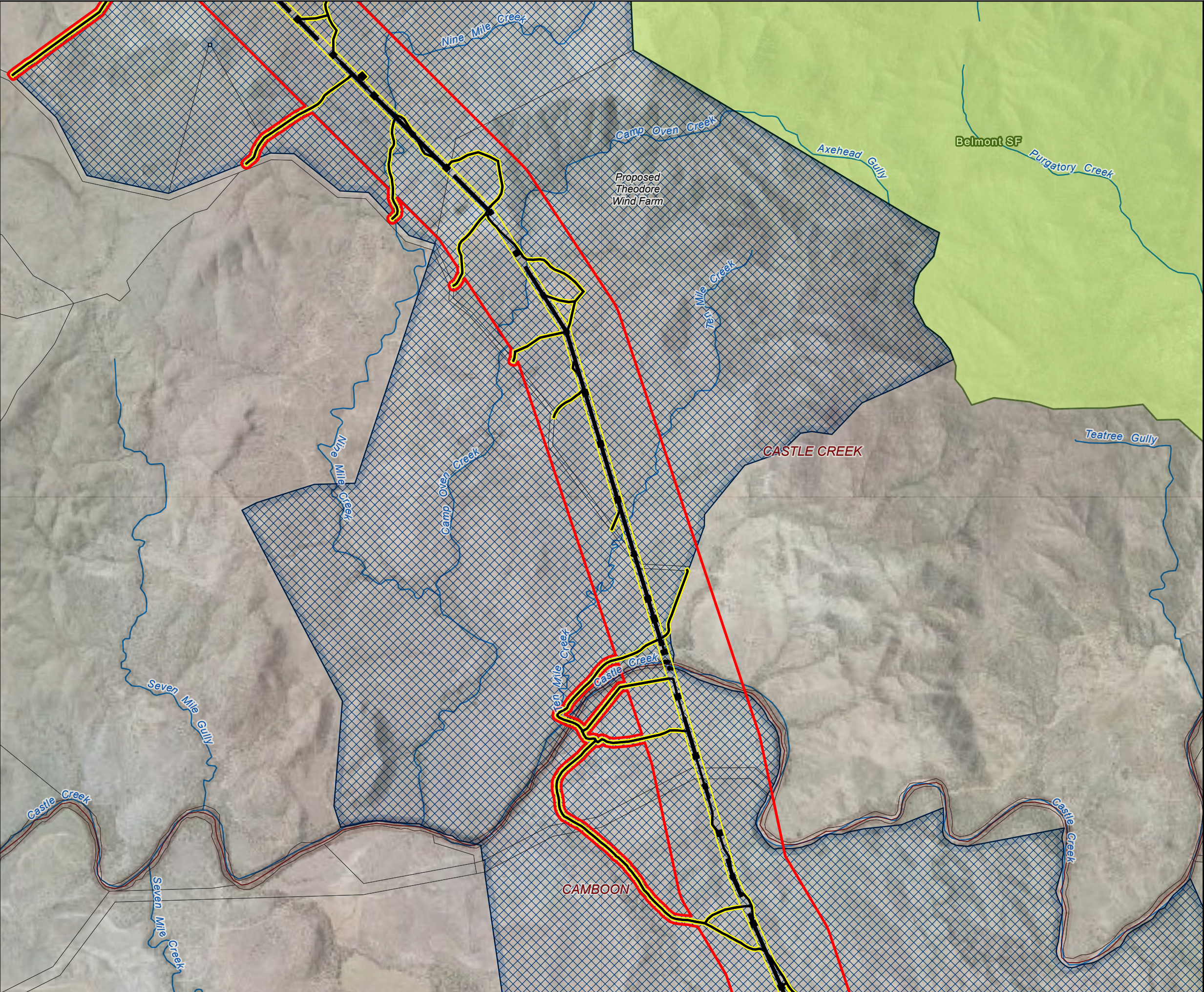
PS218956 Theodore Wind Farm
Connection Project

Appendix B
Project area and project
disturbance footprint

Page 6 of 7

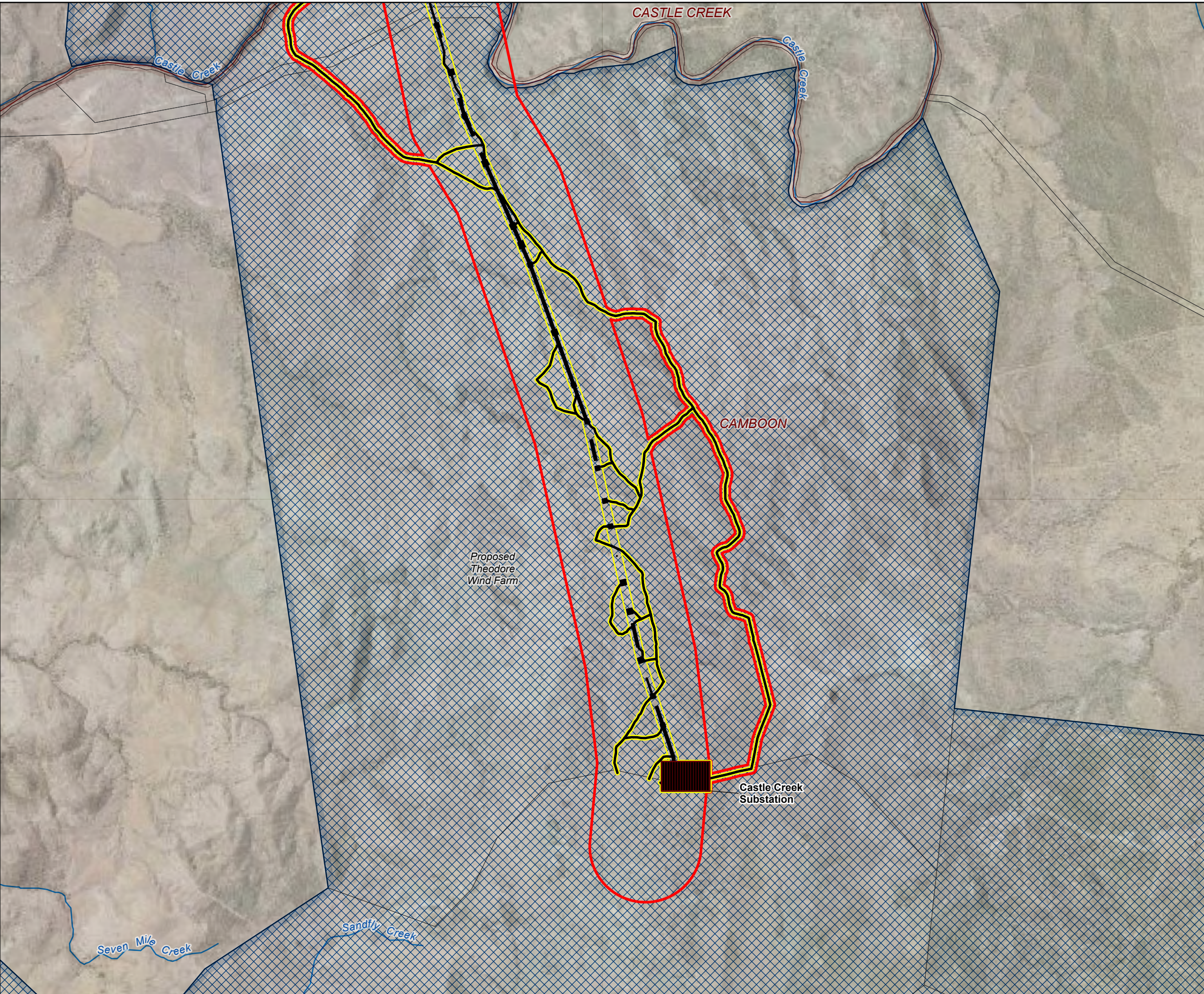
Legend

- Watercourses
- Study area
- Project area
- Disturbance footprint
- Proposed Theodore Wind Farm
- Locality boundary
- State Forests
- Cadastre



Coordinate system: GDA2020 MGA Zone 56
Scale ratio correct when printed at A3
1:34,000
Date: 1/10/2025

Data sources: DELWP, Geoscience Australia, Queensland Government, WSP
© WSP Australia Pty Ltd ("WSP") Copyright in the drawings, information and data recorded ("the information") is the property of WSP. This document and the information are solely for the use of the authorised recipient and this document may not be used, copied or reproduced in whole or part for any purpose other than that which it was supplied by WSP. WSP makes no representation, undertakes no duty and accepts no responsibility to any third party who may use or rely upon this document or the information. NCSI Certified Quality System to ISO 9001. © APPROVED FOR AND ON BEHALF OF WSP Australia Pty Ltd.



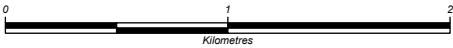
PS218956 Theodore Wind Farm
Connection Project

Appendix B
Project area and project
disturbance footprint

Page 7 of 7

Legend

- Watercourses
- Study area
- Project area
- Disturbance footprint
- Proposed Theodore Wind Farm
- Castle Creek Substation
- Locality boundary
- Cadastre



Coordinate system: GDA2020 MGA Zone 56
Scale ratio correct when printed at A3

1:34,000 Date: 1/10/2025

Data sources: DELWP, Geoscience Australia, Queensland Government, WSP

© WSP Australia Pty Ltd ("WSP") Copyright in the drawings, information and data recorded ("the information") is the property of WSP. This document and the information are solely for the use of the authorised recipient and this document may not be used, copied or reproduced in whole or part for any purpose other than that which it was supplied by WSP. WSP makes no representation, undertakes no duty and accepts no responsibility to any third party who may use or rely upon this document or the information. NCSI Certified Quality System to ISO 9001. © APPROVED FOR AND ON BEHALF OF WSP Australia Pty Ltd.