

# Theodore Wind Farm Connection Project

POWERLINK QUEENSLAND

## About the project

The Theodore Wind Farm Connection Project is currently in the planning stage. Powerlink has been engaged by RWE Renewables Australia (RWE) to connect their proposed Theodore Wind Farm to the electricity grid.

The connection project will include building a new double circuit 275kV transmission line from the Castle Creek Substation within the Theodore Wind Farm, to the proposed future Powerlink substation at Mt Benn near Banana (which forms part of the Banana Range Wind Farm Connection Project - also currently in the planning phase).

## Public consultation

Powerlink is progressing the project's planning approval from the Queensland Government, under the Ministerial Infrastructure Designation (MID) process.

The project's MID Proposal Report was lodged with the Department of State Development, Infrastructure and Planning (DSDIP) in December 2025, and DSDIP has now initiated consultation on the report by writing to the relevant local government and impacted landholders to invite submissions.

The MID Proposal Report looks at the potential social, environmental and economic impacts of building, operating and maintaining the project. It also outlines ways to avoid minimise or mitigate these impacts.

We also invite landholders, Traditional Owner groups, the community and other stakeholders to view the project's MID Proposal Report, ask questions and provide their feedback on the report. Details on how to view the MID Proposal Report are provided in this newsletter.

Consultation on the project's MID Proposal Report ends at 5pm on Tuesday 24 March 2026.

*Powerlink acknowledges the Traditional Owners and their custodianship of the lands and waters of Queensland and in particular, the lands on which we operate. We pay our respect to their Ancestors, Elders and knowledge holders and recognise their deep history and ongoing connection to Country.*



[powerlink.com.au/theodore](https://powerlink.com.au/theodore)



**SAFE FOR LIFE**  
Everyone. Everywhere. Everyday.

## What is a Ministerial Infrastructure Designation?

A Ministerial Infrastructure Designation (MID) is a state approvals process for assessing certain types of community supporting infrastructure. The MID process is managed by the Queensland Government, through DSDIP, with input from other government agencies.

## How to view the MID Proposal Report

Printed copies of the MID Proposal Report are available at:

- Theodore Library, 33 The Boulevard, Theodore
- Banana Shire Council Customer Centre, 62 Valentine Plains Road, Biloela
- An electronic copy of the MID Proposal Report is available on the project's webpage at [powerlink.com.au/theodore](https://powerlink.com.au/theodore). Please contact us if you require any assistance accessing the report.

## Find out more and ask questions

Powerlink team members will be available to talk with the community at two upcoming community information drop-in sessions. You are welcome to stop by at any time during these sessions and ask questions about the project and the MID Proposal Report.

Location	Date	Time
Dawson Catchment Coordinating Association, Theodore Community Room, 60 The Boulevard, Theodore	Thursday 12 March 2026	3.30pm - 6.30pm
Sutherland Hall, 32 Bowen Street, Banana	Friday 13 March 2026	9am - 12pm

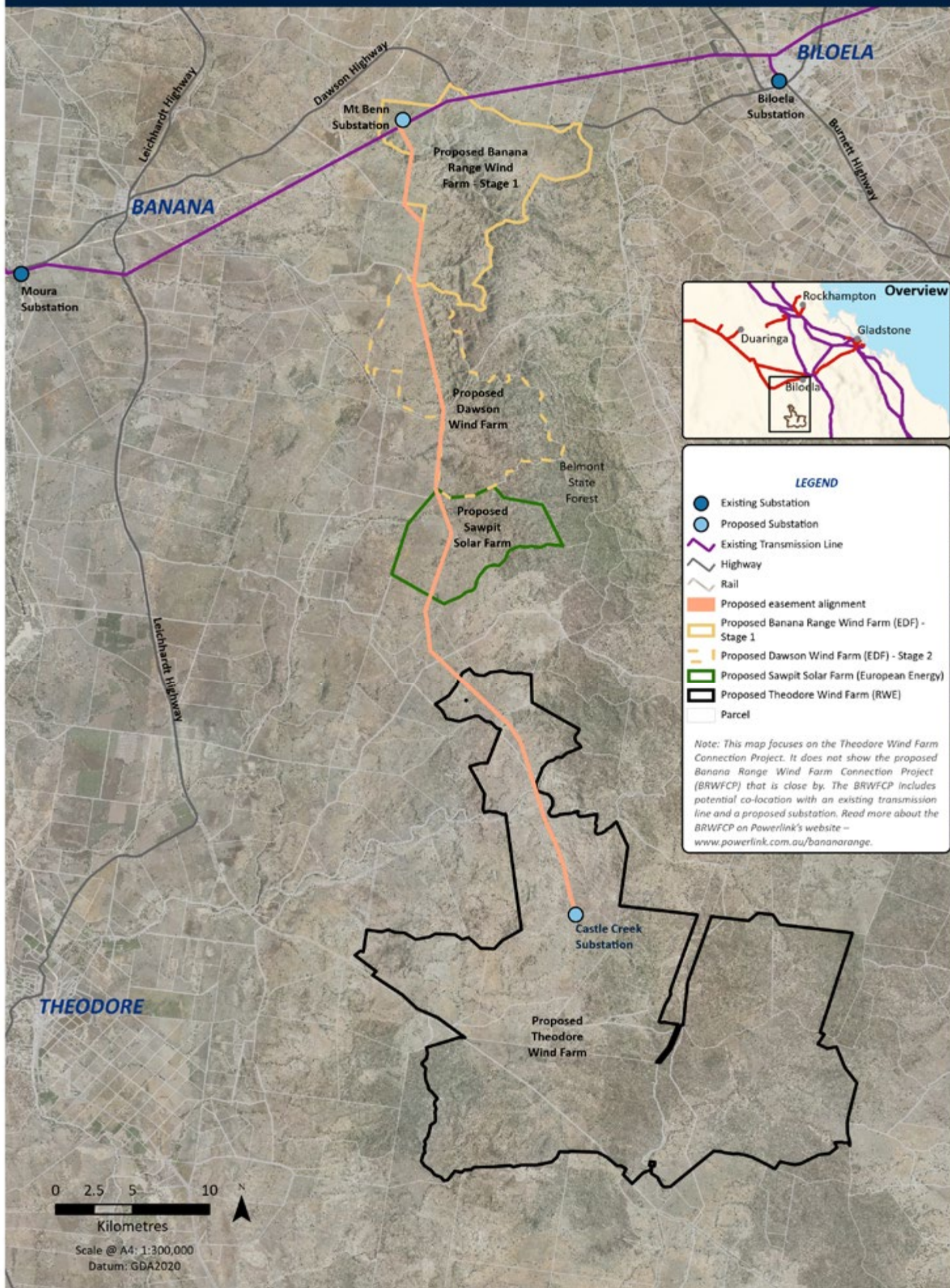
You can contact us any time about the Theodore Wind Farm Connection Project. However, if you have any questions or feedback that relates to the MID Proposal Report, please contact us by 5pm on Tuesday 24 March 2026. You can contact our Powerlink project team by:

- Emailing [theodore@powerlink.com.au](mailto:theodore@powerlink.com.au)
- Phoning 07 3898 4919 (Monday to Friday, 8am – 5pm)

## Making a formal submission

You can make a formal submission on the MID Proposal Report (MID-1225-0981) directly to DSDIP:

- online at [planning.qld.gov.au/planning-framework/infrastructure-planning/ministerial-infrastructure-designations](https://planning.qld.gov.au/planning-framework/infrastructure-planning/ministerial-infrastructure-designations)
- by email [infrastructuredesignation@dsdilgp.qld.gov.au](mailto:infrastructuredesignation@dsdilgp.qld.gov.au)
- via mail PO BOX 15009, City East, QLD, 4002



## How is feedback considered?

All formal submissions on the MID Proposal Report will be reviewed by DSDIP and sent to Powerlink for response.

Feedback provided directly to Powerlink will be reviewed and considered by the project team. When the public consultation period has finished, we will summarise the feedback we have received and how it has been considered in a project newsletter.

## Federal Government approvals

On 14 October 2025, Powerlink referred the Theodore Wind Farm Connection Project to the Department of Climate Change, Energy, the Environment and Water (DCCEEW) for assessment under the *Environment Protection and Biodiversity Conservation Act 1999* (the EPBC Act).

The EPBC Act is Australia's national environmental legislation. It protects and manages Australia's 'nationally significant' animals, plants, habitats and places.

The referral was open for public comment from 22 October to 5 November 2025. No submissions were received.

On 4 December 2025, DCCEEW determined that the project is not a 'controlled action' and therefore does not require any further assessment under the EPBC Act. The decision notice can be viewed online at [epbcpublicportal.environment.gov.au/all-referrals/](https://epbcpublicportal.environment.gov.au/all-referrals/).

## Next steps

Powerlink will continue to work closely with directly affected landholders, Traditional Owner groups, the wider community and other stakeholders as planning activities progress.

Subject to project approval, construction is proposed to commence in late 2026.

## About Powerlink Queensland

Powerlink is a leading Australian provider of electricity transmission services, focused on delivering a safe, cost effective and reliable network for our customers.

Our network extends 1,700km from Cairns to the New South Wales border and comprises 15,559 circuit km of transmission lines and 154 substations. Our purpose is to connect Queenslanders to a world-class energy future, providing electricity to more than five million Queenslanders and 241,000 businesses.

## Further information

If you have any questions about the Theodore Wind Farm Connection Project, please contact our project team by phone on 07 3898 4919 or emailing [theodore@powerlink.com.au](mailto:theodore@powerlink.com.au).

You can also contact RWE directly for any enquiries about their wind farm project at [au.rwe.com/projects/theodore-wind-farm](https://au.rwe.com/projects/theodore-wind-farm).